

T.R. RTE.	SECTION	COUNTY	TOTAL SHEETS	SHEET NO.
151	***	CHRISTIAN	20	1

*** 93-08107-00-BR

INDEX OF SHEETS

SHEET NO.	DESCRIPTION
1	COVER SHEET
2	SUMMARY OF QUANTITIES, SCHEDULE OF QUANTITIES AND GENERAL NOTES
3	TYPICAL SECTIONS AND DETAILS
4	ROADWAY PLAN AND PROFILE
5 - 13	BRIDGE PLANS
14 - 20	CROSS SECTIONS

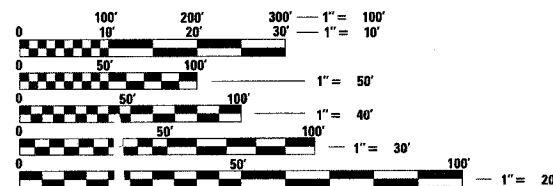
STANDARDS

000001-04	STANDARD SYMBOLS, ABBREVIATIONS AND PATTERNS
280001-03	TEMPORARY EROSION CONTROL SYSTEMS
515001-02	NAME PLATE FOR BRIDGE
635006-02	REFLECTOR AND TERMINAL MARKER PLACEMENT
702001-06	TRAFFIC CONTROL DEVICES
BLR 21-6	TYPICAL APPLICATION OF TRAFFIC CONTROL DEVICES FOR CONSTRUCTION ON RURAL LOCAL HIGHWAYS

UTILITIES

ILLINOIS CONSOLIDATED TELEPHONE LITCHFIELD, ILLINOIS 62056

SHELBY ELECTRIC COOPERATIVE SHELBYVILLE, ILLINOIS 62565



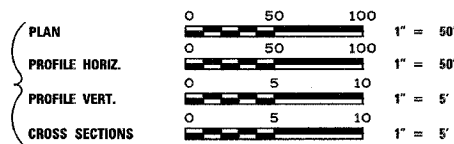
FULL SIZE PLANS HAVE BEEN PREPARED USING STANDARD ENGINEERING SCALES. REDUCED SIZED PLANS WILL NOT CONFORM TO STANDARD SCALES. IN MAKING MEASUREMENTS ON REDUCED PLANS, THE ABOVE SCALES MAY BE USED.

J.U.L.I.E. JOINT UTILITY LOCATION INFORMATION FOR EXCAVATION 1-800-892-123

CONTRACT NO. 93427

STATE OF ILLINOIS DEPARTMENT OF TRANSPORTATION DIVISION OF HIGHWAYS PLANS FOR

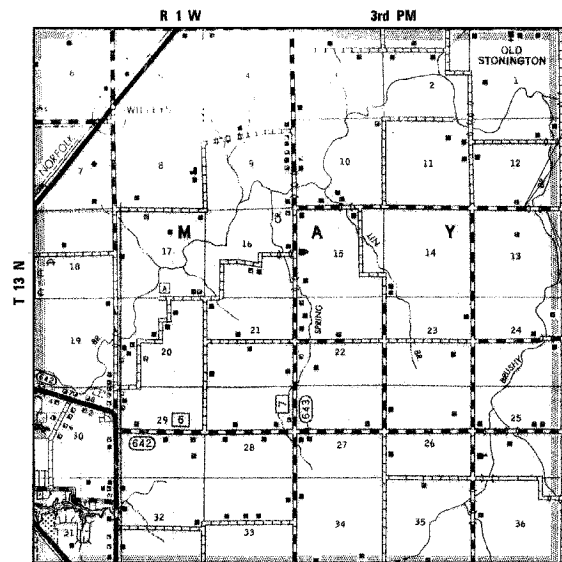
PROPOSED LOCAL AGENCY IMPROVEMENTS BRIDGE REPLACEMENT & REHABILITATION PROGRAM



TR ROUTE 151 SECTION 93-08107-00-BR CHRISTIAN COUNTY MAY ROAD DISTRICT PROJECT BROS-021(69) JOB NUMBER C-96-246-95



LOCATION OF SECTION INDICATED THIS: [Symbol]



LOCATION MAP

NET LENGTH OF PROJECT = 850.00 FEET = 0.161 MILES

DESIGN DESIGNATION

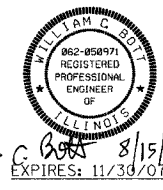
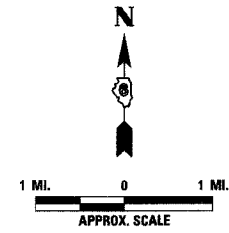
LOCAL ROAD: ADT < 150 DESIGN SPEED: 30 MPH

STA. 15+50.00 BEGIN IMPROVEMENTS SECTION 93-08107-00-BR

EXISTING STRUCTURE NO. 011-3111 SINGLE SPAN REINFORCED CONCRETE DECK WITH CONCRETE PARAPETS ON CLOSED REINFORCED CONCRETE ABUTMENTS. 63'-9" BACK TO BACK ABUTMENTS. ±21'-0" OUT TO OUT DECK.

PROPOSED STRUCTURE NO. 011-3405 TWO SPAN PPC DECK BEAM BRIDGE ON REINFORCED CONCRETE SPILL THRU ABUTMENTS AND CONCRETE ENCASED PILE BENT PIER. 107'-0" BACK TO BACK ABUTMENTS, 24'-0" OUT TO OUT DECK

STA. 24+00.00 END IMPROVEMENTS SECTION 93-08107-00-BR



William C. Bost 8/15/08 EXPIRES: 11/30/07

APPROVED	8/15/06	20	06
Chris D. Avey REGISTERED PROFESSIONAL ENGINEER			
APPROVED	8/15/06		
Gary Barlow ROAD COMMISSIONER			
PASSED	9/30/06	20	06
District Six Engineer of Local Roads & Streets			
PASSED	October 3, 2006	20	06
District Six Engineer of Construction			
Releasing For Bid Based on Limited Review	Oct 3, 2006	20	06
Christine M. Reed DEPUTY DIRECTOR OF HIGHWAYS, REGION FOUR ENGINEER			
STATE OF ILLINOIS DEPARTMENT OF TRANSPORTATION			

PRINTED BY THE AUTHORITY OF THE STATE OF ILLINOIS

PLANS PREPARED BY:

REVISIONS	NAME	DATE	COMPUTER FILE NO.
	GREENE & BRADFORD, INC.		05228COV
	PROJECT 05228		6/15/06 - MDS

SUMMARY OF QUANTITIES					
PAY CODE NUMBER	DESCRIPTION	UNIT	TOTAL	ROADWAY	BRIDGE
20100210	TREE REMOVAL (OVER 15 UNITS DIAMETER)	UNIT	24	24	
20200100	EARTH EXCAVATION	CU YD	300	300	
20300100	CHANNEL EXCAVATION	CU YD	265	265	
20400800	FURNISHED EXCAVATION	CU YD	1280	1280	
25001000	SEEDING, CLASS 2 (SPECIAL)	ACRE	0.9	0.9	
28000300	TEMPORARY DITCH CHECKS	EACH	4	4	
28000400	PERIMETER EROSION BARRIER	FOOT	1050	1050	
28000500	INLET AND PIPE PROTECTION	EACH	1	1	
28100107	STONE RIPRAP, CLASS A4	SQ YD	384		384
28200200	FILTER FABRIC	SQ YD	384		384
35101400	AGGREGATE BASE COURSE, TYPE B	TON	785	785	
40300100	BITUMINOUS MATERIALS (PRIME COAT)	GALLON	655	655	
40300300	BITUMINOUS MATERIALS (COVER AND SEAL COATS)	GALLON	1740	1740	
40300500	COVER COAT AGGREGATE	TON	42	42	
40300600	SEAL COAT AGGREGATE	TON	21	21	
50100100	REMOVAL OF EXISTING STRUCTURES	EACH	1		1
50200100	STRUCTURE EXCAVATION	CU YD	40		40
50300225	CONCRETE STRUCTURES	CU YD	44.2		44.2
50400505	PRECAST PRESTRESSED CONCRETE DECK BEAMS (27" DEPTH)	SQ FT	2534		2534
50800205	REINFORCEMENT BARS, EPOXY COATED	POUND	4840		4840
50900205	STEEL RAILING, TYPE S1	FOOT	214		214
51201005	FURNISHING METAL SHELL PILES 12"	FOOT	392		392
51202305	DRIVING PILES	FOOT	392		392
51203200	TEST PILE METAL SHELLS	EACH	2		2
51500100	NAME PLATES	EACH	1		1
54200220	PIPE CULVERTS, CLASS D, TYPE 1 15"	FOOT	36	36	
67100100	MOBILIZATION	L SUM	1	1	
70101830	TRAFFIC CONTROL AND PROTECTION, STANDARD BLR 21	L SUM	1		
78201000	TERMINAL MARKER - DIRECT APPLIED	EACH	4	4	
X5020501	UNDERWATER STRUCTURE EXCAVATION PROTECTION - LOCATION 1	EACH	1		1

*SPECIAL PROVISION

CONSTRUCTION TYPE CODE: X081-2A

EROSION CONTROL SCHEDULE			
LOCATION	28000300 TEMPORARY DITCH CHECKS (EACH)	28000400 PERIMETER EROSION BARRIER (FOOT)	28000500 INLET AND PIPE PROTECTION (EACH)
STA. 15+50 LT. TO STA. 19+50 LT.		410	
STA. 15+50 RT. TO STA. 19+50 RT.		415	
STA. 20+50 LT. TO STA. 21+04 LT.		60	
STA. 20+50 RT. TO STA. 22+00 RT.		165	
STA. 21+34, 19' LT.			1
STA. 22+00, LT. AND RT.	2		
STA. 23+00, LT. AND RT.	2		
TOTALS	4	1050	1

GENERAL NOTES

- WHEN SECTION OR SUB-SECTION MONUMENTS ARE ENCOUNTERED THE ENGINEER SHALL BE NOTIFIED BEFORE SUCH MONUMENTS ARE REMOVED. THE CONTRACTOR SHALL PROTECT AND CAREFULLY PRESERVE ALL PROPERTY MARKS AND MONUMENT UNTIL THE OWNER OR AN AUTHORIZED SURVEYOR OR AGENT HAS WITNESSED OR OTHERWISE REFERENCED THEIR LOCATION.
- SEE SPECIAL PROVISIONS FOR SEEDING RATES.
- ALL PLAN ELEVATIONS REPRESENT ASSUMED DATUM.
- THE LOCATIONS OF THOSE BURIED AND ABOVE GROUND UTILITIES SHOWN, ARE APPROXIMATE, ARE SHOWN FOR CONTRACTOR INFORMATIONAL USE ONLY, AND ARE NOT TO BE REFERENCED FOR CONSTRUCTION PURPOSES. THE IMPLIED PRESENCE OR ABSENCE OF UTILITIES IS NOT TO BE CONSTRUED BY THE OWNER, ENGINEER, CONTRACTOR, OR SUBCONTRACTOR TO BE AN ACCURATE AND COMPLETE REPRESENTATION OF UTILITIES THAT MAY OR MAY NOT EXIST ON THE CONSTRUCTION SITE. BURIED AND ABOVE GROUND UTILITY LOCATION, IDENTIFICATION, AND MARKING ARE THE SOLE RESPONSIBILITY OF THE CONTRACTOR REROUTING, DISCONNECTION, PROTECTION, ETC. OF ANY UTILITIES MUST BE COORDINATED BETWEEN THE CONTRACTOR, UTILITY COMPANY, AND OWNER. SITE SAFETY, INCLUDING THE AVOIDANCE OF HAZARDS ASSOCIATED WITH BURIED AND ABOVE GROUND UTILITIES, REMAINS THE SOLE RESPONSIBILITY OF THE CONTRACTOR. THE CONTRACTOR SHALL BE RESPONSIBLE FOR PROTECTING UTILITY PROPERTY FROM CONSTRUCTION OPERATIONS AS OUTLINED IN ARTICLE 107.31 OF THE STANDARD SPECIFICATIONS. J.U.L.I.E. MEMBERS ACTIVE IN THE VICINITY OF THE PROJECT ARE LISTED ON THE COVER SHEET.
- APPLICATION RATES:
 AGGREGATE BASE COURSE: 2.05 TONS/CU YD
 COVER & SEAL COAT AGGREGATE: 25 LBS/SQ YD
 AGGREGATE (PRIME COAT): 4 LBS/SQ YD
 BITUMINOUS MATL'S (PRIME COAT): 0.375 GAL/SQ YD
 BITUMINOUS MATL'S (C & S COATS): 0.35 GAL/SQ YD
 STONE RIPRAP, CLASS A4: 1.5 TONS/CU YD

PLOT DATE = 6/14/2006
 FILE NAME = D:\PROJECTS\DRAWINGS\05228SUM.dgn
 PLOT SCALE = 3/8"=1'-0"
 REFERENCE = .REF.
 OPERATOR = gmgj

REVISIONS	
NAME	DATE

ILLINOIS DEPARTMENT OF TRANSPORTATION
**SUMMARY OF QUANTITIES,
 SCHEDULE OF QUANTITIES &
 GENERAL NOTES**
 TR 151 OVER BRUSHY BRANCH CREEK
 SECTION 93-08107-00-BR
 CHRISTIAN COUNTY

SCALE: VERT. _____
 HORIZ. _____
 DATE _____

DRAWN BY: BISHOP
 CHECKED BY: SUTHEARD

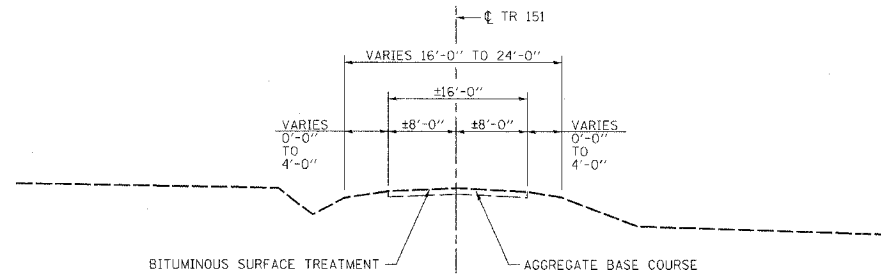
GREENE & BRADFORD, INC.
 OF SPRINGFIELD
 CONSULTING ENGINEERS
 PROFESSIONAL ENGINEERS
 PROFESSIONAL SURVEYORS
 PROFESSIONAL LAND SURVEYORS
 PROFESSIONAL GEOTECHNICAL ENGINEERS
 PROFESSIONAL CIVIL ENGINEERS
 PROFESSIONAL ELECTRICAL ENGINEERS
 PROFESSIONAL MECHANICAL ENGINEERS
 PROFESSIONAL CHEMICAL ENGINEERS
 PROFESSIONAL INDUSTRIAL ENGINEERS
 PROFESSIONAL AERONAUTICAL ENGINEERS
 PROFESSIONAL NUCLEAR ENGINEERS
 PROFESSIONAL METALLURGICAL ENGINEERS
 PROFESSIONAL MARINE ENGINEERS
 PROFESSIONAL AGRICULTURAL ENGINEERS
 PROFESSIONAL FORESTRY ENGINEERS
 PROFESSIONAL MINING ENGINEERS
 PROFESSIONAL PETROLEUM ENGINEERS
 PROFESSIONAL POLYMER ENGINEERS
 PROFESSIONAL RADIATION ENGINEERS
 PROFESSIONAL TRANSPORTATION ENGINEERS
 PROFESSIONAL WIND ENGINEERS
 PROFESSIONAL AEROSPACE ENGINEERS
 PROFESSIONAL ACOUSTICAL ENGINEERS
 PROFESSIONAL ENVIRONMENTAL ENGINEERS
 PROFESSIONAL FOOD ENGINEERS
 PROFESSIONAL FIBER ENGINEERS
 PROFESSIONAL TEXTILE ENGINEERS
 PROFESSIONAL APPLIED POLYMER ENGINEERS
 PROFESSIONAL CHEMICAL ENGINEERS
 PROFESSIONAL INDUSTRIAL ENGINEERS
 PROFESSIONAL METALLURGICAL ENGINEERS
 PROFESSIONAL NUCLEAR ENGINEERS
 PROFESSIONAL PETROLEUM ENGINEERS
 PROFESSIONAL POLYMER ENGINEERS
 PROFESSIONAL RADIATION ENGINEERS
 PROFESSIONAL TRANSPORTATION ENGINEERS
 PROFESSIONAL WIND ENGINEERS
 PROFESSIONAL AEROSPACE ENGINEERS
 PROFESSIONAL ACOUSTICAL ENGINEERS
 PROFESSIONAL ENVIRONMENTAL ENGINEERS
 PROFESSIONAL FOOD ENGINEERS
 PROFESSIONAL FIBER ENGINEERS
 PROFESSIONAL TEXTILE ENGINEERS
 PROFESSIONAL APPLIED POLYMER ENGINEERS

COMPUTER FILE NO.
 05228SUM

PROJECT 05228
 6/15/06 - MDS

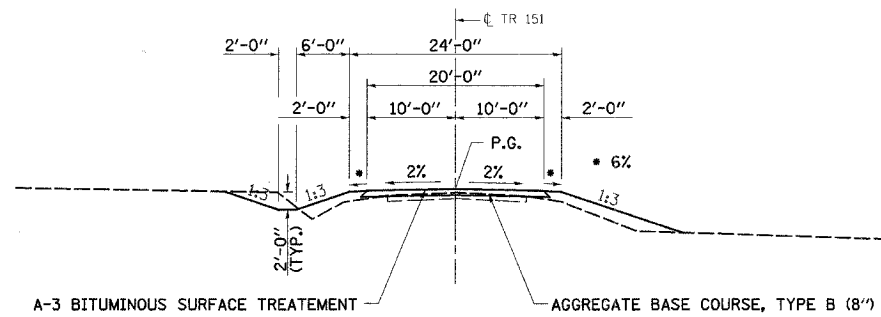
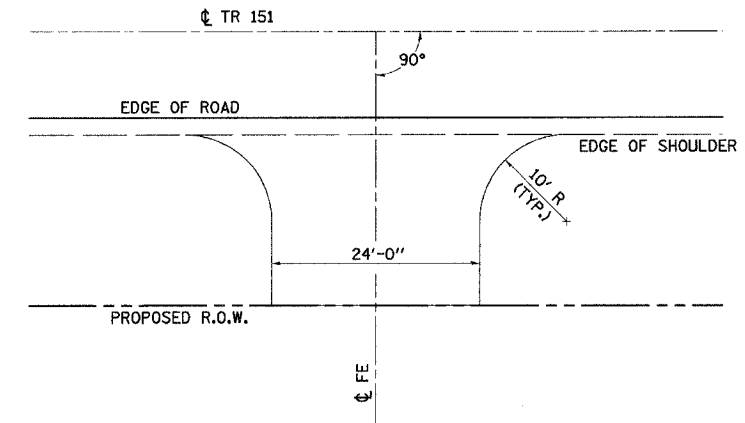
TR. RTE.	SECTION	COUNTY	TOTAL SHEETS	SHEET NO.
151	93-08107-00-BR	CHRISTIAN	20	3
STA.		TO STA.		
FED. ROAD DIST. NO.	ILLINOIS	FED. AID PROJECT		

• BR05-021(35)



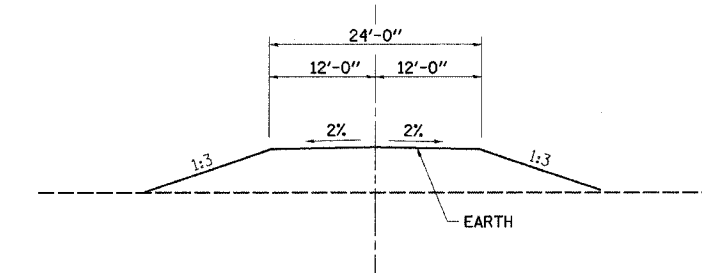
EXISTING TYPICAL ROADWAY SECTION

STA. 15+50 TO STA. 24+00



PROPOSED TYPICAL ROADWAY SECTION

STA. 16+50 TO STA. 23+00
(BRIDGE OMISSION : STA. 19+46.50 TO STA. 20+53.50)



TYPICAL FIELD ENTRANCE DETAIL

PLOT DATE = 6/14/06
 FILE NAME = S:\05228\DRAWINGS\05228TYP.dgn
 PLOT SCALE = 3/8"=1'-0"
 REFERENCE = .REF.
 OPERATOR = gmgj

REVISIONS	
NAME	DATE

ILLINOIS DEPARTMENT OF TRANSPORTATION
TYPICAL SECTIONS & DETAILS
 TR 151 OVER BRUSHY BRANCH CREEK
 SECTION 93-08107-00-BR
 CHRISTIAN COUNTY

SCALE: VERT. _____
 HORIZ. _____

DATE _____ DRAWN BY: BISHOP
 CHECKED BY: SUTHEARD

COMPUTER FILE NO. 05228TYP
 PROJECT 05228
 6/15/06 - MDS

GREENE & BRADFORD, INC.
 OF SPRINGFIELD
 CIVIL ENGINEERS
 PROFESSIONAL ENGINEERING CORPORATION
 400 W. BROADWAY, SUITE 1000, SPRINGFIELD, ILLINOIS 62762-4000
 (618) 795-8844, (217) 553-1227, FAX (618) 795-8844

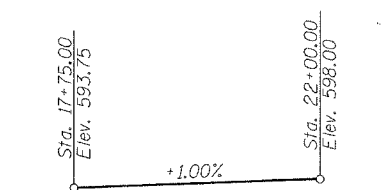
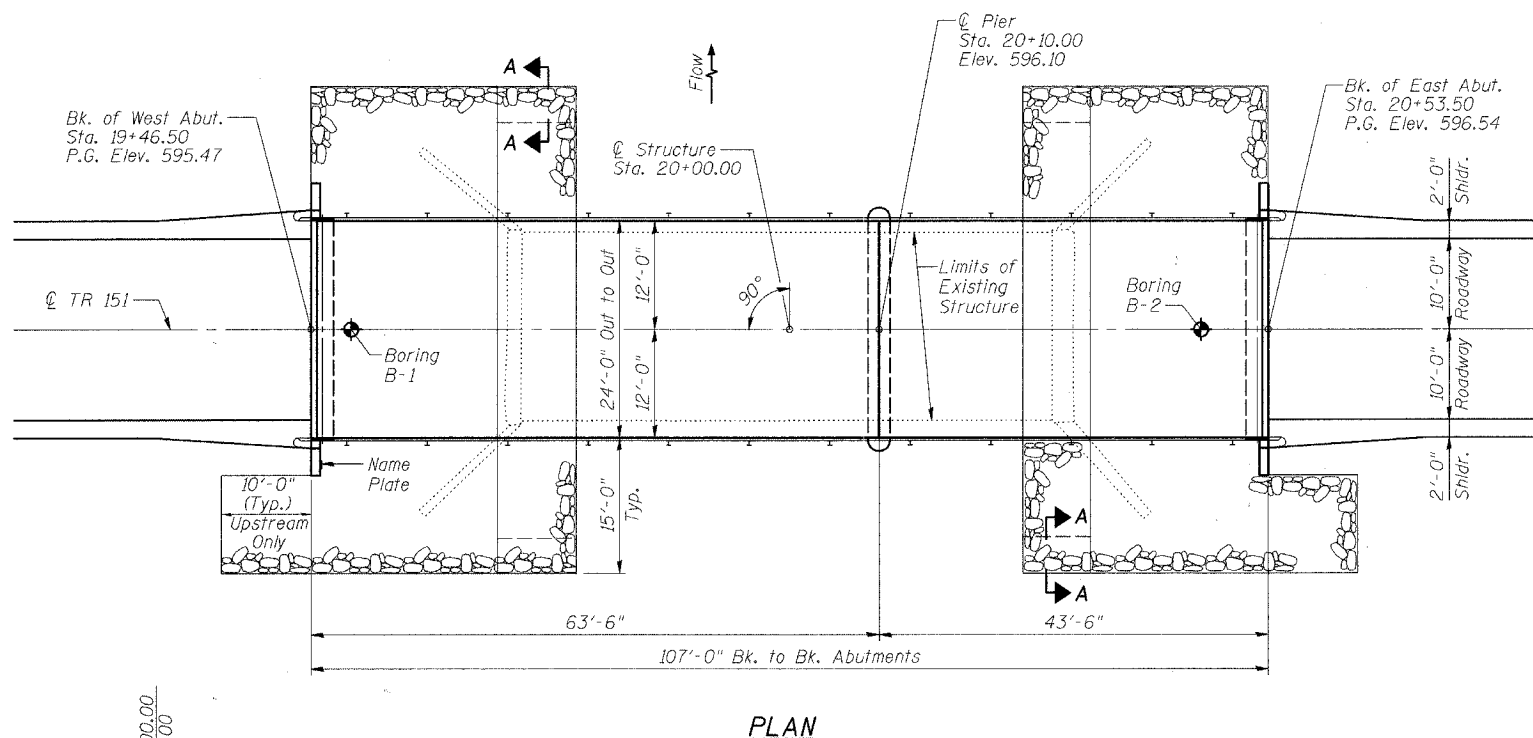
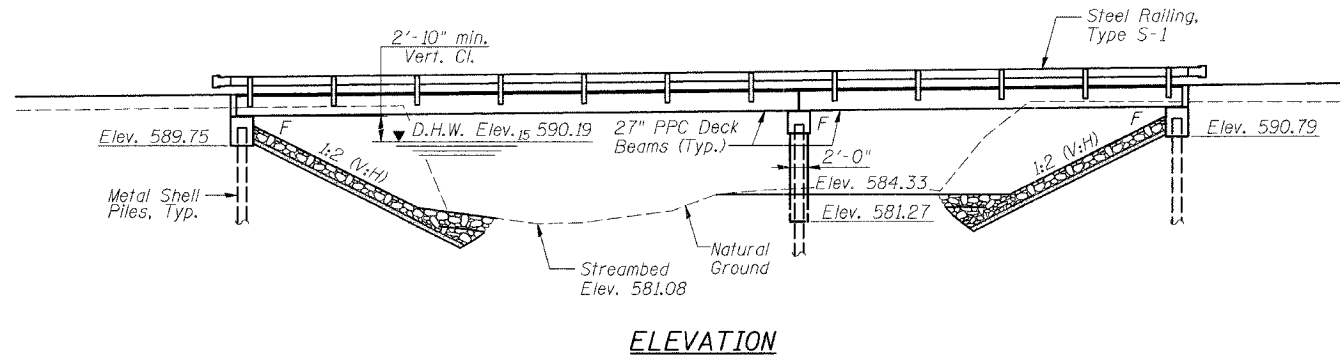
STATE OF ILLINOIS
DEPARTMENT OF TRANSPORTATION

ROUTE NO.	SECTION	COUNTY	SHEET NO.	SHEET NO.
TR 151	*	CHRISTIAN	20	5
FED. ROAD DIST. NO. ILLINOIS FED. AID PROJECT-				
* 93-08107-00-BR				

Bench Mark:

Existing Structure: Structure Number 011-3111. Single span reinforced concrete thru girder on closed, reinforced concrete abutments. 63'-9" back to back abutments. ±21'-0" out to out deck. Existing bridge to be removed and replaced with a two span, PPC deck beam bridge. Road to be closed during construction.

No Salvage.



WATERWAY INFORMATION

Drainage Area = 30.72 Sq. Mi.		Exist. Low Grade Elev. 592.73 @ Sta. 18+00.00		Prop. Low Grade Elev. 593.45 @ Sta. 17+15.12		
Flood Yr.	Q C.F.S.	Opening	Sq. Ft.	Nat. H.W.E.	Head - Ft.	Headwater El.
		Exist.	Prop.	Exist.	Prop.	Exist.
Design	10	1860	403.9	488.3	590.00	0.25
Base	15	2045	417.5	505.4	590.19	0.29
Overtopping	100	3265	500.9	612.8	591.32	0.62
Max. Calc.	500	4265	560	694	592.12	0.97

NAME PLATE
See Std. 515001

BRUSHY BRANCH CREEK
BUILT 20... BY
MAY ROAD DISTRICT
CHRISTIAN COUNTY
SECTION 93-08107-00-BR
STA. 20+00.00
STR. NO. 011-3405 LOADING HS20

LOADING HS20-44
Allow 50#/sq. ft. for future wearing surface

DESIGN SPECIFICATIONS
2002 AASHTO

DESIGN STRESSES

FIELD UNITS
 $f'_c = 3,500$ psi
 $f_y = 60,000$ psi (reinforcement)

PRECAST PRESTRESSED UNITS
 $f'_c = 5,000$ psi
 $f_{ci} = 4,000$ psi
 $f'_s = 270,000$ psi ($\frac{1}{2}$ " low lax strands)
 $f_{si} = 202,000$ psi ($\frac{1}{2}$ " low lax strands)

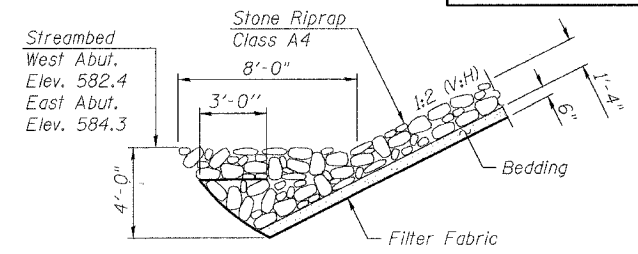
SEISMIC DATA
Seismic Performance Category (SPC) = A
Bedrock Acceleration Coefficient (A) = 0.06
Site Coefficient (S) = 1.5

GENERAL NOTES

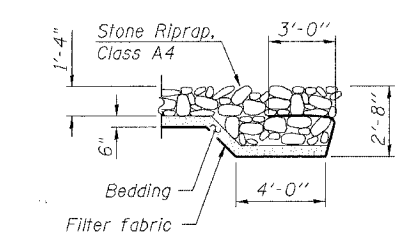
Reinforcement bars shall conform to the requirements of AASHTO M 31 or M 322 Grade 60.
Layout of slope protection system may be varied in the field to suit ground conditions as directed by the Engineer.
The Contractor shall drive one test pile in a permanent location at West Abutment and at Pier as directed by the Engineer before ordering the remainder of piles.
All joints shall be bonded.

TOTAL BILL OF MATERIAL

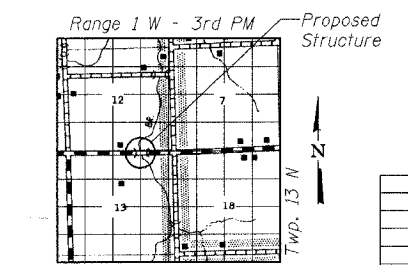
ITEM	UNIT	SUPER	SUB	TOTAL
Stone Riprap, Class A4	Sq. Yd.		384	384
Filter Fabric	Sq. Yd.		384	384
Removal of Existing Structures	Each			1
Structure Excavation	Cu. Yd.		40	40
Concrete Structures	Cu. Yd.		44.2	44.2
Precast Prestressed Concrete Deck Beams (27" Depth)	Sq. Ft.	2534		2534
Reinforcement Bars, Epoxy Coated	Pound		4840	4840
Steel Railing, Type S-1	Foot	214		214
Furnishing Metal SHELL PILES 12"	Foot		392	392
Driving Piles	Foot		392	392
Test Pile Metal Shells	Each		2	2
Name Plates	Each	1		1
Underwater Structure Excavation Protection Location 1 (Pier)	Each		1	1



SECTION A-A



LOCATION SKETCH



Expires: 11/30/06

I certify that to the best of my knowledge, information and belief, this bridge design is structurally adequate for the design loading shown on the plans. The design is an economical one for the style of structure and complies with requirements of the current A.A.S.H.T.O. Standard Specifications for Highway Bridges.

Michael J. Trello
Signed
8/15/06
Dated

**ILLINOIS DEPARTMENT OF TRANSPORTATION
GENERAL PLAN AND ELEVATION**

TR 151 OVER BRUSHY BRANCH CREEK
SECTION 93-08107-00-BR
CHRISTIAN COUNTY
STATION 20+00.00
S.N. 011-3405

REVISIONS	
NAME	DATE

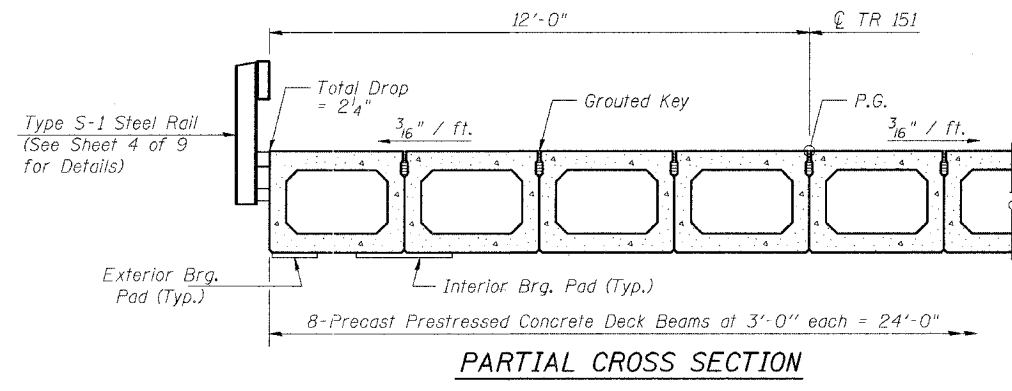
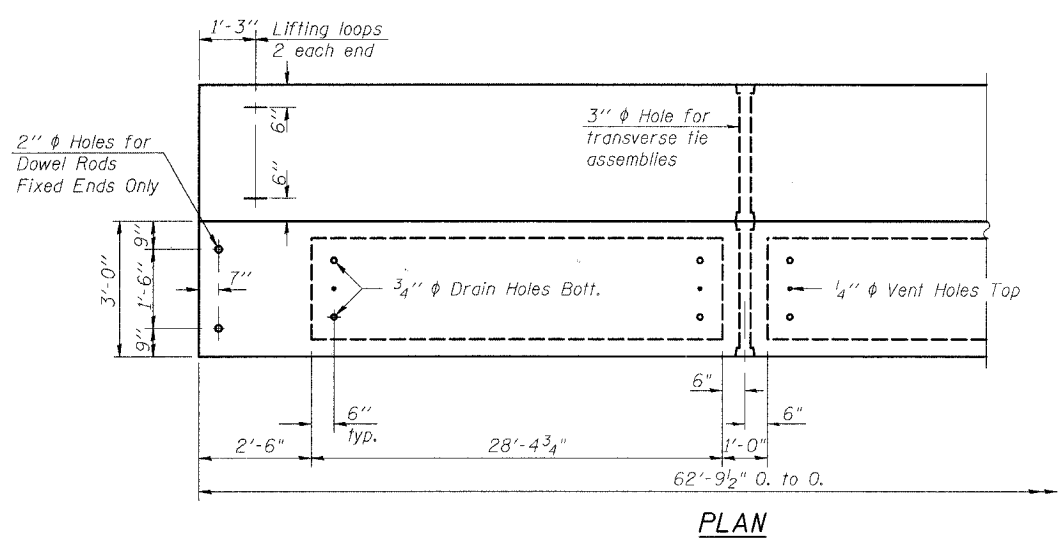
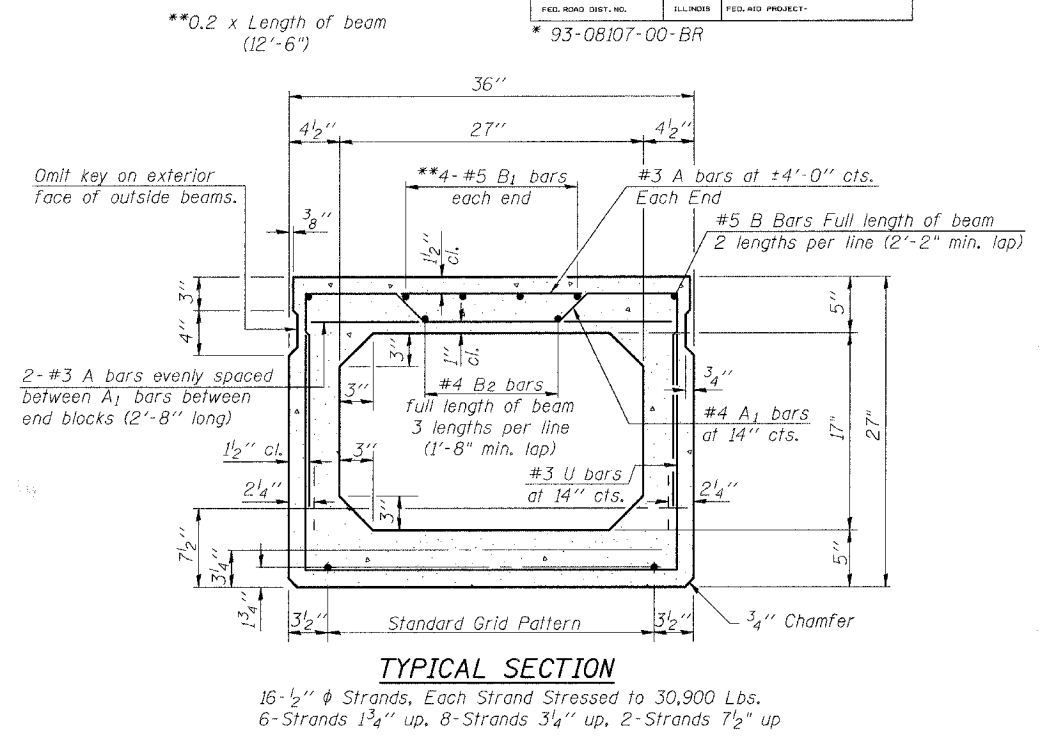
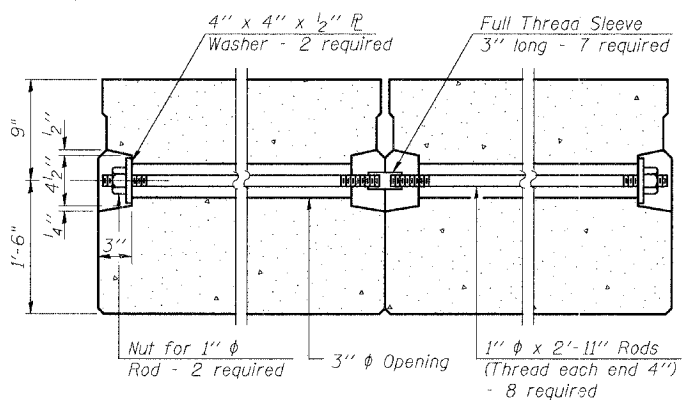
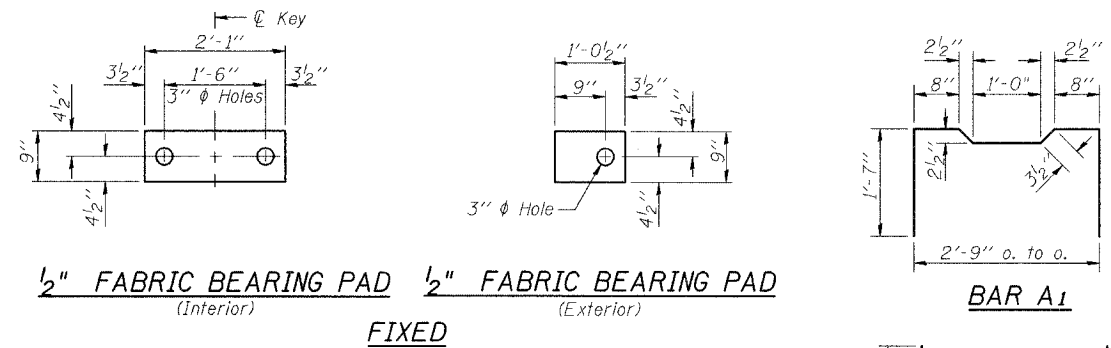
SCALE: VERT. DATE: 4/8/06
DRAWN BY: LANDREY
DESIGNED BY: MATHUR
CHECKED BY: TRELLO
COMPUTER FILE NO. SN013405:01
PROJECT 05228
6/27/06-MML

FILE NAME = J:\05228\DRAWINGS\SN013405\SN013405.dgn
PLOT SCALE = 0.0833 / 1
PLOT DATE = 8/14/2006
CJOB NAME = 200536.PM
OPERATOR = mctreil

ROUTE NO.	SECTION	COUNTY	TOTAL SHEETS	SHEET NO.
TR 151	*	CHRISTIAN	20	6
FED. ROAD DIST. NO.	ILLINOIS	FED. AID PROJECT-		
		* 93-08107-00-BR		

SHEET NO. 2
9 SHEETS

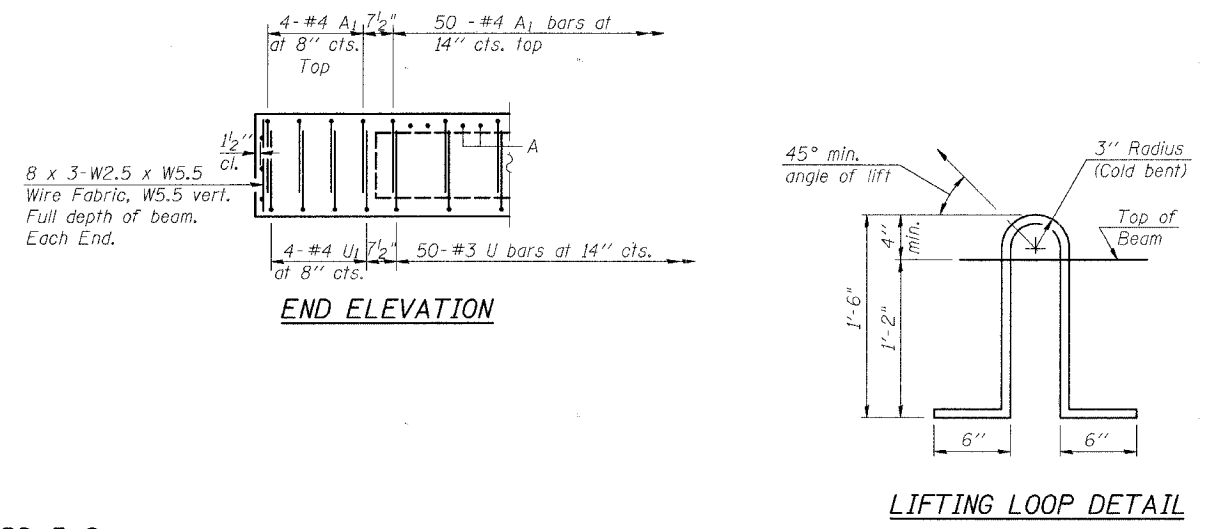
STATE OF ILLINOIS
DEPARTMENT OF TRANSPORTATION



BILL OF MATERIAL

Bar	No.	Size	Length	Shape	
A	106	#3	2'-8"	—	
A ₁	58	#4	6'-1"	⌒	
B	4	#5	32'-5"	—	
B ₁	8	#5	12'-6"	—	
B ₂	6	#4	22'-0"	—	
U	50	#3	6'-3"	⌒	
U ₁	8	#4	6'-3"	⌒	
Precast Prestressed Conc. Deck Bms. (27" Depth)				Sq. Ft.	1507

Bar quantities are for 1 beam and are for information only.



NOTES

Prestressing steel shall be uncoated high strength, low relaxation 7-wire strand, Grade 270. The nominal diameter shall be 1/2" and the nominal cross-sectional area shall be 0.153 sq. in. Lifting loops shall be 2 - 1/2" ϕ -270 ksi strands, as shown. The 1" ϕ rods in the transverse tie assembly shall be tightened to a snug fit and the threads set. Pockets that receive transverse tie bar on outside shall be filled with grout after transverse tie assembly is in place. Non prestressing steel shall conform to AASHTO M-31, or M-322 Grade 60. The bearing seat surfaces shall be adjusted by shimming to assure firm and even bearing. Two 1/2" fabric adjusting shims of the dimensions of the Exterior Bearing Pad shall be provided for each bearing. Keyway surfaces shall be cleaned to remove form oil or other bond breaking material prior to shipment of the beams. Cleaning shall be done by sandblasting the keyway areas between top of the beam and the bottom edge of the key. Corrosion Inhibitor, as covered in the Special Provisions, shall be used in the concrete for precast prestressed concrete deck beams. Required Release Strength, f'ci, shall be 4,000 p.s.i. Rail Post Anchor Device shall be cast into exterior face of outside beams as shown on Bridge sheet 4 of 9.

REVISIONS	
NAME	DATE

ILLINOIS DEPARTMENT OF TRANSPORTATION
SPAN 1
SUPERSTRUCTURE DETAILS
TR 151 OVER BRUSHY BRANCH CREEK
SECTION 93-08107-00-BR
CHRISTIAN COUNTY
STATION 20+00.00
S.N. 011-3405

SCALE: VERT. _____
HORIZ. _____
DATE: 4/8/06

DRAWN BY: LANDREY
DESIGNED BY: MATHUR
CHECKED BY: TRELLO

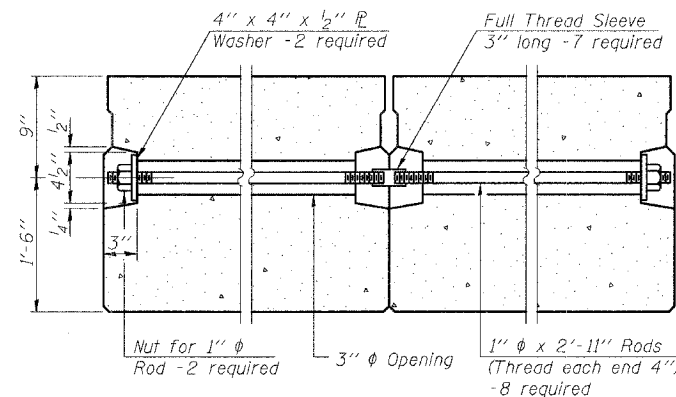
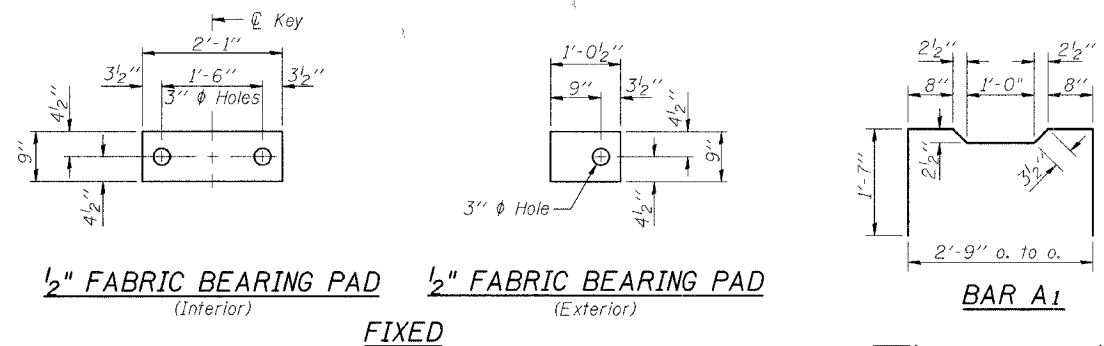
GREENE & BRADFORD, INC.
OF SPRINGFIELD
REGISTERED PROFESSIONAL ENGINEERS
ILLINOIS LICENSE NO. 021-000000
PROFESSIONAL DESIGNER LICENSE NO. 021-000000
OPERATOR LICENSE NO. 021-000000

COMPUTER FILE NO.
SN0113405:02
PROJECT 05228
6/27/06-MML

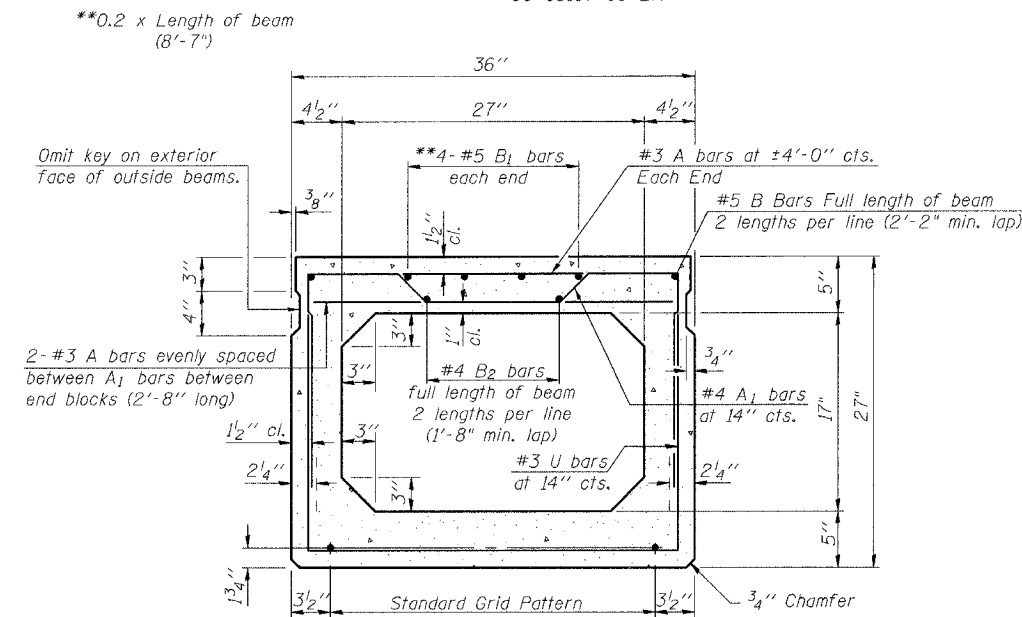
FILE NAME = J:\05228 DRAWINGS\SN0113405\SN0113405.dgn
PLOT DATE = 08/03/06
PLOT TIME = 2:03:09 PM
OPERATOR = mitchell

ROUTE NO.	SECTION	COUNTY	TOTAL SHEETS	SHEET NO.
TR 151	*	CHRISTIAN	20	7
FED. ROAD DIST. NO.	ILLINOIS	FED. AID PROJECT		
		* 93-08107-00-BR		

STATE OF ILLINOIS
DEPARTMENT OF TRANSPORTATION



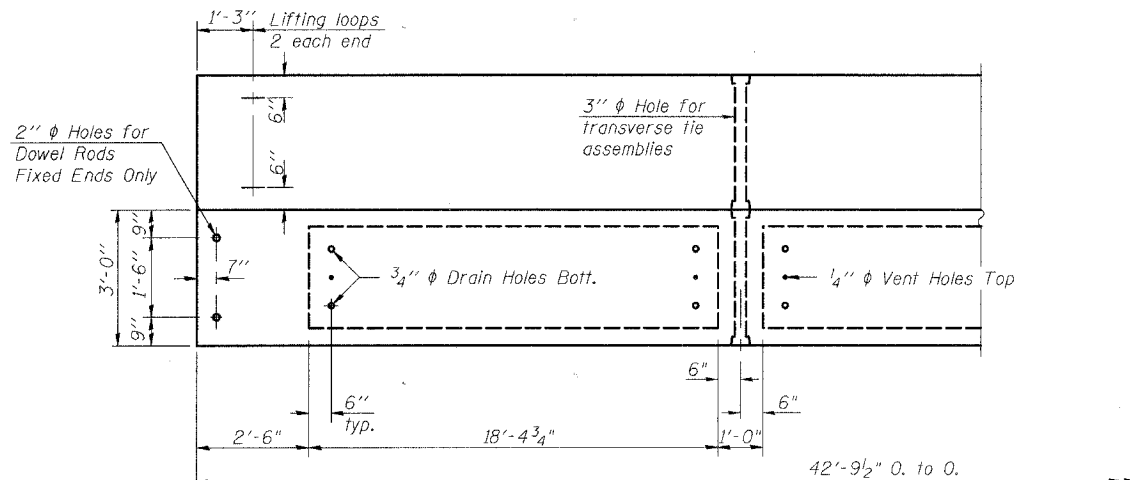
TYPICAL TRANSVERSE TIE ASSEMBLY



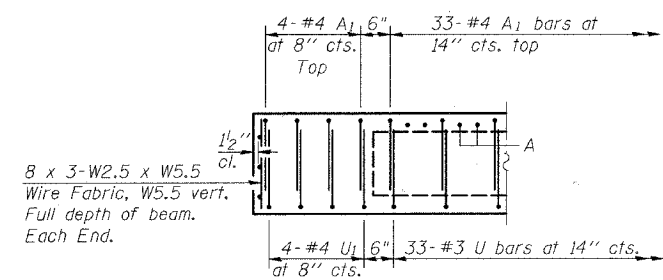
TYPICAL SECTION

8- 1/2" ϕ Strands, Each Strand Stressed to 30,900 Lbs.
8-Strands 1 3/4" up

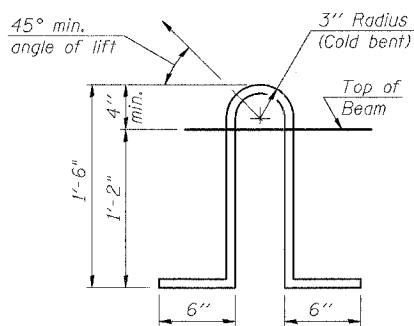
Note:
Place strands symmetrically about ϕ of beam.



PLAN



END ELEVATION



LIFTING LOOP DETAIL

NOTES

Prestressing steel shall be uncoated high strength, low relaxation 7-wire strand, Grade 270. The nominal diameter shall be 1/2" and the nominal cross-sectional area shall be 0.153 sq. in. Lifting loops shall be 2 - 1/2" ϕ -270 ksi strands, as shown.
The 1" ϕ rods in the transverse tie assembly shall be tightened to a snug fit and the threads set. Pockets that receive transverse tie bar on outside shall be filled with grout after transverse tie assembly is in place.
Non prestressing steel shall conform to AASHTO M-31, or M-322 Grade 60.
The bearing seat surfaces shall be adjusted by shimming to assure firm and even bearing. Two 1/8" fabric adjusting shims of the dimensions of the Exterior Bearing Pad shall be provided for each bearing.
Keyway surfaces shall be cleaned to remove form oil or other bond breaking material prior to shipment of the beams. Cleaning shall be done by sandblasting the keyway areas between top of the beam and the bottom edge of the key.
Corrosion Inhibitor, as covered in the Special Provisions, shall be used in the concrete for precast prestressed concrete deck beams.
Required Release Strength, f'ci, shall be 4,000 p.s.i.
Rail Post Anchor Device shall be cast into exterior face of outside beams as shown on Bridge sheet 4 of 9.

BILL OF MATERIAL

Bar	No.	Size	Length	Shape
A	70	#3	2'-8"	—
A ₁	41	#4	6'-1"	⌒
B	4	#5	22'-5"	—
B ₁	8	#5	8'-7"	—
B ₂	4	#4	22'-5"	—
U	33	#3	6'-3"	⌒
U ₁	8	#4	6'-3"	⌒
Precast Prestressed Conc. Deck Bms. (27" Depth)				Sq. Ft. 1027

Bar quantities are for 1 beam and are for information only.

REVISIONS	
NAME	DATE

ILLINOIS DEPARTMENT OF TRANSPORTATION
SPAN 2
SUPERSTRUCTURE DETAILS
TR 151 OVER BRUSHY BRANCH CREEK
SECTION 93-08107-00-BR
CHRISTIAN COUNTY
STATION 20+00.00
S.N. 011-3405

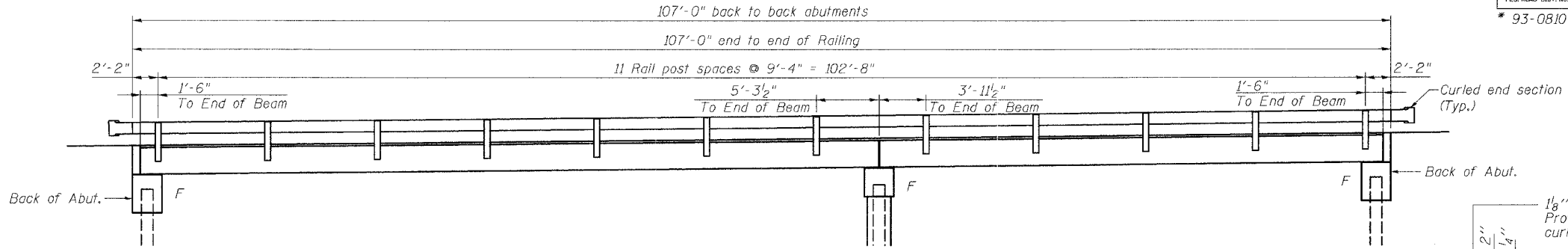
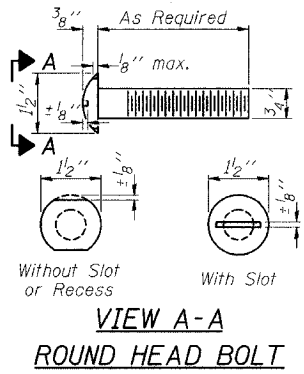
SCALE: VERT. _____
HORIZ. _____
DATE: 4/8/06
DRAWN BY: LANDREY
DESIGNED BY: MATHUR
CHECKED BY: TRELLO
COMPUTER FILE NO. SN0113405:03
PROJECT 05228
6/27/06-MML



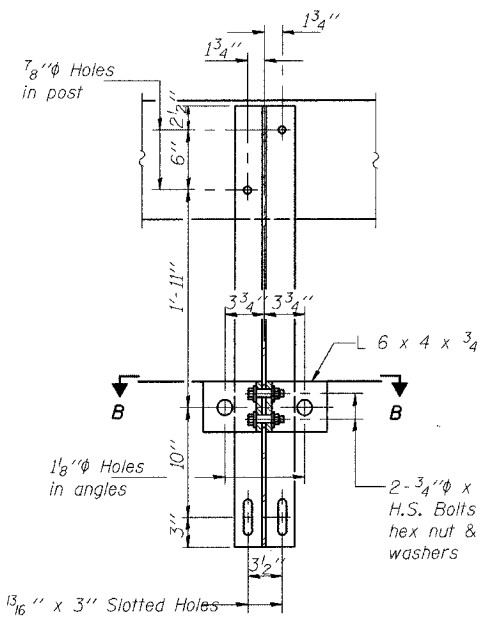
FILE NAME = J:\05228\DRAWINGS\SN0113405\SN0113405.dgn
PLOT SCALE = 0.0833
PLOT DATE = 8/14/2006
OPERATOR = 2:03:54 PM
OPERATOR = mitchell

STATE OF ILLINOIS
DEPARTMENT OF TRANSPORTATION

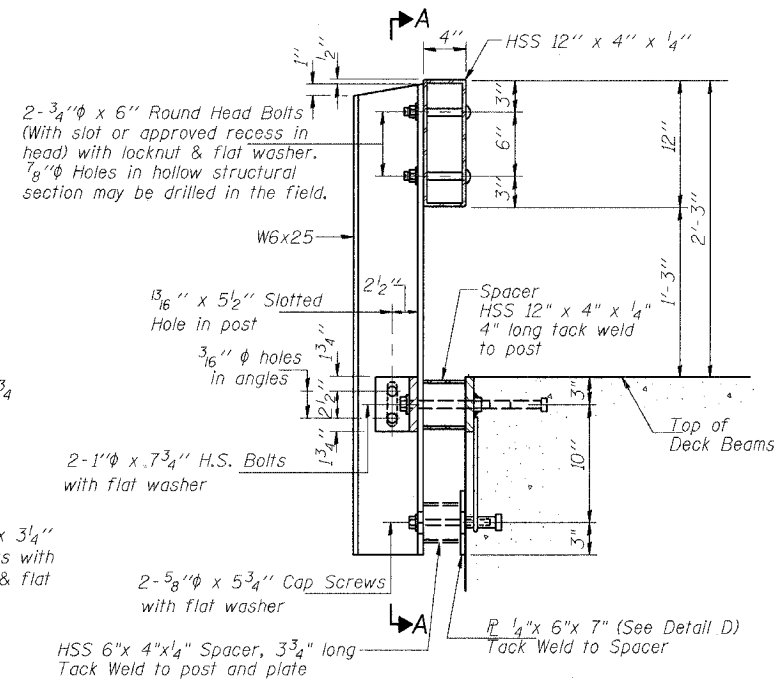
ROUTE NO.	SECTION	COUNTY	DATE	SHEET	SHEET NO. 4 9 SHEETS
TR 151	*	CHRISTIAN	20	8	
FED. ROAD DIST. NO.	ILL. DIST.	FED. AID PROJECT			
* 93-08107-00-BR					



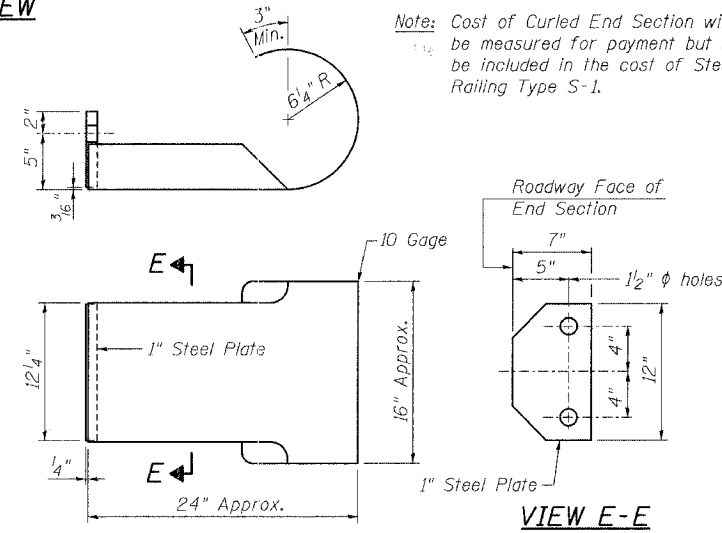
ELEVATION VIEW



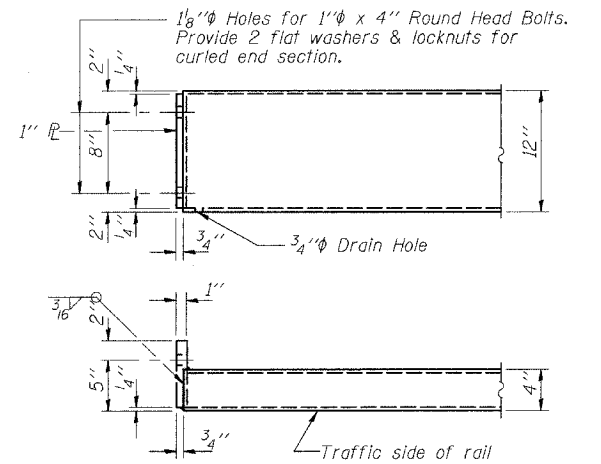
SECTION A-A



SECTION AT RAIL POST



CURLED END SECTION DETAILS



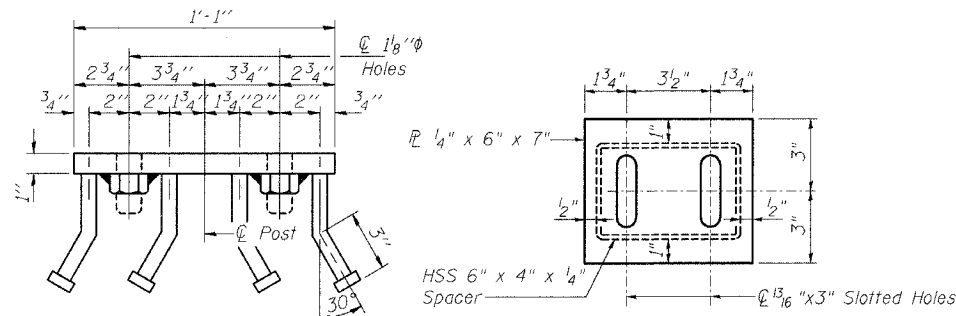
END OF RAIL DETAILS

NOTES

Hollow structural sections shall conform to the requirements of ASTM designation A 500 Grade B Structural Steel Tubing and shall meet the longitudinal CVN requirements of 15 ft-lbs at 0° F. All other steel shapes and plates shall conform to the requirements of AASHTO M 270 Grade 36 except posts and angles shall conform to AASHTO M 270, Grade 50. Bolts, cap screws, and nuts shall conform to the requirements of ASTM designation A 307 except for high strength bolts, nuts and washers noted which shall conform to AASHTO M 164. All bolts, nuts, cap screws, washers and lock washers shall be galvanized according to AASHTO M 232. All posts, railing, rail splices, anchor devices, end sections and angles shall be galvanized after shop fabrication according to AASHTO M 111 and ASTM A 385. Galvanized rail shall not be painted. Railing shall be according to Section 509 of the Standard Specifications, except as noted, and will be paid for at the contract unit price per foot for STEEL RAILING, TYPE S-1. All field drilled holes shall be coated with an approved zinc rich paint before erection. The lower portion of the post flange in contact with concrete shall receive two coats of asphalt paint conforming to Section 1060.07 Type II or place 1/8 inch fabric bearing pad between the post and concrete. The 3/4 inch high strength bolts used to connect the 6 x 4 x 3/4 angles to the post shall be tightened according to Article 505.04(f)(2) of the Standard Specifications. The 1 inch high strength bolts connecting the angles to the concrete shall be tightened to a snug fit and given an additional 1/8 turn. The 5/8 inch cap screws in bottom of posts shall be tightened to a snug fit only.

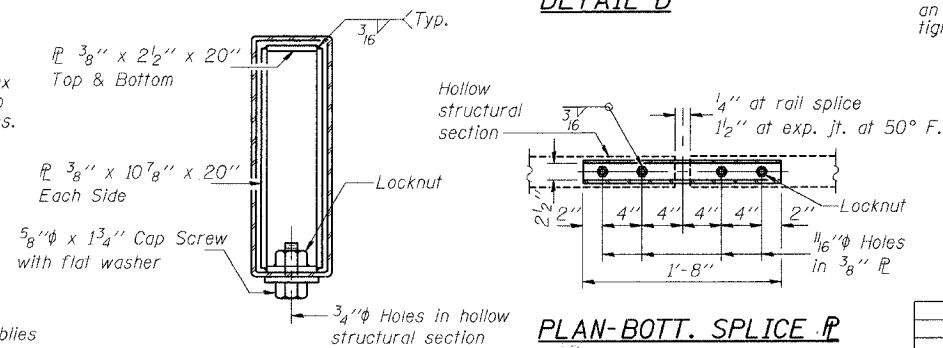
BILL OF MATERIAL

Item	Unit	Quantity
Steel Railing Type S-1	Foot	214



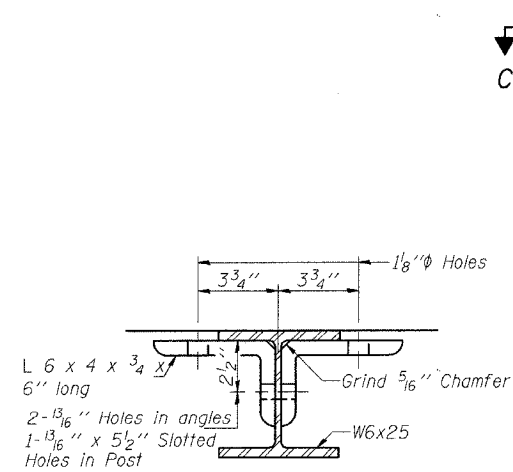
VIEW C-C

DETAIL D

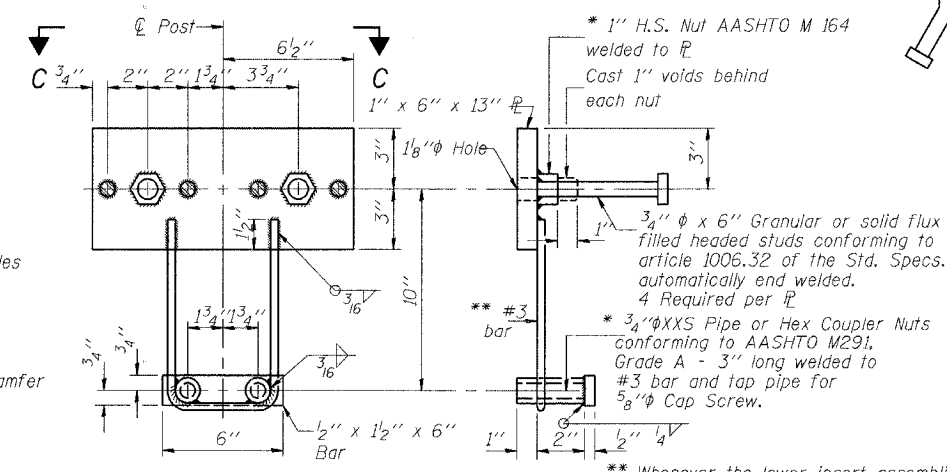


SECTIONS AT RAIL SPLICE

PLAN-BOTT. SPLICE TYPICAL



SECTION B-B



ANCHOR DEVICE

* Threaded areas shall be plugged or blocked off during casting of beam.

** Whenever the lower insert assemblies interfere with strand locations, the #3 bars shall be cut and adjusted in order to allow raising, or lowering of the lower inserts. Maximum adjustment not to exceed 1/2 inch.

REVISIONS	
NAME	DATE

ILLINOIS DEPARTMENT OF TRANSPORTATION
TYPE S-1 STEEL RAILING
TR 151 OVER BRUSHY BRANCH CREEK
SECTION 93-08107-00-BR
CHRISTIAN COUNTY
STATION 20+00.00
S.N. 011-3405

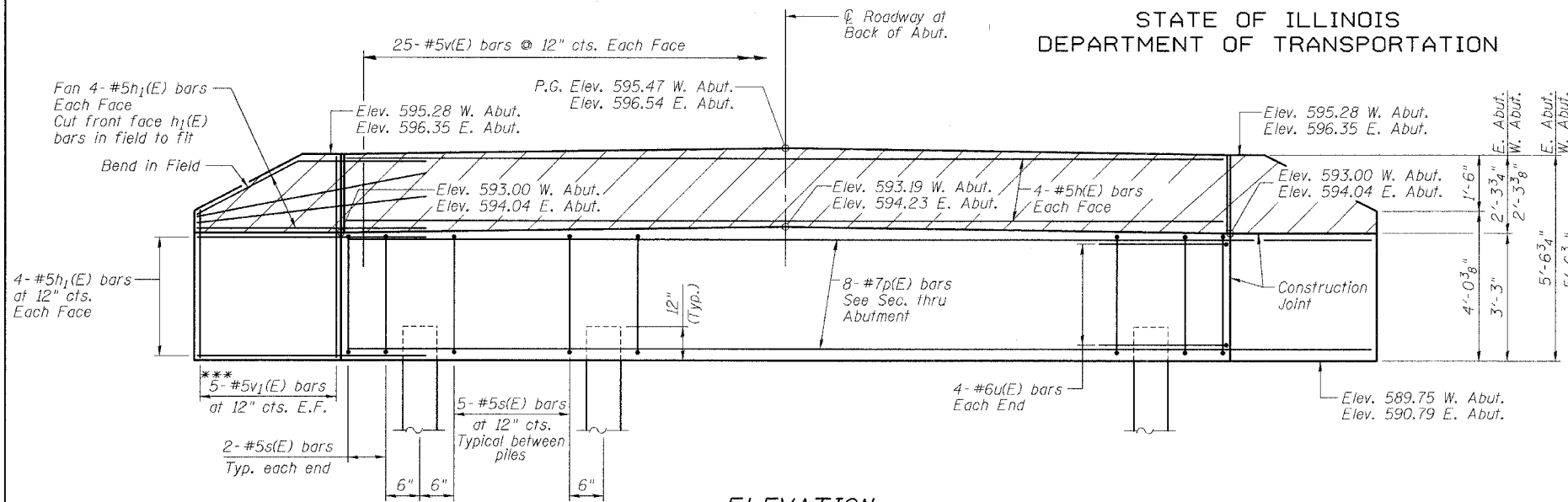
SCALE: VERT. 1"=4'
HORIZ. 1"=20'
DATE: 4/8/06

DRAWN BY: LANDREY
DESIGNED BY: MATHUR
CHECKED BY: TRELLO

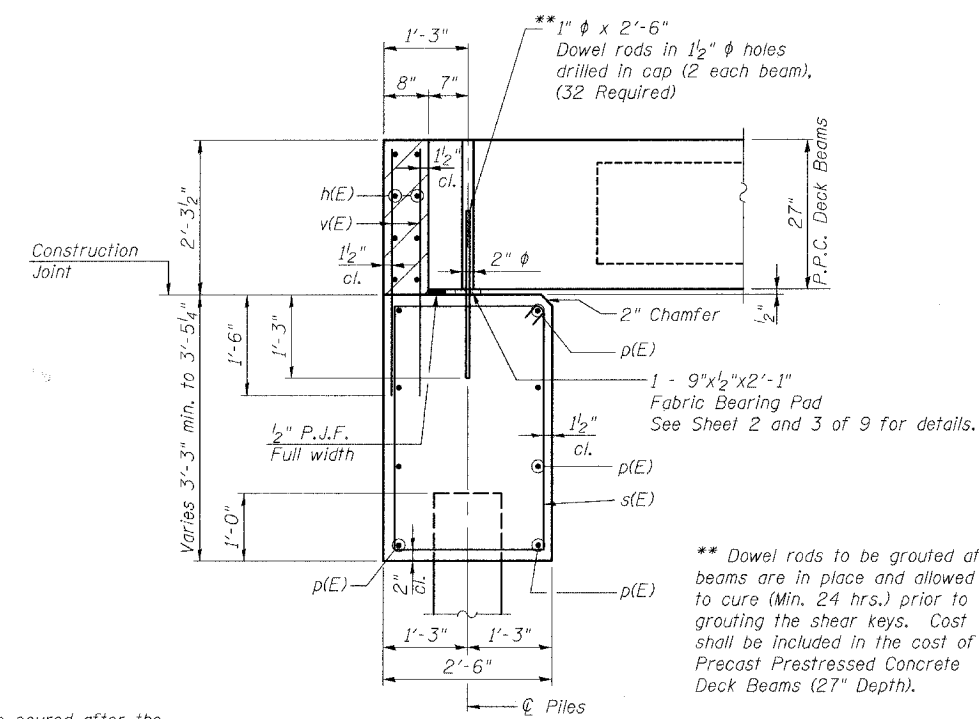
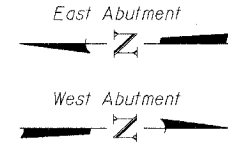
GREENE & BRADFORD, INC.
OF SPRINGFIELD
CONSULTING ENGINEERS
PROFESSIONAL & STRUCTURAL ENGINEERING CORPORATION
101 N. 84th, 101-791-8421, P.O. Box 1, Springfield, IL 62762

COMPUTER FILE NO.
SN0113405:04
PROJECT 05228
6/27/06-MML

STATE OF ILLINOIS
 DEPARTMENT OF TRANSPORTATION



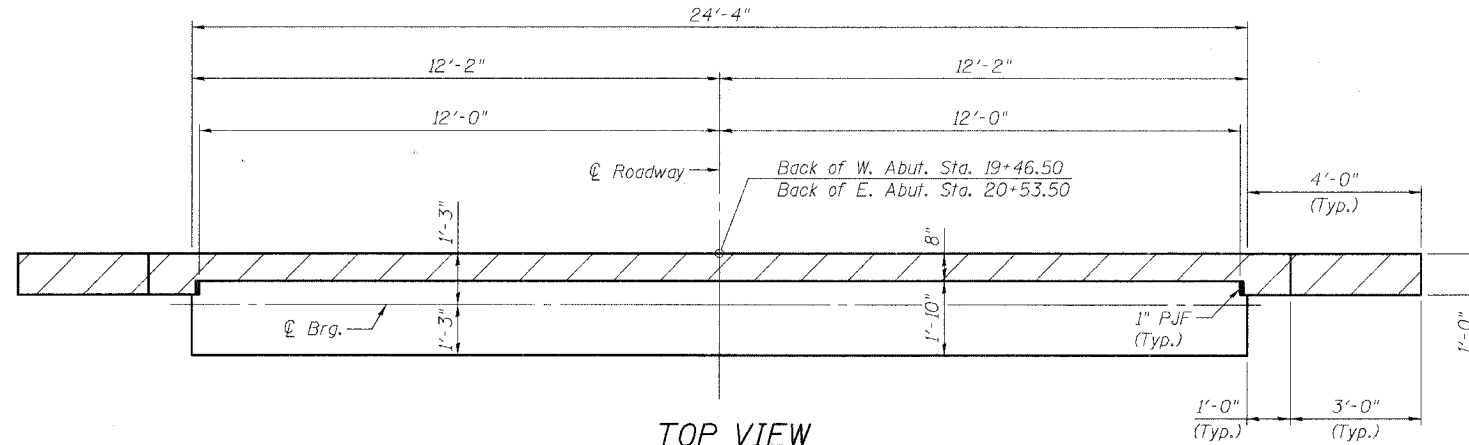
ELEVATION
 (Looking West - West Abutment)
 (Looking East - East Abutment)



SECTION THRU ABUTMENT

PILE DATA

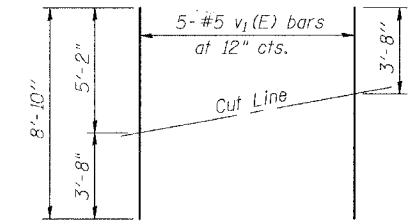
Type: 12" Metal Shell Piles (1/4" shell)
 Capacity: 35 Tons - West Abut.
 30 Tons - East Abut.
 Est. Length: 38' - West Abut.
 18' - East Abut.
 No. Required: West Abut. 4+1 Test Pile
 East Abut. 5



TOP VIEW

NOTES

The hatched area shall be poured after the beams are in place. The backwall shall be cast against the beams.
 Space reinforcement bars in cap to miss dowel rods.



***** FIELD CUTTING DIAGRAM**

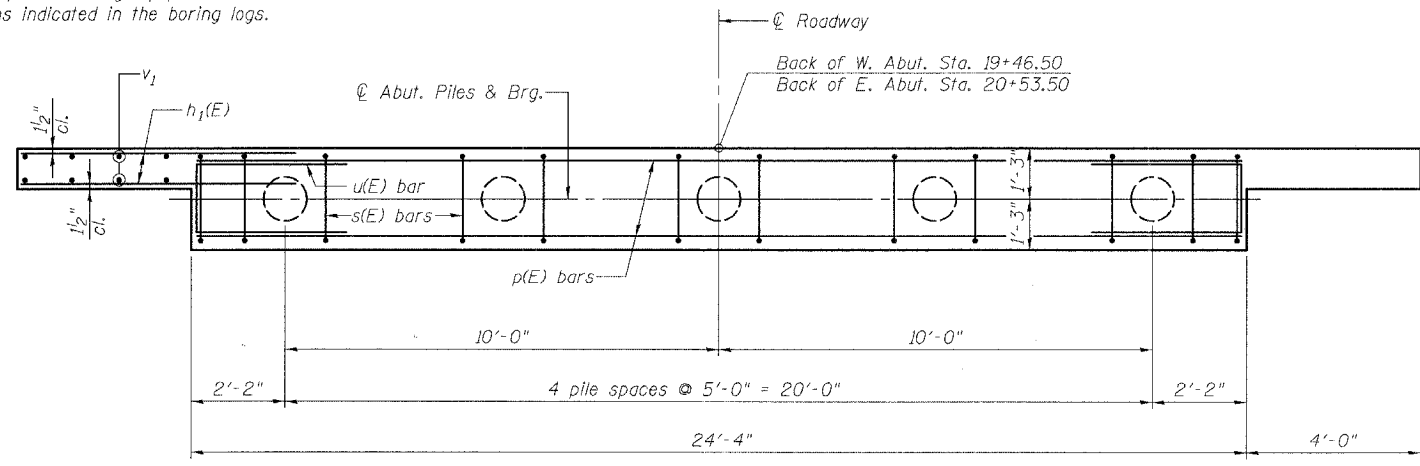
Order v1(E) bars full length. Cut as shown and use remainder of bars in opposite face.

BILL OF MATERIAL TWO ABUTMENTS

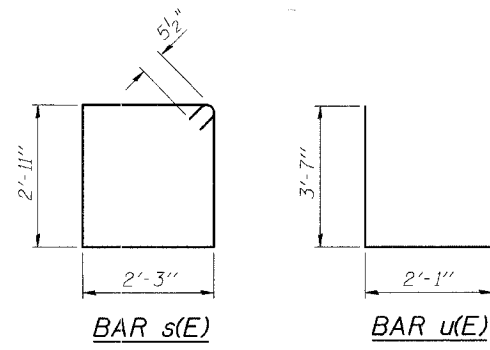
Bar	No.	Size	Length	Shape
h(E)	16	#5	24'-0"	—
h1(E)	64	#5	6'-3"	—
p(E)	16	#7	24'-0"	—
s(E)	48	#5	11'-3"	□
u(E)	16	#6	9'-3"	□
v(E)	100	#5	3'-8"	—
v1(E)	20	#5	8'-10"	—

Concrete Structures	Cu. Yd.	20.6
Reinforcement Bars, Epoxy Coated	Pound	2950
Furnishing Metal Shell Piles 12"	Foot	242
Structure Excavation	Cu. Yd.	19
Driving Piles	Foot	242
Test Pile Metal Shells	Each	1

Reinforcement bars designated (E) shall be epoxy coated



PLAN



BAR s(E)

BAR u(E)

REVISIONS

NAME	DATE

ILLINOIS DEPARTMENT OF TRANSPORTATION

ABUTMENTS

TR 151 OVER BRUSHY BRANCH CREEK
 SECTION 93-08107-00-BR
 CHRISTIAN COUNTY
 STATION 20+00.00
 S.N. 011-3405

SCALE: VERT. HORIZ.
 DATE: 4/8/06

DRAWN BY: LANDREY
 DESIGNED BY: MATHUR
 CHECKED BY: TRELLO

GREENE & BRADFORD, INC.
 OF SPRINGFIELD

COMPUTER FILE NO.
 SN0113405t05

PROJECT 05228
 6/27/06-MML

FILE NAME = J:\05228\DRAWINGS\SN013405\SN013405.dgn
 PLOT DATE = 06/27/06
 PLOT TIME = 2:05:40 PM
 OPERATOR = mtchellie

STATE OF ILLINOIS
DEPARTMENT OF TRANSPORTATION

ROUTE NO.	SECTION	COUNTY	TOTAL SHEETS	SHEET NO.
TR 151	*	CHRISTIAN	20	10
FED. ROAD DIST. NO.	ILLINOIS	FED. AID PROJECT		
			* 93-08107-00-BR	

SHEET NO. 6
9 SHEETS

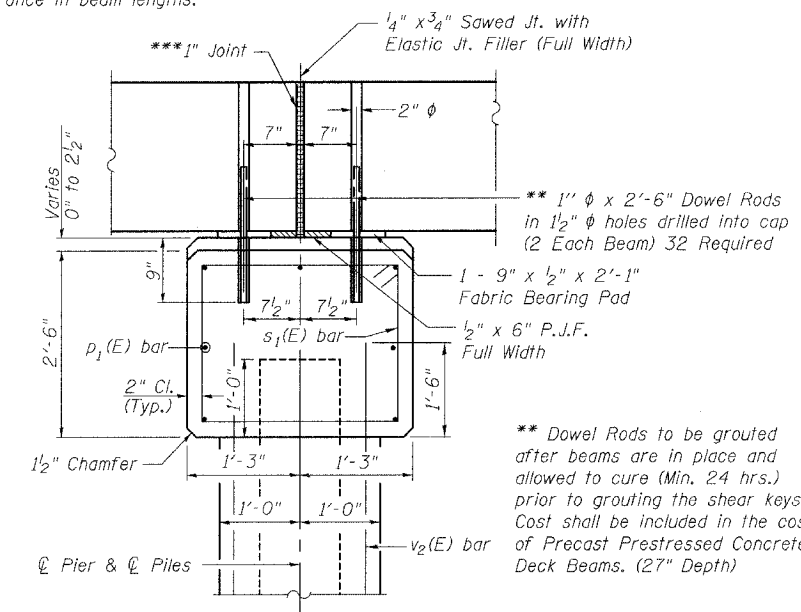
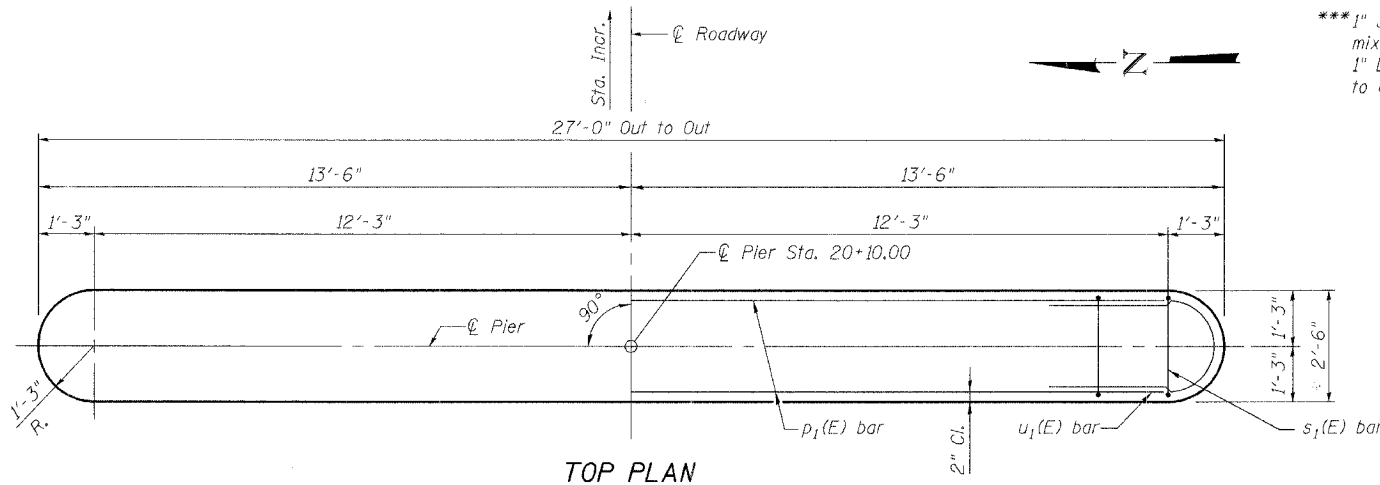
PILE DATA

Type: 12" Φ Metal Shell (1/4" shell)
Capacity: 45 Tons
Est. Length: 30'
No. Required: 5 + 1 Test Pile

NOTES

Space reinforcement bars in cap to miss dowel rods.

*** 1" Jt. shall be packed with a very dry mix of 2:1 sand and P.C. mortar.
1" Dimension may vary plus or minus to accommodate tolerance in beam lengths.



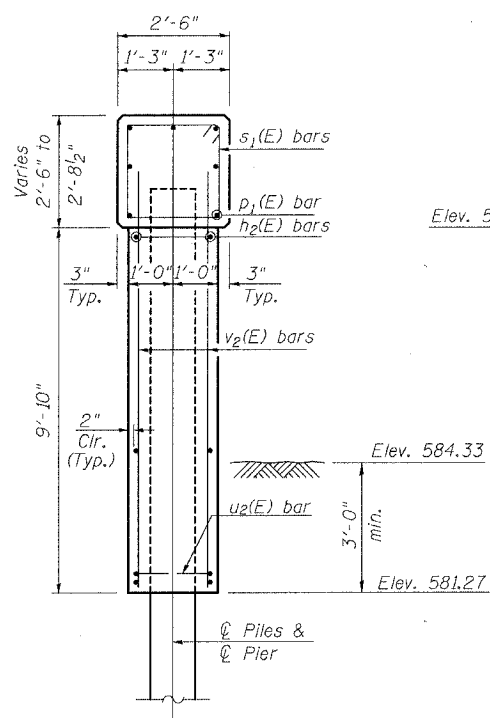
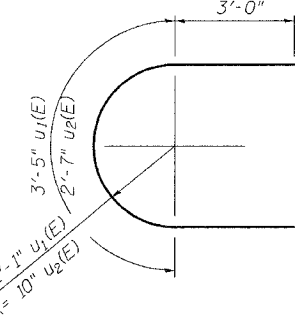
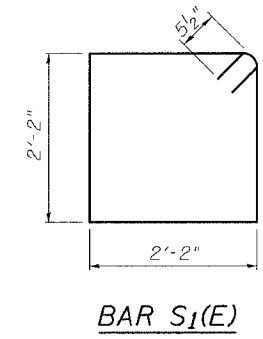
** Dowel Rods to be grouted after beams are in place and allowed to cure (Min. 24 hrs.) prior to grouting the shear keys. Cost shall be included in the cost of Precast Prestressed Concrete Deck Beams. (27" Depth)

**SECTION THRU PIER ONE PIER
BILL OF MATERIAL**

BAR	NO.	SIZE	LENGTH	SHAPE
$h_2(E)$	20	#5	24'-6"	—
$p_1(E)$	7	#7	24'-6"	—
$s_1(E)$	22	#4	9'-7"	□
$u_1(E)$	6	#5	9'-5"	U
$u_2(E)$	20	#5	8'-7"	U
$v_2(E)$	56	#5	11'-2"	—

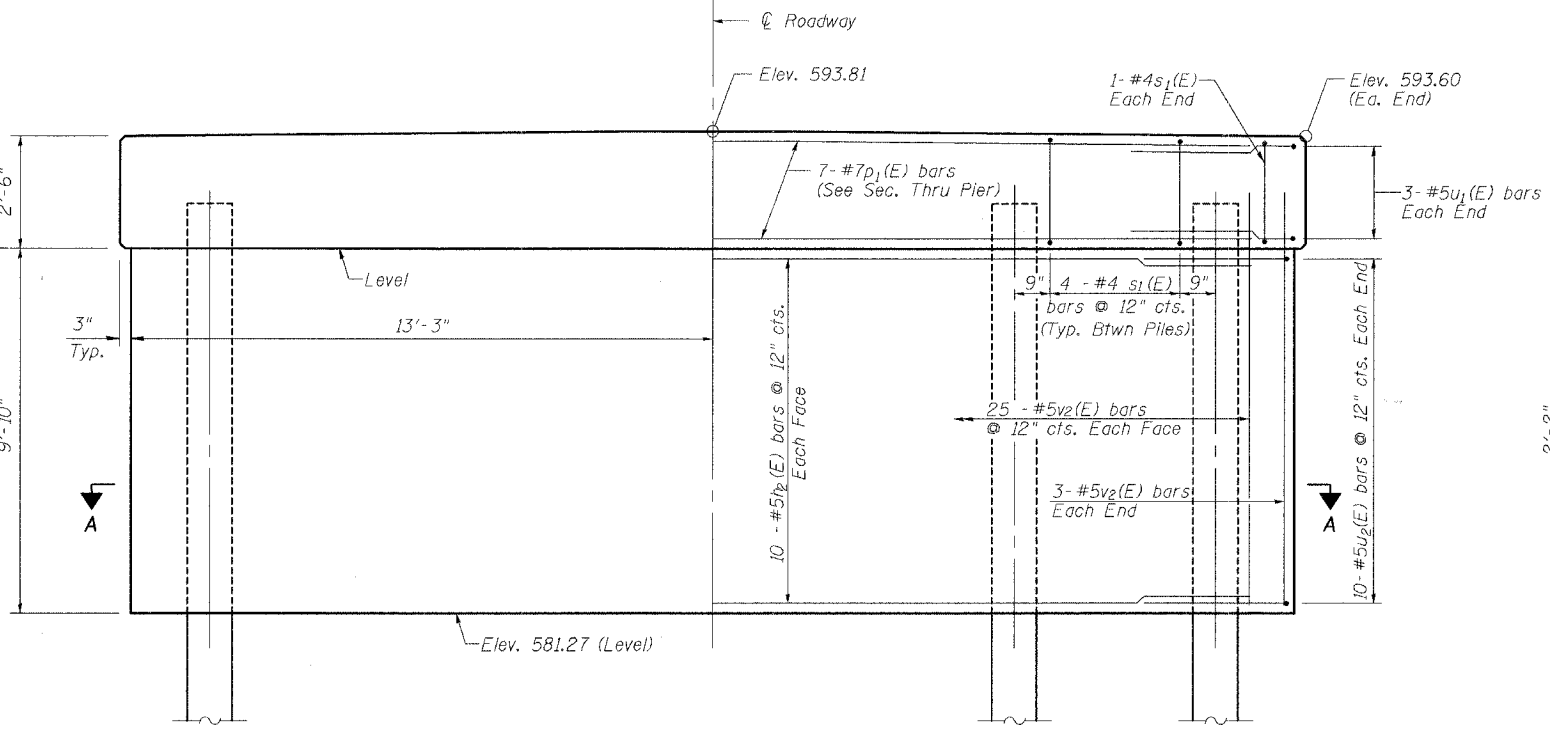
Concrete Structures	Cu. Yd.	23.6
Reinforcement Bars, Epoxy Coated	Pound	1890
Furnishing Metal Shell Piles 12"	Foot	150
Driving Piles	Foot	150
Test Pile Metal Shells	Each	1
Structure Excavation	Cu. Yd.	21
Underwater Structure Excavation Protection Location 1 (Pier)	Each	1

Reinforcement bars designated (E) shall be epoxy coated.

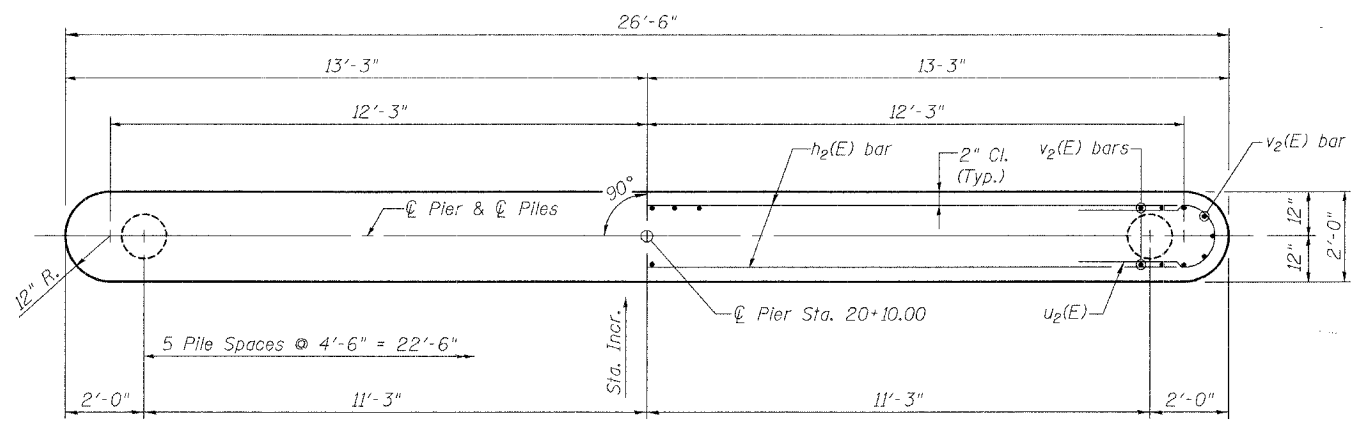


SEC THRU PIER

Note:
Hard driving may be encountered during pile driving operations. The Contractor shall provide the appropriate driving equipment for soil conditions indicated in the boring logs.



ELEVATION



SEC A-A

REVISIONS	
NAME	DATE

ILLINOIS DEPARTMENT OF TRANSPORTATION
PIER
TR 151 OVER BRUSHY BRANCH CREEK
SECTION 93-08107-00-BR
CHRISTIAN COUNTY
STATION 20+00.00
S.N. 011-3405

SCALE: VERT. _____
HORIZ. _____
DATE: 4/8/06

DRAWN BY: LANDREY
DESIGNED BY: MATHUR
CHECKED BY: TRELLO

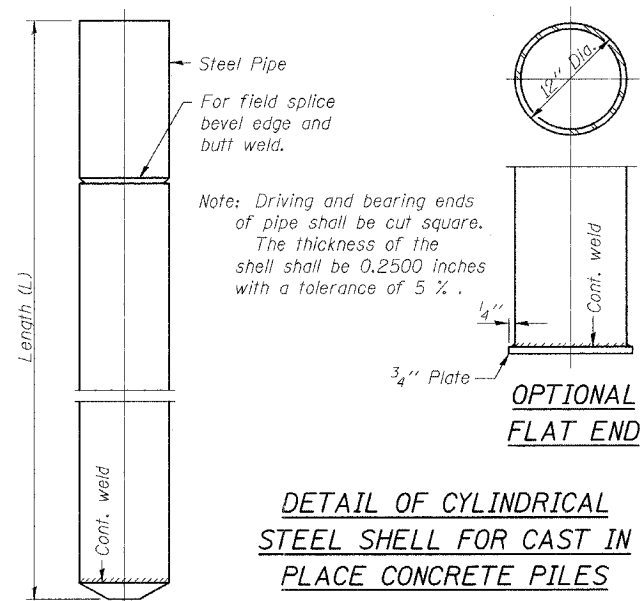
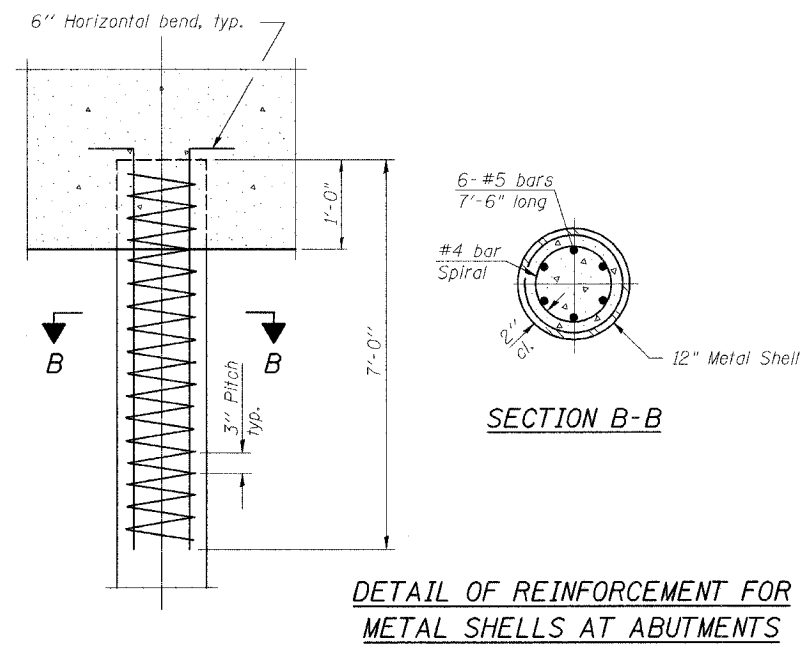
GREENE & BRADFORD, INC.
OF SPRINGFIELD
REGISTERED PROFESSIONAL ENGINEERS
ILLINOIS LICENSE NO. 021-0000000
PROFESSIONAL SEAL THE STATE OF ILLINOIS
SINCE 1924, 227 W. 22ND ST., SPRINGFIELD, ILL. 62761-1000

COMPUTER FILE NO.
SN0113405:06
PROJECT 05228
6/27/06-MML

FILE NAME = J:\05228\DRAWINGS\SN0113405\SN0113405.dgn
PLOT SCALE = 0.0833
PLOT DATE = 8/14/2006
OPERATOR = mitchell

STATE OF ILLINOIS
DEPARTMENT OF TRANSPORTATION

ROUTE NO.	SECTION	COUNTY	TOTAL SHEETS	SHEET NO.	SHEET NO. 7 9 SHEETS
TR 151	#	CHRISTIAN	20	11	
FED. ROAD DIST. NO.	ILLINOIS	FED. AID PROJECT-	* 93-08107-00-BR		



REVISIONS	
NAME	DATE

ILLINOIS DEPARTMENT OF TRANSPORTATION

CONCRETE PILE DETAILS

TR 151 OVER BRUSHY BRANCH CREEK
SECTION 93-08107-00-BR
CHRISTIAN COUNTY
STATION 20+00.00
S.N. 011-3405

SCALE: VERT. DRAWN BY: LANDREY
 HORIZ. DESIGNED BY: MATHUR
DATE: 4/8/06 CHECKED BY: TRELLO

GREENE & BRADFORD, INC.
OF SPRINGFIELD
CONSULTING ENGINEERS
PROFESSIONAL ENGINEERING CORPORATION
217-535-5544 FAX 217-535-5545 www.greenegbradford.com

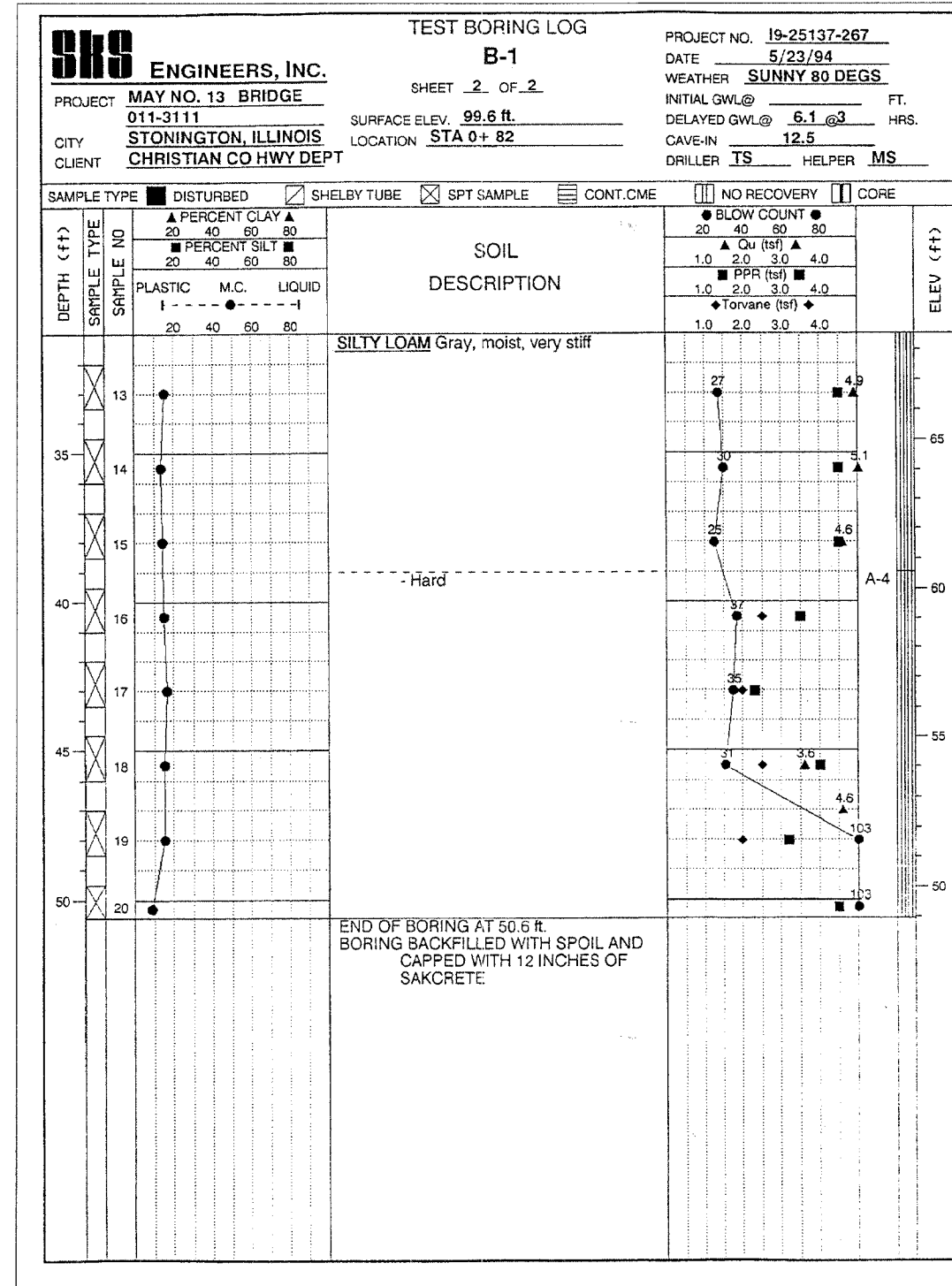
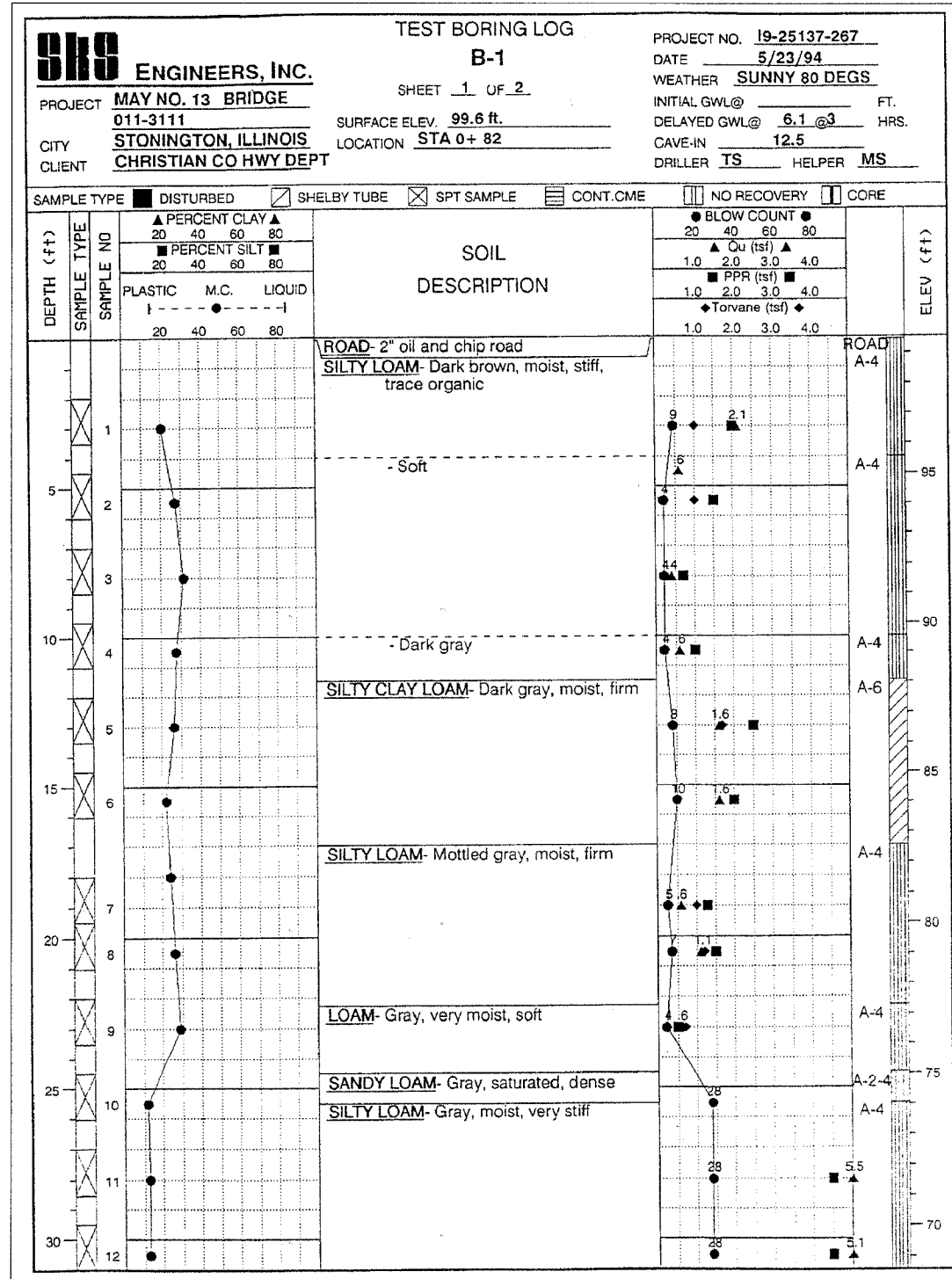
COMPUTER FILE NO. SN0113405:07
PROJECT 05228
6/27/06-MML

FILE NAME = J:\05228\DRAWINGS\SN0113405\SN0113405.dwg
PLOT SCALE = 1/8"=1'-0"
PLOT DATE = 8/14/2006
PLOT TIME = 2:06:22 PM
OPERATOR = mitchell

STATE OF ILLINOIS
DEPARTMENT OF TRANSPORTATION

ROUTE NO.	SECTION	COUNTY	DATE	SHEET NO.
TR 151	*	CHRISTIAN	20	12
FED. ROAD DIST. NO.	ILLINOIS	FED. AID PROJECT		
* 93-08107-00-BR				

BORING NO. 1



FILE NAME = J:\05228\DRAWINGS\SN0113405\SN0113405.dgn
PLOT SCALE = 0.0833 / 1000 = XES_BB50_ENC_BRIDGE.plt
PLOT DATE = 5/27/06
OPERATOR = michael

ILLINOIS DEPARTMENT OF TRANSPORTATION
BORING LOGS
TR 151 OVER BRUSHY BRANCH CREEK
SECTION 93-08107-00-BR
CHRISTIAN COUNTY
STATION 20+00.00
S.N. 011-3405

REVISIONS	
NAME	DATE

SCALE: VERT. 1"=10'
HORIZ. 1"=100'
DATE: 4/8/06

DRAWN BY: LANDREY
DESIGNED BY: MATHUR
CHECKED BY: TRELLO

COMPUTER FILE NO. SN0113405:08
PROJECT 05228
6/27/06-MML



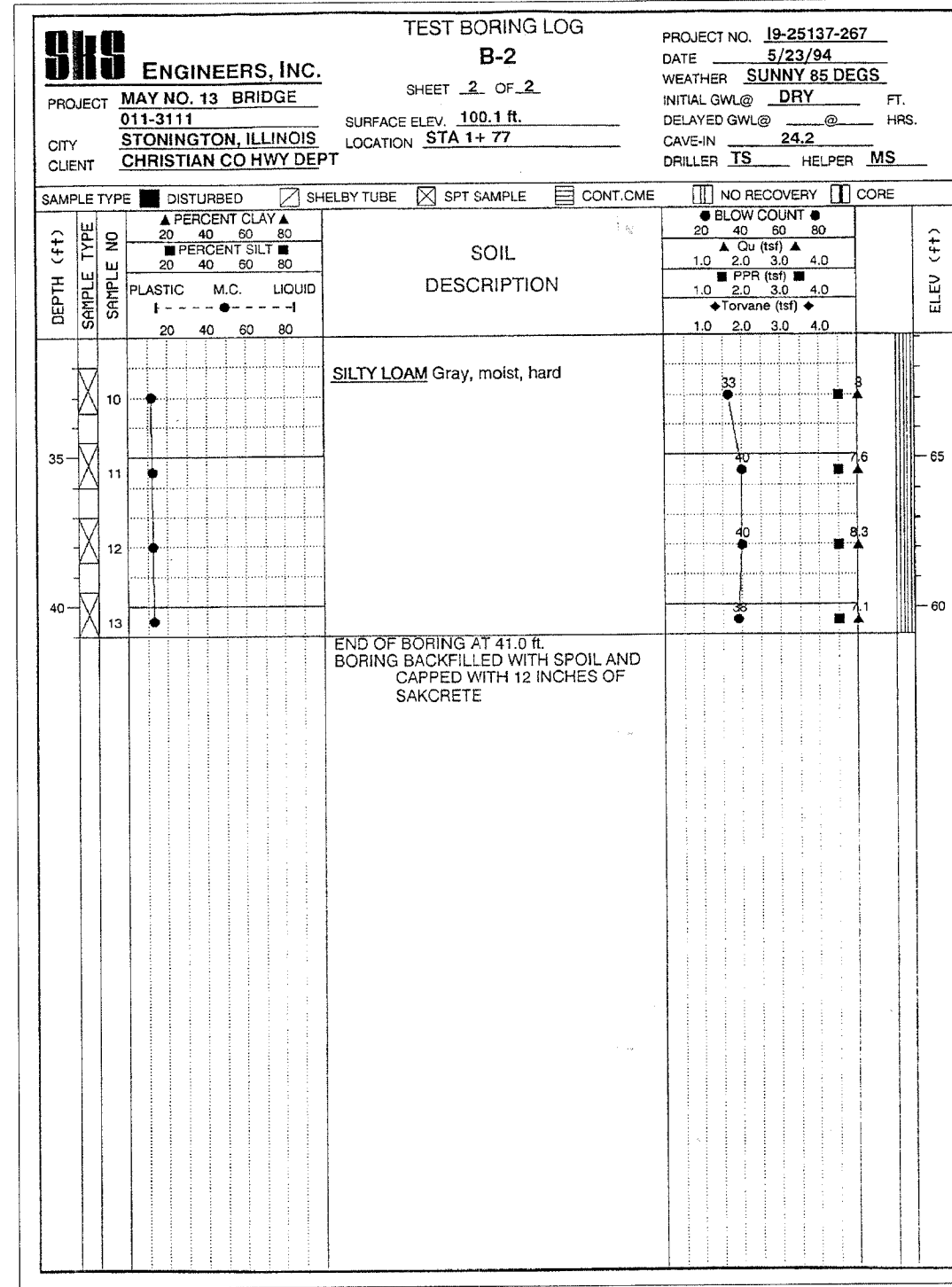
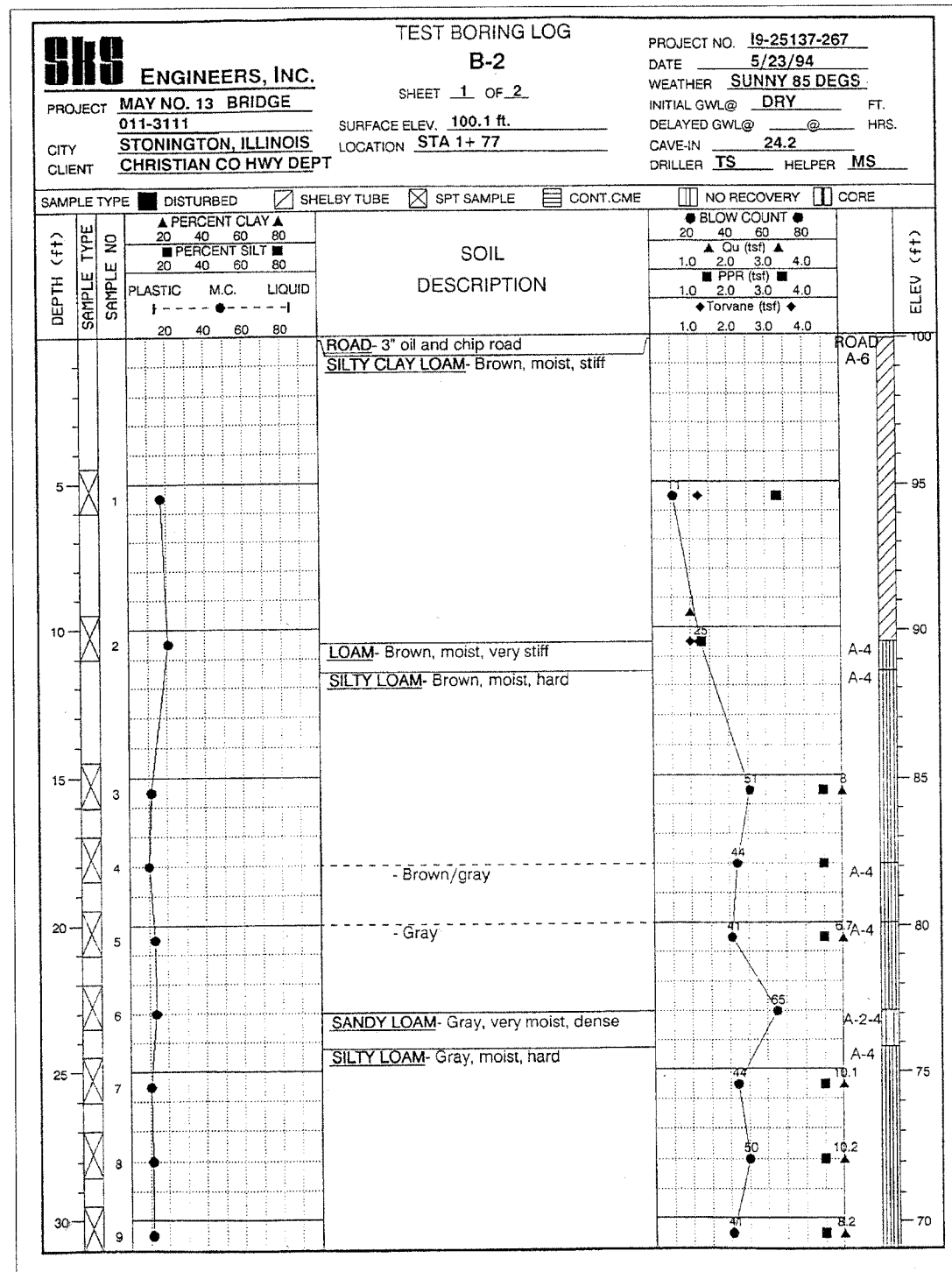
STATE OF ILLINOIS
DEPARTMENT OF TRANSPORTATION

ROUTE NO.	SECTION	COUNTY	TOTAL SHEETS	SHEET NO.
TR 151	*	CHRISTIAN	20	13
FED. ROAD DIST. NO.		ILLINOIS	FED. AID PROJECT	

SHEET NO. 9
9 SHEETS

* 93-08107-00-BR

BORING NO. 2



FILE NAME = J:\05228\DRAWINGS\SN0113405\SN013405.dgn
PLOT SCALE = 0.0833306
PLOT TIME = 2:07:45 PM
OPERATOR = mtcheil@i

REVISIONS	
NAME	DATE

SCALE: VERT. _____
HORIZ. _____
DATE: 4/8/06

DRAWN BY: LANDREY
DESIGNED BY: MATHUR
CHECKED BY: TRELLO

GREEN & BRADFORD, INC.
OF SPRINGFIELD
CONSULTING ENGINEERS
PROFESSIONAL ENGINEERS
ILLINOIS LICENSE NO. 021-000000
PROFESSIONAL SURVEYORS
ILLINOIS LICENSE NO. 021-000000

COMPUTER FILE NO.
SN0113405:09
PROJECT 05228
6/27/06-MML

ILLINOIS DEPARTMENT OF TRANSPORTATION
BORING LOGS
TR 151 OVER BRUSHY BRANCH CREEK
SECTION 93-08107-00-BR
CHRISTIAN COUNTY
STATION 20+00.00
S.N. 011-3405

93427

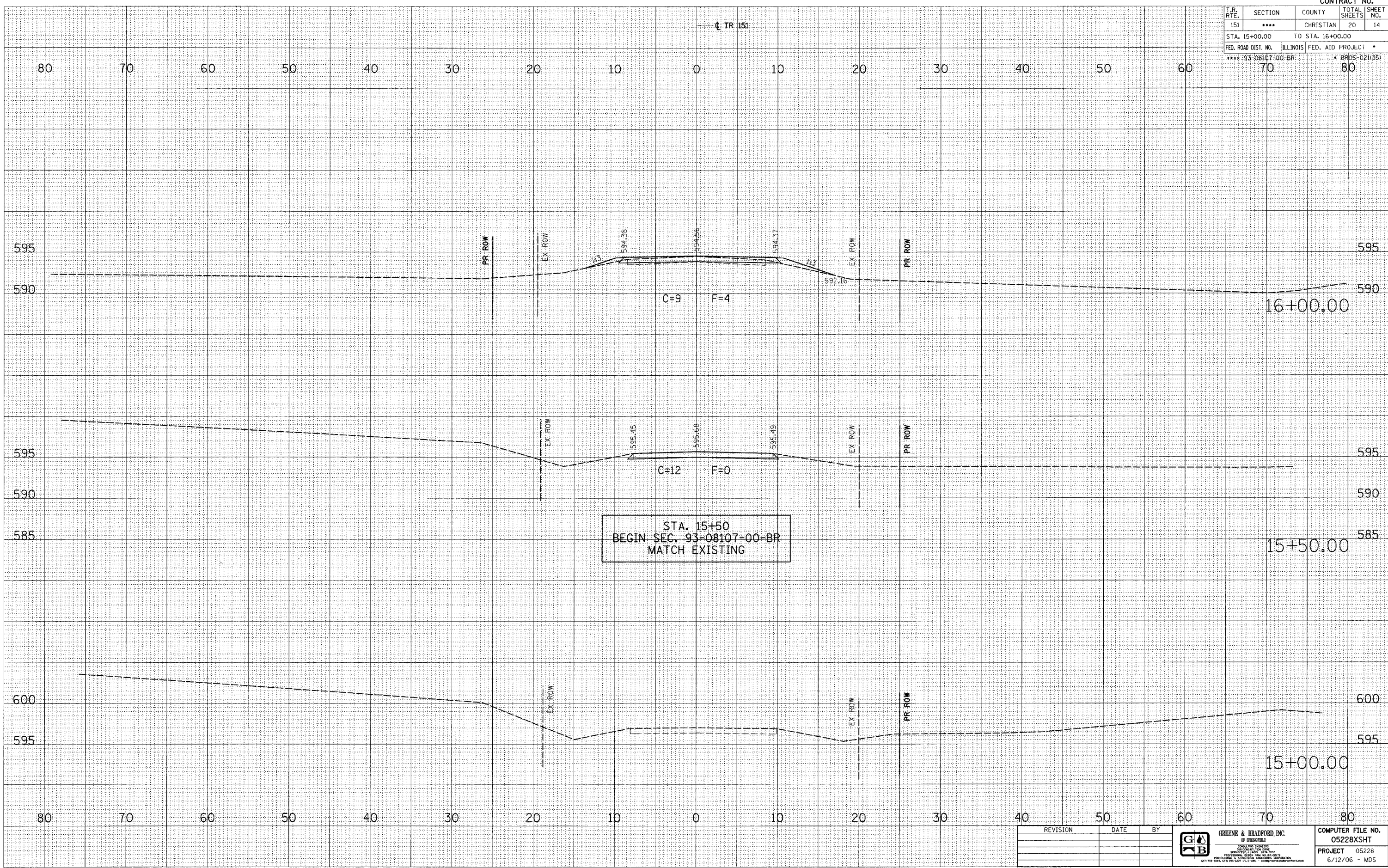
CONTRACT NO.

T.R. RTE.	SECTION	COUNTY	TOTAL SHEETS	SHEET NO.
151	****	CHRISTIAN	20	14
STA. 15+00.00		TO STA. 16+00.00		
FED. ROAD DIST. NO.		ILLINOIS	FED. AID PROJECT *	
**** 93-08107-00-BR		* BRIDGE 021(35)		

FINAL SURVEY	DATE
SURVEYED	
PLOTTED	
TEMPLATE	
NOTE BOOK	
AREAS CHECKED	
NO.	

ORIGINAL SURVEY	DATE
SURVEYED	
PLOTTED	
TEMPLATE	
NOTE BOOK	
AREAS CHECKED	
NO.	

PLOT DATE = 8/14/2006
 FILE NAME = J:\05228 DRAWINGS\05228XSHT.dwg
 PLOT SCALE = 5/8" = 1' IN.
 REFERENCE = .REF.
 OPERATOR = GP/SJ



REVISION	DATE	BY

GREENE & BRADFORD, INC.
 ENGINEERS & ARCHITECTS
 12115 SHAWNEE BLVD. SUITE 200
 GREENWOOD, MISSISSIPPI 39228
 (662) 833-1111 FAX (662) 833-1112 www.greenegbradford.com

COMPUTER FILE NO.
05228XSHT
PROJECT 05228
6/12/06 - MDS

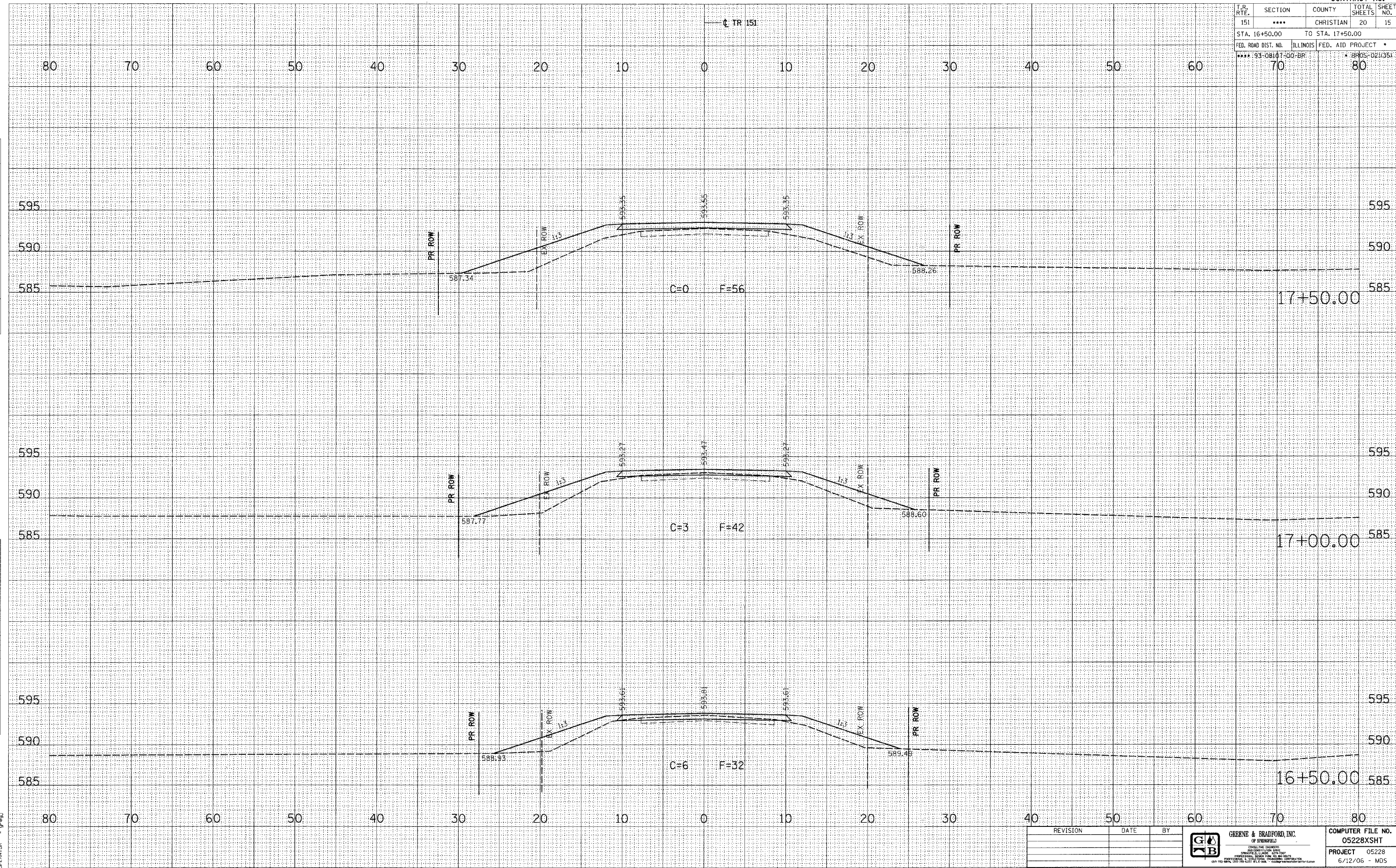
CHRISTIAN COUNTY / MAY ROAD DISTRICT - TR 151 - CROSS SECTIONS

T.R. RTE.	SECTION	COUNTY	TOTAL SHEETS	SHEET NO.
151	***	CHRISTIAN	20	15
STA. 16+50.00 TO STA. 17+50.00				
FED. ROAD DIST. NO.		ILLINOIS	FED. AID PROJECT	
*** 93-08147-00-BP			* BR05-021/351	

FINAL SURVEY	SURVEYED	DATE
NOTE BOOK	NO. _____	
AREAS CHECKED		

ORIGINAL SURVEY	SURVEYED	DATE
NOTE BOOK	NO. _____	
AREAS CHECKED		

PLOT DATE = 6/14/2006
 FILE NAME = J:\PROJECTS\DRAWINGS\05228XSHT.dwg
 REFERENCE = REF
 OPERATOR = gpbj



REVISION	DATE	BY

GREENE & BRADFORD, INC.
 OF SPRINGFIELD
 ENGINEERS & ARCHITECTS
 1000 W. WASHINGTON ST., SUITE 100
 SPRINGFIELD, ILLINOIS 62760
 PHONE: 217-223-8800 FAX: 217-223-8801
 WWW.GREENE-AND-BRADFORD.COM

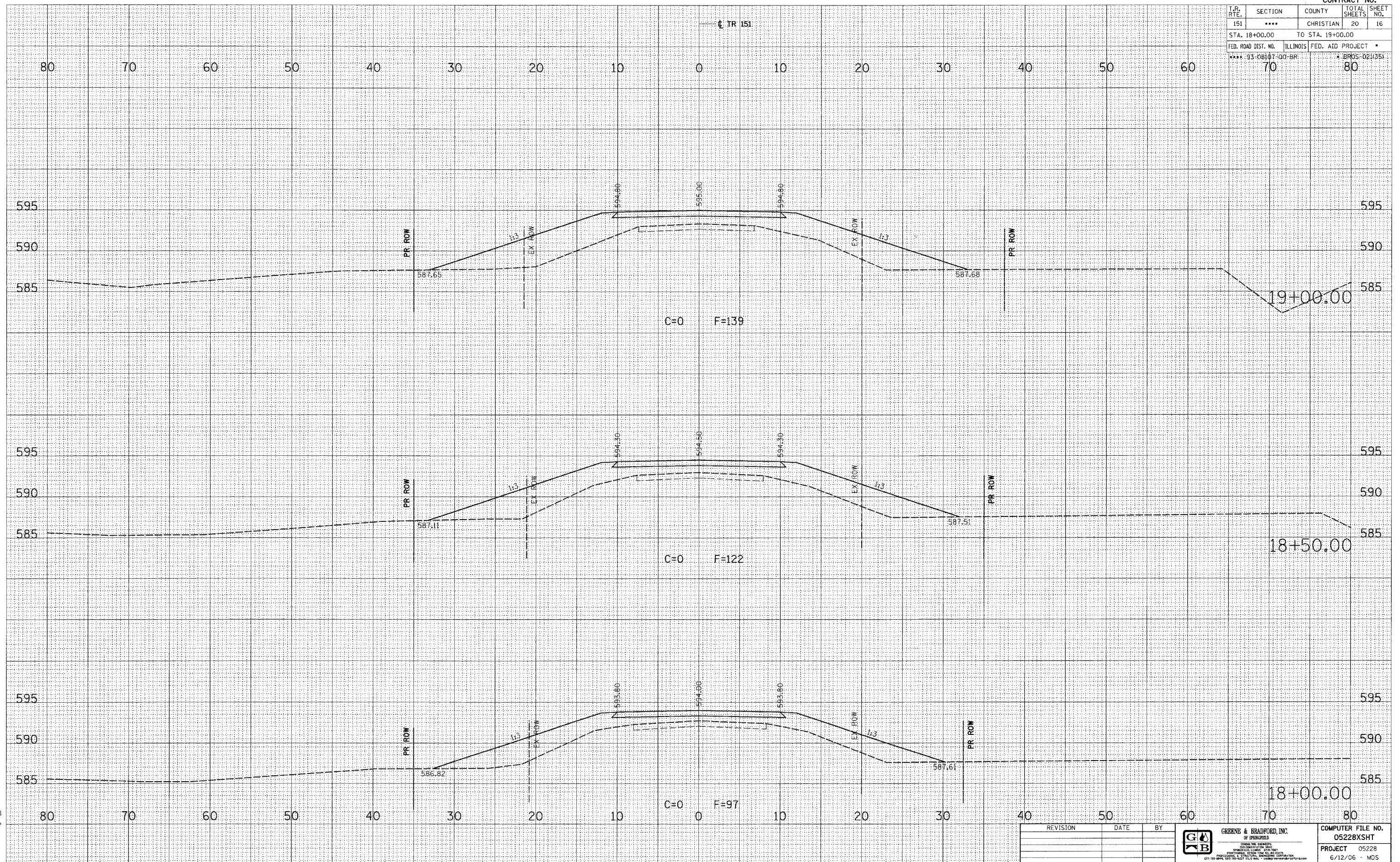
COMPUTER FILE NO. 05228XSHT
 PROJECT 05228
 6/12/06 - MDS

T.R. RTE.	SECTION	COUNTY	TOTAL SHEETS	SHEET NO.
151	****	CHRISTIAN	20	16
STA. 18+00.00		TO STA. 19+00.00		
FED. ROAD DIST. NO.		ILLINOIS FED. AID PROJECT		
*** 93-08187-00-BR		4 PROS-021(35)		
70		80		

FINAL SURVEY	DATE
NO. _____	BY _____
REVISIONS	DATE
PLOTTED	BY _____
TEMPLATE	DATE
AREAS CHECKED	BY _____

ORIGINAL SURVEY	DATE
NO. _____	BY _____
REVISIONS	DATE
PLOTTED	BY _____
TEMPLATE	DATE
AREAS CHECKED	BY _____

PLOT DATE = 6/14/2006
 PLOT SCALE = 1/4" = 40.00'
 REFERENCE = REF.
 OPERATOR = BFGJ



REVISION	DATE	BY

GREENE & BRADFORD, INC.
 OF SPRINGFIELD
 CIVIL ENGINEERS
 200 CONVENT ROAD
 SPRINGFIELD, ILLINOIS 62761
 PHONE: 217-223-1111 FAX: 217-223-1112
 WWW.GREENE-AND-BRADFORD.COM

COMPUTER FILE NO.
 05228XSHT
 PROJECT 05228
 6/12/06 MDS

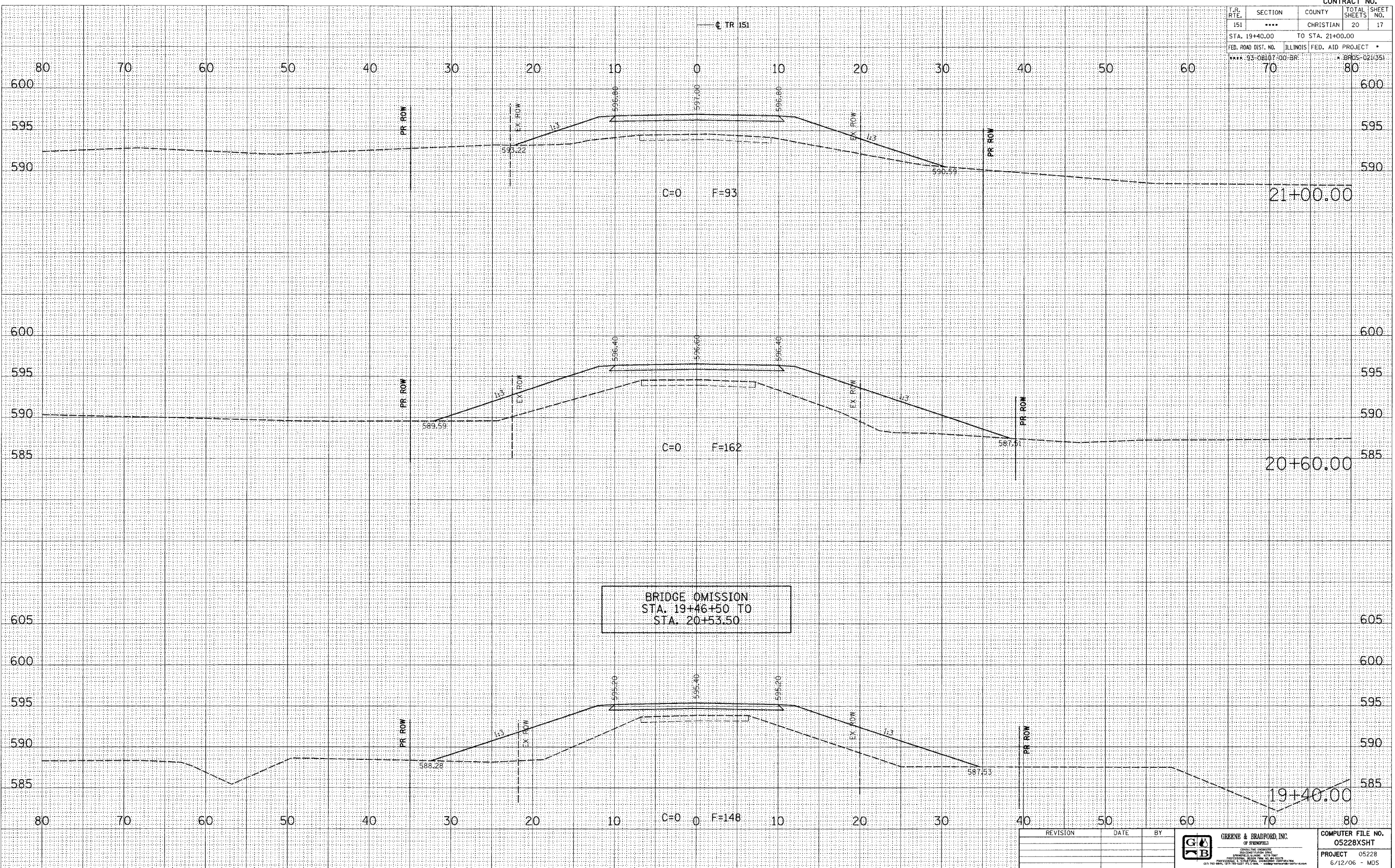
CHRISTIAN COUNTY / MAY ROAD DISTRICT - TR 151 - CROSS SECTIONS

T.R. RTE.	SECTION	COUNTY	TOTAL SHEETS	SHEET NO.
151	***	CHRISTIAN	20	17
STA. 19+40.00		TO STA. 21+00.00		
FED. ROAD DIST. NO.		ILLINOIS FED. AID PROJECT *		
*** 93-08107-00-BR		* BRCS-021/351		
70		80		

FINAL SURVEY	DATE
SURVEYED	
PLOTTED	
NOTE BOOK	
AREAS CHECKED	
NO.	

ORIGINAL SURVEY	DATE
SURVEYED	
PLOTTED	
NOTE BOOK	
AREAS CHECKED	
NO.	

PLOT DATE = 8/14/2006
 FILE NAME = J:\05228\DRAWINGS\05228XSHT.dwg
 REFERENCE = 93-08107-00-BR
 OPERATOR = gfb

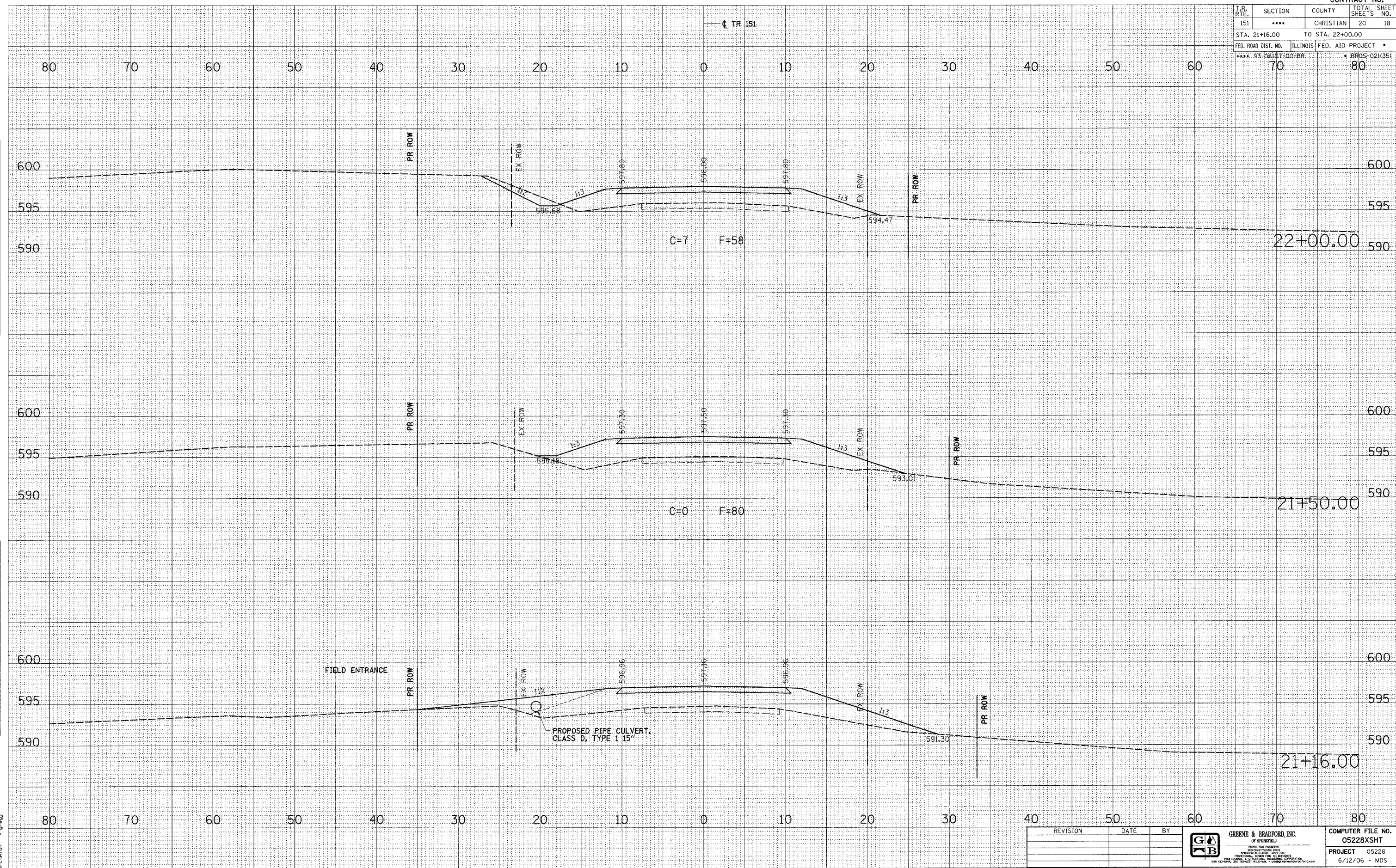


BRIDGE OMISSION
 STA. 19+46+50 TO
 STA. 20+53.50

REVISION	DATE	BY

GREENE & BRADFORD, INC. OF SPRINGFIELD	COMPUTER FILE NO. 05228XSHT
PROJECT 05228	6/12/06 - MDS

T.R. RTE.	SECTION	COUNTY	TOTAL SHEETS	SHEET NO.
151	***	CHRISTIAN	20	18
STA. 21+16.00 TO STA. 22+00.00				
FED. ROAD DIST. NO.		ILLINOIS FED. AID PROJECT		
*** 93-08167-00-BR		* 8905-021(35)		



FINAL SURVEY	DATE
NO.	

ORIGINAL SURVEY	DATE
NO.	

PLOT DATE = 8/14/2006
 FILE NAME = J:\05228\DRAWINGS\05228XSHT.dwg
 REFERENCE = REF
 OPERATOR = gpbj

REVISION	DATE	BY

GREENE & BRADFORD, INC.
 OF SPRINGFIELD
 REGISTERED PROFESSIONAL ENGINEERS
 PROFESSIONAL & TECHNICAL SERVICES CORPORATION
 601 10th St., Springfield, IL 62761-1000

COMPUTER FILE NO. 05228XSHT
 PROJECT 05228
 6/12/06 - MDS

CHRISTIAN COUNTY / MAY ROAD DISTRICT - TR 151 - CROSS SECTIONS

93427

CONTRACT NO.

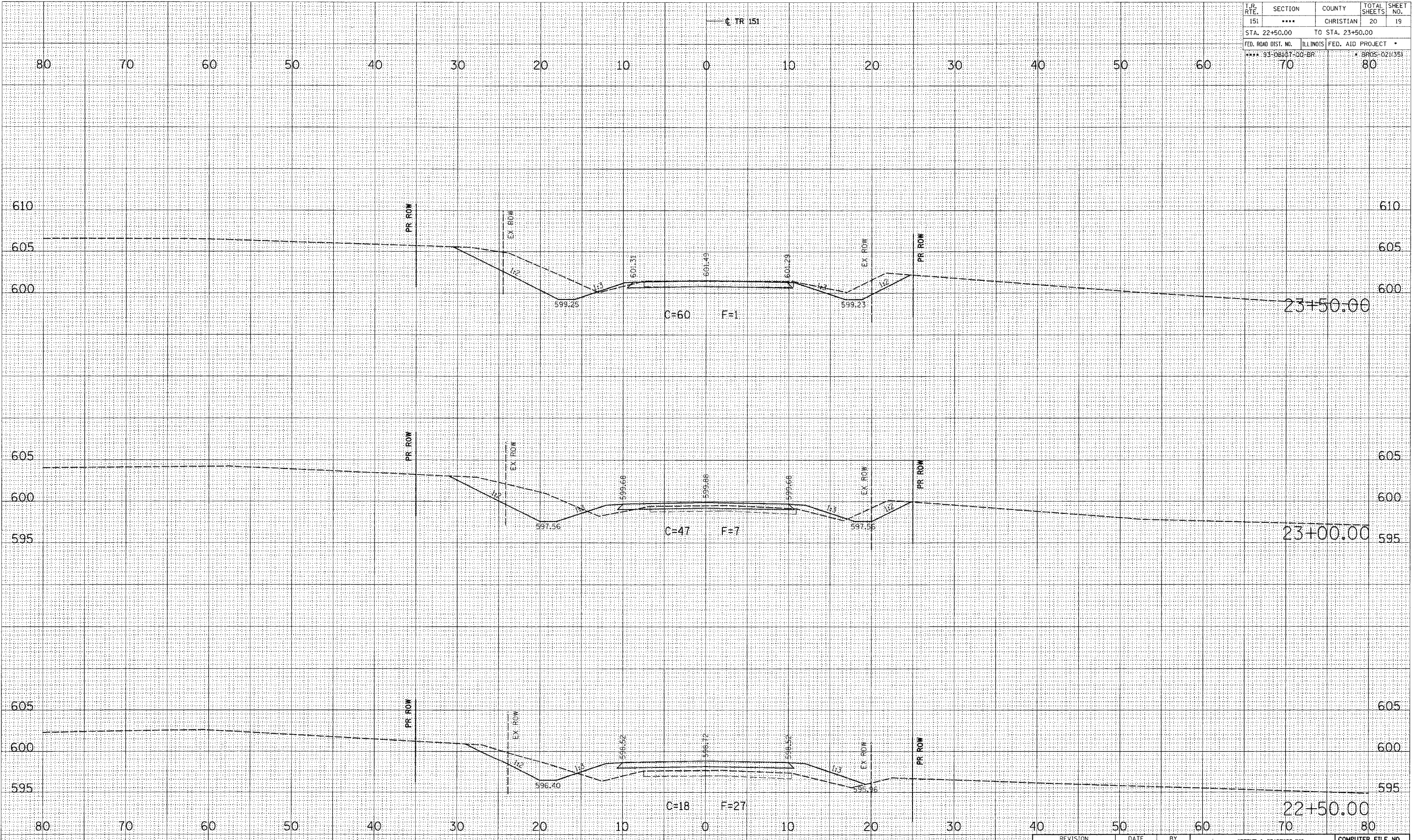
T.R. RTE.	SECTION	COUNTY	TOTAL SHEETS	SHEET NO.
151	****	CHRISTIAN	20	19
STA. 22+50.00		TO STA. 23+50.00		
FED. ROAD DIST. NO.		ILLINOIS FED. AID PROJECT		*
**** 93-08107-00-DR		BROS-021/351		
70		80		

BY	DATE

BY	DATE

ORIGINAL SURVEY
 SURVEYED
 PLOTTED
 CHECKED
 NOTE BOOK
 AREAS CHECKED
 NO.

PLOT DATE = 8/14/2006
 FILE NAME = J:\05228\DRAWINGS\05228XSHT.dwg
 REFERENCE = 05228 / IN.
 OPERATOR = gpbj



REVISION	DATE	BY

GREENS & BRADFORD, INC.
 OF SPRINGFIELD
 CONSULTING ENGINEERS
 ARCHITECTS/PLANNERS
 PROFESSIONAL ENGINEERS
 REGISTERED PROFESSIONAL LAND SURVEYORS
 801 783 8844 / 801 783 1427 / FAX 801 783 8844 / www.greenbradford.com

COMPUTER FILE NO.
 05228XSHT
 PROJECT 05228
 6/12/06 - MDS

CHRISTIAN COUNTY / MAY ROAD DISTRICT - TR 151 - CROSS SECTIONS

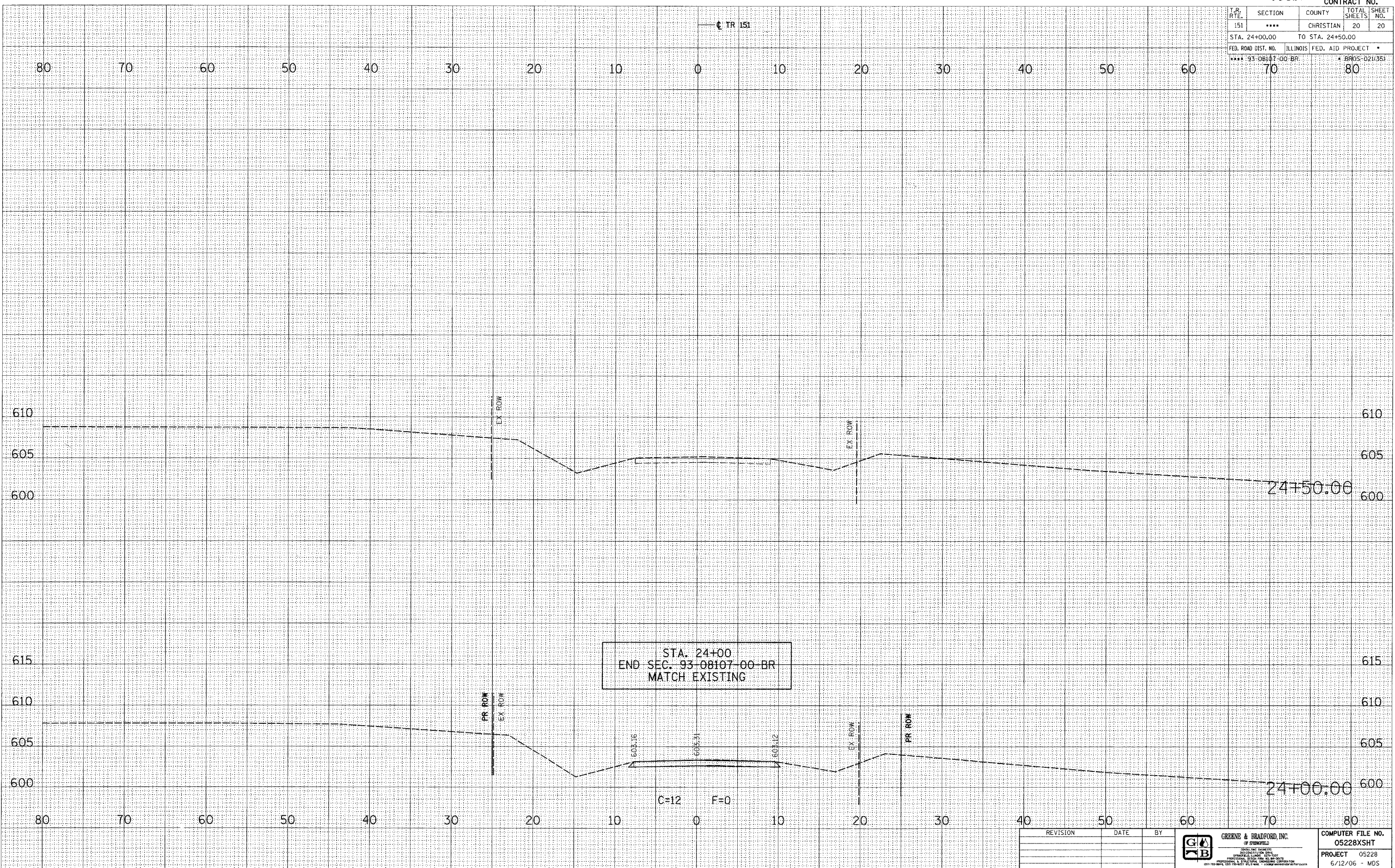
T.R. RTE.	SECTION	COUNTY	TOTAL SHEETS	SHEET NO.
151	****	CHRISTIAN	20	20
STA. 24+00.00 TO STA. 24+50.00				
FED. ROAD DIST. NO. ILLINOIS FED. AID PROJECT				
**** 93-08107-00 BR			***** 0211351	
70			80	

TR 151

FINAL SURVEY	BY	DATE
SURVEYED		
PLOTTED		
NOTE BOOK		
AREAS CHECKED		
NO.		

ORIGINAL SURVEY	BY	DATE
SURVEYED		
PLOTTED		
NOTE BOOK		
AREAS CHECKED		
NO.		

PLOT DATE = 8/16/2006
 FILE NAME = J:\25228\DRAWINGS\05228XSHT.dwg
 REFERENCE = REF
 OPERATOR = msp-k



STA. 24+00
 END SEC. 93-08107-00-BR
 MATCH EXISTING

REVISION	DATE	BY

GREENE & BRADFORD, INC.
 OF SPRINGFIELD
 REGISTERED PROFESSIONAL ENGINEERS
 ILLINOIS LICENSE NO. 001-00000000
 PROFESSIONAL ENGINEERING FIRM NO. 001-00000000
 1011 193 804C 103 7th St. St. Louis, MO 63101
 (314) 437-7000 FAX (314) 437-7001

COMPUTER FILE NO.
 05228XSHT
 PROJECT 05228
 6/12/06 - MDS