

93441

COUNTY	ROUTE	SECTION	TOTAL SHEETS	SHEET NO.
ADAMS	FAS 584	06-00198-00-RS	7	1

INDEX OF SHEETS:

SHEET NO.	SHEET
1	TITLE SHEET
2	SUMMARY OF QUANTITIES
	GENERAL NOTES
3	TYPICAL CROSS SECTIONS
4-6	PLAN SHEETS
7	SIDE ROAD & ENTRANCE DETAILS
	BUTT JOINT DETAIL
STANDARD	701001-01
STANDARD	701006-02
STANDARD	701301-02
STANDARD	701306-01
STANDARD	702001-06
STANDARD	BLR 24-1

STATE OF ILLINOIS
DEPARTMENT OF TRANSPORTATION
DIVISION OF HIGHWAYS
PLANS FOR PROPOSED

SURFACE TRANSPORTATION/RURAL PROGRAM
LOCAL AGENCY PAVEMENT PRESERVATION

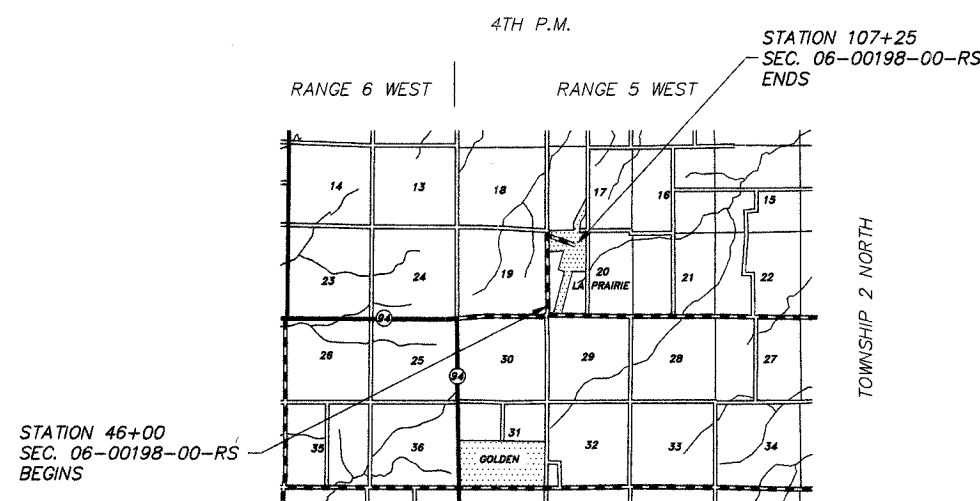
FAS 584 (C.H. 59) SECTION 06-00198-00-RS ADAMS COUNTY
PROJECT NO. RS-584(109) JOB NO. C-96-226-06



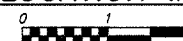
PROPOSED IMPROVEMENT MARKED THUS —

THESE PLANS WERE PREPARED BY ME OR BY A FULL-TIME MEMBER OF MY STAFF WORKING UNDER MY PERSONAL SUPERVISION.

SUBMITTED BY Richard A. Klump DATE 4-10-07
COUNTY ENGINEER
LICENSE NO. 062-032961
LIC. EXPIRES 11/30/2007



LOCATION MAP



FUNCTIONAL CLASS: MAJOR COLLECTOR (NON-URBAN)
ADT=300

PROPOSED IMPROVEMENT CONSISTS OF PLACING 2" POLYMERIZED HOT-MIX ASPHALT SURFACE COURSE, MIX "C", N50 ON THE EXISTING 22' ROADWAY WITH OTHER MISCELLANEOUS CONSTRUCTION

UTILITIES:

J.U.L.I.E.	1-800-892-0123
ADAMS TELEPHONE	GOLDEN, IL
ADAMS RURAL ELECTRICAL CO-OP	CAMP POINT, IL
ABS WATER DISTRICT	GOLDEN, IL
CLAYTON - CAMP POINT WATER	CAMP POINT, IL
WIPCO	CARTHAGE, IL

GROSS LENGTH:
STA. 46+00.00 TO STA. 107+25.00 = 6,125.00 FT.
NET LENGTH TO BE IMPROVED: 6,125.00 FT. = 1.160 MILES

APPROVED April 10 2007
Richard A. Klump
COUNTY ENGINEER

PASSED APRIL 13, 2007
John J. Sullivan
DISTRICT ENGINEER OF CONSTRUCTION

PASSED April 13, 2007
Tom Ford
DISTRICT ENGINEER OF LOCAL ROADS AND STREETS

RELEASING FOR BID BASED ON LIMITED REVIEW
Christine M. Reed April 13, 2007
DEPUTY DIRECTOR OF HIGHWAYS
REGION FOUR ENGINEER

STATE OF ILLINOIS
DEPARTMENT OF TRANSPORTATION

CONTRACT NO. 93441

ADAMS COUNTY SECTION 06-00198-00-RS ROUTE FAS 584

COUNTY	ROUTE	SECTION	TOTAL SHEETS	SHEET NO.
ADAMS	FAS 584	06-00198-00-RS	7	2
SUMMARY OF QUANTITIES - GENERAL NOTES				
PROJECT NO. RS-584(109)				

GENERAL NOTES

1. WHERE SECTION OR SUB-SECTION STONES, USGS BENCH MARK MONUMENTS, AND U.S. ARMY CORPS OF ENGINEERS SURVEY MARKERS ARE ENCOUNTERED, THE ENGINEER SHALL BE NOTIFIED BEFORE SUCH STONES AND MONUMENTS ARE REMOVED. THE CONTRACTOR SHALL PROTECT AND CAREFULLY PRESERVE ALL PROPERTY MARKS UNTIL AN OWNER, AN AUTHORIZED SURVEYOR OR THEIR REPRESENTATIVE HAS WITNESSED OR OTHERWISE REFERENCED THE PROPERTY MARKS LOCATION.
2. ALL PRIVATELY OWNED UTILITIES, UNLESS OTHERWISE SPECIFIED, WILL BE MOVED BY THEIR RESPECTIVE OWNERS WHERE REQUIRED. THE FOLLOWING UTILITY COMPANIES HAVE FACILITIES WITHIN THE LIMITS OF CONSTRUCTION:
 - ADAMS TELEPHONE
 - ADAMS RURAL ELECTRICAL CO-OP
 - ABS WATER DISTRICT
 - CLAYTON - CAMP POINT WATER DISTRICT
 - WPCO
3. THE NOMINAL THICKNESS FOR THE LEVELING BINDER, SURFACE COURSES AND AGGREGATE SHOULDERS ARE SHOWN ON THE TYPICAL SECTIONS, STANDARDS, SCHEDULES OR SPECIAL DETAILS. THE CONSTRUCTED THICKNESS OF THE ABOVE ITEMS SHALL NOT BE LESS THAN 90% OF THE NOMINAL THICKNESS AT ANY LOCATION. THE THICKNESS OF THE HOT-MIX ASPHALT MIXTURE SHOWN ON THE PLANS IS THE NOMINAL THICKNESS. DEVIATIONS FROM THE NOMINAL THICKNESS WILL BE PERMITTED WHEN SUCH DEVIATIONS OCCUR DUE TO IRREGULARITIES IN THE EXISTING SURFACE OR BASE WHICH THE HOT-MIX ASPHALT MIXTURE IS PLACED.
4. THE CONTRACTOR SHALL BE RESPONSIBLE FOR DETERMINING THE LOCATION AND ELEVATION OF ALL EXISTING UTILITIES AND TO NOTIFY ALL UTILITY COMPANIES PRIOR TO THE BEGINNING OF CONSTRUCTION. THIS WILL BE CONSIDERED INCIDENTAL TO THE CONTRACT.
5. APPLICATION RATES SHALL BE AS FOLLOWS UNLESS OTHERWISE SPECIFIED BY THE ENGINEER:
 - HOT-MIX ASPHALT MIXTURES
112 LBS PER SQUARE YARD
 - BITUMINOUS MATERIALS (PRIME COAT)
0.05-0.10 GALLON PER SQUARE YARD ON PCC OR BITUMINOUS CONCRETE
0.25-0.35 GALLON PER SQUARE YARD ON AGGREGATE
 - AGGREGATE (PRIME COAT)
4 LBS PER SQUARE YARD
6. PERMANENT & TEMPORARY PAVEMENT MARKING TO BE DONE BY OTHERS. SHORT TERM PAVEMENT MARKING IS INCLUDED IN THE CONTRACT. THE REMOVAL OF THE SHORT TERM PAVEMENT MARKING TAPE WILL BE DONE BY OTHERS UPON COMPLETION OF THE PERMANENT PAVEMENT MARKING.

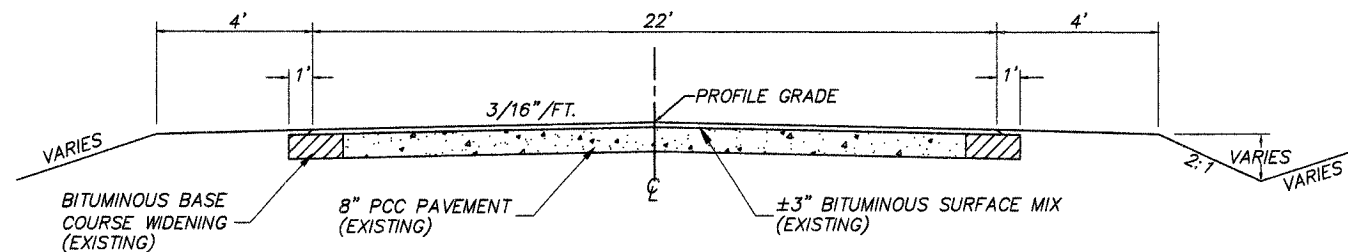
SUMMARY OF QUANTITIES

QUANTITY	UNIT	ITEM	CODE NO.	SPECIAL PROVISIONS
1,429	GALLON	BITUMINOUS MATERIALS (PRIME COAT)	40600100	*
29	TON	AGGREGATE (PRIME COAT)	40600300	*
217	TON	LEVELING BINDER (MACHINE METHOD), N50	40600625	*
1	EACH	CONSTRUCTING TEST STRIP	40600895	*
61	SQ. YD.	HOT-MIX ASPHALT SURFACE REMOVAL - BUTT JOINT	40600982	*
12	SQ. YD.	TEMPORARY RAMP	40600990	*
99	TON	HOT-MIX ASPHALT SURFACE COURSE, MIX "C", N50	40603310	*
1,652	TON	POLYMERIZED HOT-MIX ASPHALT SURFACE COURSE, MIX "C", N50	40603510	*
1	L. SUM	MOBILIZATION	67100100	*
1	L. SUM	TRAFFIC CONTROL AND PROTECTION	70101700	*
556	FOOT	SHORT TERM PAVEMENT MARKING	70300100	*

CONSTRUCTION TYPE CODE: I000

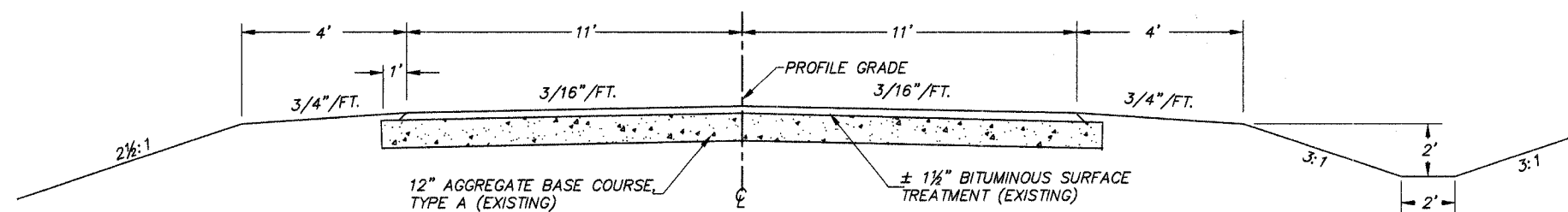
COUNTY	ROUTE	SECTION	TOTAL SHEETS	SHEET NO.
ADAMS	FAS 584	06-00198-00-RS	7	3

TYPICAL CROSS SECTIONS
PROJECT NO. RS-584(109)



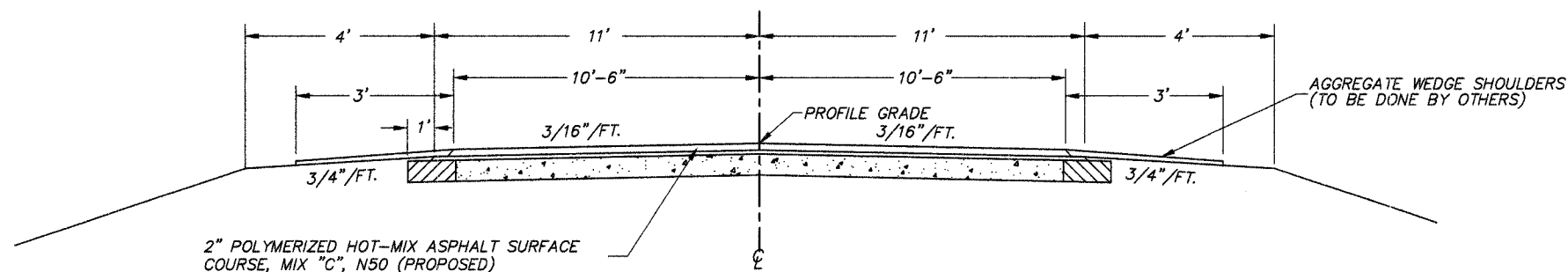
EXISTING CROSS SECTION

STA. 46+00 TO STA. 83+40
STA. 96+04 TO STA. 107+25



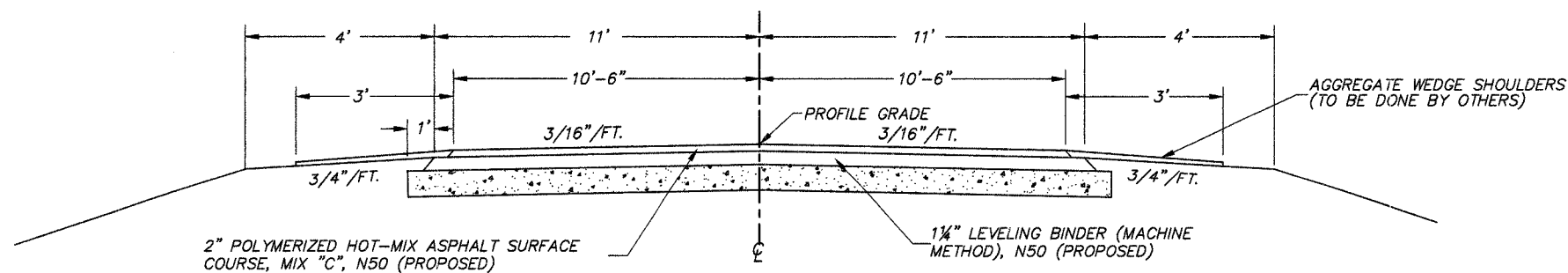
EXISTING CROSS SECTION

BUILT AS: 02-00000-00-GM
STA. 83+40 TO STA. 96+04



PROPOSED CROSS SECTION

STA. 46+00 TO STA. 83+40
STA. 96+04 TO STA. 107+25



PROPOSED CROSS SECTION

STA. 83+40 TO STA. 96+04

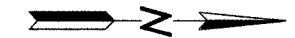
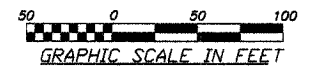
HOT-MIX ASPHALT MIXTURE REQUIREMENTS

ITEM	ASPHALT GRADE	AGG. COMPOSITION	VOIDS
POLY. SURFACE	SBS PG 64-28	IL-9.5 or 12.5 MIX C	4.0% @ N50
SURFACE	PG 58-22	IL-9.5 or 12.5 MIX C	4.0% @ N50
LEVELING BINDER	PG 58-22	IL-9.5	4.0% @ N50

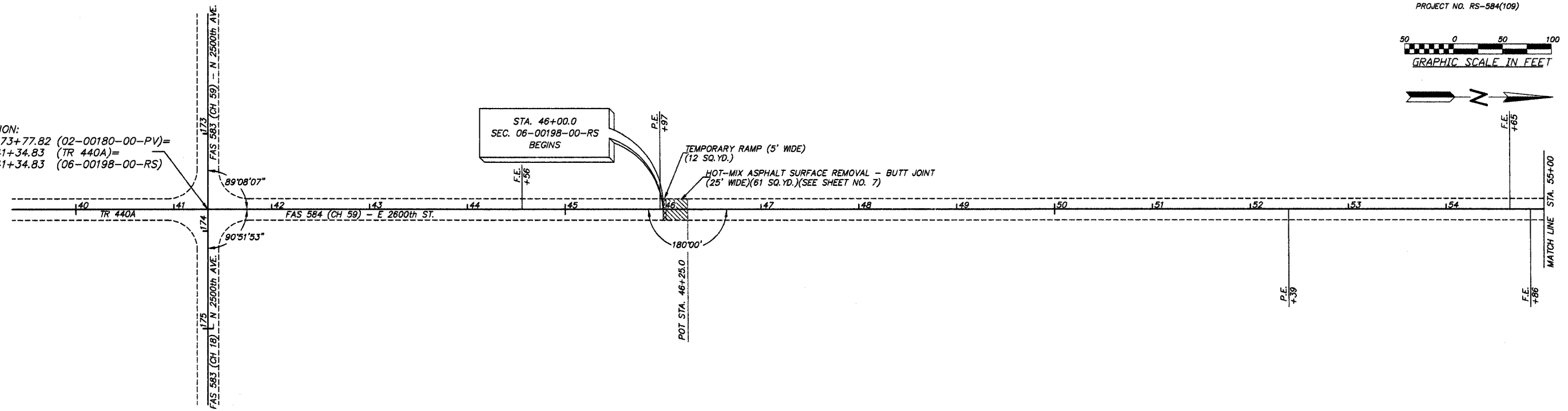
COUNTY	ROUTE	SECTION	TOTAL SHEETS	SHEET NO.
ADAMS	FAS 584	06-00198-00-RS	7	4

STATION 46+25 TO STATION 70+00

PROJECT NO. RS-584(109)

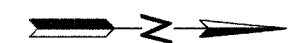
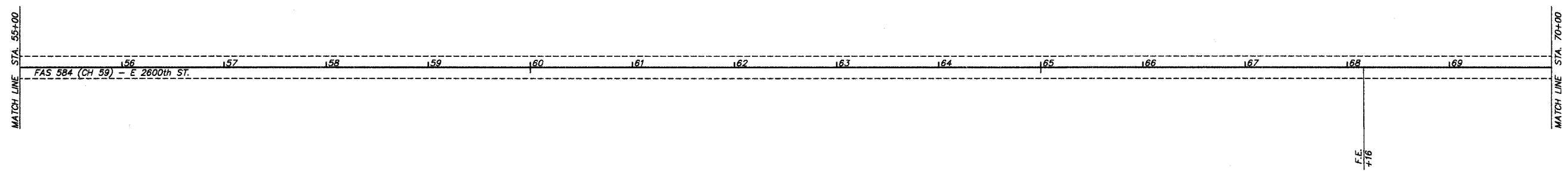


EQUATION:
 STA. 173+77.82 (02-00180-00-PV)=
 STA. 41+34.83 (TR 440A)=
 STA. 41+34.83 (06-00198-00-RS)



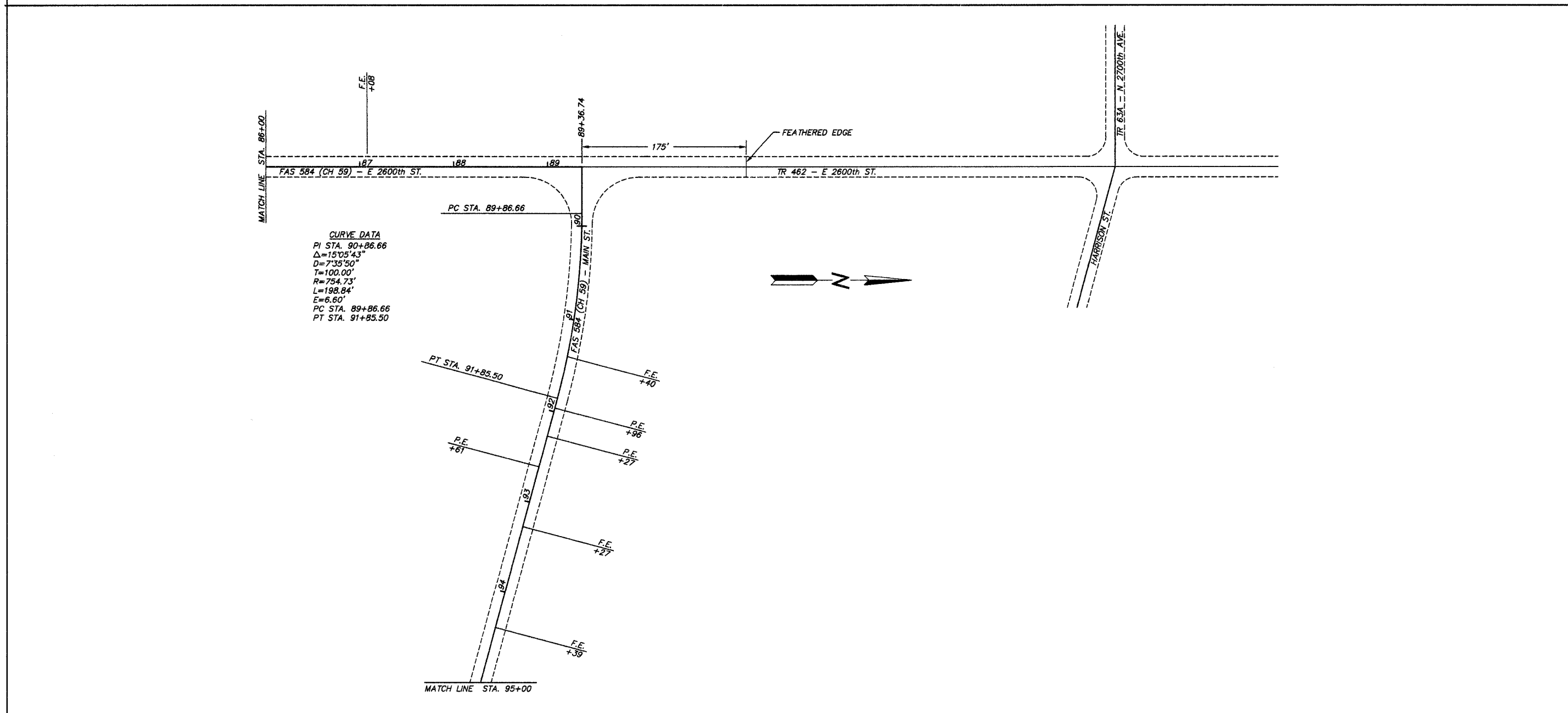
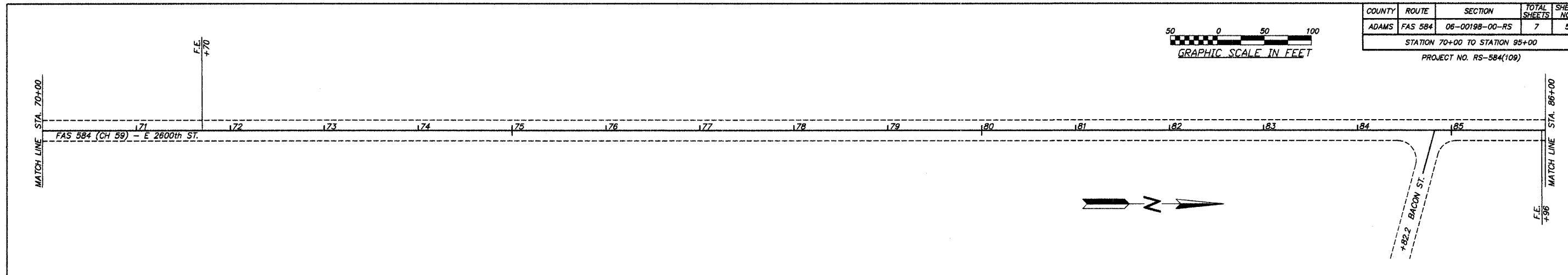
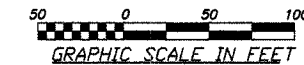
STA. 46+00.0
 SEC. 06-00198-00-RS
 BEGINS

TEMPORARY RAMP (5' WIDE)
 (12 SQ. YD.)
 HOT-MIX ASPHALT SURFACE REMOVAL - BUTT JOINT
 (25' WIDE)(61 SQ. YD.)(SEE SHEET NO. 7)



COUNTY	ROUTE	SECTION	TOTAL SHEETS	SHEET NO.
ADAMS	FAS 584	06-0019B-00-RS	7	5

STATION 70+00 TO STATION 95+00
PROJECT NO. RS-584(109)

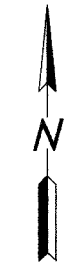
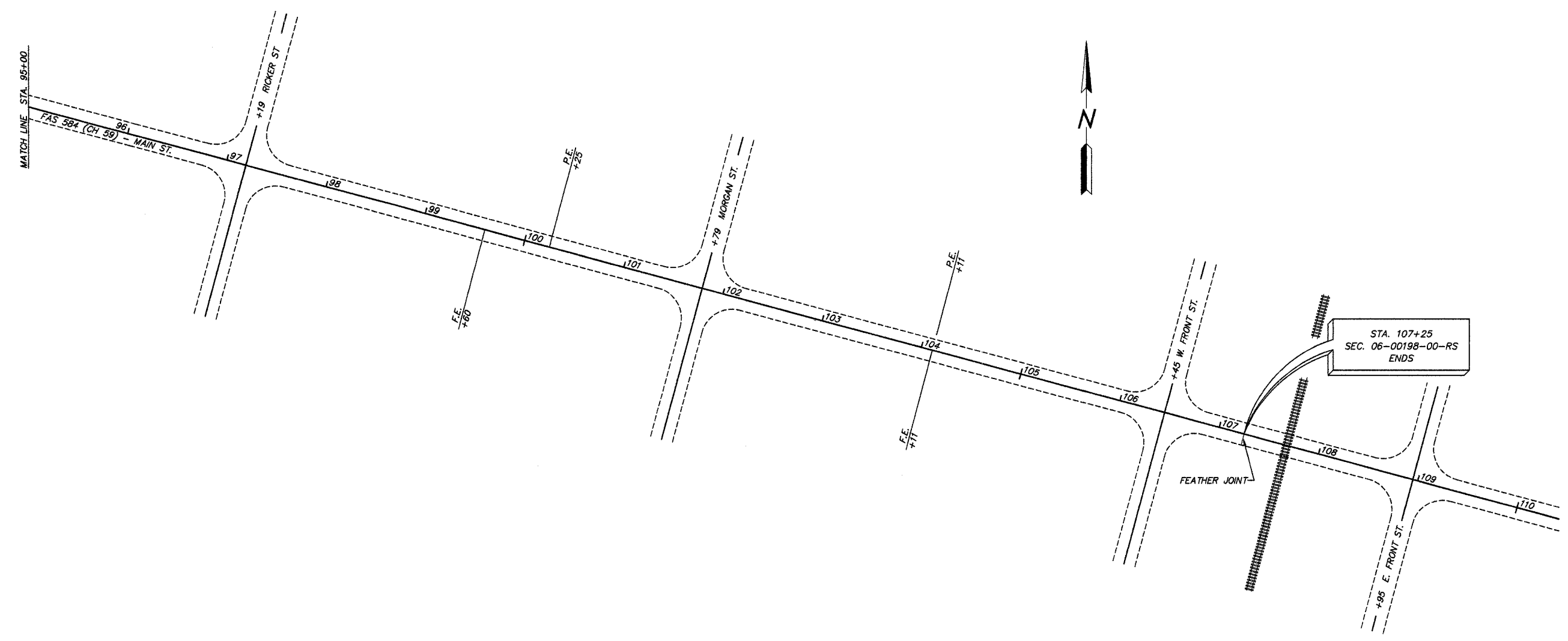
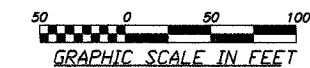


93441

COUNTY	ROUTE	SECTION	TOTAL SHEETS	SHEET NO.
ADAMS	FAS 584	06-00198-00-RS	7	6

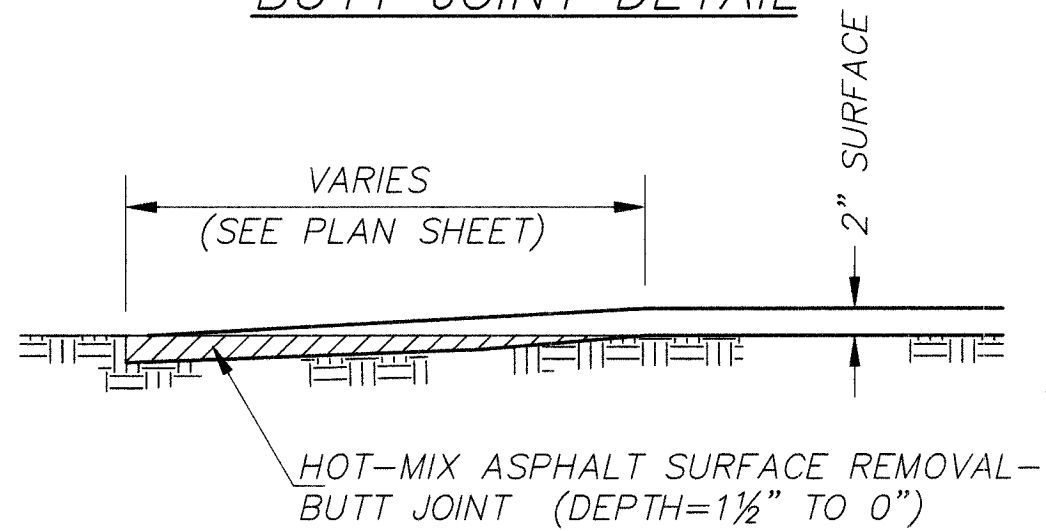
STATION 95+00 TO STATION 108+95

PROJECT NO. RS-584(109)

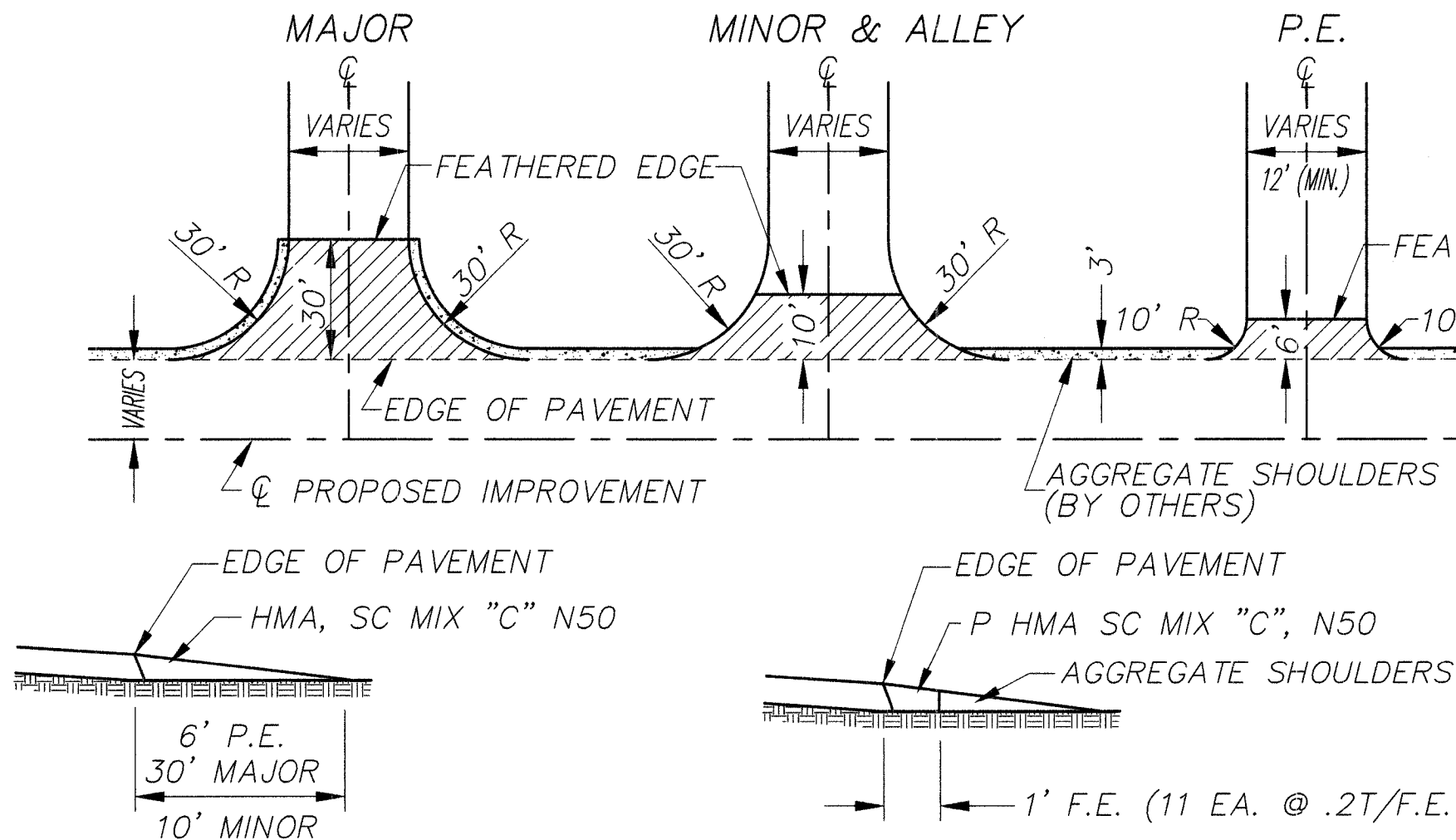


COUNTY	ROUTE	SECTION	TOTAL SHEETS	SHEET NO.
ADAMS	FAS 584	06-00198-00-RS	7	7
BUTT JOINT DETAIL				
SIDE ROAD & ENTRANCE DETAILS				
PROJECT NO. RS-584(109)				

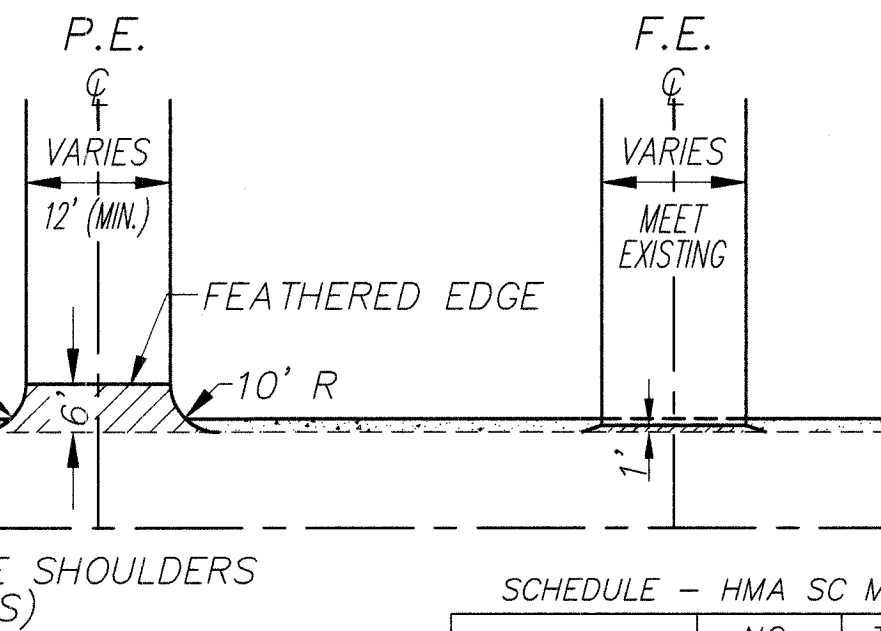
BUTT JOINT DETAIL



INTERSECTION DETAILS



ENTRANCE DETAILS



SCHEDULE - HMA SC MIX "C" N50

	NO.	TONS/	TONS
PE	6	2	12
CE	0	9	0
MINOR ROAD	8	9	72
MAJOR ROAD	0	15	0
MAILBOXES	5	3	15
TOTAL			99

