

STATE OF ILLINOIS
DEPARTMENT OF TRANSPORTATION
DIVISION OF HIGHWAYS

PLANS FOR PROPOSED FEDERAL HIGHWAY PROJECT

F.A.P. RTE.	SECTION	COUNTY	TOTAL SHEETS	SHEET NO.
95	•	EFFINGHAM	409	1

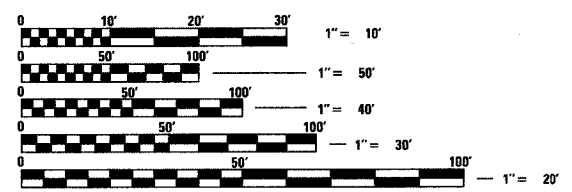
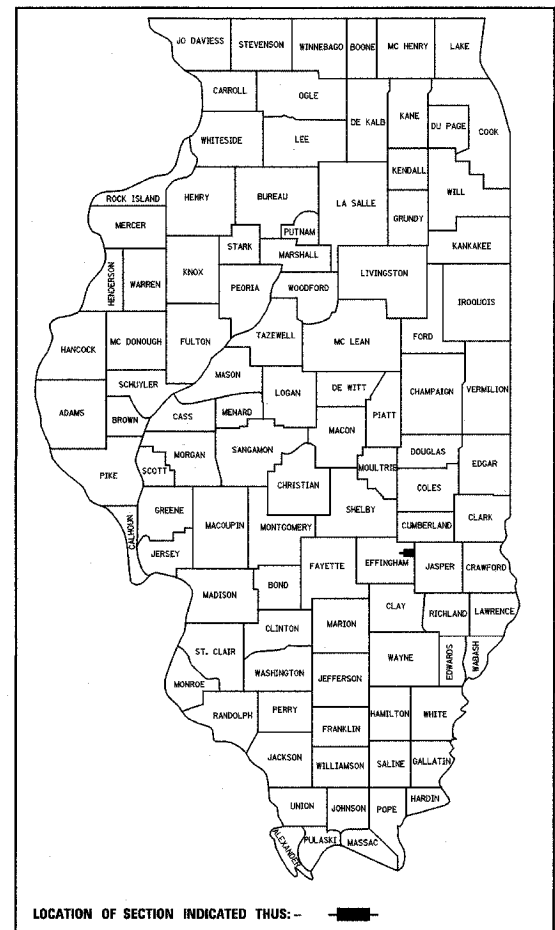
FED. ROAD DIST. NO. 7 ILLINOIS FED. AID PROJECT
• (6,7)Y, RS-1, 6B-1, 7B-1 & 7BR-2 409 + 21 = 430
CONTRACT NO. 94356

FOR INDEX OF SHEETS, SEE SHEET NO. 2
FOR SUMMARY OF QUANTITIES, SEE SHEET NOS. 4-7

WHERE REFERENCE IS MADE TO BITUMINOUS CONCRETE MATERIALS, HOT-MIX-ASPHALT PAY ITEMS SHALL APPLY PER CURRENT STANDARD SPECIFICATIONS.

FAP ROUTE 95 (ILLINOIS ROUTE 33)
SECTION (6,7)Y, RS-1, 6B-1, 7B-1 & 7BR-2
PROJECT: F-BRF-0095 (052)
EFFINGHAM COUNTY
C-97-089-01

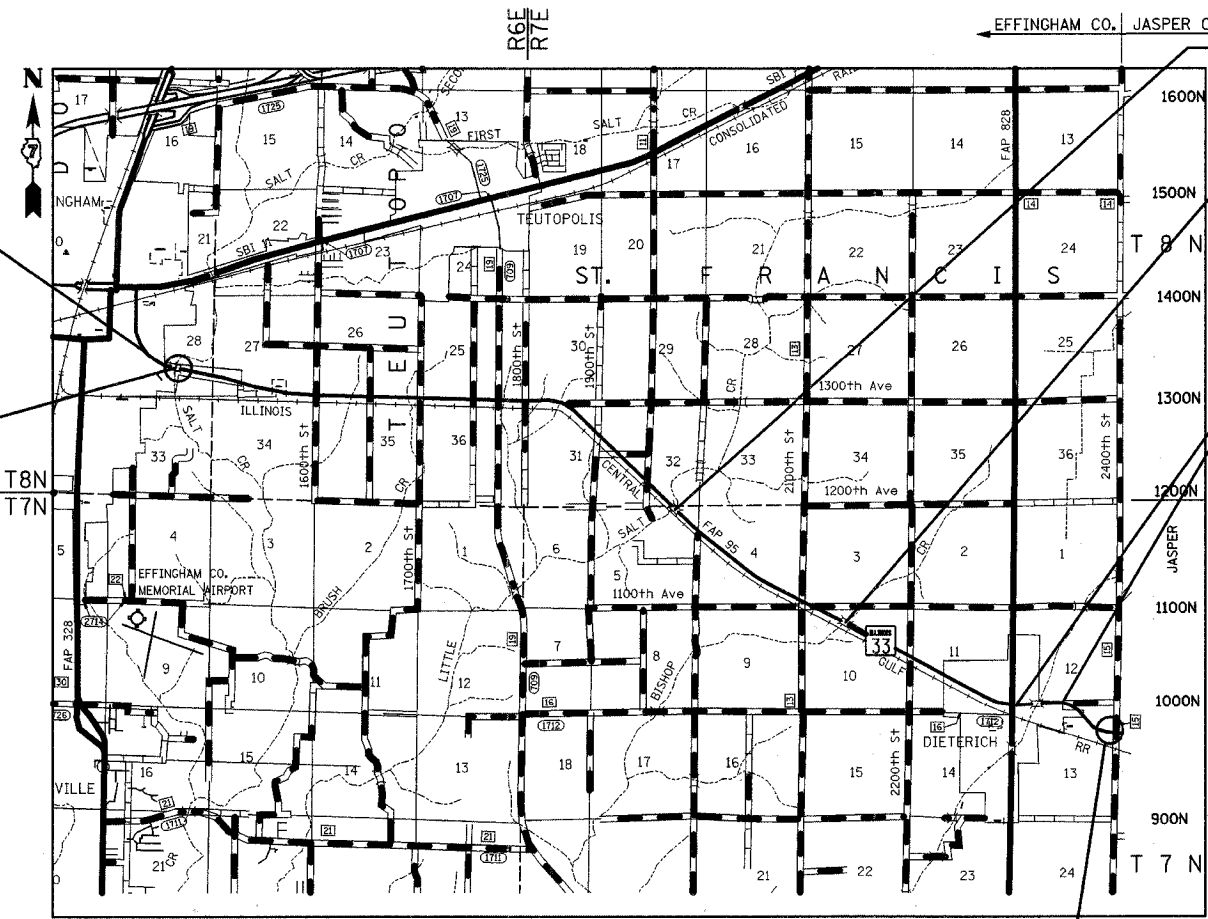
D-97-021-00



FOR UNDERGROUND UTILITY LOCATIONS CALL
J.U.L.I.E. TOLL FREE
1-800-892-0123

PROPOSED IMPROVEMENT BEGINS
STA. 142 + 00.00

BRIDGE SECTION 7B-1
NEW 3-SPAN STEEL
STRUCTURAL
BEGINS STA. 145 + 74.00
ENDS STA. 147 + 51.00



BRIDGE SECTION 7B-2
RESURFACING OF 3-SPAN
PPC I-BEAM STRUCTURAL
BEGINS STA. 422 + 94.33
ENDS STA. 424 + 45.67

BRIDGE SECTION 6B-1
NEW 1-SPAN PPC I-BEAM
STRUCTURAL
BEGINS STA. 531 + 53.00
ENDS STA. 532 + 07.00

OMISSION
BEGINS STA. 621 + 24.00
ENDS STA. 643 + 15.00

- STATION EQUATIONS**
- STA. 209 + 78.77 BK = STA. 209 + 67.66 AH
 - STA. 314 + 45.17 BK = STA. 314 + 13.07 AH
 - STA. 355 + 20.31 BK = STA. 357 + 15.38 AH
 - STA. 412 + 78.37 BK = STA. 412 + 74.63 AH
 - STA. 531 + 41.06 BK = STA. 531 + 33.78 AH
 - STA. 642 + 94.54 BK = STA. 643 + 00.00 AH
 - STA. 687 + 28.06 BK = STA. 687 + 73.01 AH

PROPOSED IMPROVEMENT ENDS
STA. 689 + 81.63

FULL SIZE PLANS HAVE BEEN PREPARED USING STANDARD ENGINEERING SCALES, REDUCED SIZED PLANS WILL NOT CONFORM TO STANDARD SCALES, IN MAKING MEASUREMENTS ON REDUCED PLANS, THE ABOVE SCALES MAY BE USED.

DESIGN DESIGNATION: N.A. - RESURFACING

CONTRACT NO. 94356

TOWNSHIP: DOUGLAS, TEUTOPOLIS, ST. FRANCIS & BISHOP

LOCATION MAP

GROSS LENGTH OF PROJECT = 54,590 FT. = 10.34 MILES
NET LENGTH OF PROJECT = 52,405 FT. = 9.93 MILES ADT = 6100 (2001)

STATE OF ILLINOIS
CHARLES E. OUTHOUSE, JR.
062-050644
PROFESSIONAL ENGINEER
DATE: 3/12/07
EXPIRES: 11/30/2007

STATE OF ILLINOIS
DEPARTMENT OF TRANSPORTATION
DIVISION OF HIGHWAYS

SUBMITTED March 26, 2007
Chas. H. Red
DEPUTY DIRECTOR OF HIGHWAYS, REGIONAL ENGINEER

ENGINEER OF PROJECT DEVELOPMENT AND IMPLEMENTATION
May 11, 2007
Eric E. Harrel
INTERIM ENGINEER OF DESIGN AND ENVIRONMENT

May 11, 2007
Milton R. Seer, P.E.
DIRECTOR, DIVISION OF HIGHWAYS

FHWA _____ 20 _____
DIVISION ADMINISTRATOR

**PRINTED BY AUTHORITY
OF THE STATE OF ILLINOIS**

PROJECT ENGINEER: BILL STANLEY
SQUAD LEADER: JENNIFER WENTHE
TELEPHONE: 217-342-3951 EXT. 361