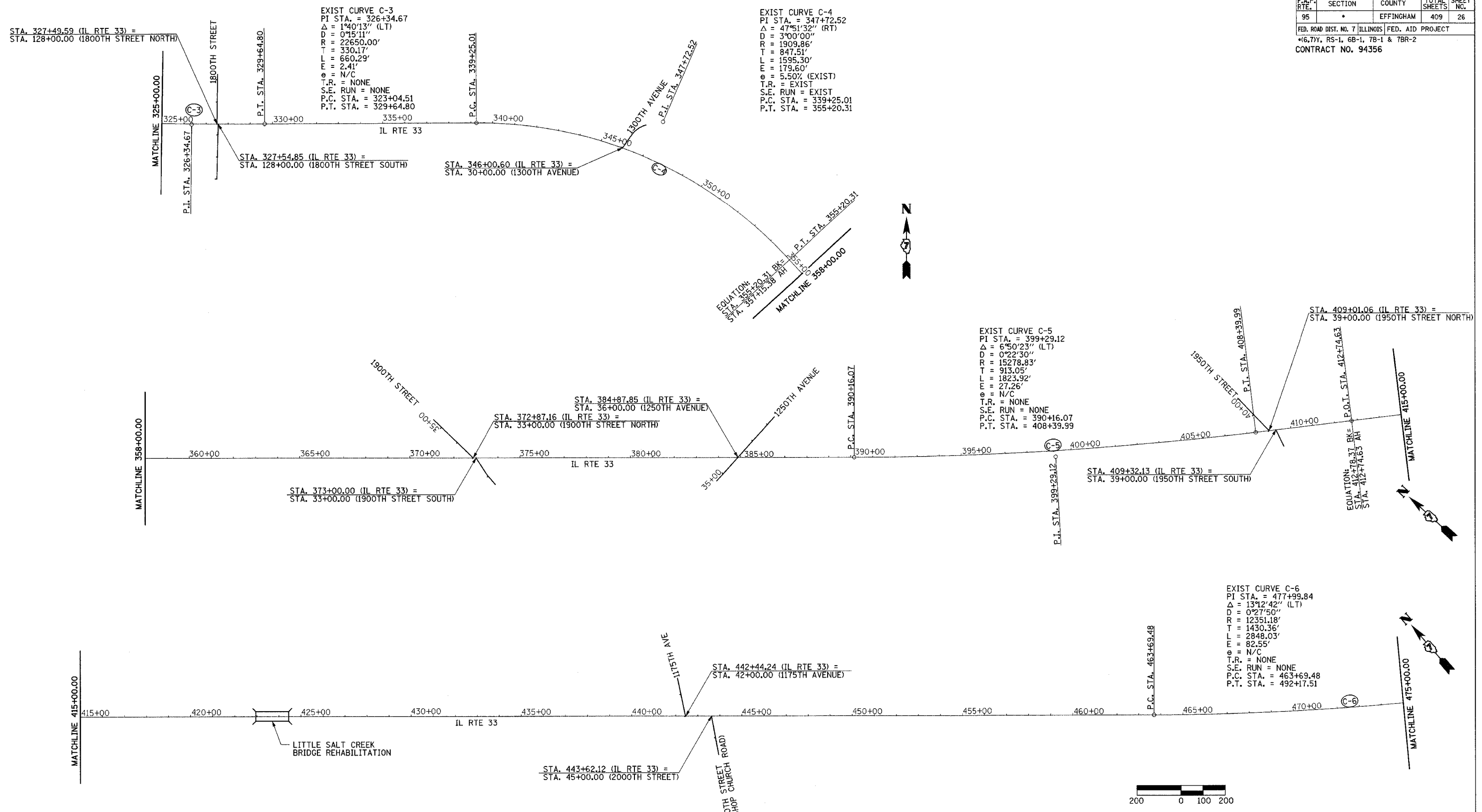


F.A.P. RTE.	SECTION	COUNTY	TOTAL SHEETS	SHEET NO.
95	*	EFFINGHAM	409	26
FED. ROAD DIST. NO. 7 ILLINOIS FED. AID PROJECT				
*(6,7)Y, RS-1, 6B-1, 7B-1 & 7BR-2				
CONTRACT NO. 94356				

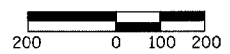


EXIST CURVE C-3  
 PI STA. = 326+34.67  
 $\Delta = 1^\circ 40' 13''$  (LT)  
 $D = 0^\circ 15' 11''$   
 $R = 22650.00'$   
 $T = 330.17'$   
 $L = 660.29'$   
 $E = 2.41'$   
 $\theta = N/C$   
 T.R. = NONE  
 S.E. RUN = NONE  
 P.C. STA. = 323+04.51  
 P.T. STA. = 329+64.80

EXIST CURVE C-4  
 PI STA. = 347+72.52  
 $\Delta = 47^\circ 51' 32''$  (RT)  
 $D = 3^\circ 00' 00''$   
 $R = 1909.86'$   
 $T = 847.51'$   
 $L = 1595.30'$   
 $E = 179.60'$   
 $\theta = 5.50\%$  (EXIST)  
 T.R. = EXIST  
 S.E. RUN = EXIST  
 P.C. STA. = 339+25.01  
 P.T. STA. = 355+20.31

EXIST CURVE C-5  
 PI STA. = 399+29.12  
 $\Delta = 6^\circ 50' 23''$  (LT)  
 $D = 0^\circ 22' 30''$   
 $R = 15278.83'$   
 $T = 913.05'$   
 $L = 1823.92'$   
 $E = 27.26'$   
 $\theta = N/C$   
 T.R. = NONE  
 S.E. RUN = NONE  
 P.C. STA. = 390+16.07  
 P.T. STA. = 408+39.99

EXIST CURVE C-6  
 PI STA. = 477+99.84  
 $\Delta = 13^\circ 12' 42''$  (LT)  
 $D = 0^\circ 27' 50''$   
 $R = 12351.18'$   
 $T = 1430.36'$   
 $L = 2848.03'$   
 $E = 82.55'$   
 $\theta = N/C$   
 T.R. = NONE  
 S.E. RUN = NONE  
 P.C. STA. = 463+69.48  
 P.T. STA. = 492+17.51



REVISIONS	
NAME	DATE

ILLINOIS DEPARTMENT OF TRANSPORTATION  
**HORIZONTAL ALIGNMENT PLAN AND BENCHMARKS**  
 SHEET 2 OF 4  
 SCALE: 1"=200'  
 DATE 11/14/01  
 DRAWN BY TLS  
 CHECKED BY RMD