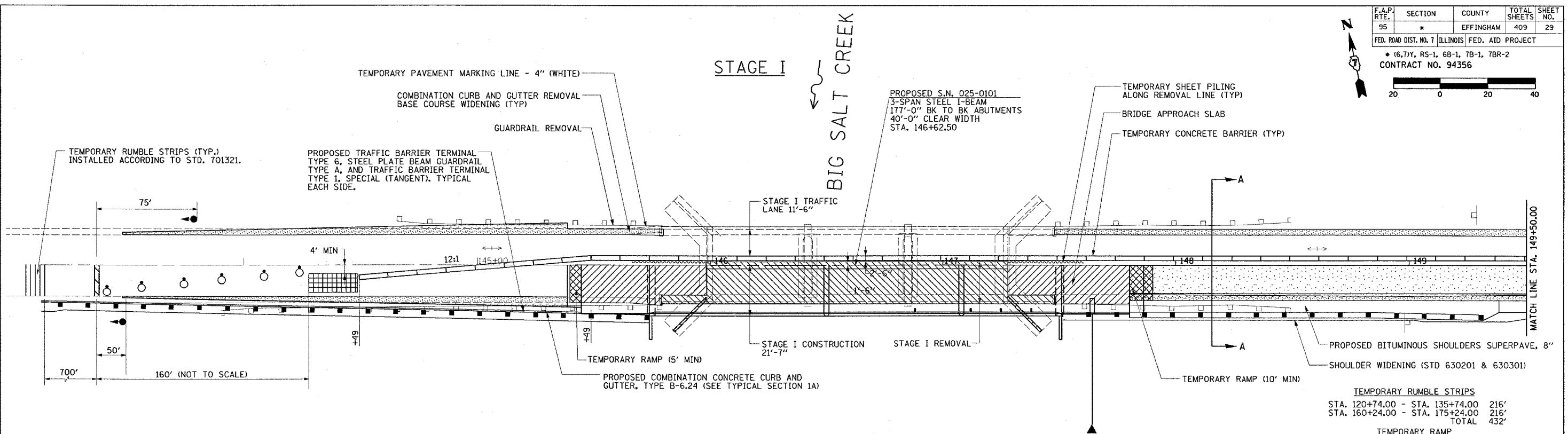
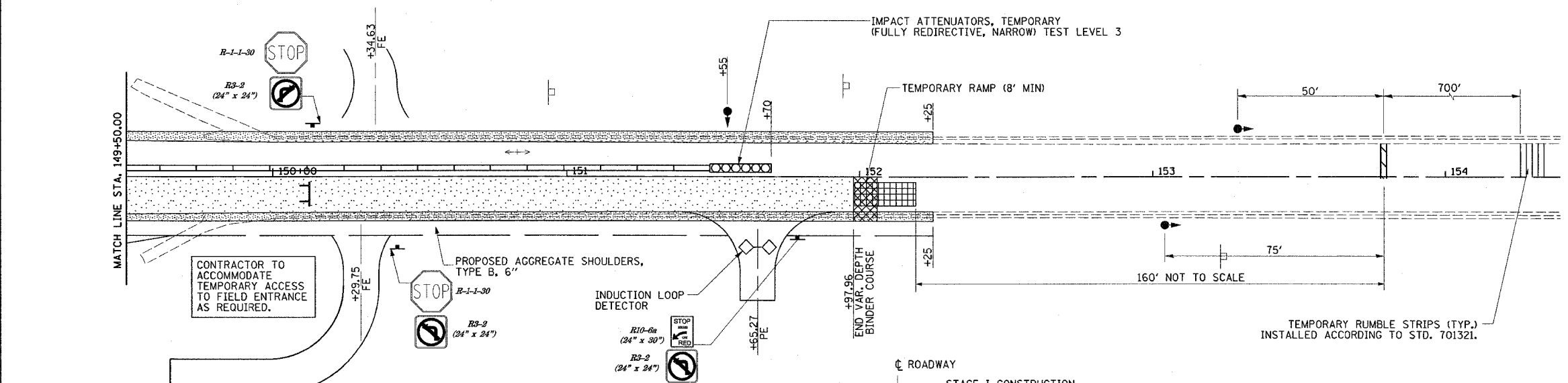


| F.A.P. RTE. | SECTION | COUNTY | TOTAL SHEETS | SHEET NO. |
|---|---------|-----------|--------------|-----------|
| 95 | | EFFINGHAM | 409 | 29 |
| FED. ROAD DIST. NO. 7 ILLINOIS FED. AID PROJECT | | | | |

* (6.7)Y, RS-1, 6B-1, 7B-1, 7BR-2
CONTRACT NO. 94356



| TEMPORARY RUMBLE STRIPS | | |
|---|-----------------|--|
| STA. 120+74.00 - STA. 135+74.00 | 216' | |
| STA. 160+24.00 - STA. 175+24.00 | 216' | |
| TOTAL | 432' | |
| TEMPORARY RAMP | | |
| STA. 145+39.00 - STA. 145+44.00 | 8 SQ YD | |
| STA. 147+81.00 - STA. 147+91.00 | 16 SQ YD | |
| STA. 151+97.96 - STA. 152+05.96 | 13 SQ YD | |
| TOTAL | 37 SQ YD | |
| IMPACT ATTENUATORS, TEMPORARY (FULLY REDIRECTIVE, NARROW) TEST LEVEL 3 BIG SALT CREEK | | |
| | 1 EACH | |
| TEMPORARY CONCRETE BARRIER | | |
| STA. 144+49.00 - STA. 151+49.00 | 700' | |

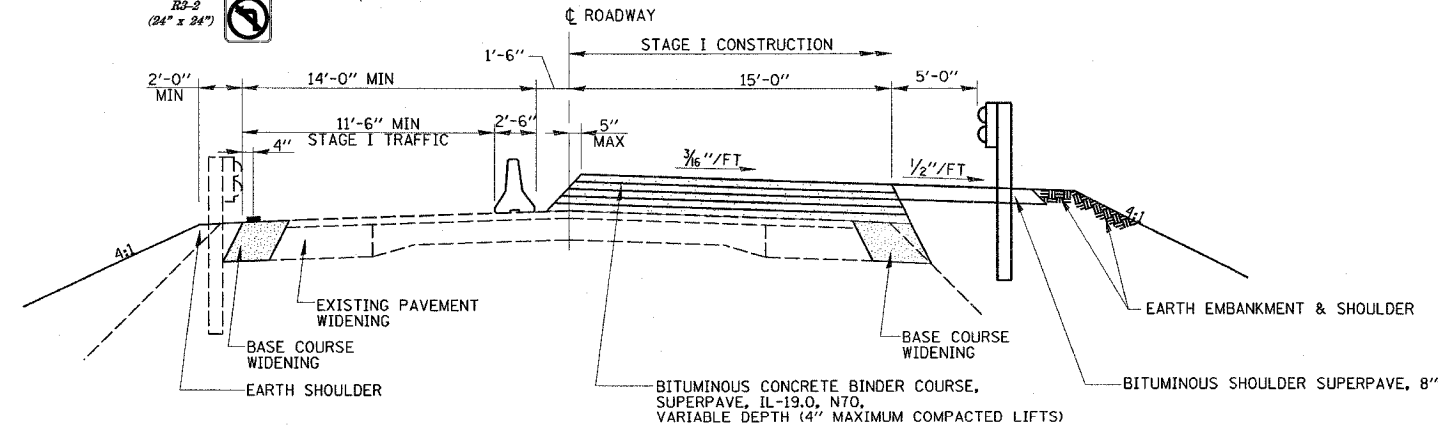


- SUGGESTED SEQUENCE OF OPERATIONS**
1. CONSTRUCT BASE COURSE WIDENING, LEFT SIDE
 2. ERECT SIGNS, TRAFFIC SIGNALS, TEMPORARY BARRIERS, ETC. ACCORDING TO THE TRAFFIC CONTROL STANDARD 701321. INSTALL TRAFFIC CONTROL FOR PRIVATE ENTRANCE AS SHOWN.
 3. INSTALL TEMPORARY SHEET PILING. REMOVE THE STAGE I PORTION OF THE EXISTING STRUCTURE, PAVEMENT AND GUARDRAIL.
 4. CONSTRUCT EMBANKMENT AND RAISE ROAD PER CROSS SECTIONS.
 5. CONSTRUCT THE STAGE I PORTION OF THE NEW BRIDGE, APPROACH PAVEMENT, TEMPORARY RAMPS AND GUARDRAIL.

- NOTES:**
1. FOR ADDITIONAL DETAILS ON LANE CLOSURES WITH BARRIERS, SEE STANDARD 701321 AND SPECIAL PROVISION FOR TRAFFIC CONTROL AND PROTECTION, STANDARD 701321 (SPECIAL).
 2. SEE BRIDGE PLANS FOR ADDITIONAL INFORMATION ON STAGE CONSTRUCTION.
 3. UNLESS NOTED, BASE COURSE WIDENING TO REMAIN IN PLACE AFTER BRIDGE CONSTRUCTION IS COMPLETE.
 4. PROVIDE CONTINUOUS ACCESS TO PRIVATE ENTRANCE AT STA. 151+65.27.
 5. FINAL SURFACE COURSE TO BE APPLIED UNDER TRAFFIC.

LEGEND

| | |
|--|---|
| | PAVEMENT REMOVAL |
| | BITUMINOUS BINDER COURSE |
| | BASE COURSE WIDENING |
| | TEMPORARY RAMP |
| | TEMPORARY CONCRETE BARRIER |
| | STRUCTURE REMOVAL |
| | IMPACT ATTENUATOR |
| | TYPE III BARRICADE WITH ROAD CLOSED SIGN (R11-2) |
| | TRAFFIC SIGNALS |
| | BARRICADE OR DRUM WITH MONODIRECTIONAL STEADY BURNING LIGHT |
| | STOP BAR |



SECTION A-A

| REVISIONS | |
|-----------|------|
| NAME | DATE |
| | |
| | |
| | |
| | |
| | |
| | |
| | |
| | |
| | |

ILLINOIS DEPARTMENT OF TRANSPORTATION
STAGE I CONSTRUCTION
IL RTE 33 OVER BIG SALT CREEK
STRUCTURE NO. 025-0101
STA. 146+62.50

DATE 8/03
REVISED 03/22/07

DRAWN BY MLO
CHECKED BY PBB