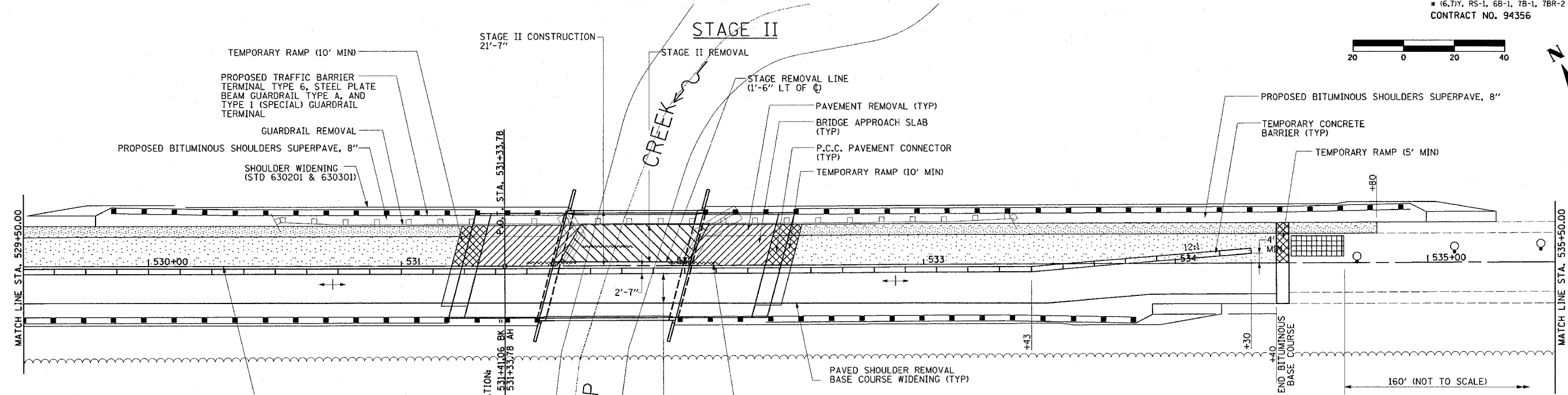
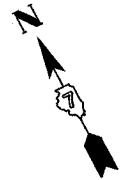


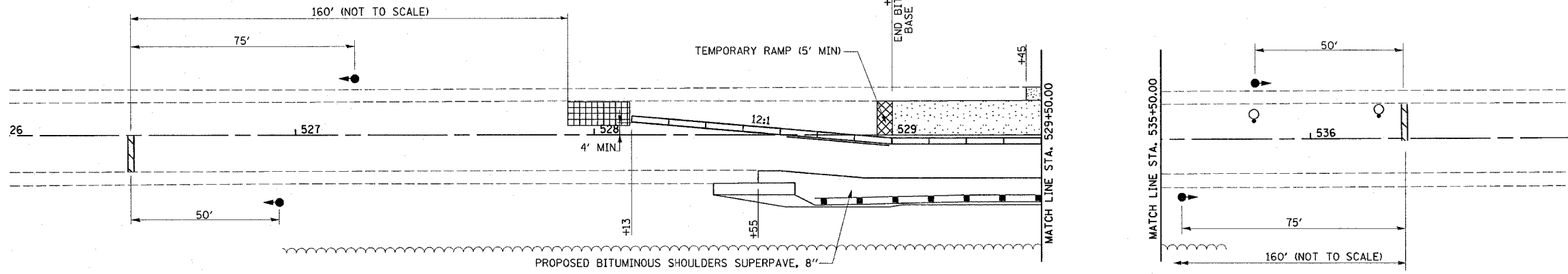
F.A.P. RTE.	SECTION	COUNTY	TOTAL SHEETS	SHEET NO.
95	*	EFFINGHAM	409	32
FED. ROAD DIST. NO. 7 ILLINOIS FED. AID PROJECT				
* (6.7)Y, RS-1, 6B-1, 7B-1, 7BR-2				
CONTRACT NO. 94356				



TEMPORARY RAMP

STA. 531+20.28 - STA. 531+30.28	17 SQ YD
STA. 532+37.00 - STA. 532+47.00	17 SQ YD
STA. 528+95.00 - STA. 529+00.00	9 SQ YD
TOTAL	43 SQ YD

RELOCATE TEMPORARY CONCRETE BARRIER
STA. 528+12.00 - STA. 534+30.00 625'

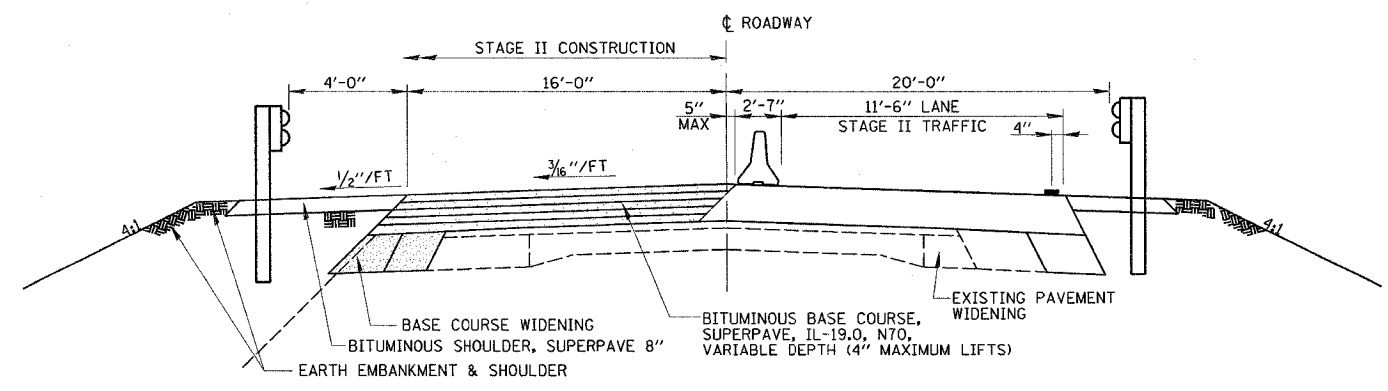


- NOTES:
- FOR ADDITIONAL DETAILS ON LANE CLOSURES WITH BARRIERS, SEE STANDARD 701321 AND SPECIAL PROVISION FOR TRAFFIC CONTROL AND PROTECTION STANDARD 701321 (SPECIAL).
 - SEE BRIDGE PLANS FOR ADDITIONAL INFORMATION ON STAGE CONSTRUCTION.
 - UNLESS NOTED, BASE COURSE WIDENING TO REMAIN IN PLACE AFTER BRIDGE CONSTRUCTION IS COMPLETE.
 - FINAL SURFACE COURSE TO BE APPLIED UNDER TRAFFIC.

- SUGGESTED SEQUENCE OF OPERATIONS
- RELOCATE SIGNS, TRAFFIC SIGNALS, TEMPORARY BARRIERS, ETC. ACCORDING TO THE TRAFFIC CONTROL STANDARD 701321.
 - REMOVE THE STAGE II PORTION OF THE EXISTING STRUCTURE, PAVEMENT AND GUARDRAIL.
 - CONSTRUCT EMBANKMENT AND RAISE ROAD PER CROSS SECTIONS.
 - CONSTRUCT THE STAGE II PORTION OF THE NEW BRIDGE, PAVEMENT, APPROACH PAVEMENT, TEMPORARY RAMPS AND GUARDRAIL.
 - REMOVE ALL STAGE CONSTRUCTION TRAFFIC CONTROL ITEMS.

LEGEND

	PAVEMENT REMOVAL
	BITUMINOUS BINDER COURSE
	BASE COURSE WIDENING
	TEMPORARY RAMP
	TEMPORARY CONCRETE BARRIER
	STRUCTURE REMOVAL
	IMPACT ATTENUATOR
	TRAFFIC SIGNALS
	BARRICADE OR DRUM WITH MONODIRECTIONAL STEADY BURNING LIGHT
	STOP BAR



SECTION B-B

REVISIONS	
NAME	DATE

ILLINOIS DEPARTMENT OF TRANSPORTATION

STAGE II CONSTRUCTION
IL RTE 33 OVER BISHOP CREEK
STRUCTURE NO. 025-0097
STA. 531+80.00

DATE 8/03
REVISED DATE 03/26/07

DRAWN BY MLO
CHECKED BY PBB