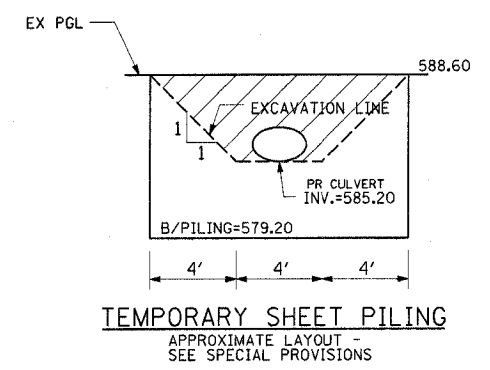
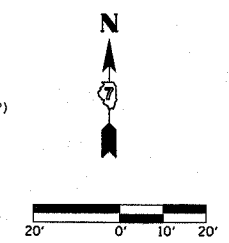
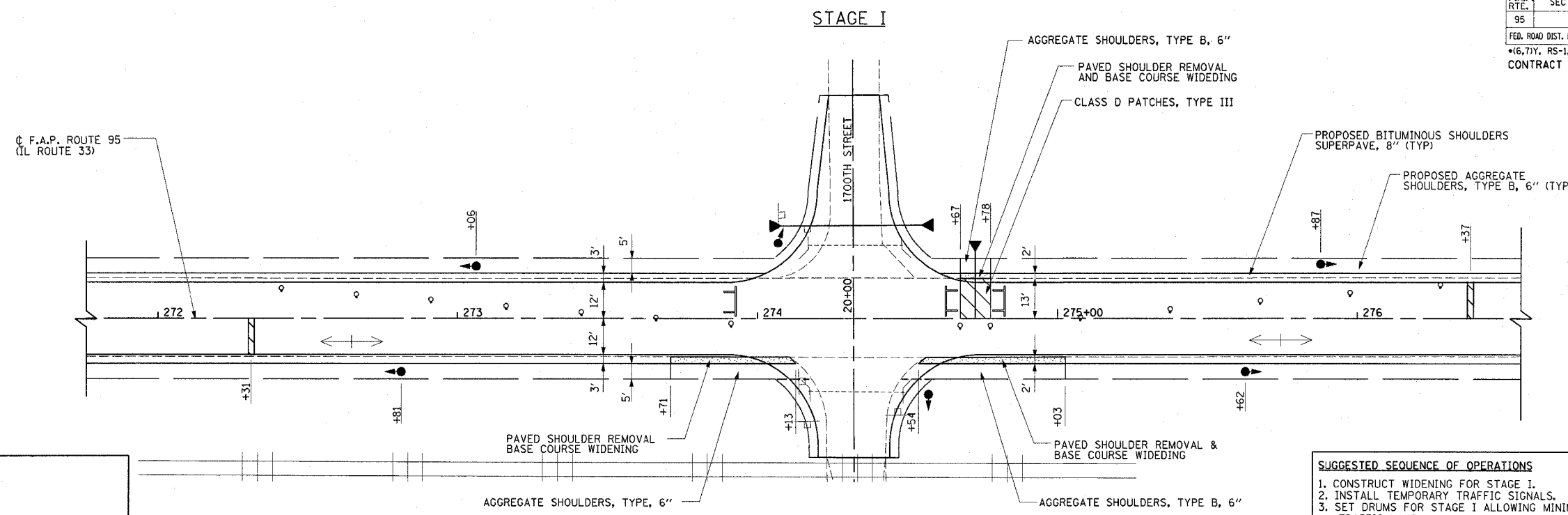
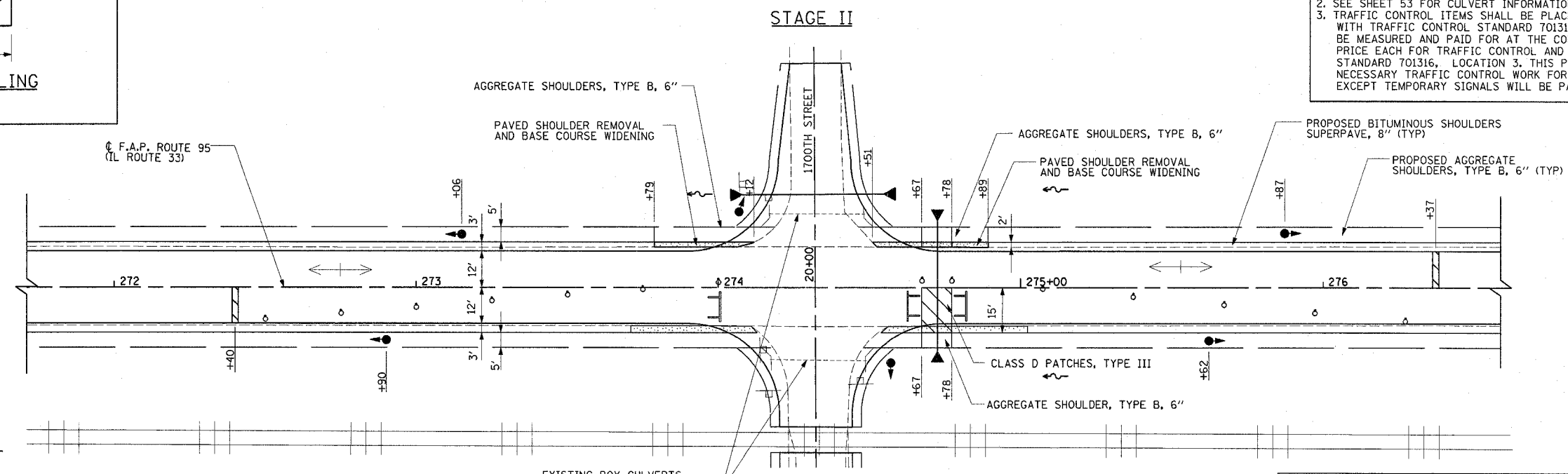


F.A.P. RTE.	SECTION	COUNTY	TOTAL SHEETS	SHEET NO.
95		EFFINGHAM	409	35
FED. ROAD DIST. NO. 7 ILLINOIS FED. AID PROJECT				
*(6,7)Y, RS-1, 6B-1, 7B-1 & 7BR-2				
CONTRACT NO. 94356				



- SUGGESTED SEQUENCE OF OPERATIONS**
1. CONSTRUCT WIDENING FOR STAGE I.
 2. INSTALL TEMPORARY TRAFFIC SIGNALS.
 3. SET DRUMS FOR STAGE I ALLOWING MINIMUM 12 FEET FOR TRAFFIC LANE.
 4. DRIVE SHEET PILING AT CENTERLINE OF IL RTE 33 FLUSH WITH THE EXISTING ROADWAY ELEVATION. CONSTRUCT NEW TEMPORARY PIPE CULVERT ON NORTH SIDE OF CENTERLINE. REMOVE WIDENING.
 5. CONSTRUCT WIDENING FOR STAGE II AND SWITCH TRAFFIC TO NORTH SIDE.
 6. CONSTRUCT REMAINDER OF NEW PIPE CULVERT.
- NOTES:**
1. FOR ADDITIONAL DETAILS ON LANE CLOSURE, SEE STANDARD 701316.
 2. SEE SHEET 53 FOR CULVERT INFORMATION.
 3. TRAFFIC CONTROL ITEMS SHALL BE PLACED IN ACCORDANCE WITH TRAFFIC CONTROL STANDARD 701316. THIS WORK WILL BE MEASURED AND PAID FOR AT THE CONTRACT UNIT PRICE EACH FOR TRAFFIC CONTROL AND PROTECTION STANDARD 701316, LOCATION 3. THIS PRICE SHALL INCLUDE ALL NECESSARY TRAFFIC CONTROL WORK FOR STAGE I AND STAGE II, EXCEPT TEMPORARY SIGNALS WILL BE PAID SEPARATELY.

TEMPORARY SHEET PILING
STA. 274+66.00 TO STA 274+78.00 113 SQ FT



- LEGEND**
- CLASS D PATCHES
 - PAVED SHOULDER REMOVAL AND BASE COURSE WIDENING
 - DRUM WITH MONODIRECTIONAL STEADY BURNING LIGHT
 - STOP BAR
 - TYPE III BARRICADE
 - TRAFFIC SIGNALS

EXISTING BOX CULVERTS TO REMAIN IN PLACE UNTIL PROPOSED PIPE CULVERT INSTALLATION IS COMPLETE

REVISIONS	
NAME	DATE

ILLINOIS DEPARTMENT OF TRANSPORTATION

STAGE CONSTRUCTION
NEW 24" EQUIVALENT
ELLIPTICAL RCP CULVERT
STA. 274+72.57

DATE 10/01

DRAWN BY BDM
CHECKED BY TGC