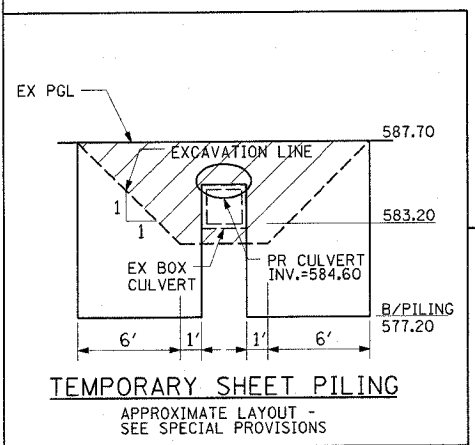
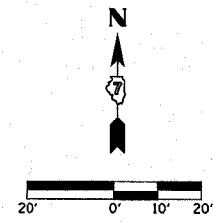
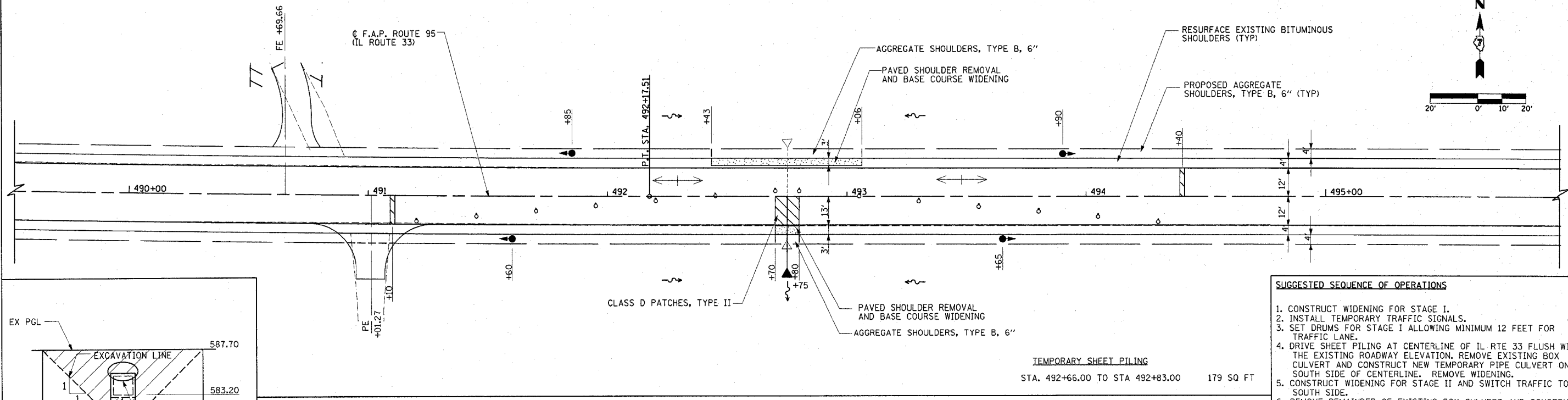


F.A.P. RTE.	SECTION	COUNTY	TOTAL SHEETS	SHEET NO.
95		EFFINGHAM	409	37
FED. ROAD DIST. NO. 7 ILLINOIS FED. AID PROJECT				
*6.7Y, RS-1, 6B-1, 7B-1 & 7BR-2				
CONTRACT NO. 94356				

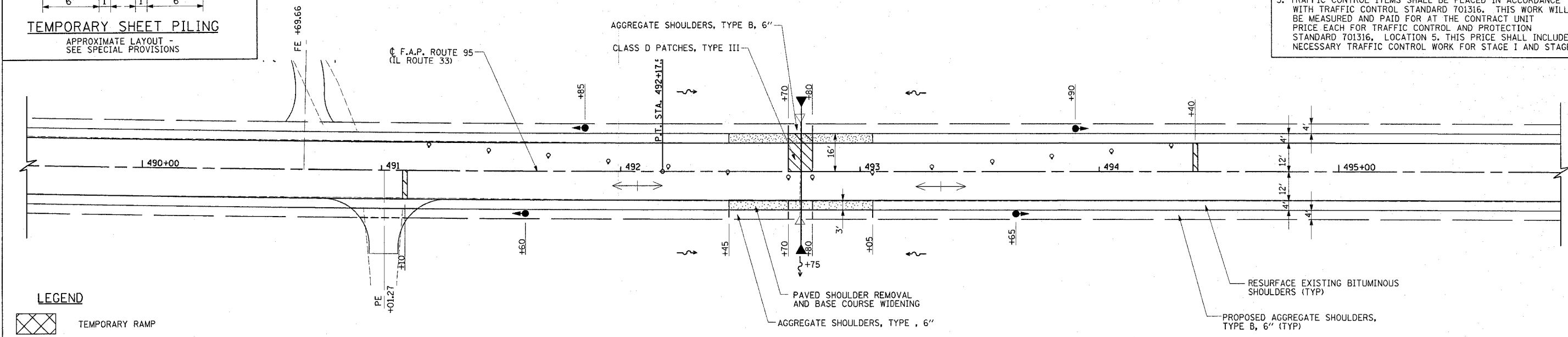
STAGE I



- SUGGESTED SEQUENCE OF OPERATIONS**
1. CONSTRUCT WIDENING FOR STAGE I.
 2. INSTALL TEMPORARY TRAFFIC SIGNALS.
 3. SET DRUMS FOR STAGE I ALLOWING MINIMUM 12 FEET FOR TRAFFIC LANE.
 4. DRIVE SHEET PILING AT CENTERLINE OF IL RTE 33 FLUSH WITH THE EXISTING ROADWAY ELEVATION. REMOVE EXISTING BOX CULVERT AND CONSTRUCT NEW TEMPORARY PIPE CULVERT ON SOUTH SIDE OF CENTERLINE. REMOVE WIDENING.
 5. CONSTRUCT WIDENING FOR STAGE II AND SWITCH TRAFFIC TO SOUTH SIDE.
 6. REMOVE REMAINDER OF EXISTING BOX CULVERT AND CONSTRUCT REMAINDER OF NEW PIPE CULVERT.
- NOTES:**
1. FOR ADDITIONAL DETAILS ON LANE CLOSURE, SEE STANDARD 701316.
 2. SEE SHEET 72 FOR CULVERT INFORMATION.
 3. TRAFFIC CONTROL ITEMS SHALL BE PLACED IN ACCORDANCE WITH TRAFFIC CONTROL STANDARD 701316. THIS WORK WILL BE MEASURED AND PAID FOR AT THE CONTRACT UNIT PRICE EACH FOR TRAFFIC CONTROL AND PROTECTION STANDARD 701316, LOCATION 5. THIS PRICE SHALL INCLUDE ALL NECESSARY TRAFFIC CONTROL WORK FOR STAGE I AND STAGE II.

TEMPORARY SHEET PILING
STA. 492+66.00 TO STA 492+83.00 179 SQ FT

STAGE II



- LEGEND**
- TEMPORARY RAMP
 - WORK AREA
 - BASE COURSE WIDENING
 - BARRICADE OR DRUM WITH MONODIRECTIONAL STEADY BURNING LIGHT
 - STOP BAR
 - TRAFFIC SIGNALS

REVISIONS	
NAME	DATE

ILLINOIS DEPARTMENT OF TRANSPORTATION

**STAGE CONSTRUCTION
NEW 24" ELLIPTICAL EQUIVALENT
RCP CULVERT
STA. 492+75.11**

DATE 10/01

DRAWN BY BDM
CHECKED BY TGC

Revised 5/2/07