

F.A.P. RTE.	SECTION	COUNTY	TOTAL SHEETS	SHEET NO.
95	*	EFFINGHAM	409	41
FED. ROAD DIST. NO. 7 ILLINOIS			FED. AID PROJECT	
*6,7Y, RS-1, 6B-1, 7B-1 & 7BR-2			CONTRACT NO. 94356	

STAGE I

NOTES:

1. THIS WORK WILL BE MEASURED AND PAID FOR AT THE CONTRACT UNIT PRICE EACH FOR TRAFFIC CONTROL AND PROTECTION (SPECIAL), LOCATION 2. THIS PRICE SHALL INCLUDE ANY NECESSARY TRAFFIC CONTROL STANDARDS AND ALL TRAFFIC CONTROL WORK REQUIRED FOR STAGE I AND STAGE II.

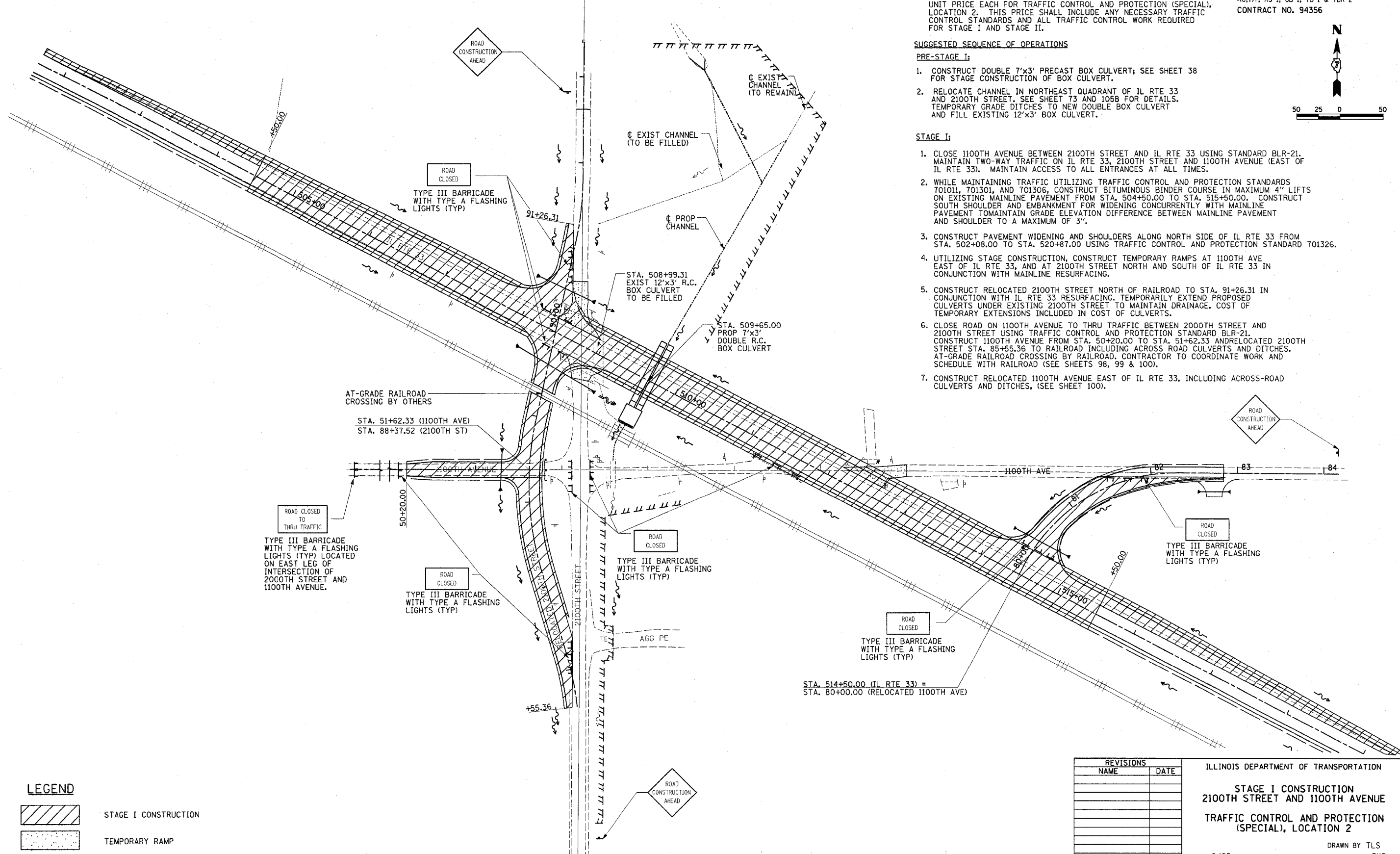
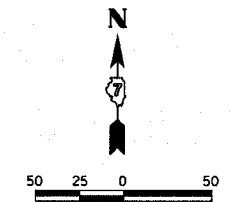
SUGGESTED SEQUENCE OF OPERATIONS

PRE-STAGE I:

1. CONSTRUCT DOUBLE 7'x3' PRECAST BOX CULVERT; SEE SHEET 38 FOR STAGE CONSTRUCTION OF BOX CULVERT.
2. RELOCATE CHANNEL IN NORTHEAST QUADRANT OF IL RTE 33 AND 2100TH STREET. SEE SHEET 73 AND 105B FOR DETAILS. TEMPORARY GRADE DITCHES TO NEW DOUBLE BOX CULVERT AND FILL EXISTING 12'x3' BOX CULVERT.

STAGE I:

1. CLOSE 1100TH AVENUE BETWEEN 2100TH STREET AND IL RTE 33 USING STANDARD BLR-21. MAINTAIN TWO-WAY TRAFFIC ON IL RTE 33, 2100TH STREET AND 1100TH AVENUE (EAST OF IL RTE 33). MAINTAIN ACCESS TO ALL ENTRANCES AT ALL TIMES.
2. WHILE MAINTAINING TRAFFIC UTILIZING TRAFFIC CONTROL AND PROTECTION STANDARDS 70101, 701301, AND 701306, CONSTRUCT BITUMINOUS BINDER COURSE IN MAXIMUM 4" LIFTS ON EXISTING MAINLINE PAVEMENT FROM STA. 504+50.00 TO STA. 515+50.00. CONSTRUCT SOUTH SHOULDER AND EMBANKMENT FOR WIDENING CONCURRENTLY WITH MAINLINE PAVEMENT TO MAINTAIN GRADE ELEVATION DIFFERENCE BETWEEN MAINLINE PAVEMENT AND SHOULDER TO A MAXIMUM OF 3".
3. CONSTRUCT PAVEMENT WIDENING AND SHOULDERS ALONG NORTH SIDE OF IL RTE 33 FROM STA. 502+08.00 TO STA. 520+87.00 USING TRAFFIC CONTROL AND PROTECTION STANDARD 701326.
4. UTILIZING STAGE CONSTRUCTION, CONSTRUCT TEMPORARY RAMPS AT 1100TH AVE EAST OF IL RTE 33, AND AT 2100TH STREET NORTH AND SOUTH OF IL RTE 33 IN CONJUNCTION WITH MAINLINE RESURFACING.
5. CONSTRUCT RELOCATED 2100TH STREET NORTH OF RAILROAD TO STA. 91+26.31 IN CONJUNCTION WITH IL RTE 33 RESURFACING. TEMPORARILY EXTEND PROPOSED CULVERTS UNDER EXISTING 2100TH STREET TO MAINTAIN DRAINAGE. COST OF TEMPORARY EXTENSIONS INCLUDED IN COST OF CULVERTS.
6. CLOSE ROAD ON 1100TH AVENUE THRU TRAFFIC BETWEEN 2000TH STREET AND 2100TH STREET USING TRAFFIC CONTROL AND PROTECTION STANDARD BLR-21. CONSTRUCT 1100TH AVENUE FROM STA. 50+20.00 TO STA. 51+62.33 AND RELOCATED 2100TH STREET STA. 85+55.36 TO RAILROAD INCLUDING ACROSS ROAD CULVERTS AND DITCHES. AT-GRADE RAILROAD CROSSING BY RAILROAD. CONTRACTOR TO COORDINATE WORK AND SCHEDULE WITH RAILROAD (SEE SHEETS 98, 99 & 100).
7. CONSTRUCT RELOCATED 1100TH AVENUE EAST OF IL RTE 33, INCLUDING ACROSS-ROAD CULVERTS AND DITCHES, (SEE SHEET 100).



LEGEND

- STAGE I CONSTRUCTION
- TEMPORARY RAMP

REVISIONS	
NAME	DATE

ILLINOIS DEPARTMENT OF TRANSPORTATION
STAGE I CONSTRUCTION
2100TH STREET AND 1100TH AVENUE
TRAFFIC CONTROL AND PROTECTION
(SPECIAL), LOCATION 2
 DATE 6/02
 DRAWN BY TLS
 CHECKED BY BKB