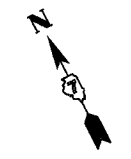


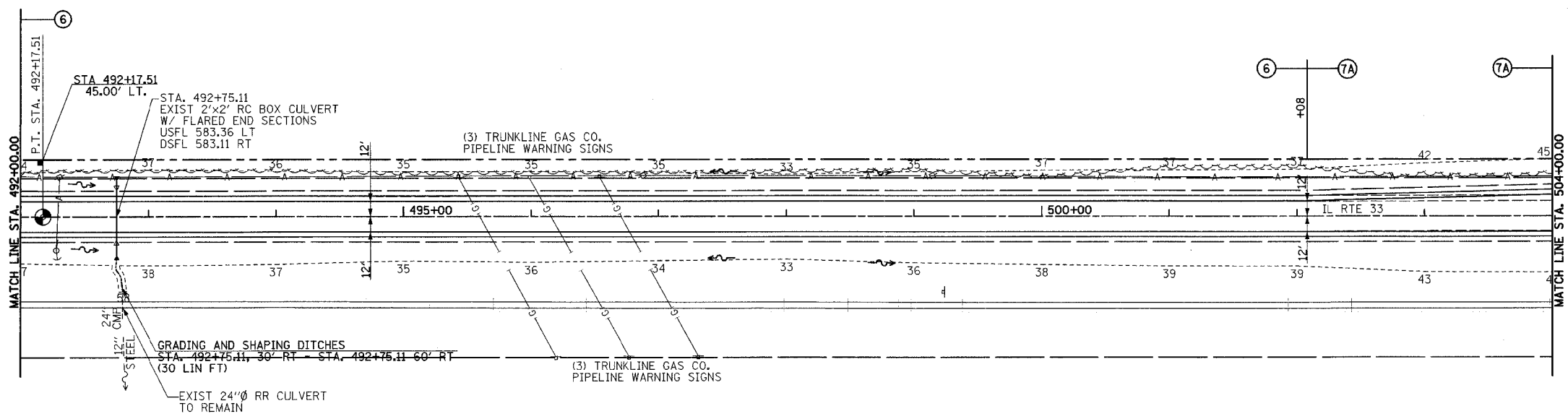
|                                                 |         |           |              |           |
|-------------------------------------------------|---------|-----------|--------------|-----------|
| F.A.P. RTE.                                     | SECTION | COUNTY    | TOTAL SHEETS | SHEET NO. |
| 95                                              | *       | EFFINGHAM | 409          | 72        |
| STA. 492+00.00 TO STA. 504+00.00                |         |           |              |           |
| FED. ROAD DIST. NO. 7 ILLINOIS FED. AID PROJECT |         |           |              |           |
| * (6.7Y, RS-1, 6B-1, 7B-1 & 7BR-2)              |         |           |              |           |
| CONTRACT NO. 94356                              |         |           |              |           |



PIPE CULVERTS, TYPE 1 REINFORCED CONCRETE - ELLIPTICAL, EQUIVALENT ROUND-SIZE 24"  
 STA. 492+75.11  
 LENGTH = 46'  
 OFFSET = 22' LT - 24' RT  
 UPSTREAM FLOWLINE = 584.70 LT  
 DOWNSTREAM FLOWLINE = 584.50 RT

PRC FLARED END SECTIONS - ELLIPTICAL, EQUIVALENT ROUND-SIZE 24"  
 LT & RT STA. 492+75.11 2 EACH

BOX CULVERT REMOVAL  
 21' LT - 18' RT STA. 492+75.11 39 LIN FT



PERMANENT SURVEY MARKERS, TYPE I  
 P.T. STA. 492+17.51 1 EACH

FURNISHING AND ERECTING RIGHT-OF-WAY MARKERS  
 45' LT STA. 492+17.51 1 EACH  
 TOTAL 1 EACH

|      |    |
|------|----|
| DATE | BY |
|      |    |
| DATE | BY |
|      |    |
| DATE | BY |
|      |    |

|      |    |
|------|----|
| DATE | BY |
|      |    |
| DATE | BY |
|      |    |
| DATE | BY |
|      |    |

