

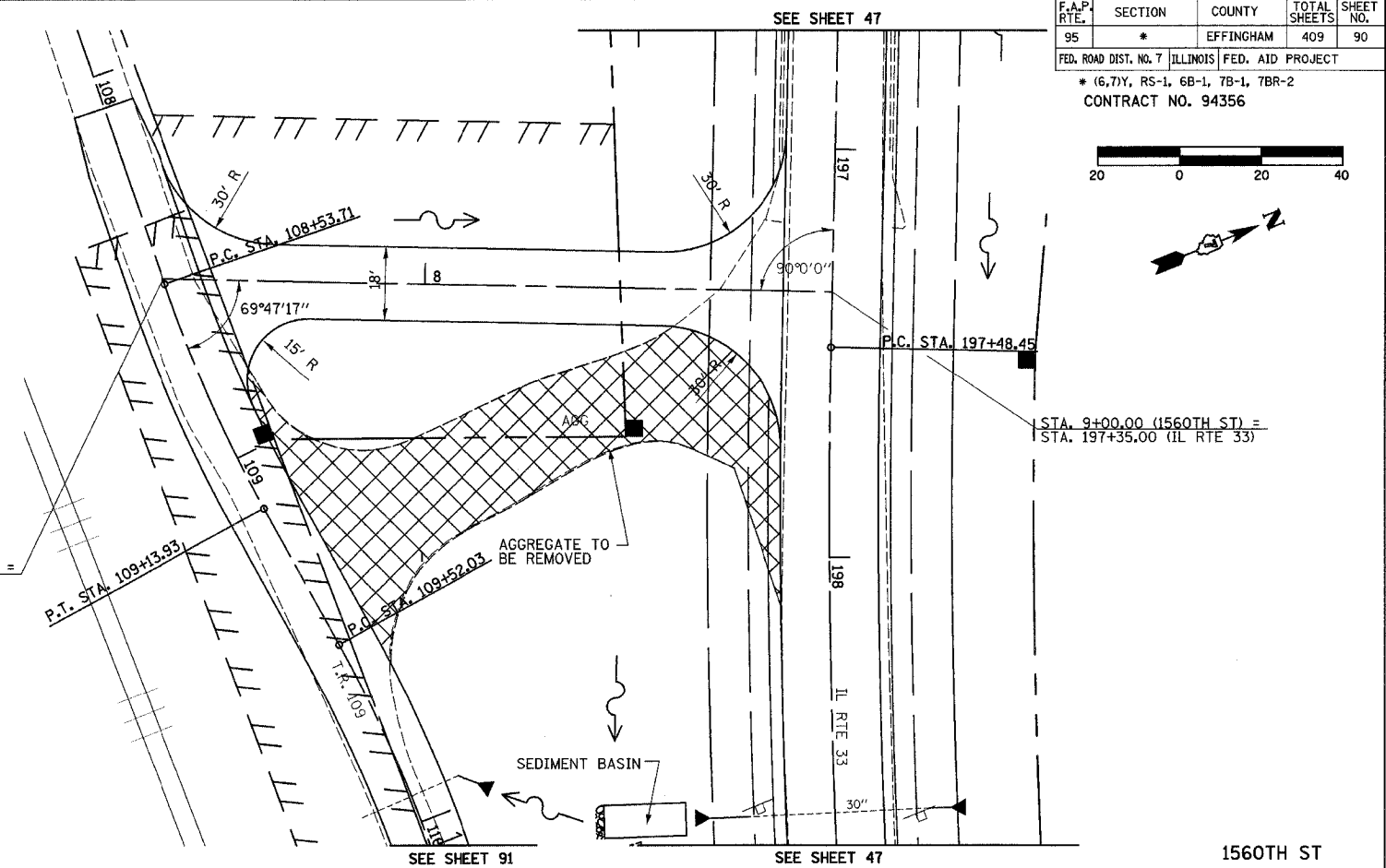
DATE: _____
 BY: _____
 SURVEYED: _____
 ADJUSTMENT CHECKED: _____
 NOTE BOOK NO.: _____
 PLOTTED FILE NAME: _____

DATE: _____
 BY: _____
 SURVEYED: _____
 GRADES CHECKED: _____
 STRUCTURE NOTATIONS OK'D: _____
 NOTE BOOK NO.: _____

PROP CURVE C56
 PI STA. = 108+83.89
 $\Delta = 9^\circ 51' 24''$ (LT)
 $D = 16^\circ 22' 06''$
 $R = 350.04'$
 $T = 30.18'$
 $L = 60.22'$
 $E = 1.30'$
 $e = \text{---}$
 $T.R. = \text{---}$
 $S.E. \text{ RUN} = \text{---}$
 $P.C. \text{ STA.} = 108+53.71$
 $P.T. \text{ STA.} = 109+13.93$

PROP CURVE C57
 PI STA. = 109+88.01
 $\Delta = 11^\circ 44' 13''$ (RT)
 $D = 16^\circ 22' 13''$
 $R = 350.00'$
 $T = 35.97'$
 $L = 71.70'$
 $E = 1.84'$
 $e = \text{---}$
 $T.R. = \text{---}$
 $S.E. \text{ RUN} = \text{---}$
 $P.C. \text{ STA.} = 109+52.03$
 $P.T. \text{ STA.} = 110+23.73$

STA. 7+37.71 (1560TH ST) =
 STA. 108+52.35 (TR109)



F.A.P. RTE.	SECTION	COUNTY	TOTAL SHEETS	SHEET NO.
95	*	EFFINGHAM	409	90

FED. ROAD DIST. NO. 7 ILLINOIS FED. AID PROJECT
 * (6.7)Y, RS-1, 6B-1, 7B-1, 7BR-2
 CONTRACT NO. 94356

