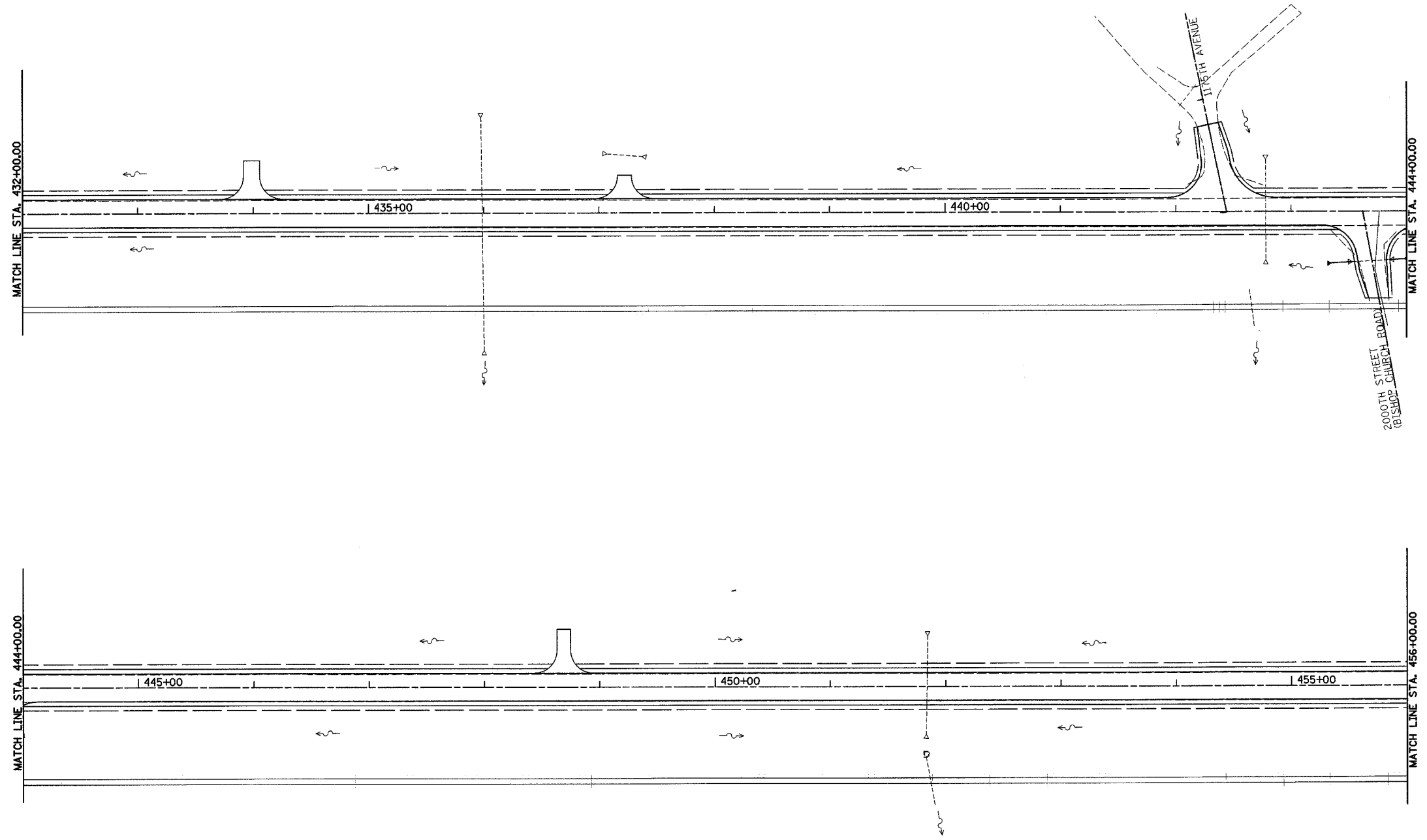
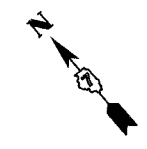


F.A.P. RTE.	SECTION	COUNTY	TOTAL SHEETS	SHEET NO.
95	(6,7)Y, RS-1, 6B-1, 7B-1 & 7BR-2	EFFINGHAM	409	119
FED. ROAD DIST. NO. 7 ILLINOIS FED. AID PROJECT				
CONTRACT NO. 94356				



LEGEND

- PERIMETER EROSION BARRIER
- TEMPORARY DITCH CHECK
- EARTH EXCAVATION FOR EROSION CONTROL
- INLET AND PIPE PROTECTION
- STONE RIPRAP OR GABIONS (SEE SCHEDULE)
- EROSION CONTROL BLANKET
- EXISTING RIPRAP

REVISIONS	
NAME	DATE

ILLINOIS DEPARTMENT OF TRANSPORTATION

EROSION CONTROL PLAN
 STA 432+00.00 TO STA 456+00.00
 SHEET 14 OF 24

DATE 2/02

DRAWN BY: BDM
 CHECKED BY: TGC