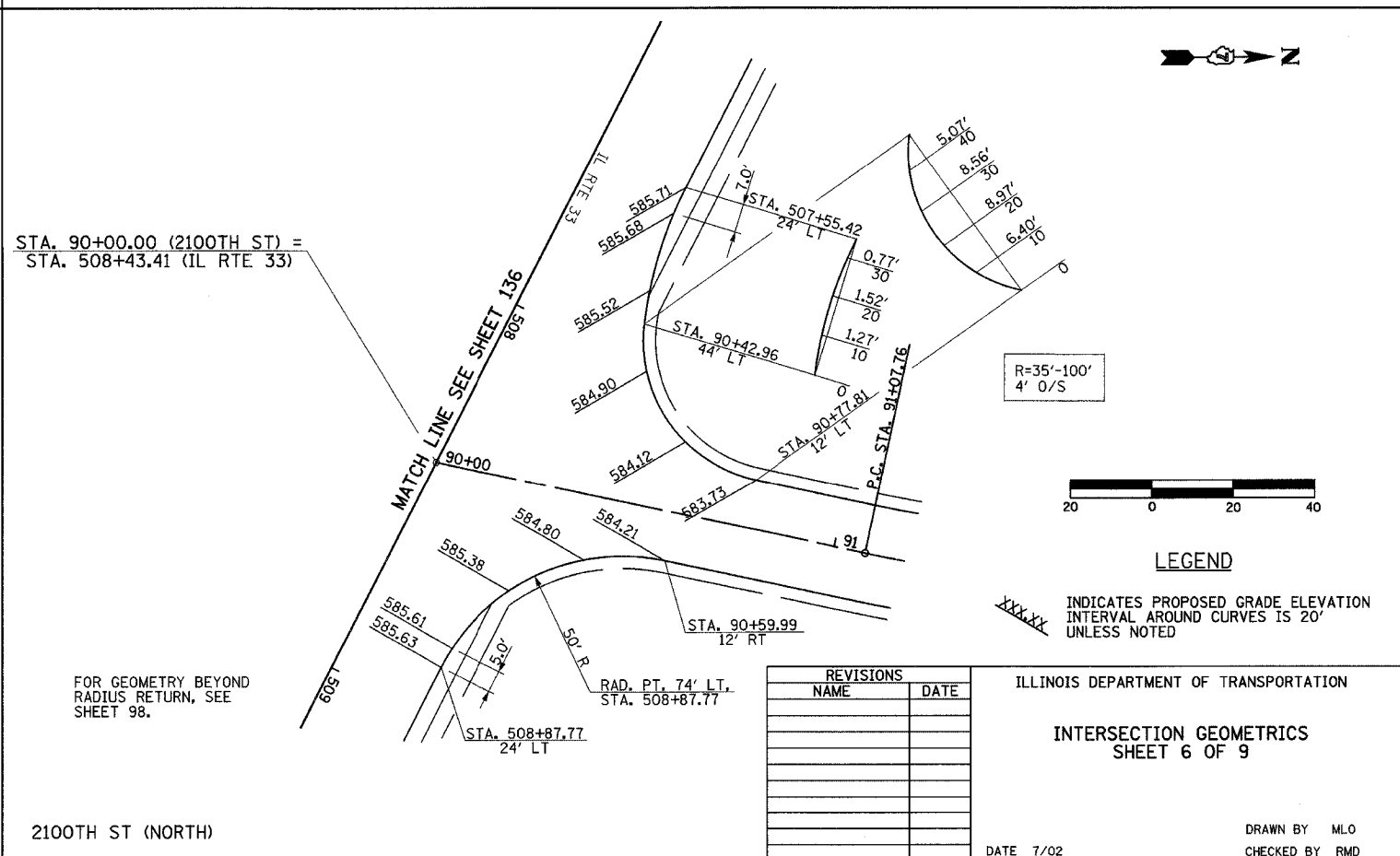
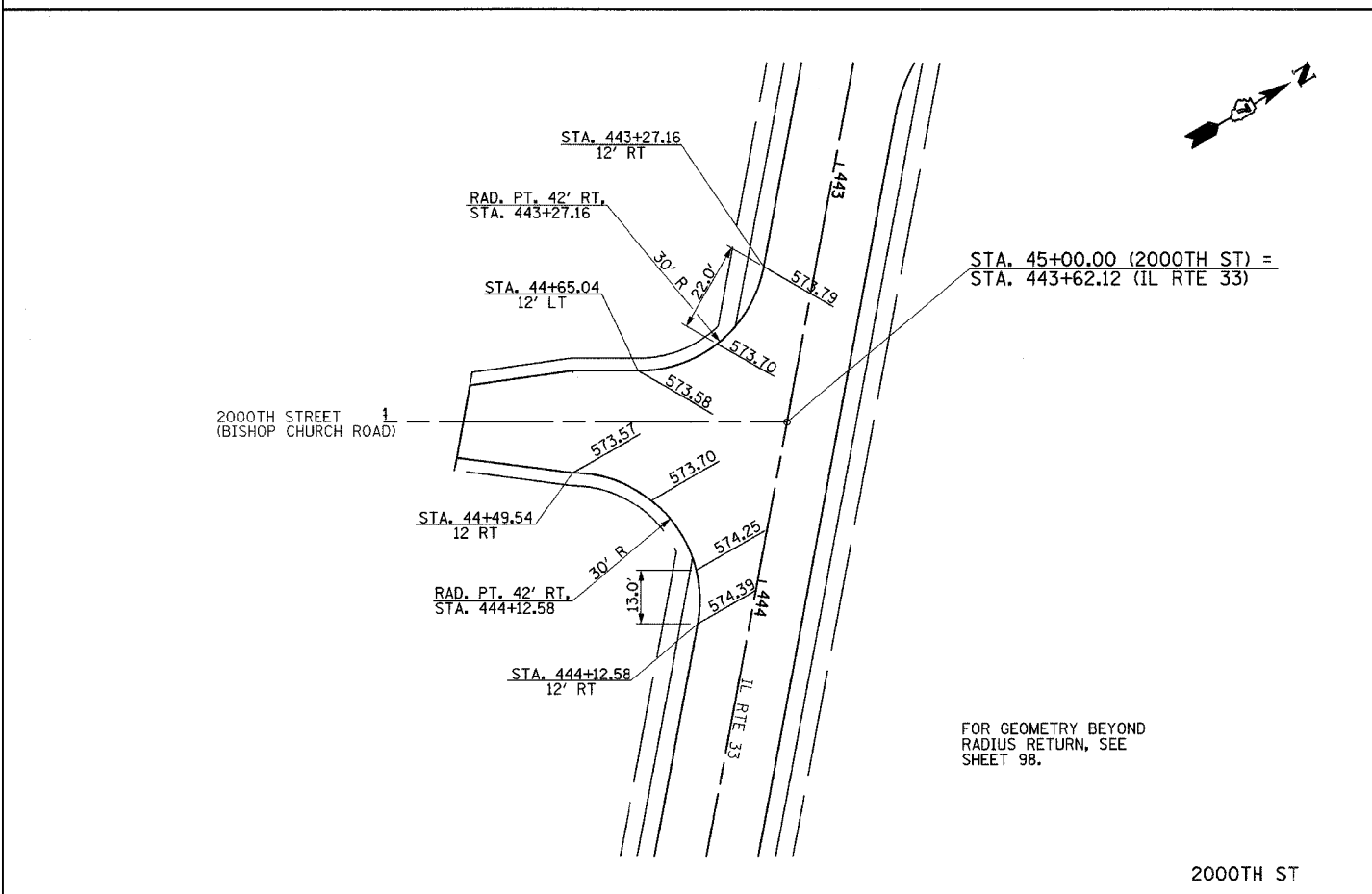
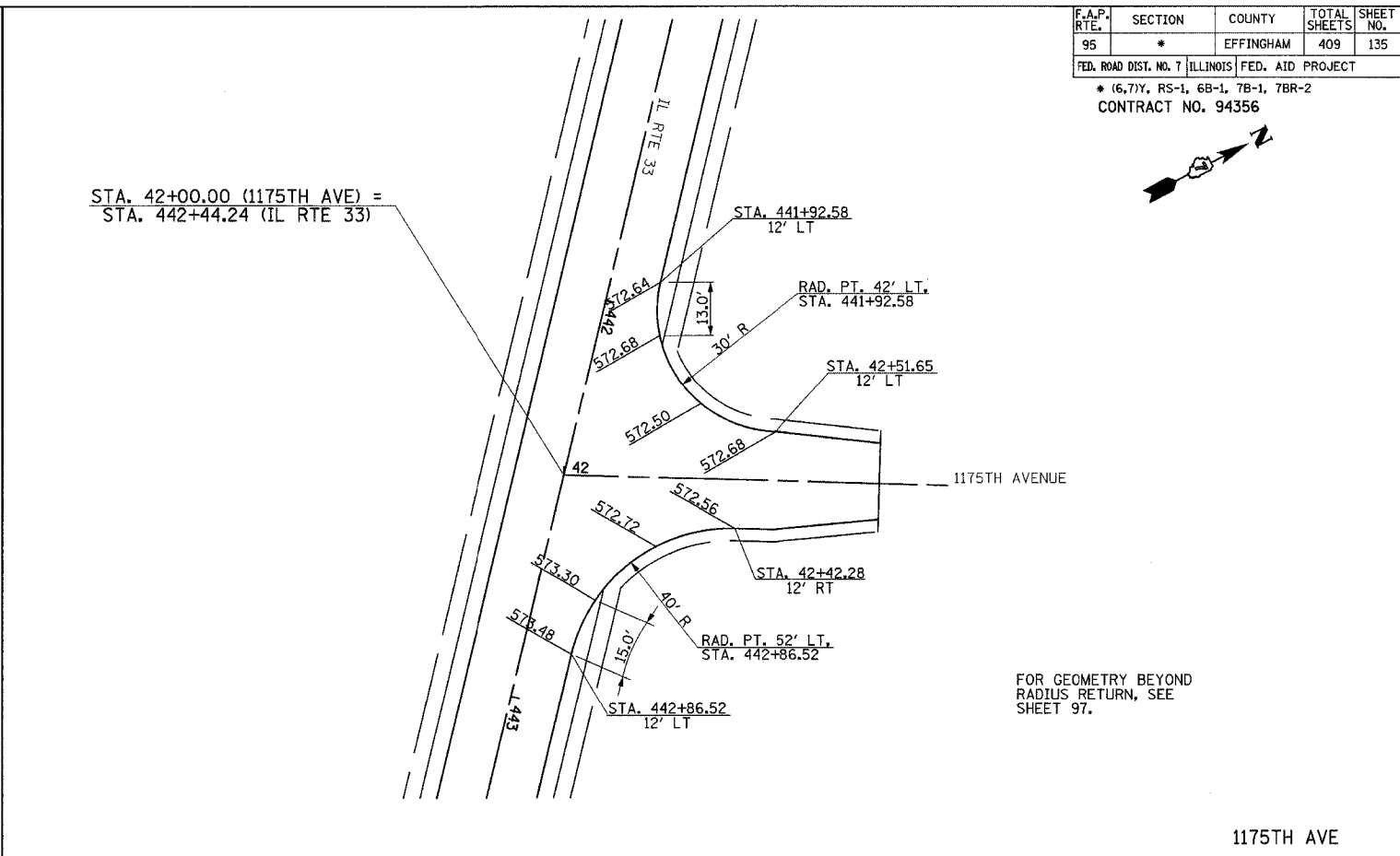
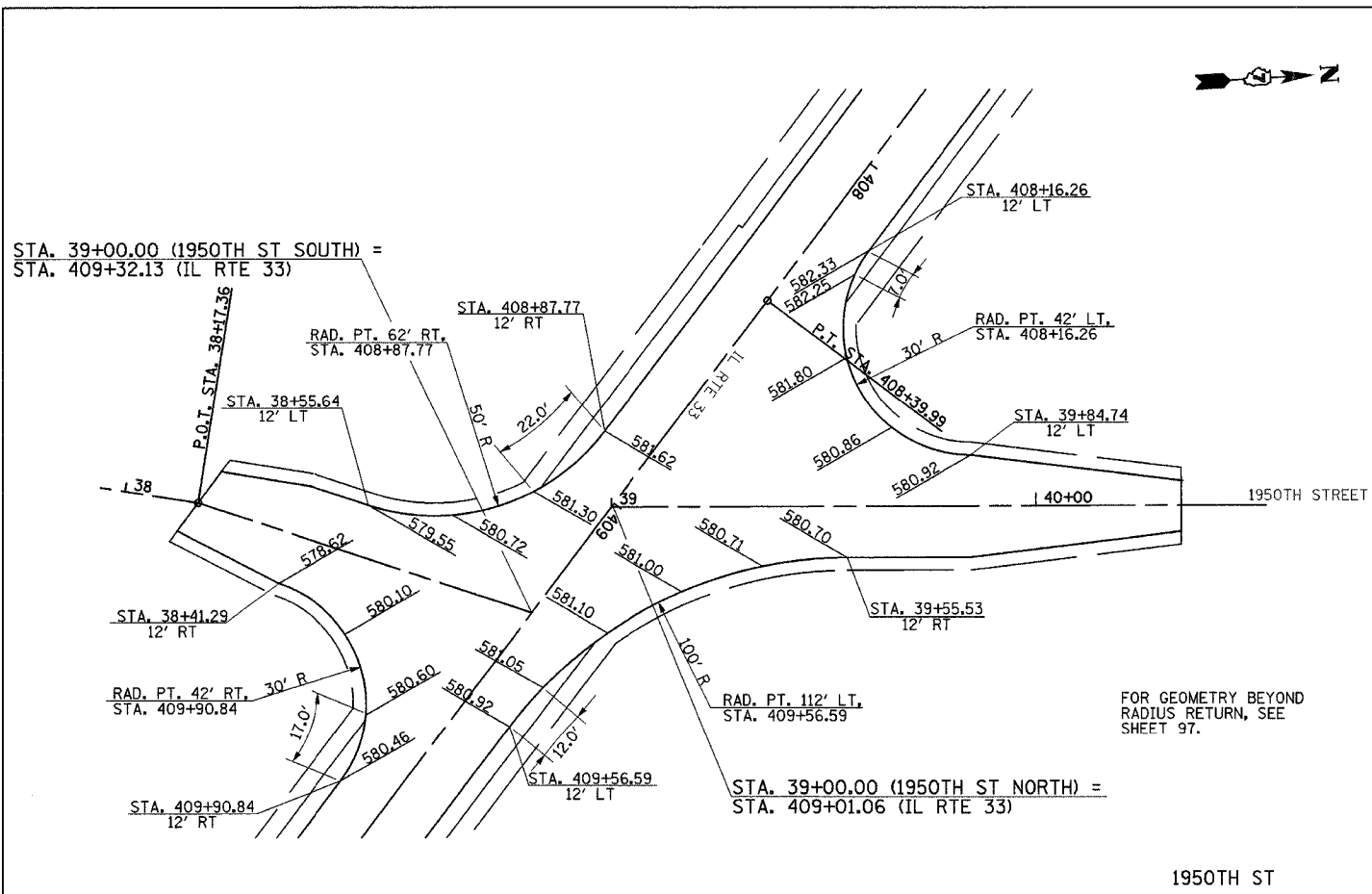
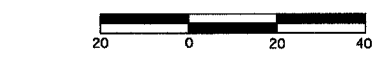


F.A.P. RTE.	SECTION	COUNTY	TOTAL SHEETS	SHEET NO.
95	*	EFFINGHAM	409	135
FED. ROAD DIST. NO. 7 ILLINOIS FED. AID PROJECT				
* (6,7)Y, RS-1, 6B-1, 7B-1, 7BR-2				
CONTRACT NO. 94356				



R=35'-100'
4' O/S



LEGEND

XXXXX INDICATES PROPOSED GRADE ELEVATION INTERVAL AROUND CURVES IS 20' UNLESS NOTED

REVISIONS	
NAME	DATE

ILLINOIS DEPARTMENT OF TRANSPORTATION
INTERSECTION GEOMETRICS
SHEET 6 OF 9
DRAWN BY MLO
CHECKED BY RMD
DATE 7/02