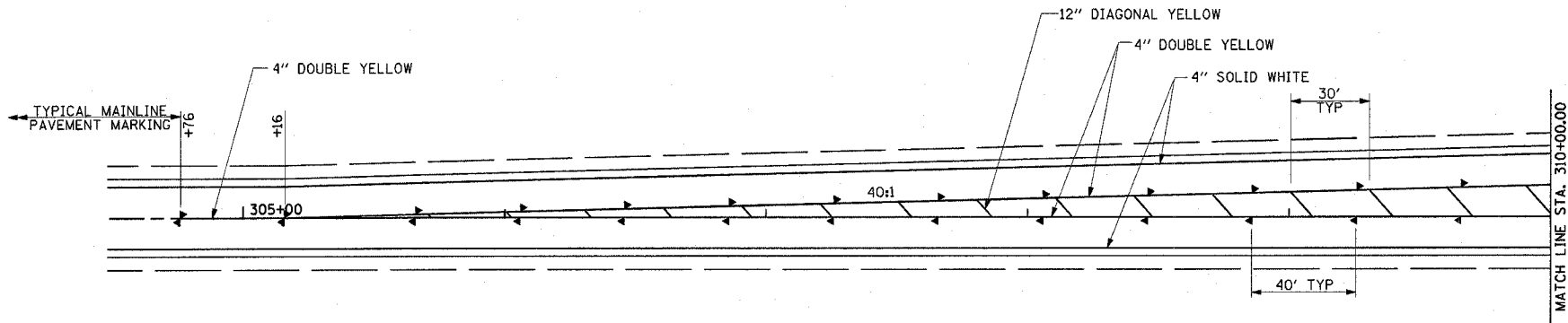
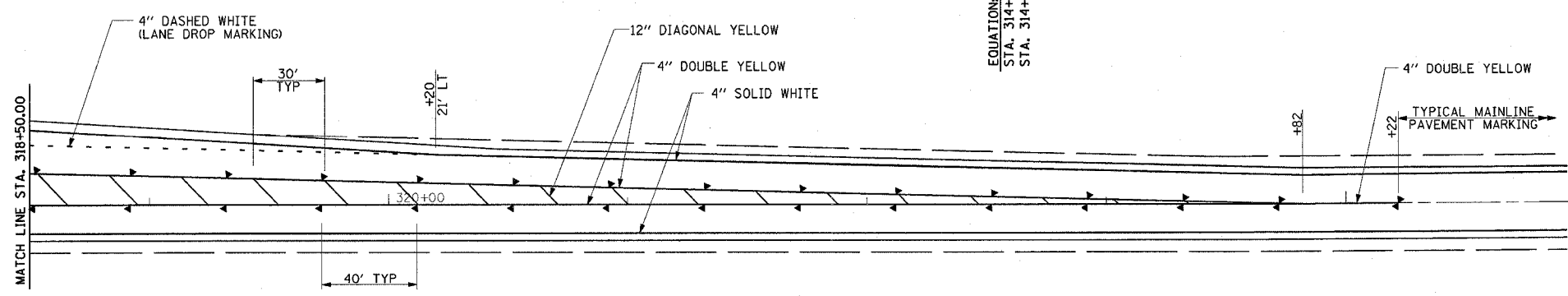
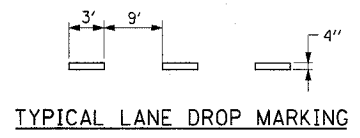
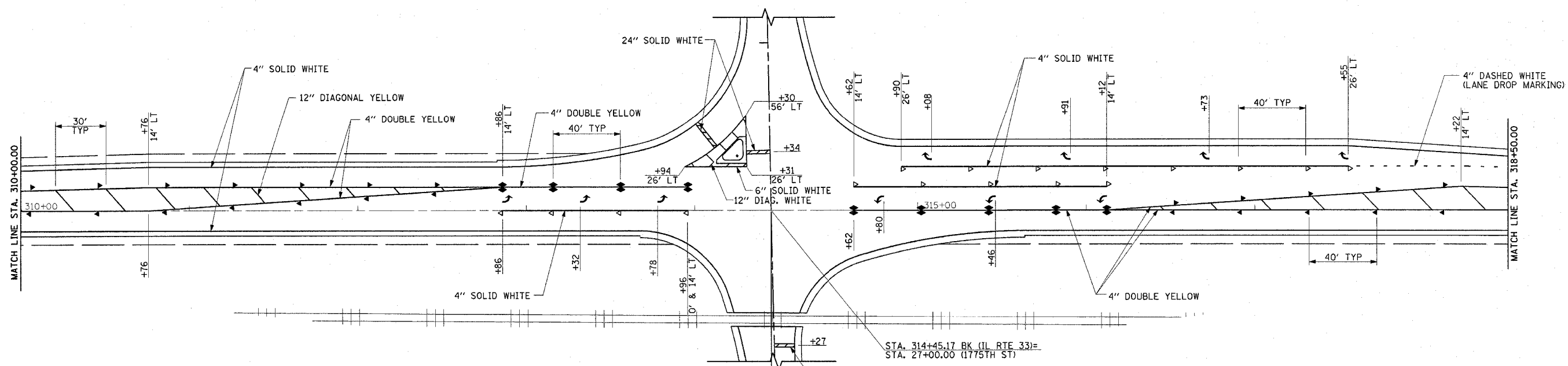
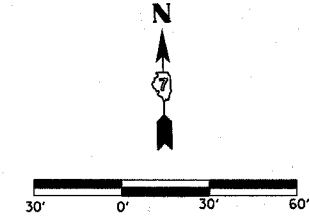


F.A.P. RITE	SECTION	COUNTY	TOTAL SHEETS	SHEET NO.
95		EFFINGHAM	409	151
FED. ROAD DIST. NO. 7		ILLINOIS	FED. AID PROJECT	
* (6,7)Y, RS-1, 6B-1, 7B-1 & 7BR-2				
CONTRACT NO. 94356				



RAISED REFLECTIVE PAVEMENT MARKER LEGEND

- ▷ ONE-WAY CRYSTAL MARKER
- ▶ ONE-WAY AMBER MARKER
- ◀ TWO-WAY AMBER MARKER



NOTES:

1. SEE SHEET 150 FOR SPACING AND SIZE OF LEFT TURN ARROWS AND "ONLY" MARKINGS.
2. ALL PAVEMENT MARKINGS DETAILED ON THIS SHEET TO BE EPOXY PAVEMENT MARKINGS.

REVISIONS	
NAME	DATE

ILLINOIS DEPARTMENT OF TRANSPORTATION

PAVEMENT MARKING PLAN
INTERSECTION OF IL RTE 33
AND 1775TH STREET

DATE 1/03

DRAWN BY ASB
CHECKED BY SJK

Revised 5/2/07