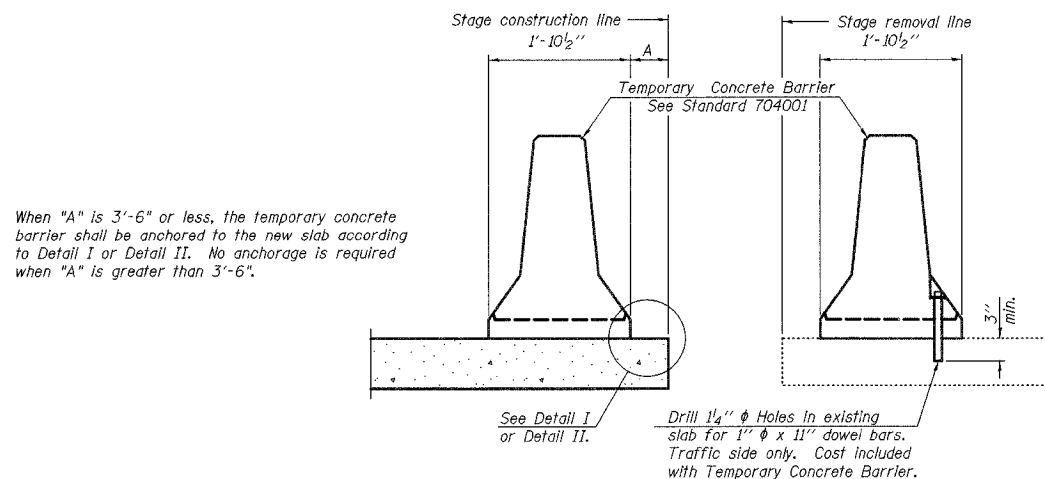


F.A.P. R/L	SECTION	COUNTY	TOTAL SHEETS	SHEET NO.
95	7B-1	EFFINGHAM	409	348
FED. ROAD DIST. NO. 7		ILLINOIS	FED. AID PROJECT	

SHEET NO. 3
SHEETS 18

CONTRACT NO. 94356



NEW SLAB

EXISTING SLAB

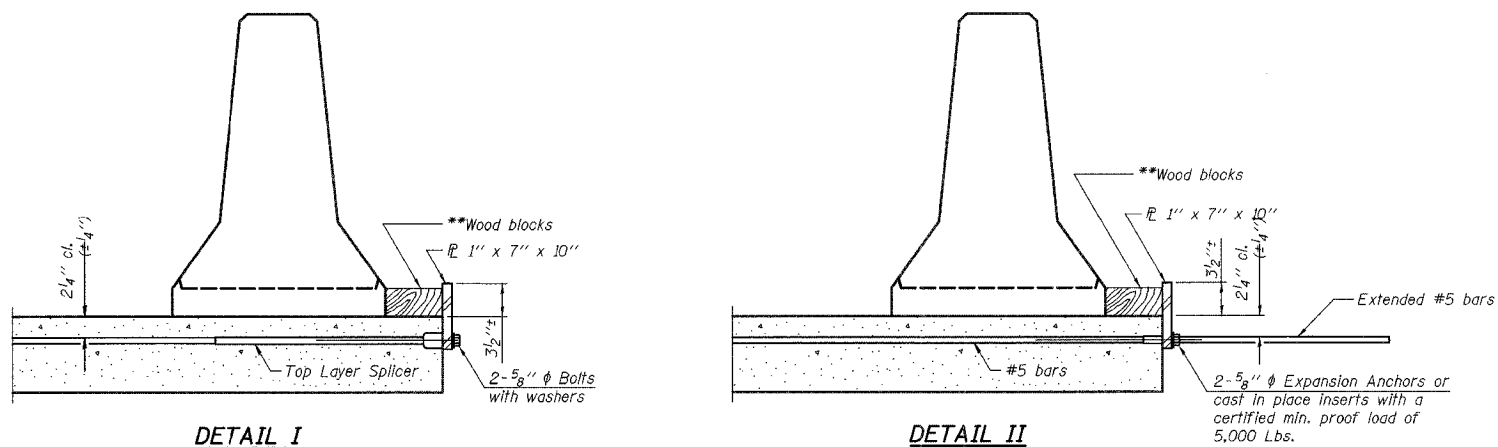
SECTIONS THRU SLAB

NOTES

Detail I - With Bar Splicer or Couplers:
Connect one (1) 1"x7"x10" steel \bar{r} to the top layer of couplers with 2-5/8" ϕ bolts screwed to coupler at approximate \bar{c} of each barrier panel.

Detail II - With Extended Reinforcement Bars:
Connect one (1) 1"x7"x10" steel \bar{r} to the concrete slab with 2-5/8" ϕ Expansion Anchors or cast in place inserts spaced between the top layer of reinforcement at approximate \bar{c} of each barrier panel.

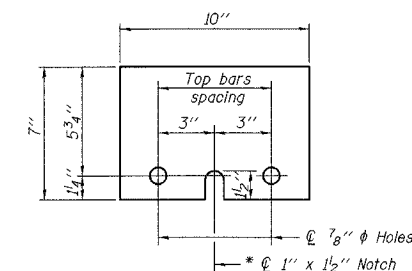
Cost of anchorage is included with Temporary Concrete Barrier. The 1" x 7" x 10" plate shall not be removed until stage II construction forms and all reinforcement bars are in place and the concrete is ready to be placed.



DETAIL I

DETAIL II

** Wood blocks may be omitted when required to provide minimum stage traffic lane width. When the wood blocks are omitted, the concrete barrier shall be in direct contact with the steel retainer plate.



STEEL RETAINER \bar{r} 1" x 7" x 10"

* Required only with Detail II

R-27

11-1-06

ILLINOIS DEPARTMENT OF TRANSPORTATION
TEMPORARY CONCRETE BARRIER
ILLINOIS ROUTE 33 OVER
BIG SALT CREEK
F.A.P. ROUTE 95
SECTION 7B-1
EFFINGHAM COUNTY
STA. 146+62.50
STRUCTURE NUMBER 025-0101

DATE: OCT. 2003

DRAWN BY: NJV
CHECKED BY: PBB/SJK