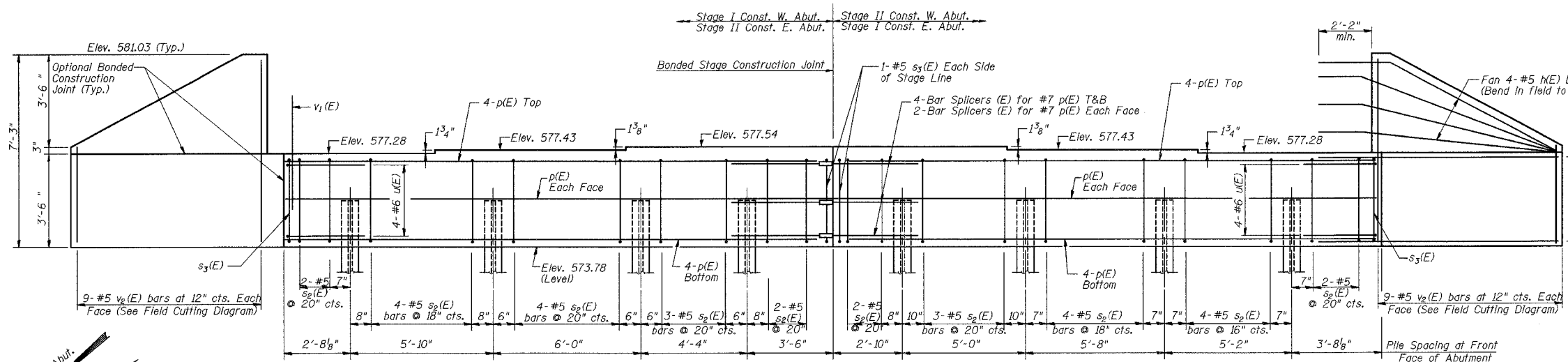


F.A.P. RTE.	SECTION	COUNTY	TOTAL SHEETS	SHEET NO.
95	6B-1	EFFINGHAM	409	379
FED. ROAD DIST. NO. 7		ILLINOIS	FED. AID PROJECT	
CONTRACT NO. 94356				

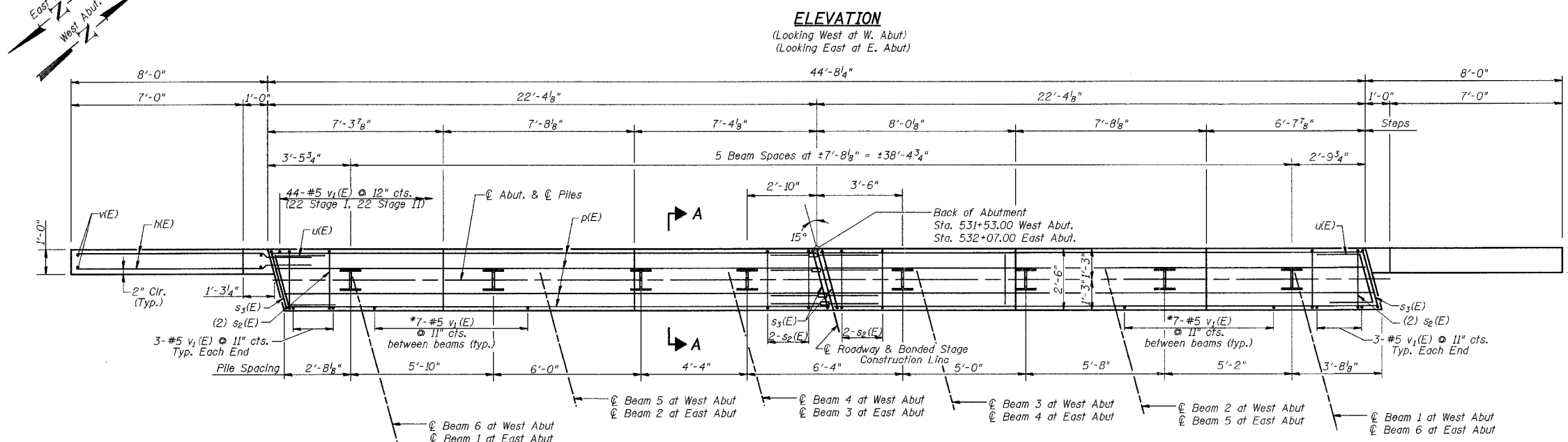
SHEET NO. 9
SHEETS 12



NOTES:
All edges shall have standard $\frac{3}{4}$ " chamfers except as noted.
Pour steps monolithically with cap.
The Test Pile shall be driven to 110 percent of the nominal bearing indicated in the pile data information.
The Steel H-Piles shall be according to AASHTO M270 Grade 50.
Excavation behind existing abutment walls shall be performed to balance front and back soil pressure before removing the existing superstructure. The Contractor shall sawcut the upper portion of the existing abutment at the stage removal line before Stage I removal to ensure the remaining portion will not be prematurely damaged.

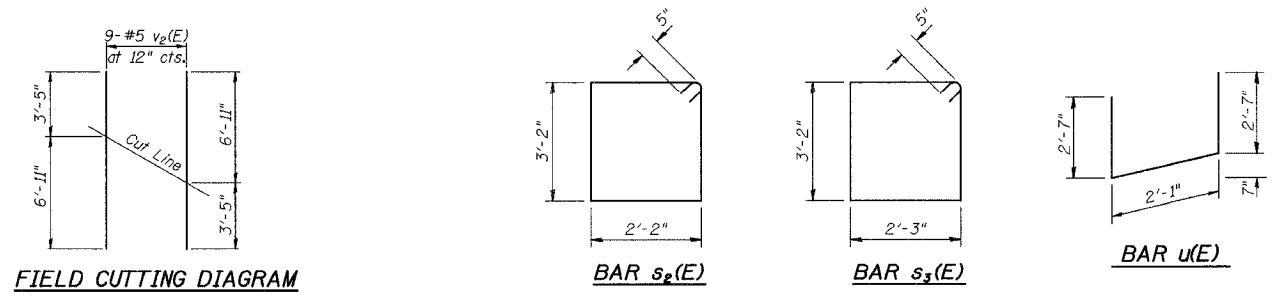
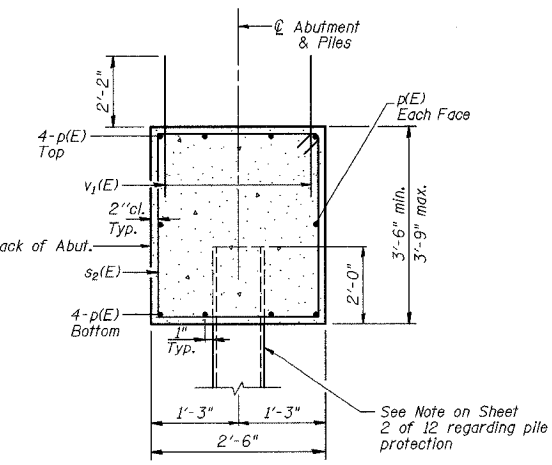
PILE DATA

Type:	HP10x42
Nominal Required Bearing:	334 kips
Allowable Resistance Available:	111 kips
Est. Length:	At West Abut.: 36 feet At East Abut.: 36 feet
No. Required:	At West Abut.: 8 At East Abut.: 7 + 1 test pile



**TWO ABUTMENTS
BILL OF MATERIAL**

Bar	No.	Size	Length	Shape	
h(E)	72	#5	10'-9"	—	
p(E)	40	#7	22'-0"	—	
s ₂ (E)	60	#5	11'-6"	□	
s ₃ (E)	8	#5	11'-8"	□	
u(E)	16	#6	7'-3"	✓	
v ₁ (E)	172	#5	4'-4"	—	
v ₂ (E)	36	#5	10'-4"	—	
Structure Excavation				Cu Yd	80
Concrete Structures				Cu Yd	36.9
Reinforcement Bars, Epoxy Coated				Pound	4760
Furnishing Steel Piles				Foot	540
HP 10x42				Foot	540
Driving Piles				Foot	540
Test Pile Steel				Each	1
HP 10x42				Each	1
Bar Splicers				Each	20



ILLINOIS DEPARTMENT OF TRANSPORTATION
ABUTMENTS
ILLINOIS ROUTE 33 OVER
BISHOP CREEK
F.A.P. RTE. 95
SECTION 6B-1
EFFINGHAM COUNTY
Sta. 531+80
STRUCTURE NUMBER 025-0097

DATE: APR. 2002
DRAWN BY: BDM
CHECKED BY: SJK