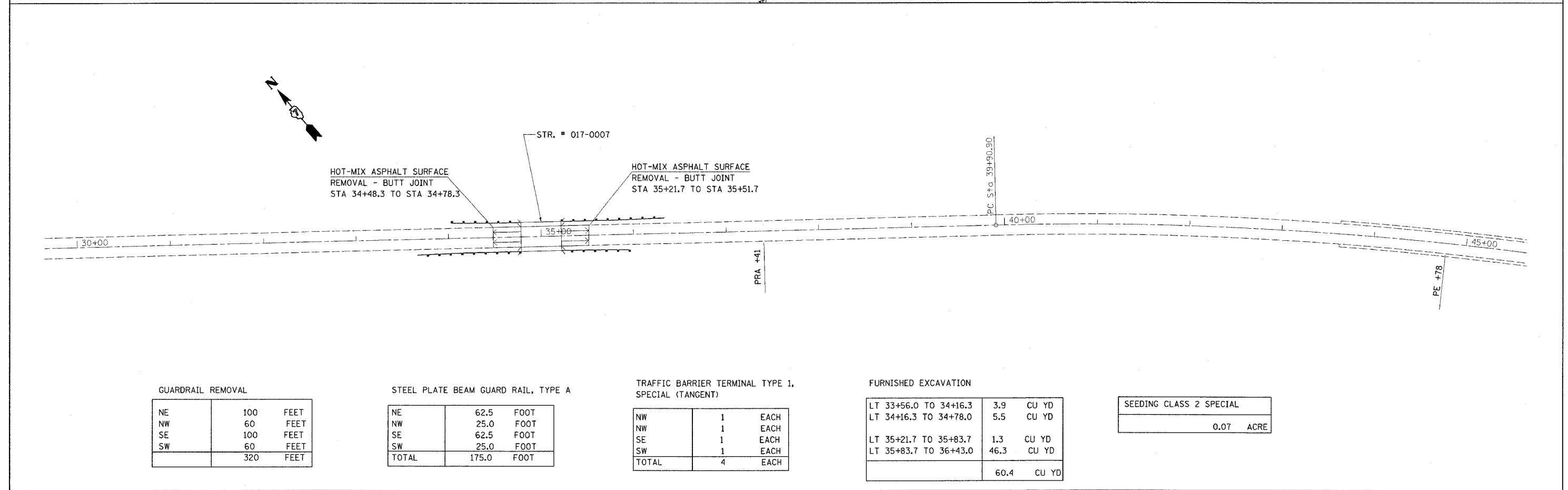
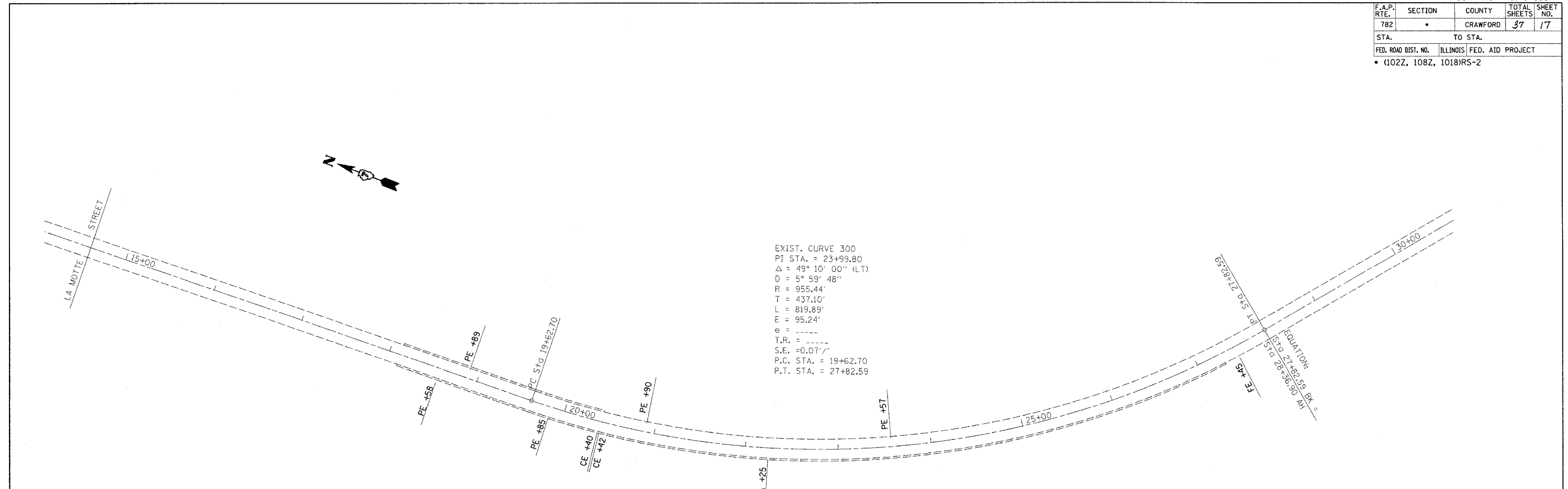


F.A.P. RTE.	SECTION	COUNTY	TOTAL SHEETS	SHEET NO.
782	*	CRAWFORD	37	17
STA.		TO STA.		
FED. ROAD DIST. NO.		ILLINOIS FED. AID PROJECT		
* (102Z, 108Z, 1018)RS-2				



GUARDRAIL REMOVAL

NE	100	FEET
NW	60	FEET
SE	100	FEET
SW	60	FEET
TOTAL	320	FEET

STEEL PLATE BEAM GUARD RAIL, TYPE A

NE	62.5	FOOT
NW	25.0	FOOT
SE	62.5	FOOT
SW	25.0	FOOT
TOTAL	175.0	FOOT

TRAFFIC BARRIER TERMINAL TYPE 1, SPECIAL (TANGENT)

NW	1	EACH
NW	1	EACH
SE	1	EACH
SW	1	EACH
TOTAL	4	EACH

FURNISHED EXCAVATION

LT 33+56.0 TO 34+16.3	3.9	CU YD
LT 34+16.3 TO 34+78.0	5.5	CU YD
LT 35+21.7 TO 35+83.7	1.3	CU YD
LT 35+83.7 TO 36+43.0	46.3	CU YD
TOTAL	60.4	CU YD

SEEDING CLASS 2 SPECIAL

0.07	ACRE
------	------

PLOT DATE = 04/07/08  
 FILE NAME = #FILEL0  
 PLOT SCALE = #SCALE0  
 USER NAME = #USER0