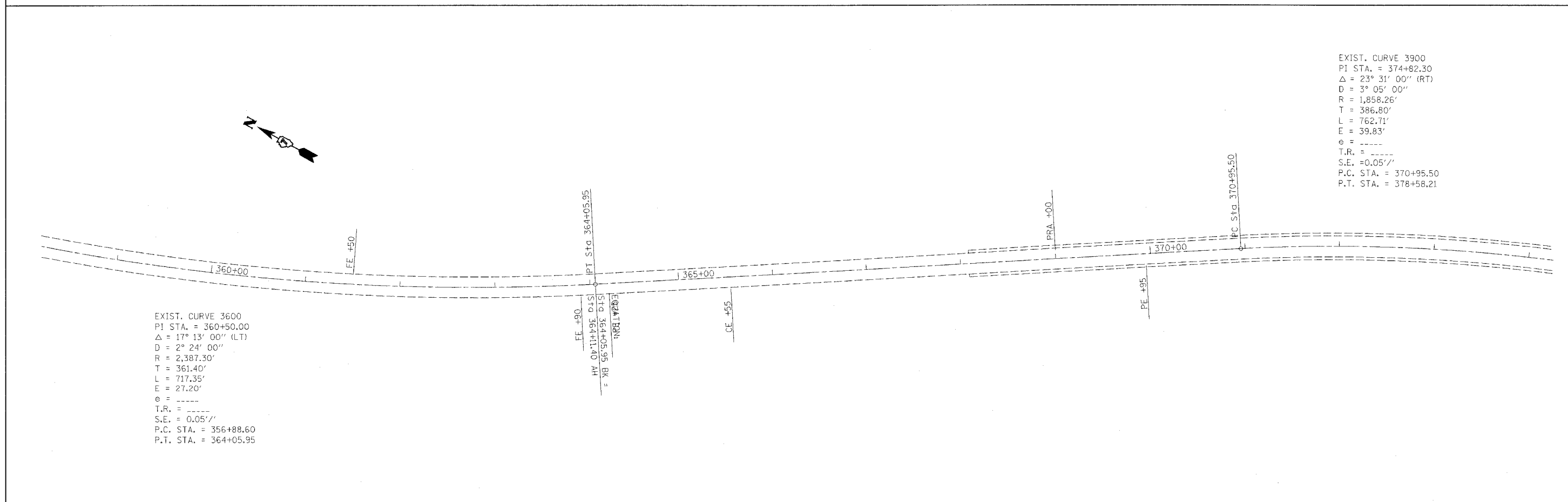
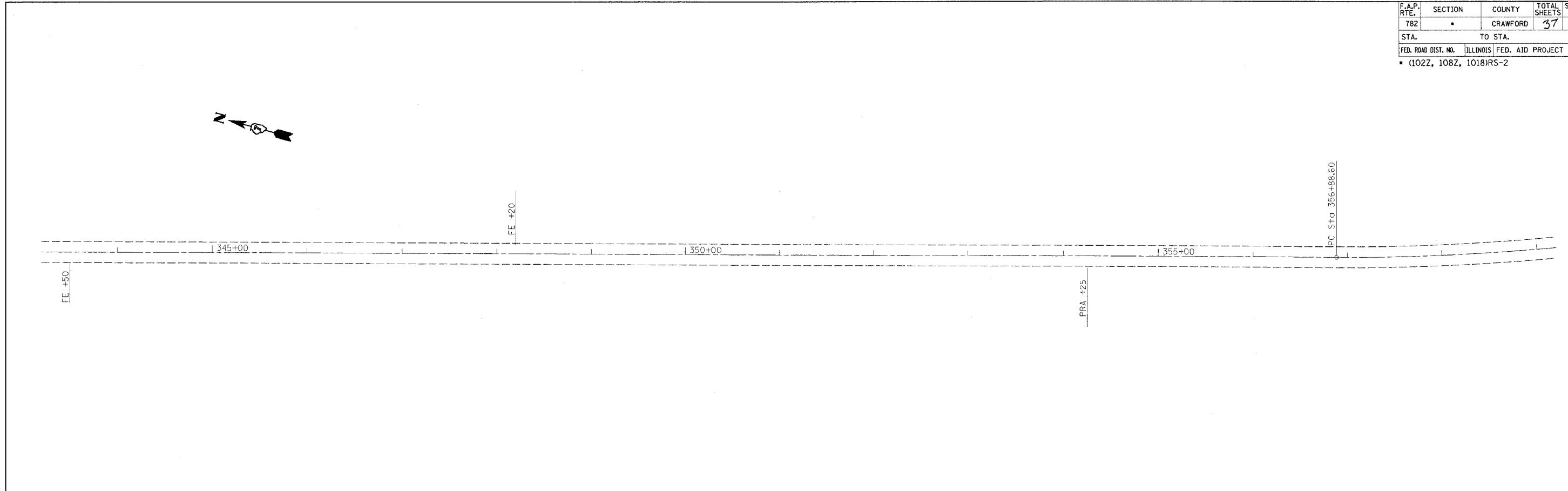


F.A.P. RTE.	SECTION	COUNTY	TOTAL SHEETS	SHEET NO.
782	*	CRAWFORD	37	28

STA. TO STA.

FED. ROAD DIST. NO. ILLINOIS FED. AID PROJECT

(102Z, 108Z, 1018)RS-2



EXIST. CURVE 3600
 PI STA. = 360+50.00
 $\Delta = 17^\circ 13' 00''$ (LT)
 $D = 2^\circ 24' 00''$
 $R = 2,387.30'$
 $T = 361.40'$
 $L = 717.35'$
 $E = 27.20'$
 $e = \text{-----}$
 $T.R. = \text{-----}$
 $S.E. = 0.05'/'$
 P.C. STA. = 356+88.60
 P.T. STA. = 364+05.95

EXIST. CURVE 3900
 PI STA. = 374+82.30
 $\Delta = 23^\circ 31' 00''$ (RT)
 $D = 3^\circ 05' 00''$
 $R = 1,858.26'$
 $T = 386.80'$
 $L = 762.71'$
 $E = 39.83'$
 $e = \text{-----}$
 $T.R. = \text{-----}$
 $S.E. = 0.05'/'$
 P.C. STA. = 370+95.50
 P.T. STA. = 378+58.21

FE +90
 PT Sta 364+05.95
 EQUATION:
 $HY \text{ OP} + 11 + 99 \text{ DTS}$
 $STA \text{ D} = 364 + 05.95 \text{ BK} =$
 $\frac{56' 56' 50' 00''}{100}$

PLOT DATE = 04/26/04
 PLOT SCALE = 1"=40'
 USER NAME = 010518