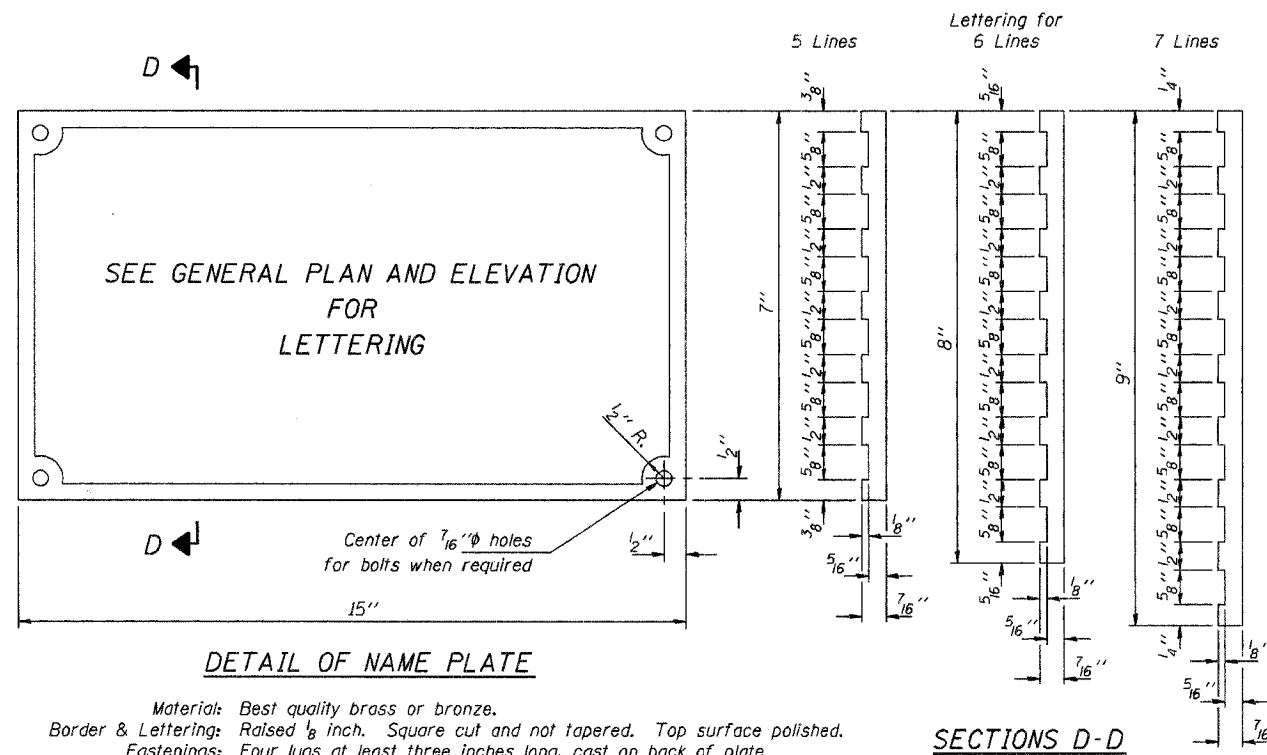


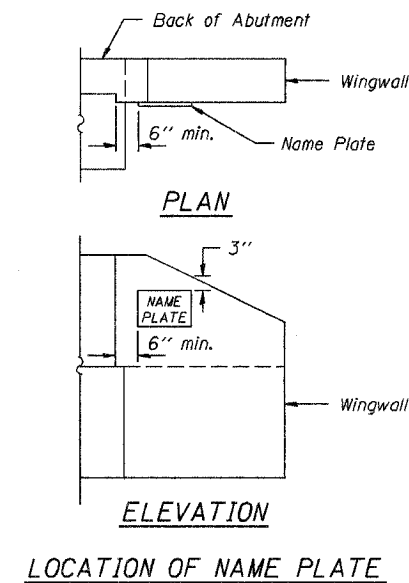
F.A.S. ROUTE NO.	SECTION	COUNTY	TOTAL SHEETS	SHEET
25-02.115-00-82	CRAWFORD	10	9	
STA.	TO STA.			
FED. ROAD DIST. NO.	ILLINOIS	PROJECT		



DETAIL OF NAME PLATE

Material: Best quality brass or bronze.
 Border & Lettering: Raised 1/8 inch. Square cut and not tapered. Top surface polished.
 Fastenings: Four lugs at least three inches long, cast on back of plate.

SECTIONS D-D



LOCATION OF NAME PLATE

Illinois Department of Transportation

PASSED APRIL 4, 2005
Thomas J. Homan
 Engineer of Bridge Design

APPROVED APRIL 4, 2005
Ralph E. Anderson
 Engineer of Bridges and Structures

ISSUED 7-1-995

NAME PLATE
STANDARD CN