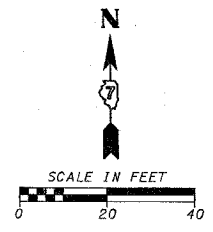
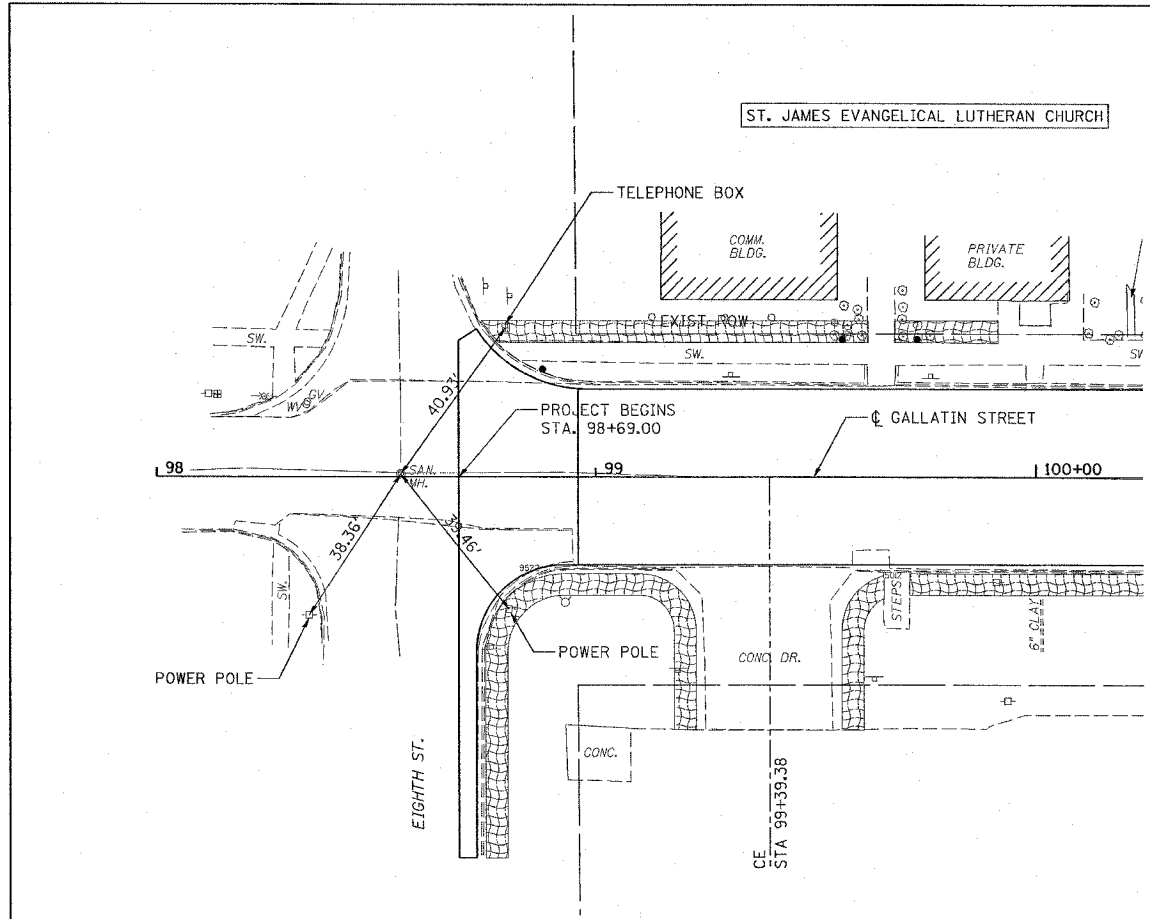
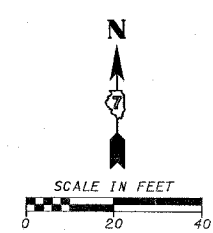
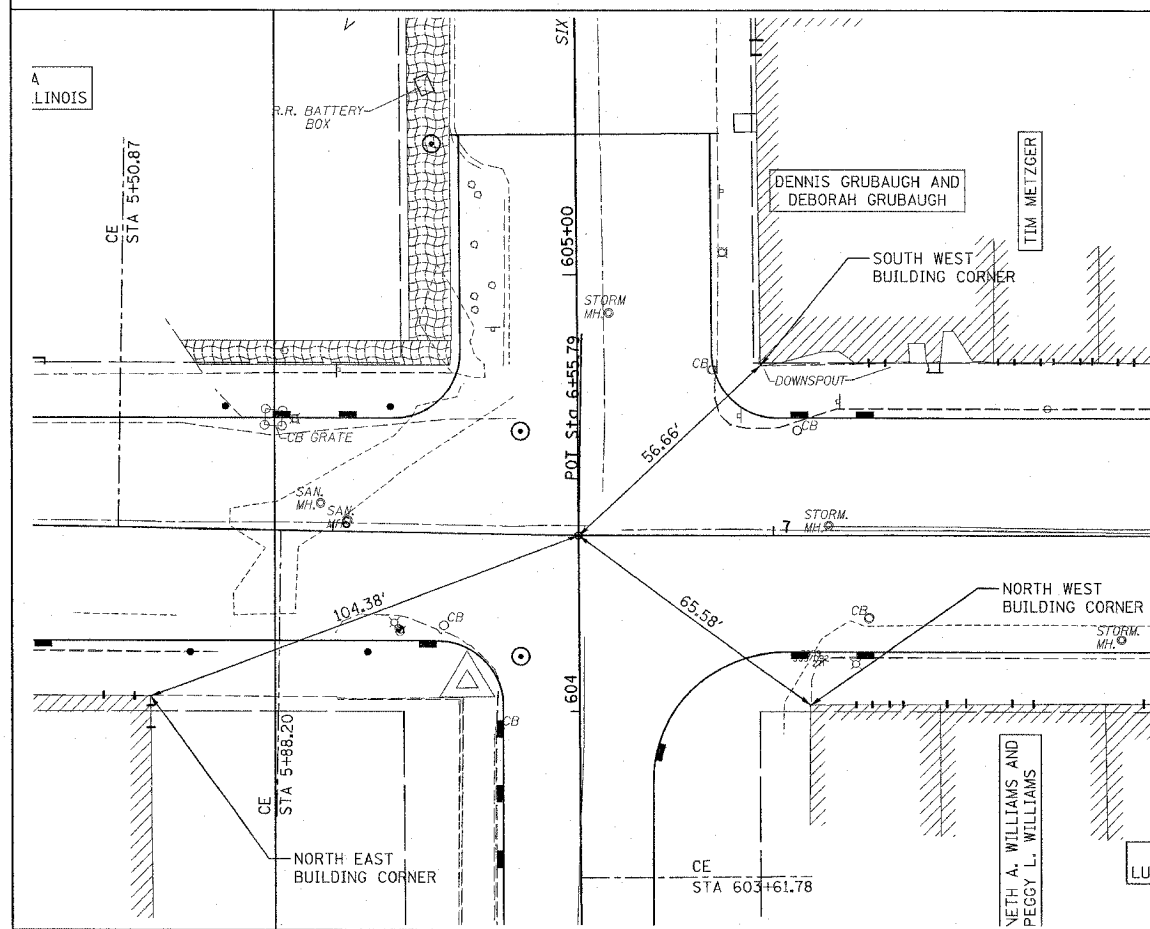
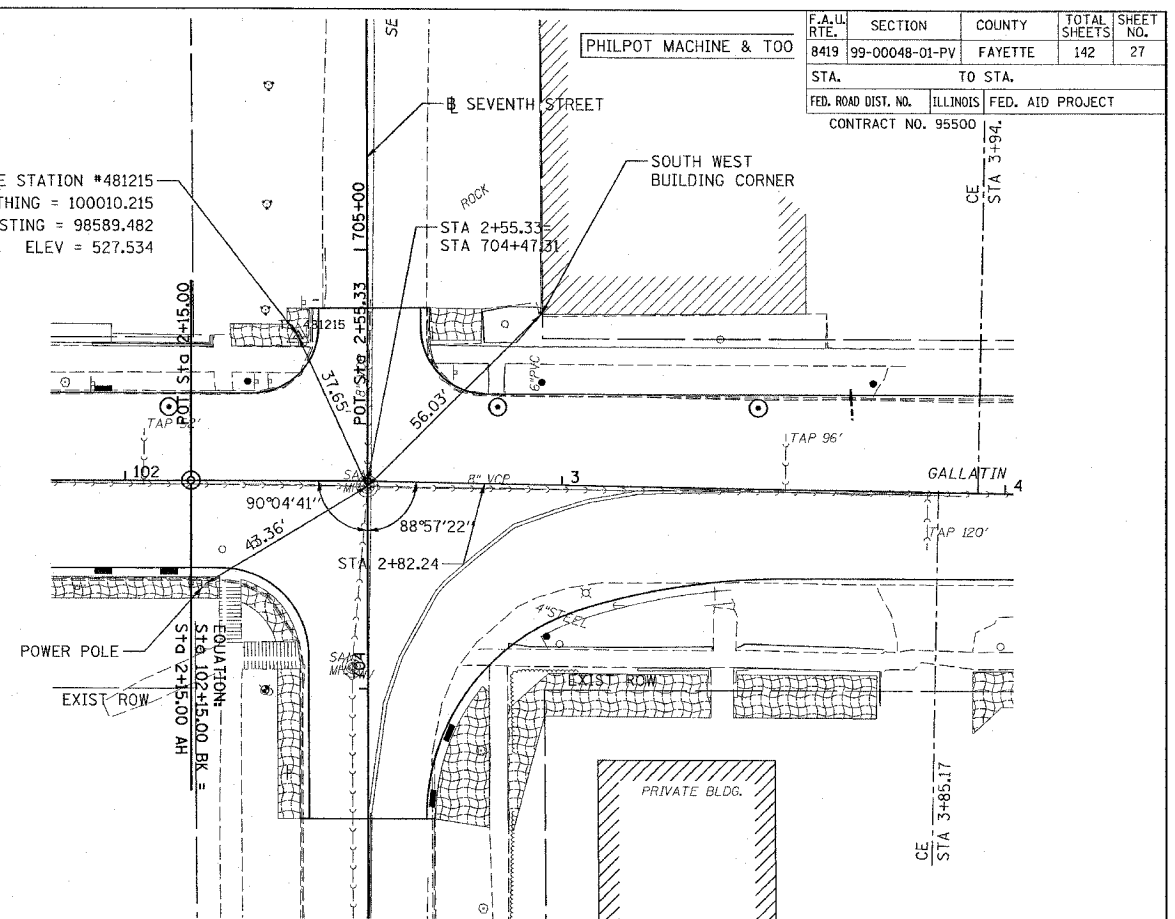


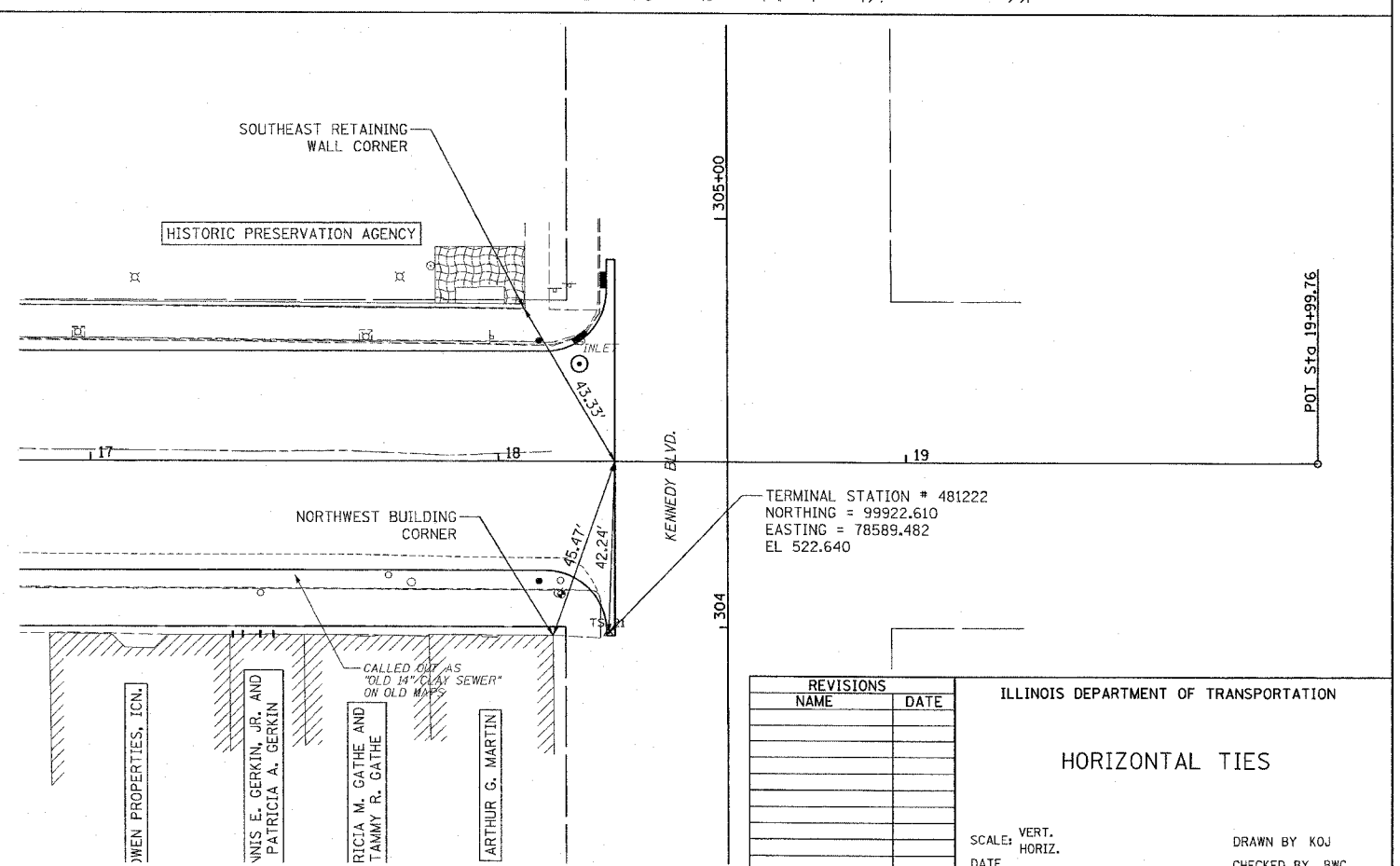
F.A. L. RTE.	SECTION	COUNTY	TOTAL SHEETS	SHEET NO.
8419	99-00048-01-PV	FAYETTE	142	27
STA.	TO STA.			
FED. ROAD DIST. NO.	ILLINOIS	FED. AID PROJECT		
CONTRACT NO. 95500				



TRAVERSE STATION #481215
 NORTHING = 100010.215
 EASTING = 98589.482
 ELEV = 527.534



TERMINAL STATION # 481222
 NORTHING = 99922.610
 EASTING = 78589.482
 EL 522.640



REVISIONS	
NAME	DATE

ILLINOIS DEPARTMENT OF TRANSPORTATION
HORIZONTAL TIES
 SCALE: VERT. _____
 DATE _____
 DRAWN BY KOJ
 CHECKED BY BWC

CADD FILE: /4812/TrFis.dgn
 PLOTTED: 01/23/2007