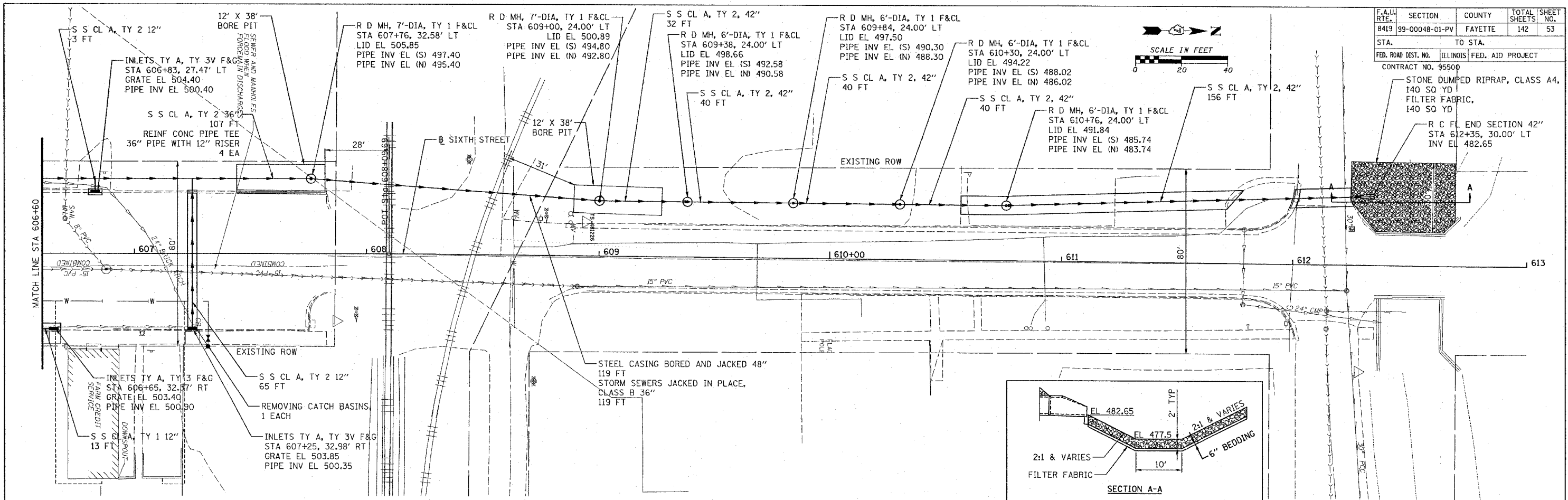


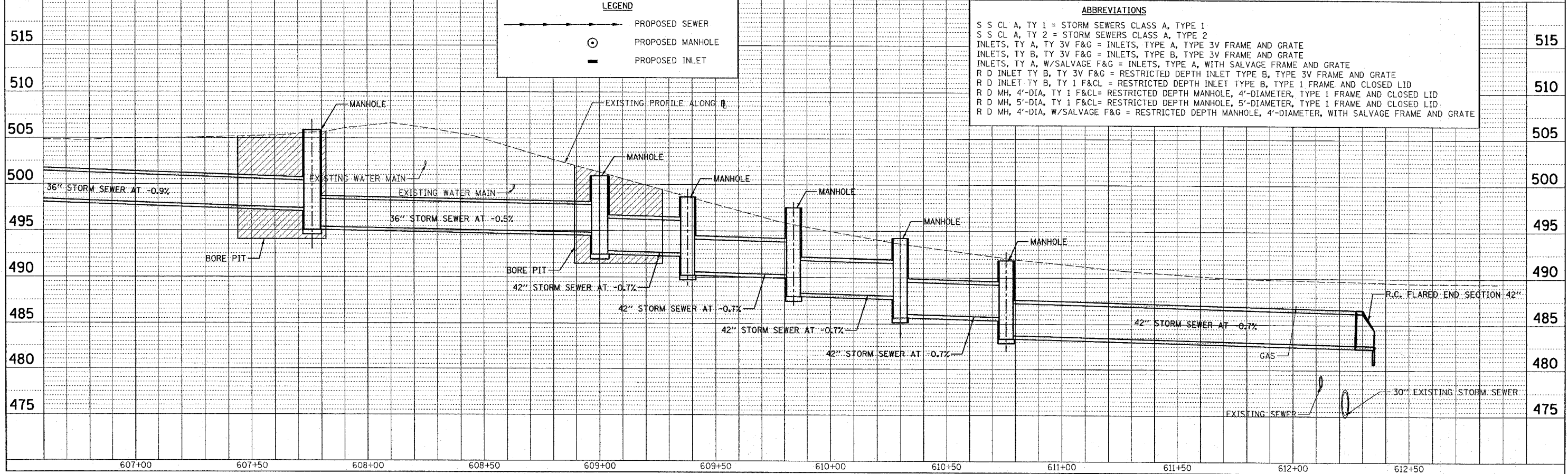
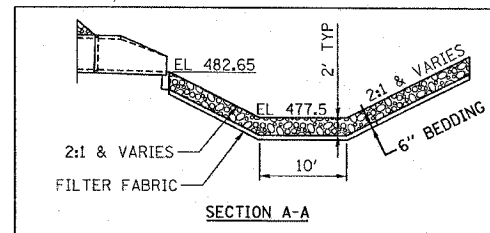
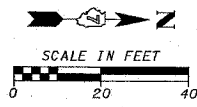
DATE	
BY	
PLAN	
DATE	
BY	
PROFILE	
DATE	
BY	

DATE	
BY	
PROFILE	
DATE	
BY	

CADD FILE: 14812/ss_S1rh_02.dgn
 PLOTTED: 01/23/2007



F.A.U. NO.	SECTION	COUNTY	TOTAL SHEETS
8419	99-00048-01-PV	FAYETTE	142
STA.	TO STA.		53
FED. ROAD DIST. NO.	ILLINOIS	FED. AID PROJECT	
CONTRACT NO. 95500			



LEGEND	
	PROPOSED SEWER
	PROPOSED MANHOLE
	PROPOSED INLET

ABBREVIATIONS	
S S CL A, TY 1	= STORM SEWERS CLASS A, TYPE 1
S S CL A, TY 2	= STORM SEWERS CLASS A, TYPE 2
INLETS, TY A, TY 3V F&G	= INLETS, TYPE A, TYPE 3V FRAME AND GRATE
INLETS, TY B, TY 3V F&G	= INLETS, TYPE B, TYPE 3V FRAME AND GRATE
INLETS, TY A, W/SALVAGE F&G	= INLETS, TYPE A, WITH SALVAGE FRAME AND GRATE
R D INLET TY B, TY 3V F&G	= RESTRICTED DEPTH INLET TYPE B, TYPE 3V FRAME AND GRATE
R D INLET TY B, TY 1 F&CL	= RESTRICTED DEPTH INLET TYPE B, TYPE 1 FRAME AND CLOSED LID
R D MH, 4'-DIA, TY 1 F&CL	= RESTRICTED DEPTH MANHOLE, 4'-DIAMETER, TYPE 1 FRAME AND CLOSED LID
R D MH, 5'-DIA, TY 1 F&CL	= RESTRICTED DEPTH MANHOLE, 5'-DIAMETER, TYPE 1 FRAME AND CLOSED LID
R D MH, 4'-DIA, W/SALVAGE F&G	= RESTRICTED DEPTH MANHOLE, 4'-DIAMETER, WITH SALVAGE FRAME AND GRATE