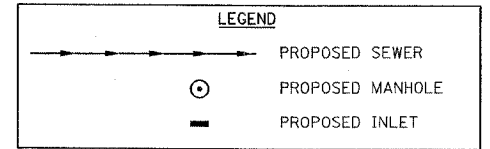
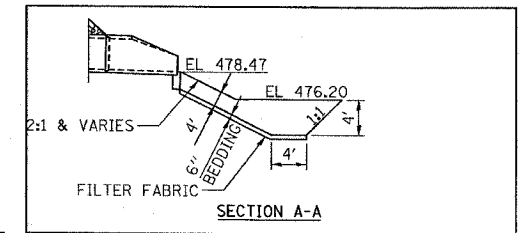
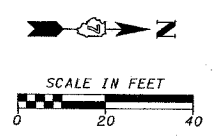
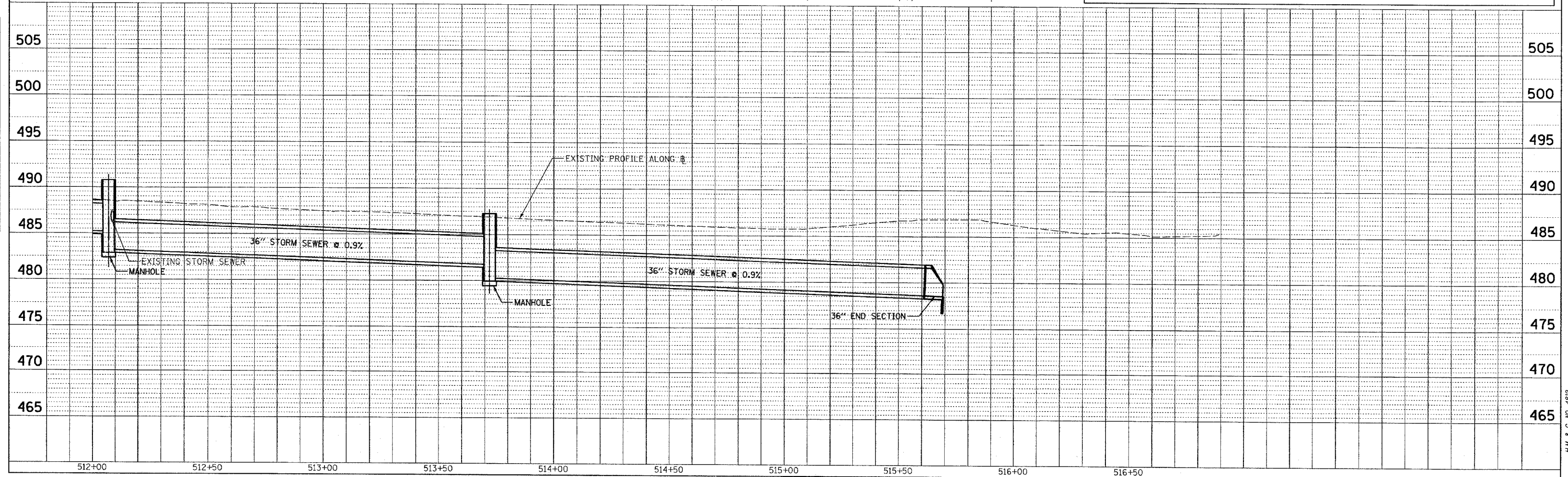
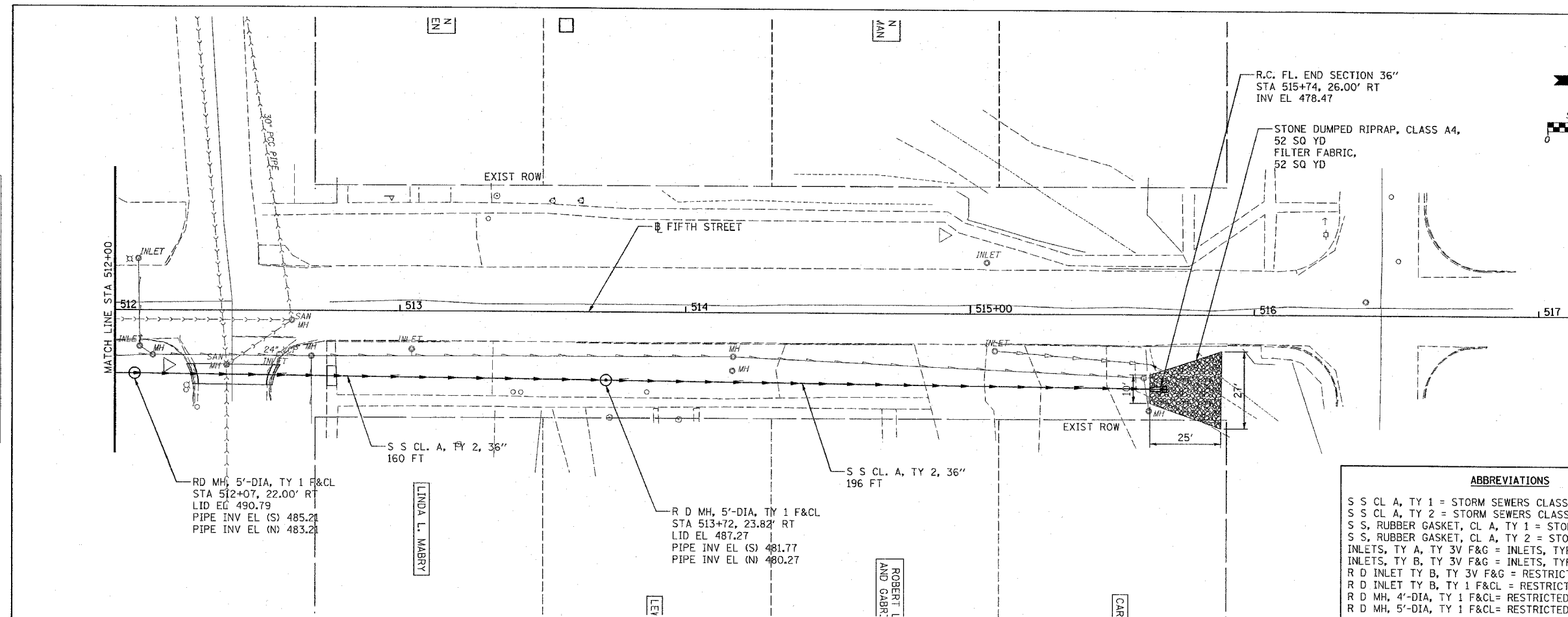


|                     |                |                  |              |           |
|---------------------|----------------|------------------|--------------|-----------|
| F.A.U. RTE.         | SECTION        | COUNTY           | TOTAL SHEETS | SHEET NO. |
| 8419                | 99-00048-01-PV | FAYETTE          | 142          | 56        |
| STA.                | TO STA.        |                  |              |           |
| FED. ROAD DIST. NO. | ILLINOIS       | FED. AID PROJECT |              |           |
| CONTRACT NO. 95500  |                |                  |              |           |



**ABBREVIATIONS**

S S CL A, TY 1 = STORM SEWERS CLASS A, TYPE 1  
 S S CL A, TY 2 = STORM SEWERS CLASS A, TYPE 2  
 S S, RUBBER GASKET, CL A, TY 1 = STORM SEWERS, RUBBER GASKET, CLASS A, TYPE 1  
 S S, RUBBER GASKET, CL A, TY 2 = STORM SEWERS, RUBBER GASKET, CLASS A, TYPE 2  
 INLETS, TY A, TY 3V F&G = INLETS, TYPE A, TYPE 3V FRAME AND GRATE  
 INLETS, TY B, TY 3V F&G = INLETS, TYPE B, TYPE 3V FRAME AND GRATE  
 R D INLET TY B, TY 3V F&G = RESTRICTED DEPTH INLET TYPE B, TYPE 3V FRAME AND GRATE  
 R D INLET TY B, TY 1 F&CL = RESTRICTED DEPTH INLET TYPE B, TYPE 1 FRAME AND CLOSED LID  
 R D MH, 4'-DIA, TY 1 F&CL = RESTRICTED DEPTH MANHOLE, 4'-DIAMETER, TYPE 1 FRAME AND CLOSED LID  
 R D MH, 5'-DIA, TY 1 F&CL = RESTRICTED DEPTH MANHOLE, 5'-DIAMETER, TYPE 1 FRAME AND CLOSED LID



PLAN

DATE: \_\_\_\_\_ BY: \_\_\_\_\_

REVISIONS:

NO. 1: \_\_\_\_\_

NO. 2: \_\_\_\_\_

NO. 3: \_\_\_\_\_

PROFILE

DATE: \_\_\_\_\_ BY: \_\_\_\_\_

REVISIONS:

NO. 1: \_\_\_\_\_

NO. 2: \_\_\_\_\_

NO. 3: \_\_\_\_\_

CADD FILE: /4812/rs.Fifth-03.dgn  
 PLOTTED: 01/23/2007