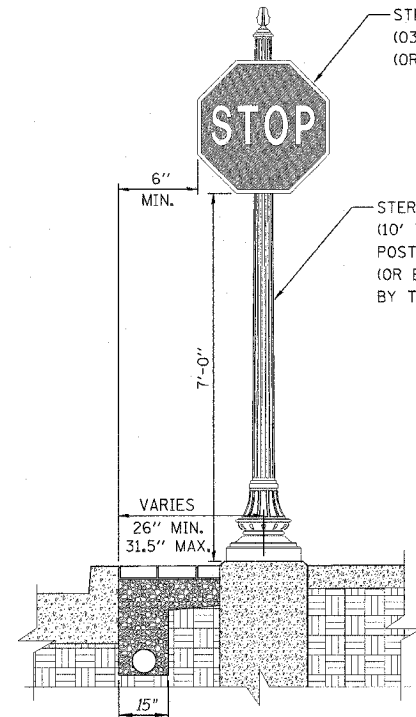
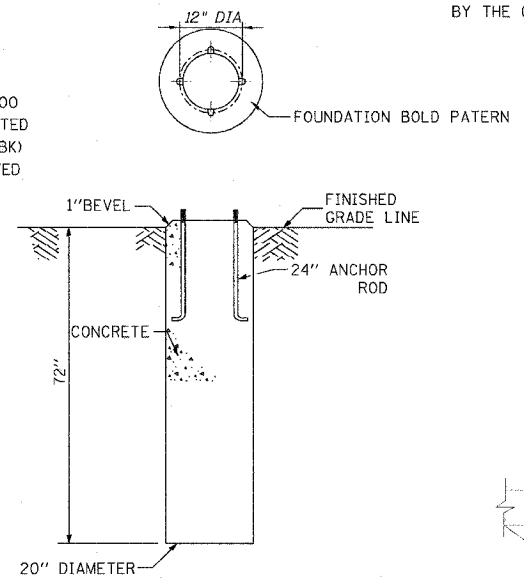


F.A.U. RTE.	SECTION	COUNTY	TOTAL SHEETS	SHEET NO.
8419	99-00048-01-PV	FAYETTE	142	90
STA.	TO STA.			
FED. ROAD DIST. NO.	ILLINOIS FED. AID PROJECT			
CONTRACT NO. 95500				

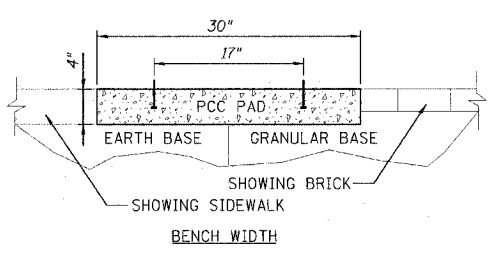
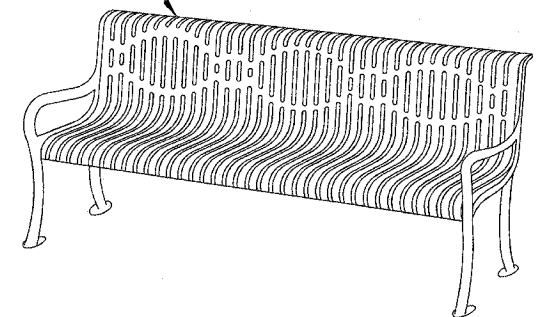


TRAFFIC SIGN POST

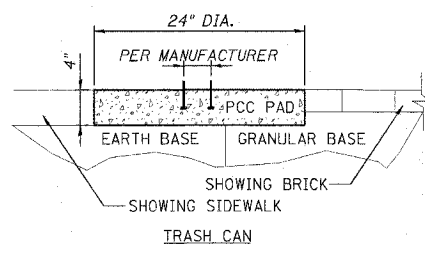


CONCRETE FOUNDATION

WABASH VALLEY 4' BLACK BENCH WITH BACK - RIB (CY400R) (OR EQUIVALENT APPROVED BY THE CITY)

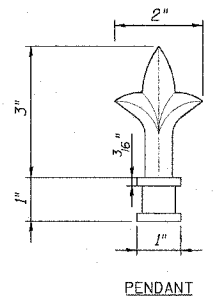
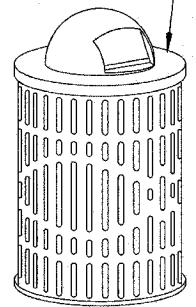


BENCH WIDTH

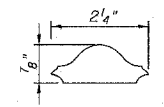


TRASH CAN

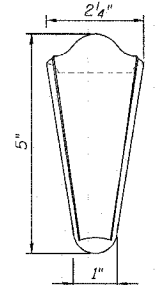
WABASH VALLEY 22 GALLON BLACK TRASH CAN (LR200R), BLACK DOME COVER (DT100N), SURFACE MOUNTS (LR105N), AND PLASTIC LINER (LR210N). (OR EQUIVALENT APPROVED BY THE CITY)



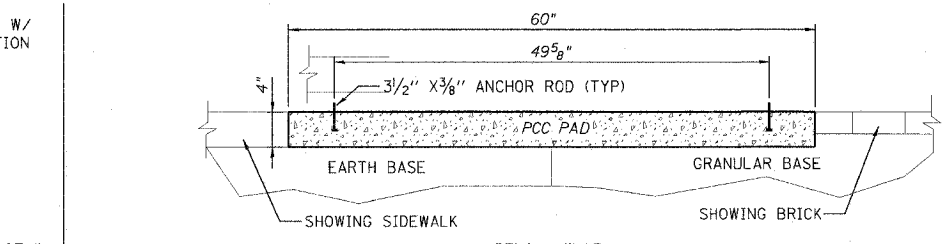
PENDANT



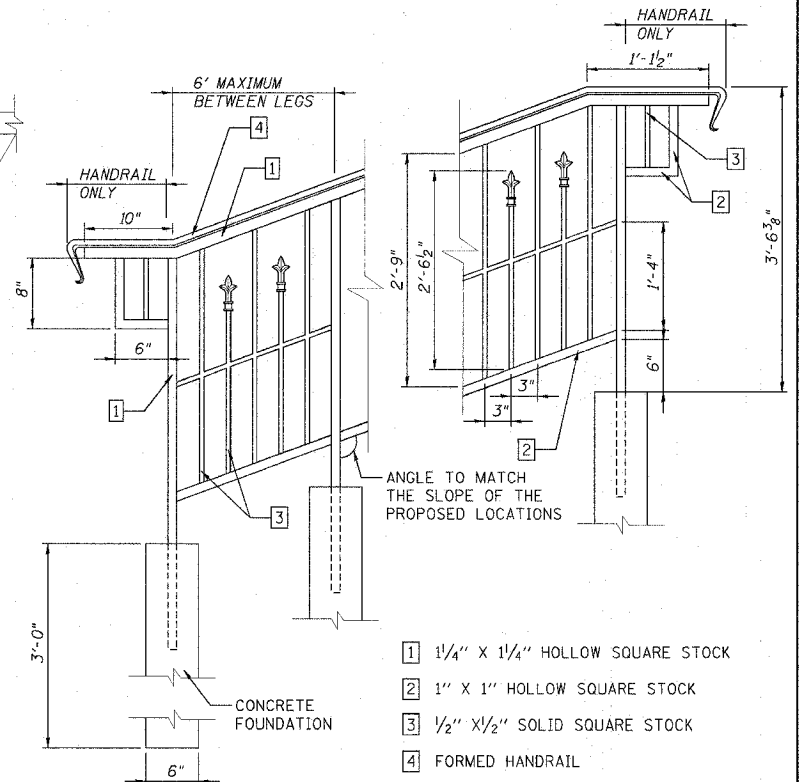
HANDGUIDE



HANDGUIDE END



BENCH & TRASH CAN MOUNTING SECTIONS



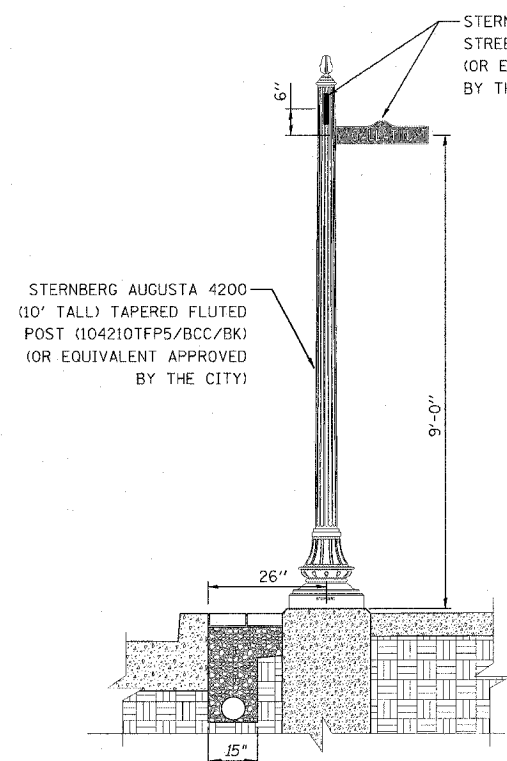
ORNAMENTAL HANDRAIL DETAIL

NOTES:
ORNAMENTAL HANDRAIL SHALL BE CONSTRUCTED TO THE GENERAL DIMENSIONS SHOWN AS TO AESTHETICALLY MATCH THE RAILING IN THE NORTHEAST QUADRANT OF THE STATE HOUSE PROPERTY. THE CONTRACTOR SHALL PROVIDE SAMPLE BUILDING MATERIALS FOR APPROVAL BEFORE FABRICATION.

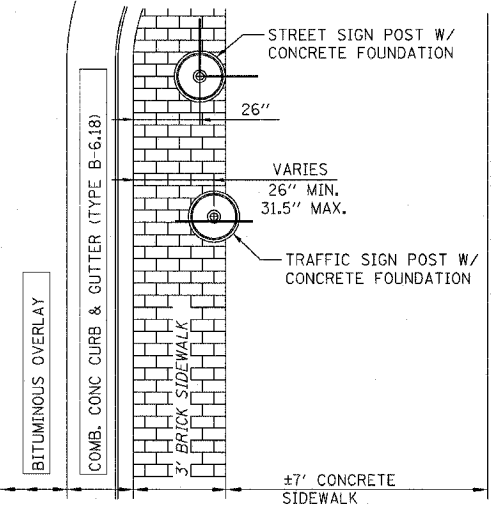
THE PORTION LABELED "HANDRAIL ONLY" IN THE DETAIL ABOVE WILL NOT BE REQUIRED BEHIND THE STORY BOARD.

THE CONTRACTOR SHALL PLACE THE HANDRAIL AT AN ELEVATION BEHIND THE STORYBOARD SO THAT IT DOES NOT EXCEED THE HEIGHT OF THE STORYBOARD. THE HEIGHT OF THE STORYBOARD IS APPROXIMATELY 3 FEET. GRADING MAY BE REQUIRED.

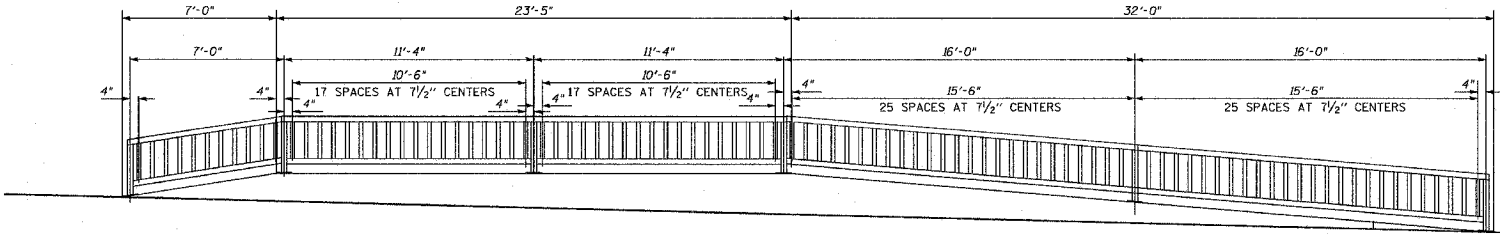
LEGS WITH FOUNDATIONS SHALL BE PLACED NO FARTHER THAN 6 FEET APART.



STREET SIGN POST



SIGN POST PLAN VIEW DETAIL



HANDRAIL ELEVATION

REVISIONS	
NAME	DATE
LDJ	5-09-07

ILLINOIS DEPARTMENT OF TRANSPORTATION
VANDALIA - GALLATIN STREET DETAILS

SCALE: VERT. HORIZ.
DATE: DRAWN BY KOJ CHECKED BY BWC

CADD FILE: 4812/DLI_decorative.dgn
PLOTTED: 5/9/2007

H.M. & G. NO. 4812