

ROUTE	SECTION	COUNTY	TOTAL SHEETS	SHEET NO.
F.A.S. 2710	05-00102-00-FP	JASPER	2	1
Contract # 95510		ILLINOIS	PROJECT RS-2710(101)	

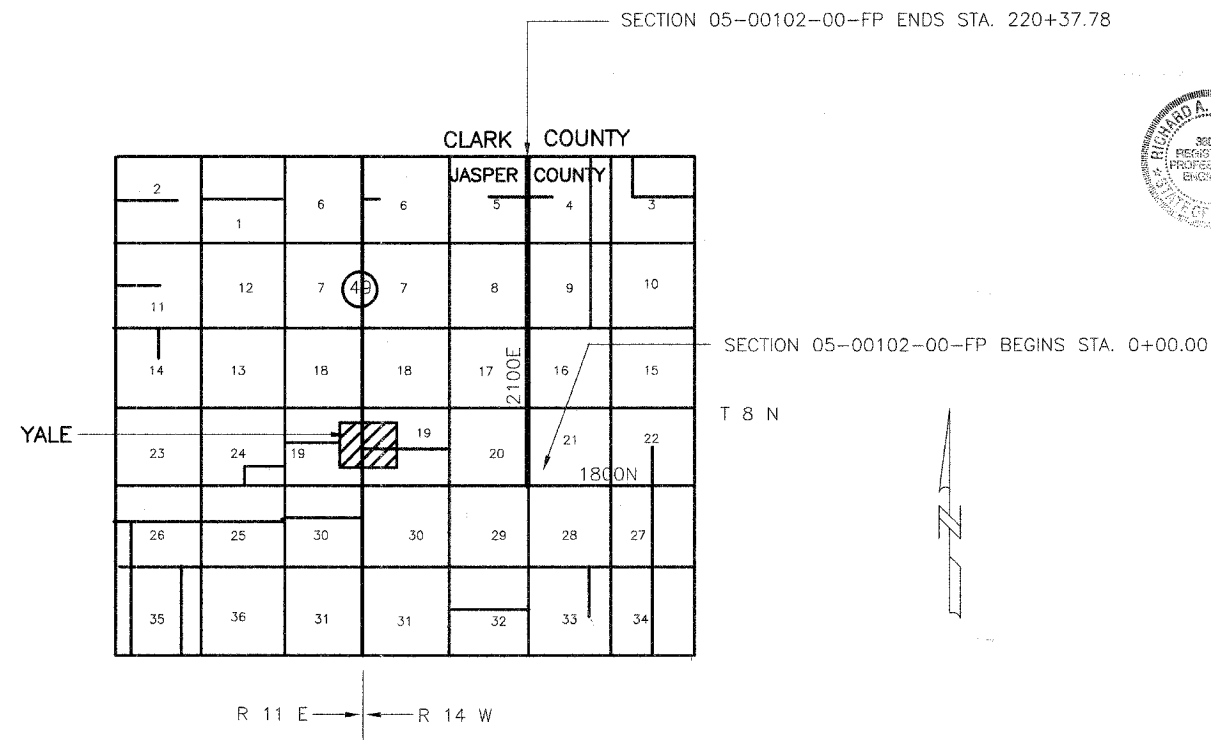
STATE OF ILLINOIS  
DEPARTMENT OF TRANSPORTATION  
DIVISION OF HIGHWAYS  
PLANS FOR PROPOSED  
FEDERAL AID SECONDARY PROJECT

JASPER COUNTY  
SECTION 05-00102-00-FP  
F.A.S. 2710  
COUNTY HIGHWAY 20  
JOB NO. C-97-020-07  
PROJECT NO. RS-2710(101)

INDEX OF SHEETS

SHEET	ITEM
1	COVER SHEET
2	SUMMARY OF QUANTITIES
	STANDARD 000001-04
	STANDARD 702001-06
	BLR-22-4

THESE PLANS WERE PREPARED BY ME, OR A FULL TIME MEMBER OF MY STAFF, WORKING UNDER MY PERSONAL SUPERVISION.



*Richard A. Patterson* 4-3-07  
ILLINOIS REG. PROF. ENG. 38893 DATE  
LICENSE EXPIRES 11/30/07  
12871 EAST STATE HWY 33  
NEWTON, ILLINOIS 62448  
PHONE 618-783-2915

APPROVED 4-3 2007

*Richard A. Patterson*  
COUNTY ENGINEER

PASSED 4/10 2007

*Mamuel East*  
DISTRICT SEVEN ENGINEER OF  
LOCAL ROADS & STREETS

Releasing For Bid Based on Limited Review 4/10 2007

*Christ M. Keefe*  
DEPUTY DIRECTOR OF HIGHWAYS,  
REGION FOUR ENGINEER

STATE OF ILLINOIS  
DEPARTMENT OF TRANSPORTATION

RURAL MINOR COLLECTOR  
ADT = 250  
DESIGN SPEED = 40 MPH

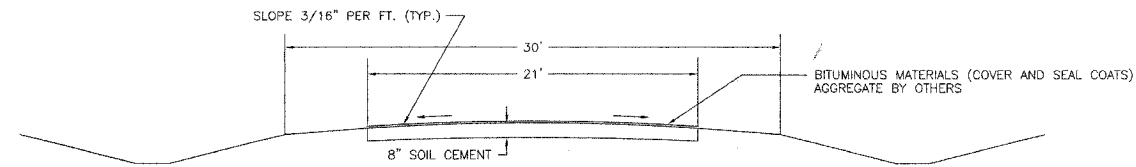
CONTRACT NO. 95510

Joint Utility Locating Information for Excavators  
JULIE 1-800-892-0123

GROSS LENGTH SECTION 05-00102-00-FP = 22,037.78 Ft. = 4.174 Mi.

ROUTE	SECTION	COUNTY	TOTAL SHEETS	SHEET NO.
F.A.S. 2710	05-00102-00-FP	JASPER	2	2
CONTRACT NO. 95510		ILLINOIS	PROJECT RS-2710(101)	

TYPICAL SECTION OF PROPOSED IMPROVEMENT

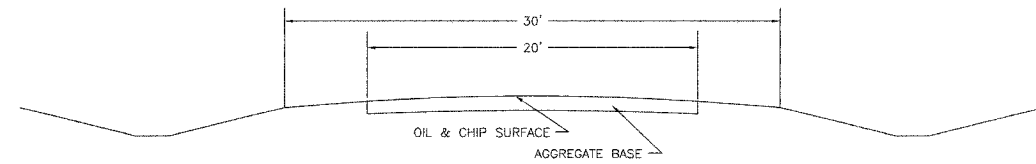


STA. 0+00.0 TO STA. 220+37.78

PAVEMENT DESIGN DATA

CLASS IV ROAD  
 STRUCTURAL DESIGN TRAFFIC (S.D.T.) 2026 PC = 308  
 SU = 32  
 MU = 11  
 MINIMUM SOIL SUPPORT: I.B.U. = 3  
 PERCENT OF S.D.T. IN TRAFFIC LANE P = 50%  
 S = 50%  
 M = 50%  
 TRAFFIC FACTOR = 0.051  
 STRUCTURAL NUMBER = 2.15  
 PAVEMENT STRUCTURE MATERIALS:  
 STAGE 1 - 8" SOIL-CEMENT BASE COURSE (500 PSI MIN.)  
 A-2 SEAL COAT (AGGREGATE BY OTHERS)  
 STAGE 2 - 2" CLASS 1 21' WIDE (FUTURE)

TYPICAL SECTION OF EXISTING ROAD



STA. 0+00.0 TO STA. 220+37.78

SECTION 05-00102-00-FP  
 SUMMARY OF QUANTITIES

QUANTITY	UNIT	ITEM	CODE NUMBER
51,422	SQ. YD.	PROCESSING SOIL-CEMENT BASE COURSE 8"	35200300
33,907	100 WT.	CEMENT	35200500
30,853	GALLON	BITUMINOUS MATERIALS (COVER AND SEAL COATS)	40300300
1	LUMP SUM	MOBILIZATION	67100100