

BENCHMARK:

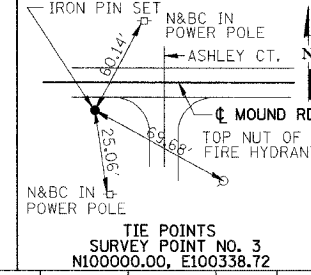
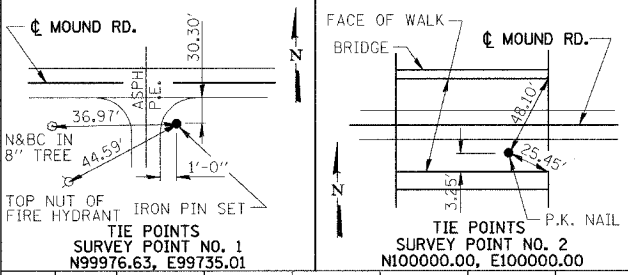
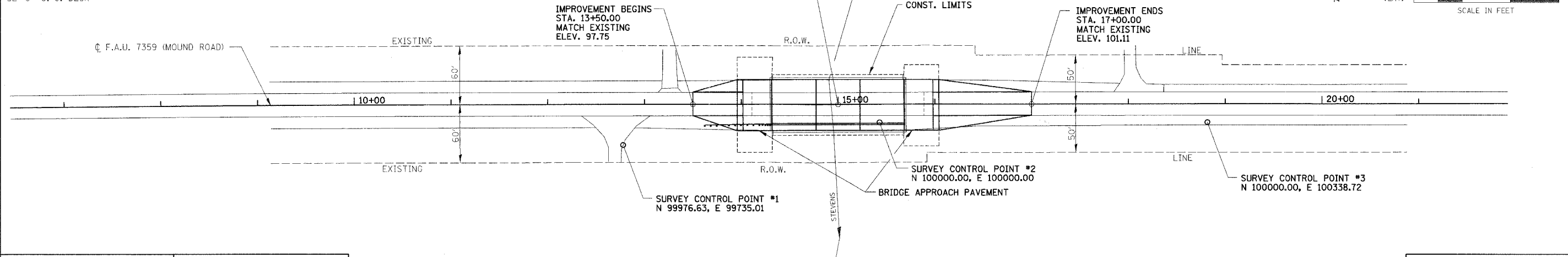
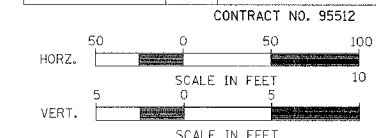
"M" IN MUELLER ON FIRE HYDRANT AT SERVICE ROAD
SOUTHWEST OF BRIDGE.
ELEV. 100.00

STRUCTURE NO. 058-3062

THREE SPAN CONCRETE DECK BEAM SUPERSTRUCTURE ON
SPILL-THRU CONCRETE PILE BENT ABUTMENTS AND
SOLID CONCRETE PIERS ON TIMBER PILES.
137'-6" BK.-BK. ABUTMENTS
52'-0" O.-O. DECK

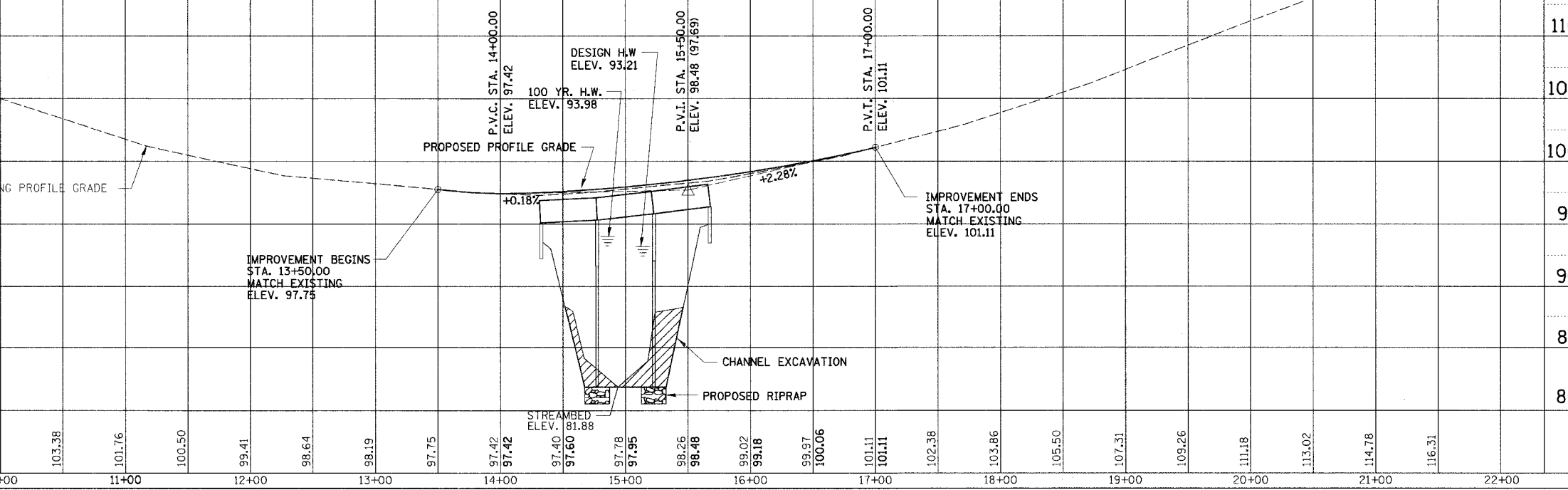
STA. 15+00.00
PRECAST CONCRETE DECK BEAM SUPERSTRUCTURE
THREE SPANS AT 44'-9 1/2", 45'-5", 44'-9 1/2"
BACK TO BACK OF ABUTMENTS (EXISTING) 137'-6"
O - O DECK = 51'-0"
FACE OF RAIL TO FACE OF PARAPET 43'-5"
0° SKEW

RTE.	SECTION	COUNTY	TOTAL SHEETS	SHEET NO.
FAU 1359	09-00702-00-BR	MACON	12	3
STA. 13+50.00		TO STA. 17+00.00		
FED. ROAD DIST. NO.	ILLINOIS	PROJECT:	DHM-5189(37)	
CONTRACT NO. 95512				



EARTHWORK SUMMARY	
120	EARTH EXCAVATION = 162 CU. YD. (UNSUITABLE) CHANNEL EXCAVATION = 370 CU. YD. FURNISHED EXCAVATION = 0 CU. YD.
115	FOR INFORMATION ONLY MATERIAL REQUIRED FOR EMBANKMENT (NOT A PAY ITEM) = 134 CU. YD. FURNISHED EXCAVATION REQUIRED = 134 - (370) (0.75 SHRINKAGE) = 0 CU. YD.
95	SEEDING, CLASS 2 AREAS ON APPROACH PAVEMENT EMBANKMENT SLOPES TOTAL = 0.25 ACRES
90	NITROGEN FERTILIZER NUTRIENT TOTAL = 23 POUNDS
85	PHOSPHORUS FERTILIZER NUTRIENT TOTAL = 23 POUNDS
80	POTASSIUM FERTILIZER NUTRIENT TOTAL = 23 POUNDS
	MULCH, METHOD 2 TOTAL = 0.25 ACRES

TRAFFIC BARRIER TERMINAL, TYPE 5R (SPECIAL)	SW QUADRANT	1 EACH
TRAFFIC BARRIER TERMINAL TYPE 1, SPECIAL (TANGENT)	SW QUADRANT	1 EACH
TERMINAL MARKER - DIRECT APPLIED	SW QUADRANT	1 EACH



DATE	BY	REVISION

DATE	BY	REVISION