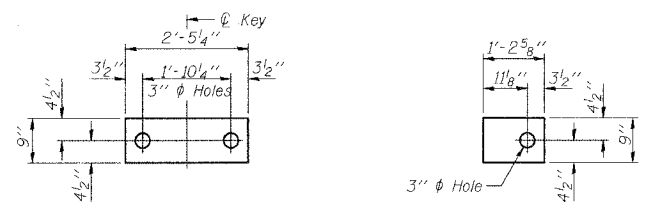
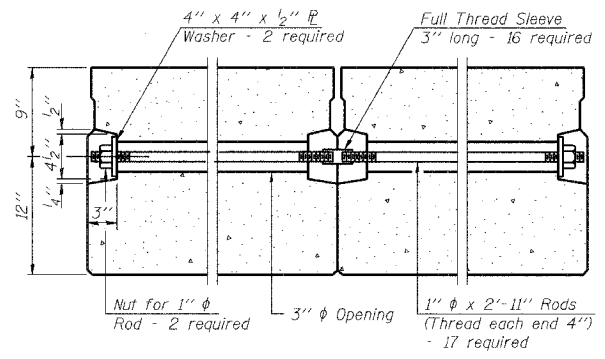


ROUTE NO.	SECTION	COUNTY	TOTAL SHEETS	SHEET NO.
F.A.U. 7359	09-00702-00-BR	MACON	12	5
FED. ROAD DIST. NO.	ILLINOIS PROJECT BHM-5169(37)		CONTRACT NO. 95512	

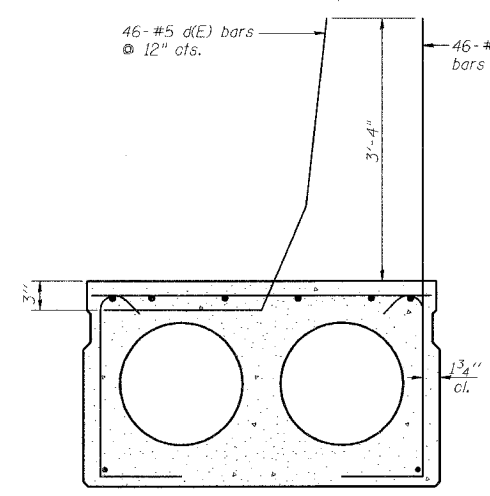


FABRIC BEARING PAD
(Interior) **FABRIC BEARING PAD**
(Exterior)

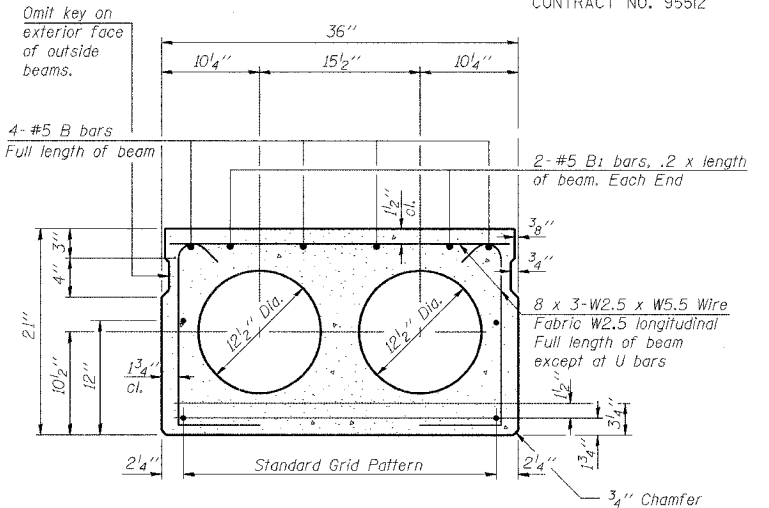
FIXED



TYPICAL TRANSVERSE TIE ASSEMBLY

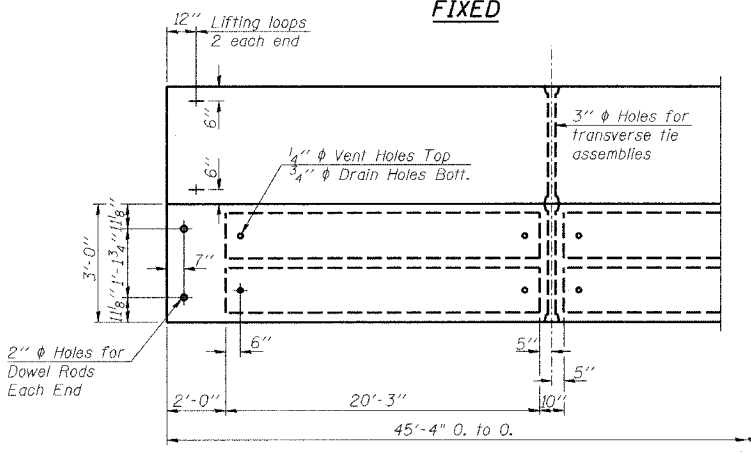


PARAPET BEAM TYPICAL SECTION
(Reinforcement, Strand Pattern, and Dimensions same as other Typical Section shown)

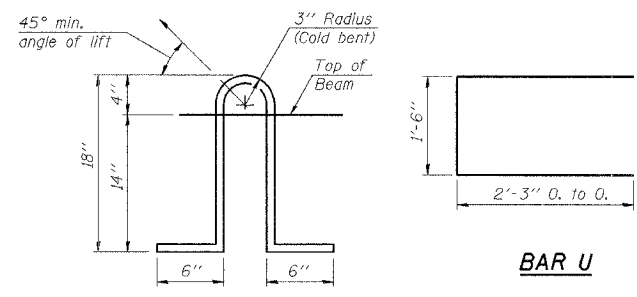


TYPICAL SECTION

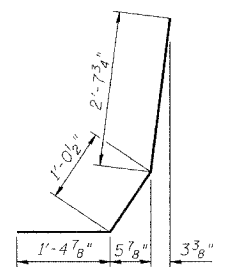
1/2" ϕ Strands, Each Strand Stressed to 30,900 Lbs.
6-Strands 1 3/4" up, 8-Strands 3/4" up, and 2-Strands 12" up.
Note: Place strands symmetrically about ϕ of beam.



PLAN



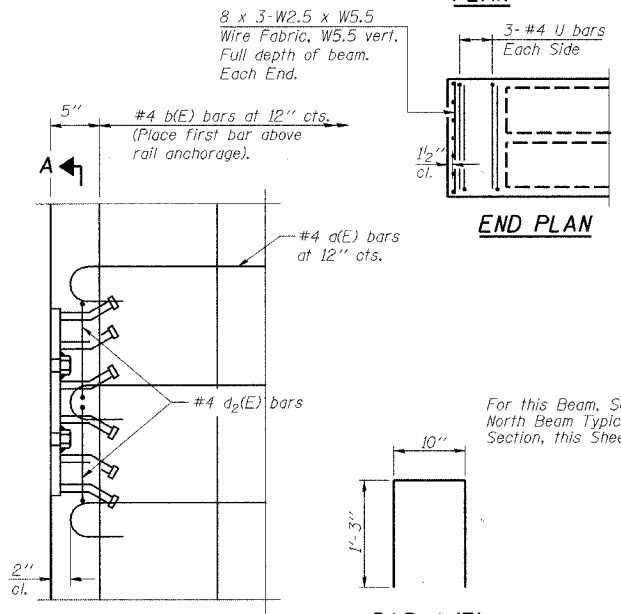
LIFTING LOOP DETAIL



BAR U

BAR d1(E)
(138 Required)

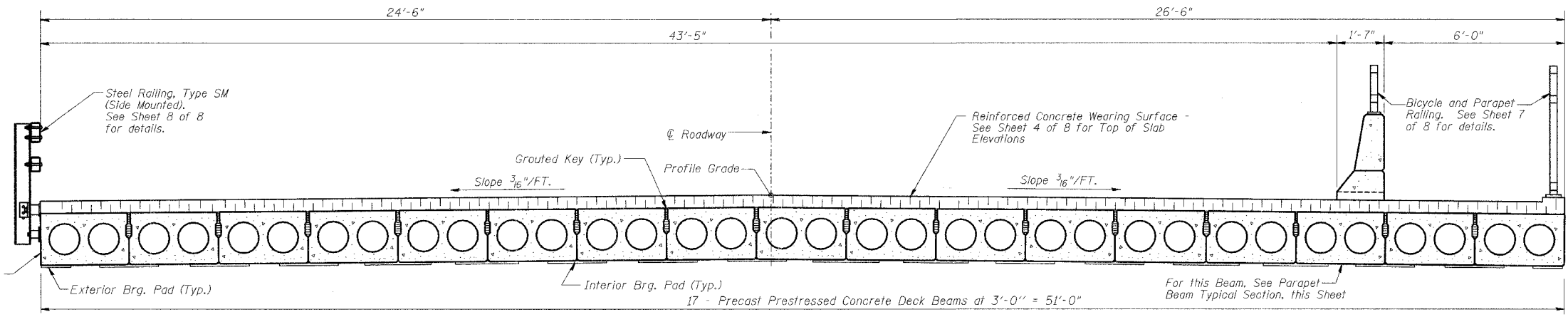
BAR d1(E)
(138 Required)



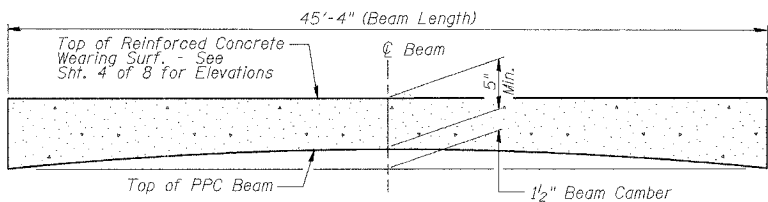
END PLAN

PLAN - NORTH BEAM

BAR d2(E)
(46 Required)



CROSS SECTION
(Looking East)



ANTICIPATED CAMBER DIAGRAM
(See Sheet 4 of 8 for Wearing Surface Profile and Top of Slab Elevations)

BILL OF MATERIAL

Bar	No.	Size	Length	Shape
Precast Prestressed Conc. Deck Bms. (21')			Sq. Ft. 69.36	

NOTES

Prestressing steel shall be uncoated high strength, low relaxation 7-wire strand, Grade 270. The nominal diameter shall be 1/2" and the nominal cross-sectional area shall be 0.153 sq. in. Lifting loops shall be 2 - 1/2" ϕ - 270 ksi strands, as shown. The 1" rods in the transverse tie assembly shall be tightened to a snug fit and the threads set. Pockets that receive transverse tie bar on outside shall be filled with grout after transverse tie assembly is in place. Non prestressing steel shall conform to AASHTO M-31 or M-322 Grade 60. The bearing seat surfaces shall be adjusted by shimming to assure firm and even bearing. Two 1/2" fabric adjusting shims of the dimensions of the Exterior Bearing Pad shall be provided for each bearing. Keyway surfaces shall be cleaned to remove form oil or other bond breaking material prior to shipment of the beams. Cleaning shall be done by sandblasting the keyway areas between top of the beam and the bottom edge of the key. Corrosion Inhibitor, as covered in the Special Provisions, shall be used in the concrete for precast prestressed concrete deck beams. Required Release Strength, f'ci, shall be 4000 p.s.i. For the North Beam, the rail anchorage shall be cast with the beam and the wearing surface shall be cast in the field. Formwork necessary for the wearing surface may be secured utilizing the bottom rail anchorage inserts and/or additional inserts cast into the beam. Drilling into the beam will not be permitted.

SUPERSTRUCTURE - ALL SPANS

Date	Designed DCS	F.A.U. 7359 (MOUND RD.) OVER STEVENS CREEK CITY OF DECATUR STA. 15+00.00 PROP. STR. NO. 058-3062	Sheet No.
Revisions	Drawn BKN		2
	Checked TDN		
	Approved KWB		
Prepared by: URS	345 East Ash Avenue Decatur, IL 62526		