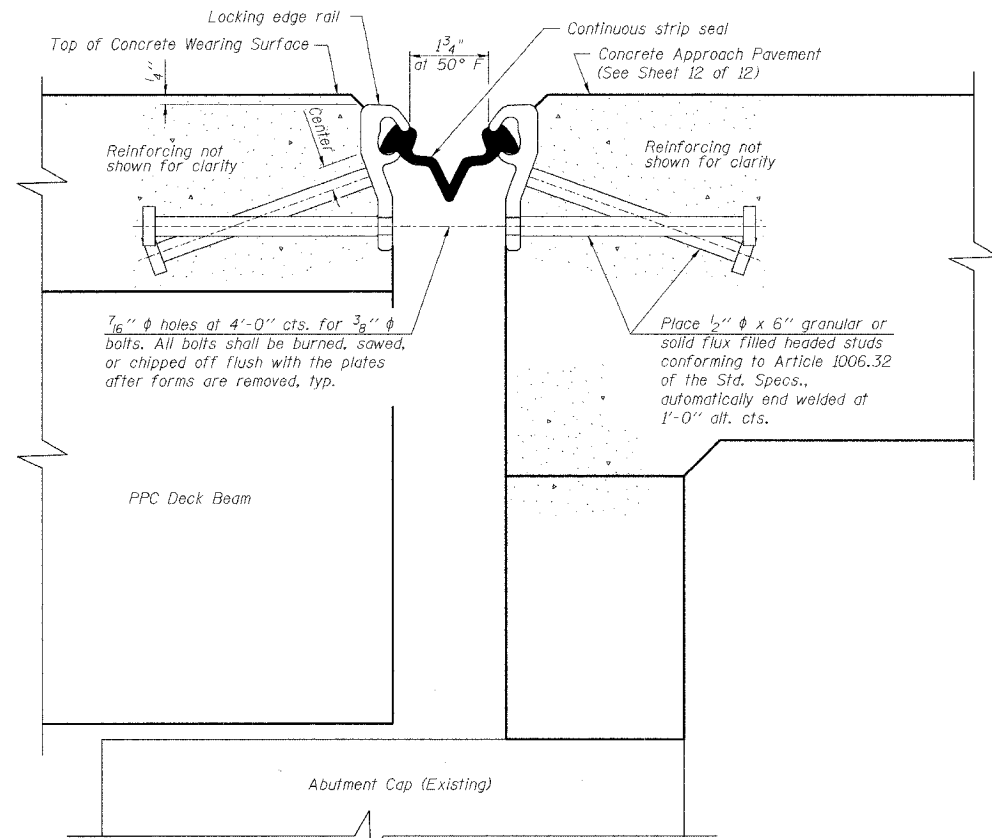
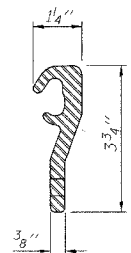


| | | | | |
|---------------------|----------------|-------------------------------|--------------------|-----------|
| ROUTE NO. | SECTION | COUNTY | TOTAL SHEETS | SHEET NO. |
| F.A.U. 7359 | 09-00702-00-BR | MACON | 12 | 8 |
| FED. ROAD DIST. NO. | | ILLINOIS PROJECT BHM-5163(37) | CONTRACT NO. 95512 | |

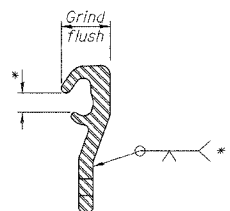


SECTION A-A
SECTION THRU STRIP SEAL JOINT
FOR OVERLAY OVER DECK BEAMS

(For section location see sheet 3 of 8)



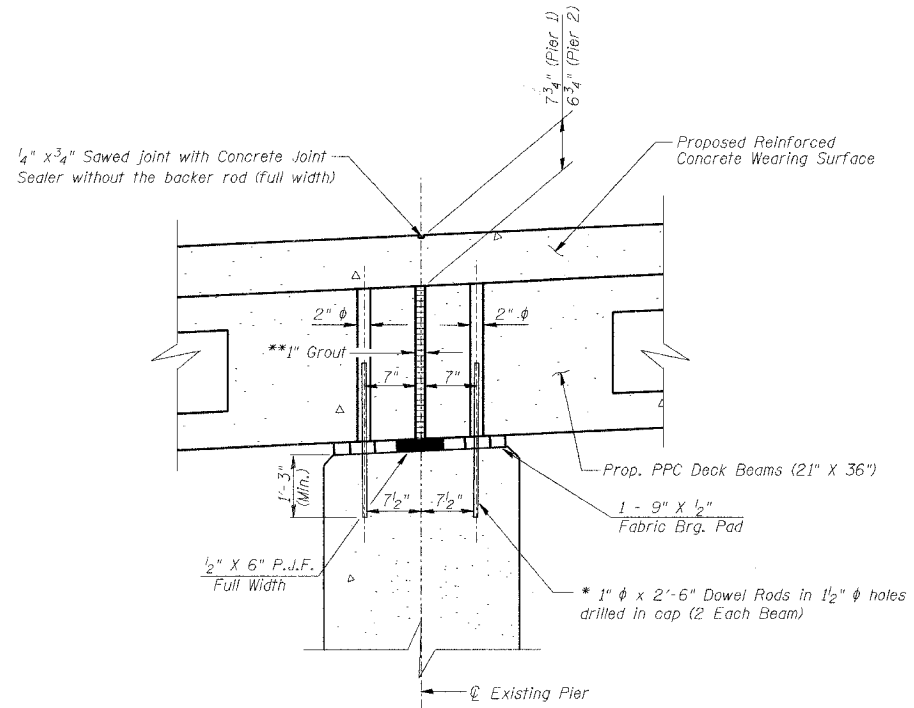
LOCKING EDGE RAIL



LOCKING EDGE RAIL SPLICE

Notes:
The strip seal shall be made continuous and shall have a minimum thickness of 1/4". The configuration of the strip seal shall match the configuration of the Locking Edge Rails.
The height and thickness of the Locking Edge Rails shown are minimum dimensions. The actual configuration of the Locking Edge Rails and matching strip seal may vary from manufacturer to manufacturer. Flanged edge rails will not be allowed.
The inside of the Locking Edge Rail groove shall be free of weld residue.
Locking Edge Rails may be spliced at slope discontinuities and stage construction joints.
The manufacturer's recommended installation methods shall be followed.

SECTION THRU JOINT AT ABUTMENT



SECTION THRU PIER

(At Rt. Angles)
*After the beams are in place, 1/2" diameter holes shall be drilled into the bridge seat, and the dowel rods grouted and allowed to cure (min. 24 hrs.) prior to grouting the shear keys. The grout shall be an approved non-shrink grout.
**1" Joint shall be filled with an approved non-shrink grout in place and allowed to cure 24 hrs. 1" dimension may vary plus or minus to accommodate tolerance in beam lengths.
Before new beams are set, any remaining dowel rods are to be cut off flush with top surface of pier cap.

EXPANSION JOINT QUANTITY

| Item | Unit | Quantity |
|-------------------------------------|------|----------|
| Strip Seal Expansion Joint Assembly | Foot | 102 |

JOINT DETAILS

| | | | |
|--------------|---|---|-------------------------|
| Date | Designed DCS | F.A.U. 7359 (MOUND RD.) OVER STEVENS CREEK CITY OF DECATUR STA. 15+00.00 PROP. STR. NO. 058-3062 | Sheet No. |
| Revisions | Drawn BKN | | 5 |
| | Checked TDN | | |
| | Approved KWB | | |
| Prepared by: | URS 345 East Ash Avenue Decatur, IL 62526 | | |
| | | | URS Job No. 36431697 |