

STATE OF ILLINOIS
DEPARTMENT OF TRANSPORTATION

PLANS FOR PROPOSED
HIGHWAY BRIDGE PROGRAM

TR 293 (REDWOOD LANE)
SECTION 96-10120-01-BR
OVER CN / IC RAILROAD
SONGER ROAD DISTRICT
PROJECT NO. BROS-025(57)
CLAY COUNTY
C-97-052-05

ROUTE	SECTION	COUNTY	TOTAL SHEETS	SHEET NO.
TR 293	96-10120-01-BR	CLAY	13	1
FED. ROAD DIST. NO. 7 ILLINOIS		FEDERAL AID PROJECT		
CONTRACT NO. 95514				

INDEX OF SHEETS

- 1 TITLE SHEET
- 2 SUMMARY OF QUANTITIES, TYPICAL SECTIONS, AND GENERAL NOTES
- 3 PLAN & PROFILE OF ROADWAY
- 4 EROSION CONTROL PLAN
- 5-6 CROSS SECTIONS OF ROADWAY
- 7 CROSS SECTIONS OF RAILROAD
- 8 GENERAL PLAN AND ELEVATION
- 9-10 PRECAST PRESTRESSED CONCRETE DECK BEAM DETAILS
- 11 STEEL RAILING, TYPE S1 (SPECIAL) DETAILS
- 12 ABUTMENT AND WINGWALL DETAILS
- 13 PIER DETAILS

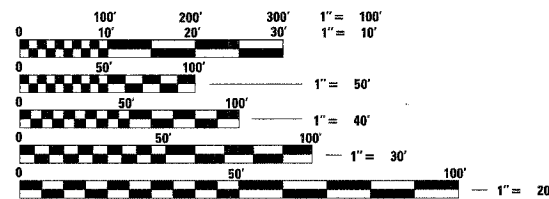
STANDARDS SHOWN BELOW ARE INCLUDED IN THE PLANS AFTER SHEET NO. 13

- STD. NO. 000001-04 SYMBOLS AND ABBREVIATIONS
- STD. NO. 280001-03 TEMPORARY EROSION CONTROL SYSTEMS
- STD. NO. 515001-02 NAME PLATE FOR BRIDGES
- STD. NO. 630301-04 SHOULDER WIDENING FOR TYPE 1 (SPECIAL) GUARDRAIL TERMINALS
- STD. NO. 631026-03 TRAFFIC BARRIER TERMINAL TYPE 5
- STD. NO. 635006-02 REFLECTOR AND TERMINAL MARKER PLACEMENT
- STD. NO. 702001-06 TRAFFIC CONTROL DEVICES
- STD. NO. BLR 21-6 TYPICAL APPLICATION OF TRAFFIC CONTROL DEVICES FOR CONSTRUCTION ON RURAL LOCAL HIGHWAYS

SOIL BORINGS (INCLUDED IN PROJECT SPECIFICATIONS)

DESIGN CLASSIFICATION: RURAL LOCAL ROAD

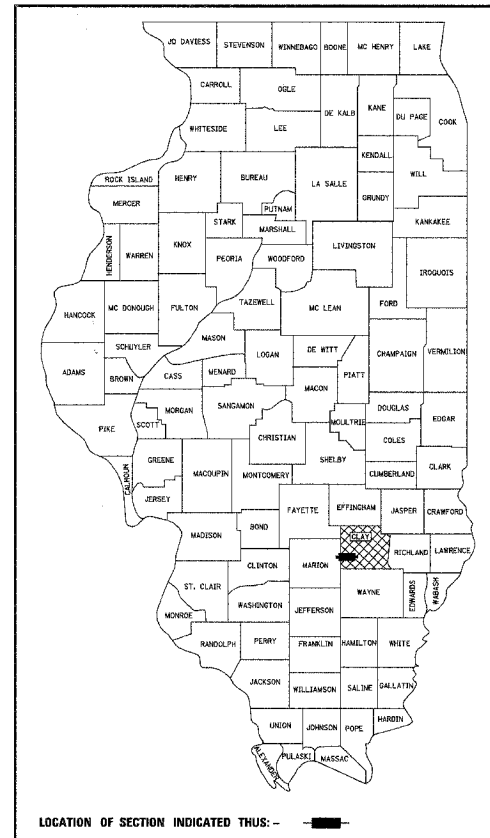
ADT₂₀₀₇ : 50
ADT₂₀₂₇ : 75
DESIGN SPEED - 30 MPH



FULL SIZE PLANS HAVE BEEN PREPARED USING STANDARD ENGINEERING SCALES, REDUCED SIZED PLANS WILL NOT CONFORM TO STANDARD SCALES, IN MAKING MEASUREMENTS ON REDUCED PLANS, THE ABOVE SCALES MAY BE USED.

J.U.L.I.E.
JOINT UTILITY LOCATING INFORMATION FOR EXCAVATORS
1-800-892-0123 Website: <http://www.illinoiscall.com>

CONTRACT NUMBER 95514



LOCATION OF SECTION INDICATED THIS: -

APPROVED FOR CLEARANCE ONLY MARCH 2, 2007
JOHN M. HENRIKSEN
MANAGER OF PUBLIC WORKS
CANADIAN NATIONAL RAILROAD

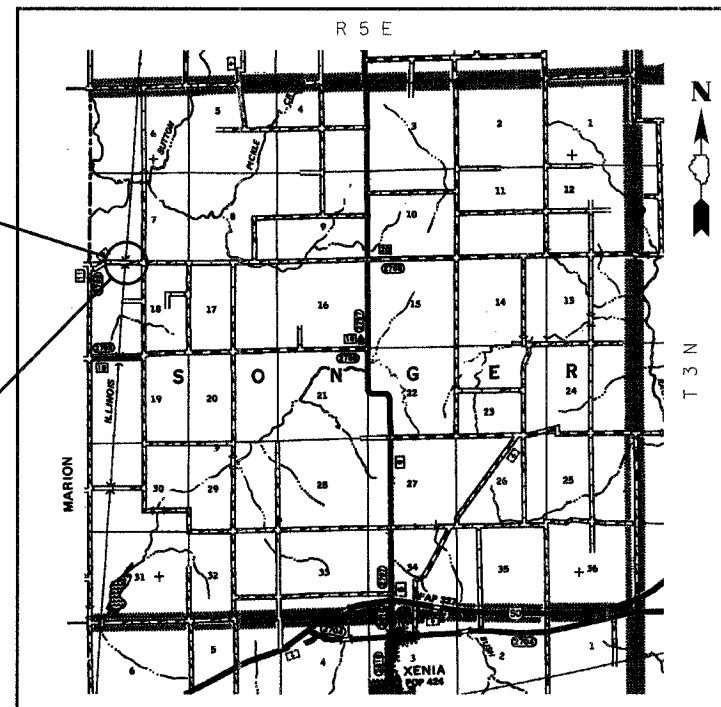
STATE OF ILLINOIS
DEPARTMENT OF TRANSPORTATION
APPROVED APRIL 4, 2007
CLAY COUNTY, COUNTY ENGINEER

PASSED 4/11, 2007
Maureen O'Keefe
DISTRICT SEVEN ENGINEER OF LOCAL ROADS & STREETS

RELEASING FOR BID BASED ON LIMITED REVIEW 4/11, 2007
Christie M. Redden
DEPUTY DIRECTOR OF HIGHWAYS, REGION FOUR ENGINEER



Gary L. Hahn 04.03.07
GARY L. HAHN
CENTRALIA, ILLINOIS
ILLINOIS LICENSED PROFESSIONAL
ENGINEER NO. 62-42606
EXPIRES NOV. 30, 2007



SECTION 96-10120-01-BR INCLUDES THE REMOVAL OF AN EXISTING SEVEN-SPAN TIMBER BRIDGE AND CONSTRUCTION OF A THREE (3) SPAN BRIDGE WITH PPCDB SUPERSTRUCTURE CARRYING TR 293 OVER THE CN/IC RR. 150'-6" BK.-BK. ABUTMENTS 24'-0" OUT TO OUT DECK. 0° SKEW. EXISTING S.N. 013-9913 PROPOSED S.N. 013-9918

LOCATION: NEAR THE NW CORNER, NE 1/4, NW 1/4, SECTION 18, T3N, R5E, 3RD P.M.
NET LENGTH OF SECTION 96-10120-01-BR: 1150.00 FT = 0.218 MI

RHUTASEL and ASSOCIATES, INC.
CONSULTING ENGINEERS • LAND SURVEYORS
CENTRALIA, ILLINOIS FREEBURG, ILLINOIS
ILLINOIS DESIGN FIRM LICENSE NO. 184-000287

Sheet
1
of 13
Job No. 51005