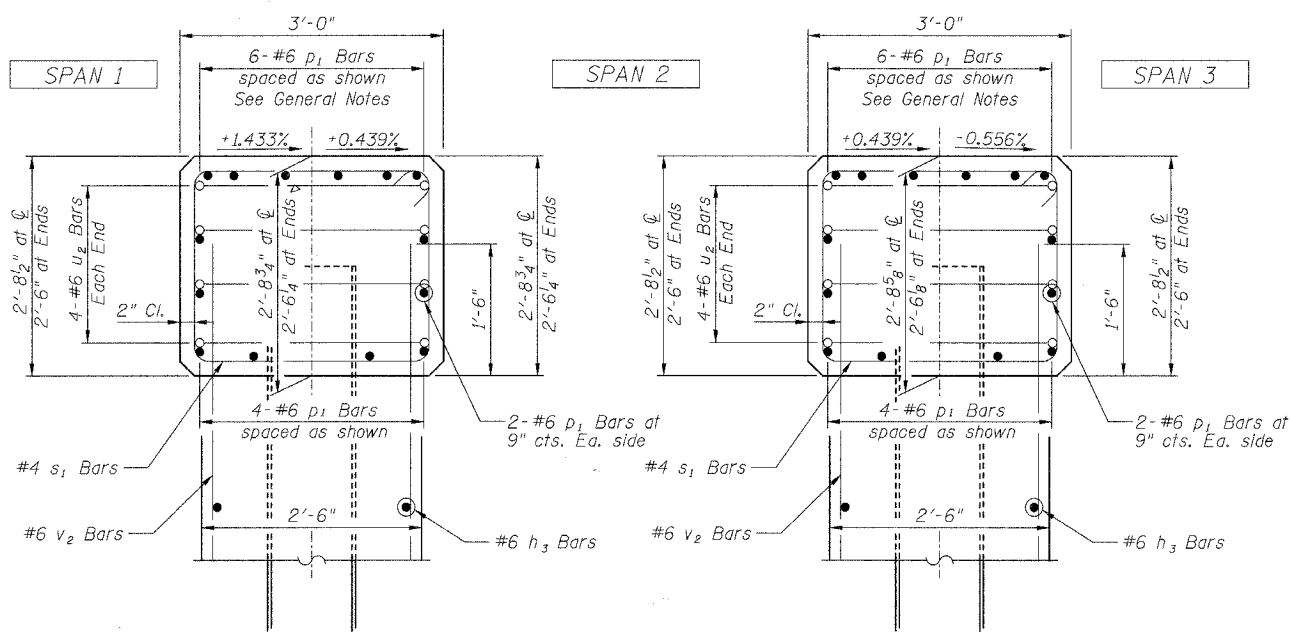
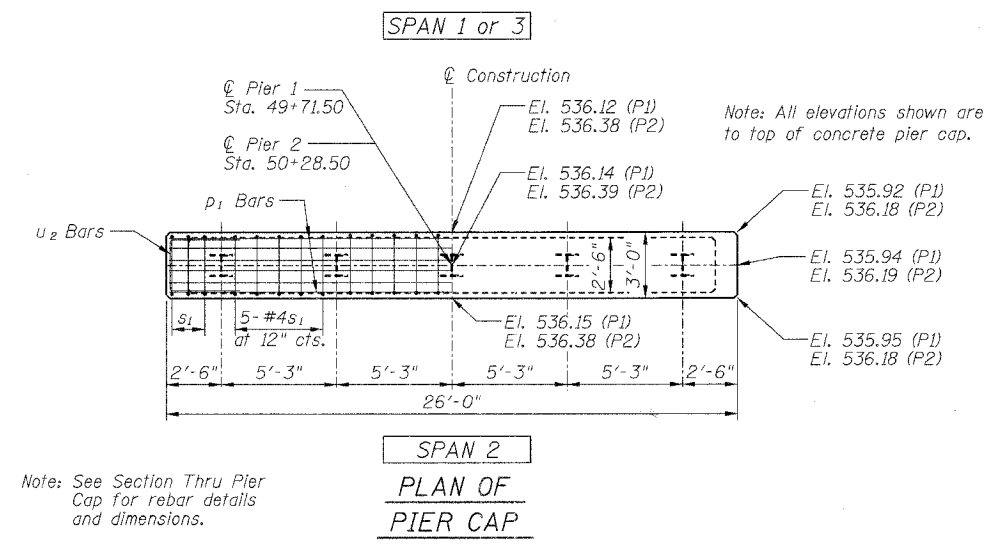


ROUTE	SECTION	COUNTY	TOTAL SHEETS	SHEET NO.
TR 293	96-10120-01-BR	CLAY	13	13
FED. ROAD DIST. NO. 7	ILLINOIS	FEDERAL AID PROJECT		
CONTRACT NO. 95514				



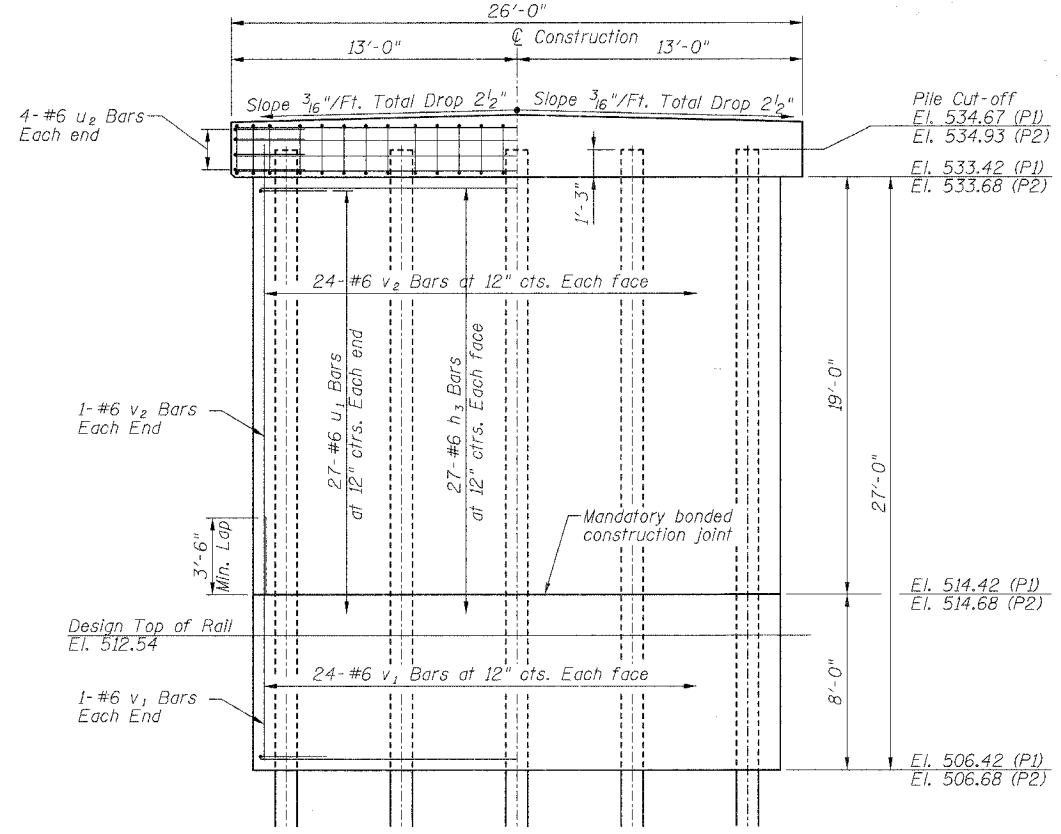
SECTION THRU PIER 1 CAP

SECTION THRU PIER 2 CAP

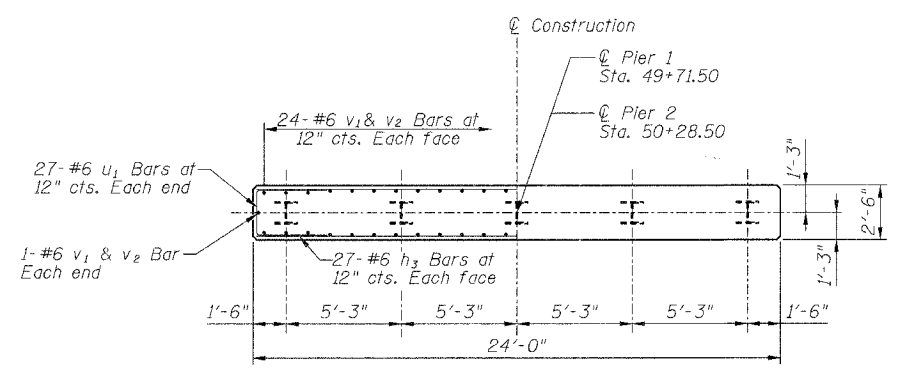


PLAN OF PIER CAP

Note: See Section Thru Pier Cap for rebar details and dimensions.



ELEVATION



PLAN OF PROTECTION WALL

PILE DATA

Type and Size: Steel HP14x73
 Nominal Required Bearing: 420 kips
 Allowable Resistance Available: 140 kips
 Estimated Length:
 Pier 1: 70 Foot
 Pier 2: 46 Foot
 Number of Production Piles:
 Pier 1: 4 Each
 Pier 2: 4 Each
 Number of Test Piles:
 Pier 1: 1 Each
 Pier 2: 1 Each

BILL OF MATERIALS ONE PIER

BAR	NO.	SIZE	LENGTH	SHAPE
h ₃	54	#6	23'-8"	—
p ₁	14	#6	25'-8"	—
s ₁	26	#4	10'-5"	□
u ₁	54	#6	8'-6"	□
u ₂	8	#6	9'-0"	□
v ₁	50	#6	11'-3"	—
v ₂	50	#6	20'-6"	—
Concrete Structures			Cu Yd	67.5
Reinforcement Bars			Pound	5820

GENERAL NOTES

All exposed edges shall have standard 3/4" chamfer, unless otherwise noted.
 All clearances between rebar and form surface shall be 2", unless otherwise noted.
 Space reinforcement in cap to miss PPCDB dowel rods.
 The Contractor shall drive one (1) Steel HP14x73 Test Pile in a production pile location at each pier as directed by the Engineer before ordering the remainder of the piles.
 The Contractor is hereby advised that very stiff soils will be encountered prior to the location of anticipated refusal. See the Soil Borings for further information.
 The Steel H-piles shall be according to AASHTO M270 Grade 50.

PIER DETAILS
 TR 293 BRIDGE OVER
 CN / IC RAILROAD
 SECTION 96-10120-01-BR
 CLAY COUNTY, ILLINOIS

Sheet
 13
 of 13
 Job No. 51005

04/03/2007