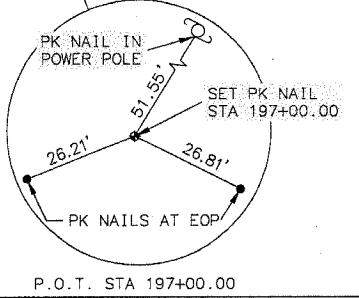
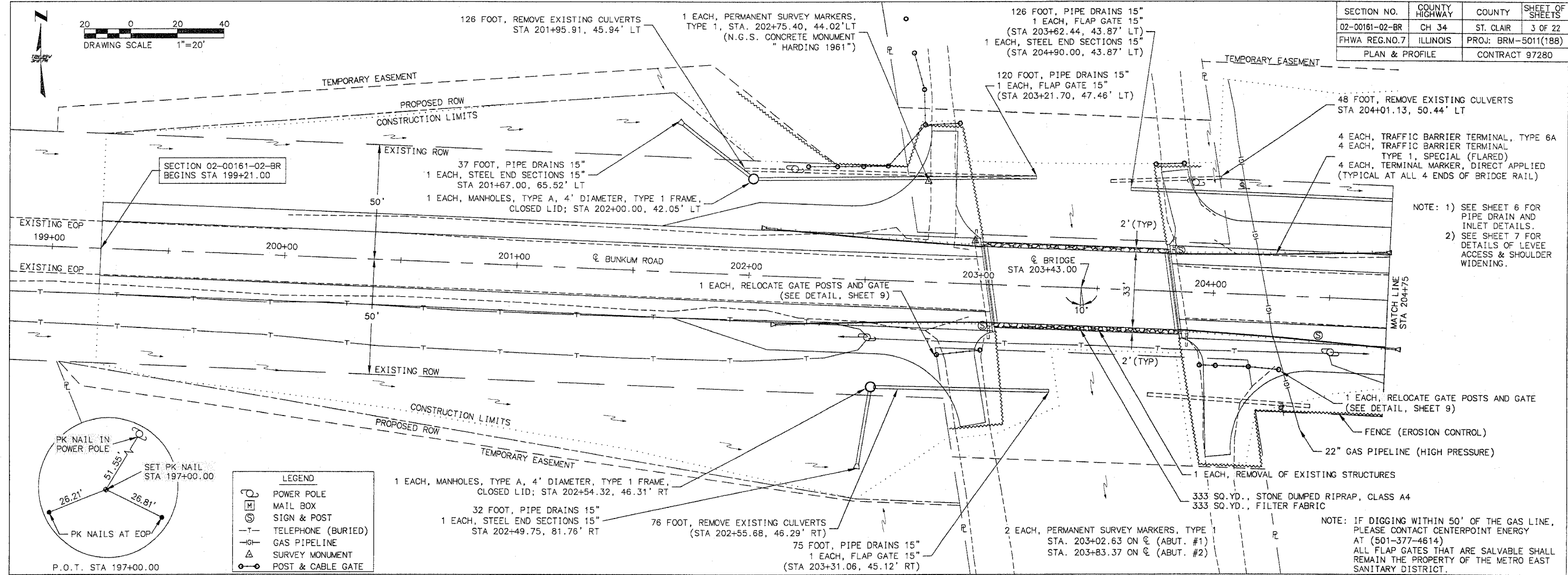


| SECTION NO. | COUNTY HIGHWAY | COUNTY | SHEET OF SHEETS |
|----------------|----------------|----------------|---------------------|
| 02-00161-02-BR | CH 34 | ST. CLAIR | 3 OF 22 |
| FHWA REG.NO.7 | | ILLINOIS | PROJ: BRM-5011(188) |
| PLAN & PROFILE | | CONTRACT 97280 | |



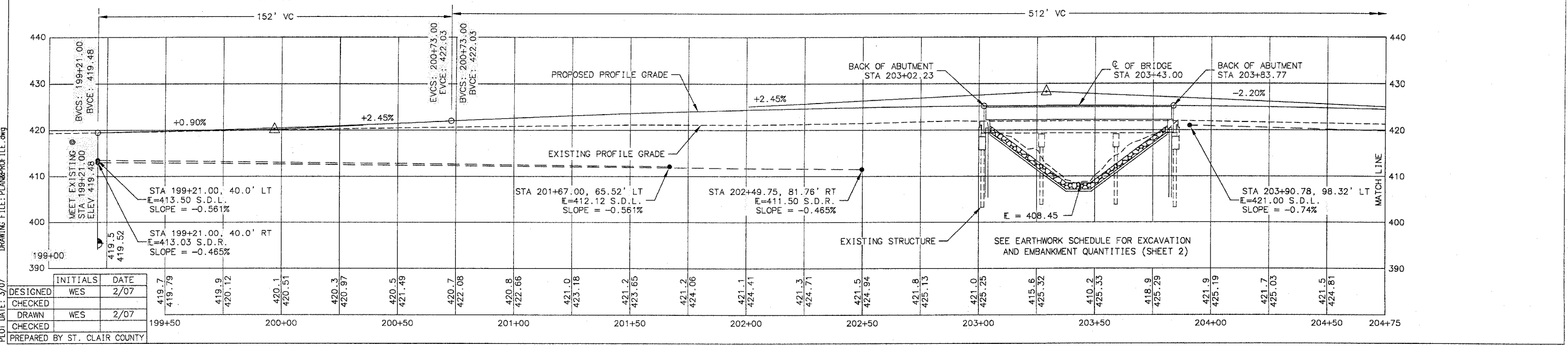
LEGEND

- POWER POLE
- MAIL BOX
- SIGN & POST
- TELEPHONE (BURIED)
- GAS PIPELINE
- SURVEY MONUMENT
- POST & CABLE GATE

NOTE: 1) SEE SHEET 6 FOR PIPE DRAIN AND INLET DETAILS.
 2) SEE SHEET 7 FOR DETAILS OF LEVEE ACCESS & SHOULDER WIDENING.

NOTE: IF DIGGING WITHIN 50' OF THE GAS LINE, PLEASE CONTACT CENTERPOINT ENERGY AT (501-377-4614)
 ALL FLAP GATES THAT ARE SALVABLE SHALL REMAIN THE PROPERTY OF THE METRO EAST SANITARY DISTRICT.

| | | | | | | |
|---|--|--|--|--|--|---|
| PROFILE SCALE: VERTICAL: 1"=10' HORIZONTAL: 1"=20' | PVI STA = 199+97.00 PVI ELEV = 420.17 A.D. = 1.55% K = 98 | TBM: NAIL IN POWER POLE STA 202+17.71; 45.53' LT ELEV = 420.23 | BM: NGS BRASS TAB IN WINGWALL STA 202+96.66; 18.94' LT ELEV = 422.49 | PVI STA = 203+29.00 PVI ELEV = 428.30 A.D. = -4.65% K = 110 | TBM: RR SPIKE IN POWER POLE STA 203+90.26; 46.48' LT ELEV = 423.31 | S.D.L. = SPECIAL DITCH LEFT S.D.R. = SPECIAL DITCH RIGHT |
|---|--|--|--|--|--|---|



DESIGNED: WES 2/07
 CHECKED: []
 DRAWN: WES 2/07
 CHECKED: []
 PREPARED BY ST. CLAIR COUNTY

DRAWING FILE: PLAN&PROFILE.dwg
 PLOT DATE: 3/07