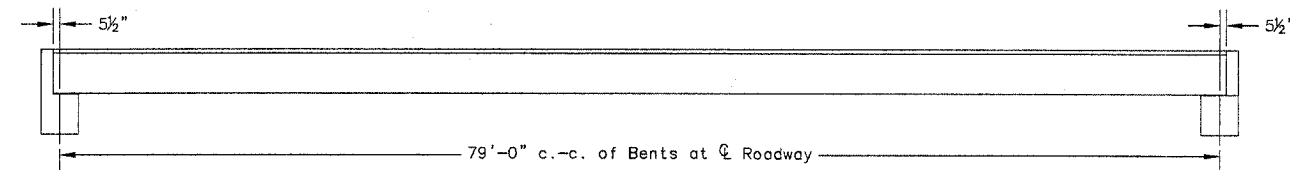
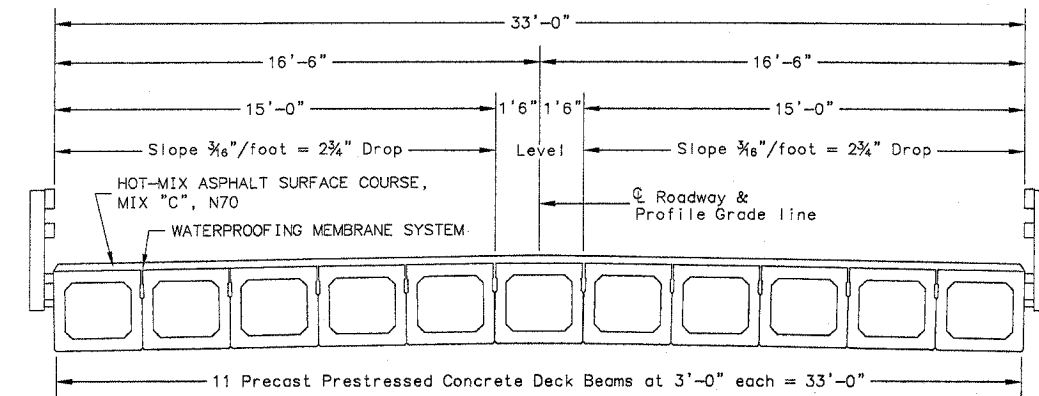


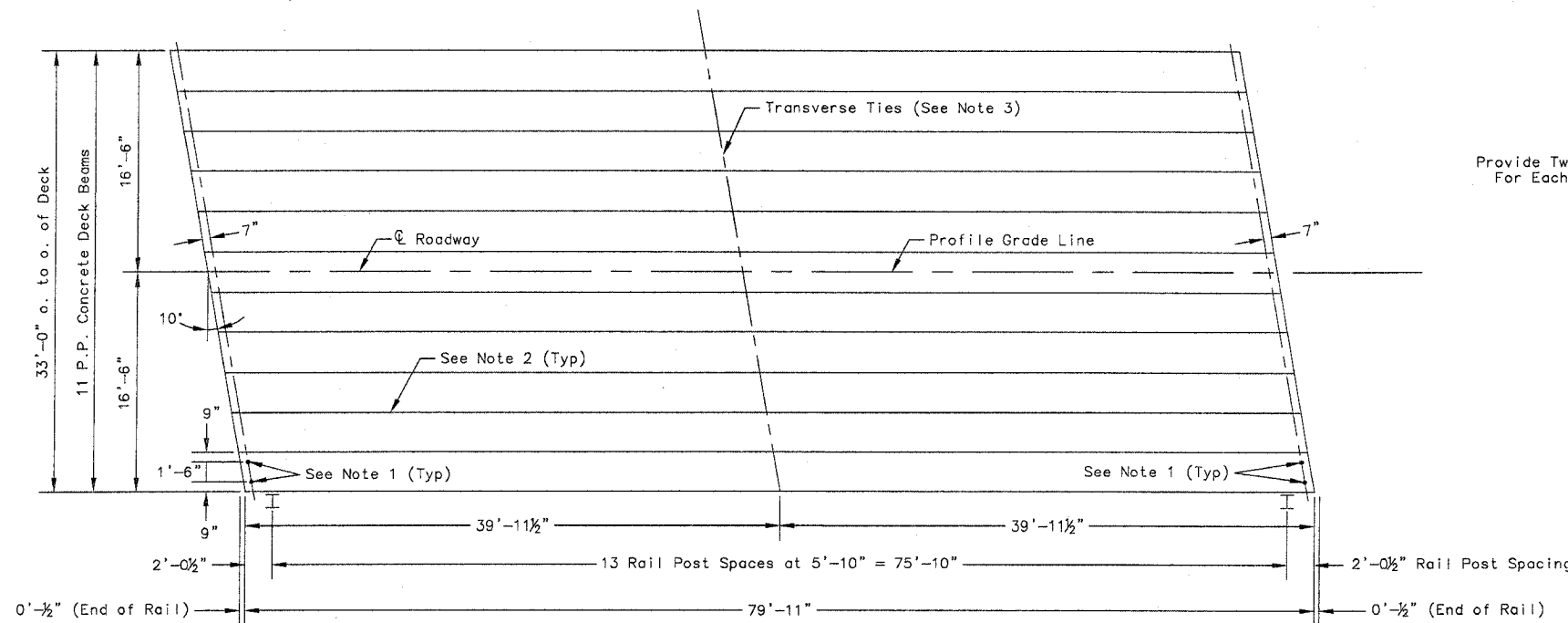
SECTION NO.	COUNTY HIGHWAY	COUNTY	SHEET OF SHEETS
02-00161-02-BR	CH 34	ST. CLAIR	11 OF 22
FHWA REG. NO. 7 ILLINOIS		PROJ: BRM-5011(188)	
SUPERSTRUCTURE		CONTRACT 97280	



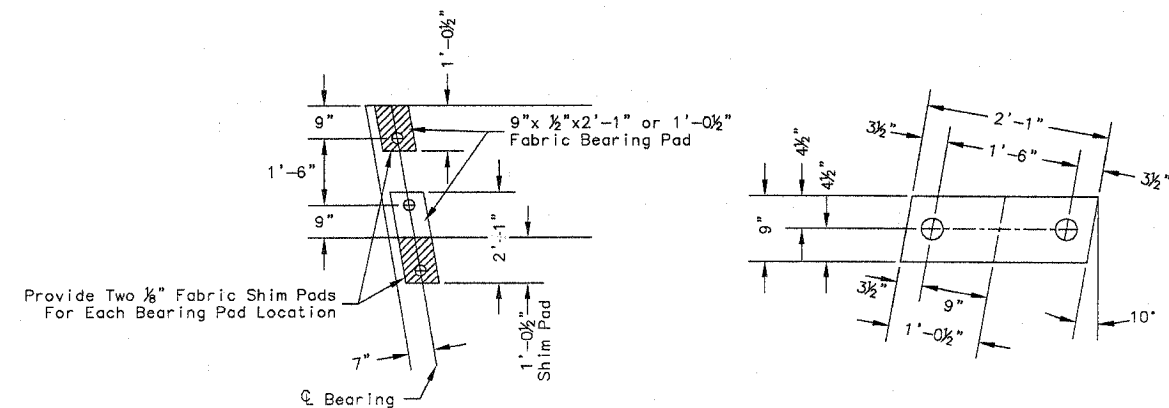
TYPICAL ELEVATION



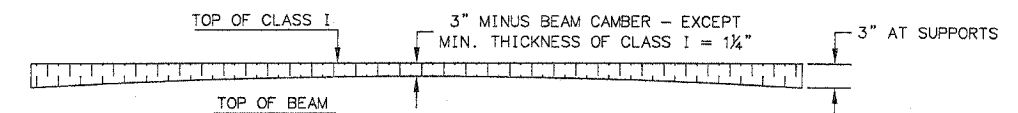
CROSS SECTION



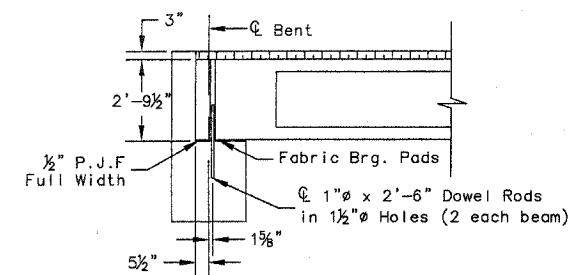
PLAN



1/2" FABRIC BRG. PAD DETAILS



PROFILE OF OVERLAY



SECTION AT ABUTS.
(ALONG C BEAMS)

QUANTITIES FOR ONE SPAN

P.P. CONC. DK. BM. 33" DP.	2640 SQ FT
STEEL RAILING, TYPE SM	160 FT
HMA SC 'C' N70	41.1 TONS
WATERPROOFING MEMBRANE SYSTEM	293.3 SQ YD

P.P.C. DECK BEAM SUPERSTRUCTURE

33' RDWY.	33' BMS.
80' SPAN	10' SKEW RT

NOTES

- AFTER BEAMS HAVE BEEN ERECTED, HOLES SHALL BE DRILLED INTO SUBSTRUCTURE AND ANCHOR DOWELS PLACED. DOWEL HOLES SHALL BE FILLED WITH NON-SHRINK GROUT TO TOP OF BEAM AND ALLOWED TO CURE MIN. 24 HRS. PRIOR TO GROUTING THE SHEAR KEYS.
- LONGITUDINAL KEYS SHALL BE GROUTED.
- THE 1" Ø RODS IN THE TRANSVERSE TIE ASSEMBLY SHALL BE TIGHTENED TO A SNUG FIT AND THE THREADS SET. POCKETS THAT RECEIVE TRANSVERSE TIE BAR OUTSIDE SHALL BE FILLED WITH GROUT AFTER TRANSVERSE TIE ASSEMBLY IS IN PLACE.

INITIALS	DATE
DESIGNED WES	7/04
CHECKED	
DRAWN WES	7/04
CHECKED	
PREPARED BY ST. CLAIR COUNTY	
CADD DRAWING FILE: superstr	

PLOT DATE: 3/07