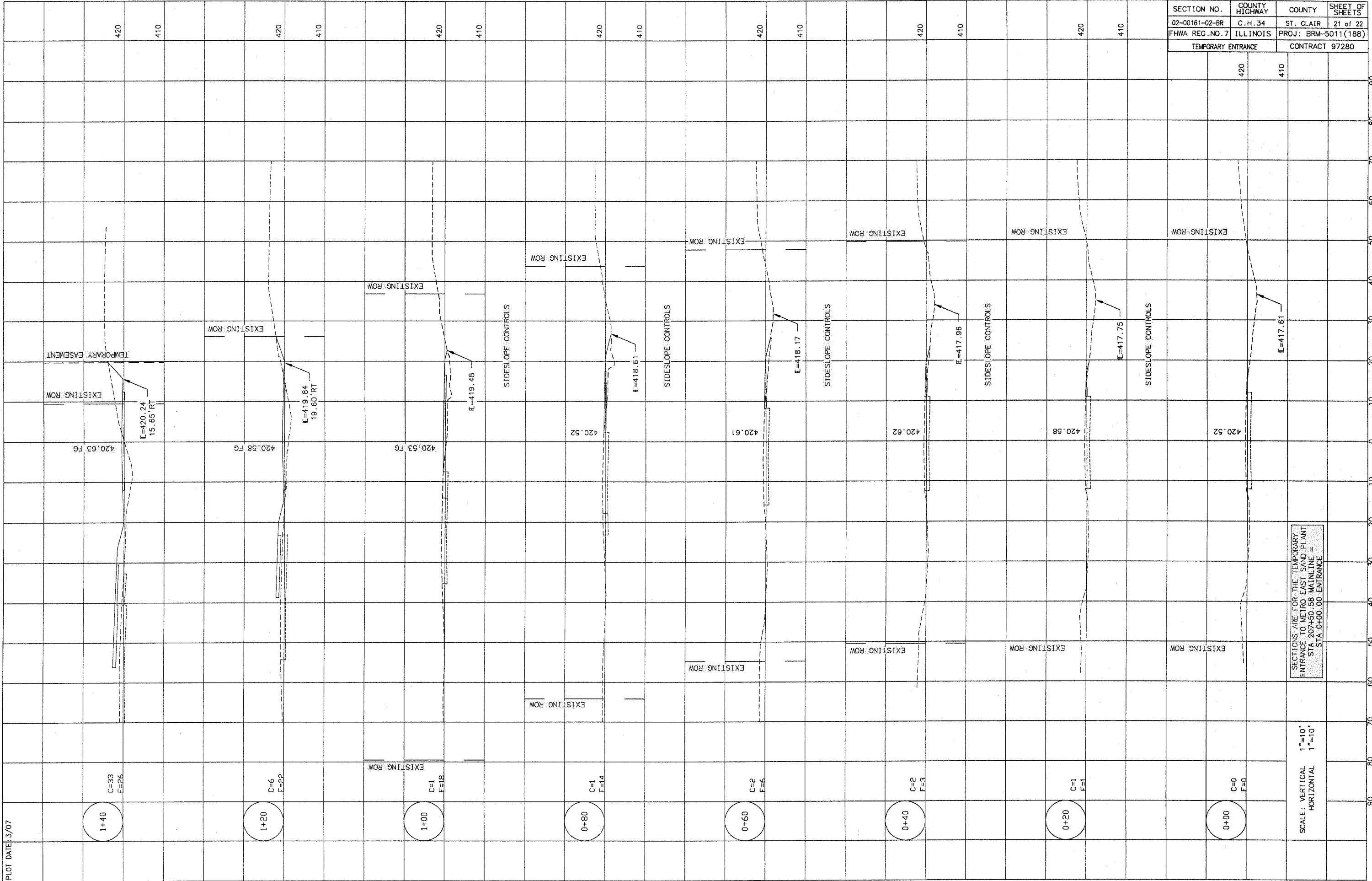


SECTION NO.	COUNTY HIGHWAY	COUNTY	SHEET OF SHEETS
02-00161-02-BR	C.H. 34	ST. CLAIR	21 of 22
FHWA REG. NO. 7	ILLINOIS	PROJ: BRM-5011(188)	
TEMPORARY ENTRANCE		CONTRACT 97280	



PLOT DATE: 3/07

SECTIONS ARE FOR THE TEMPORARY ENTRANCE TO METRO EAST SAND PLANT STA 207+50.58 MAINLINE = STA 0+00.00 ENTRANCE

SCALE: VERTICAL 1"=10'
HORIZONTAL 1"=10'