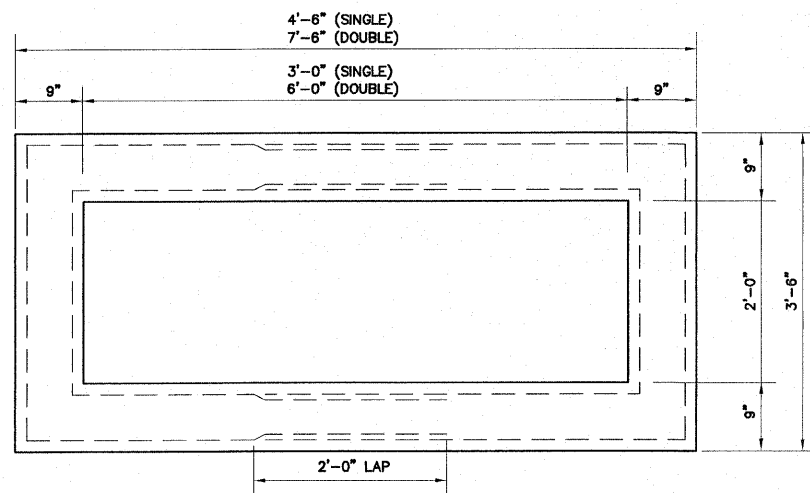


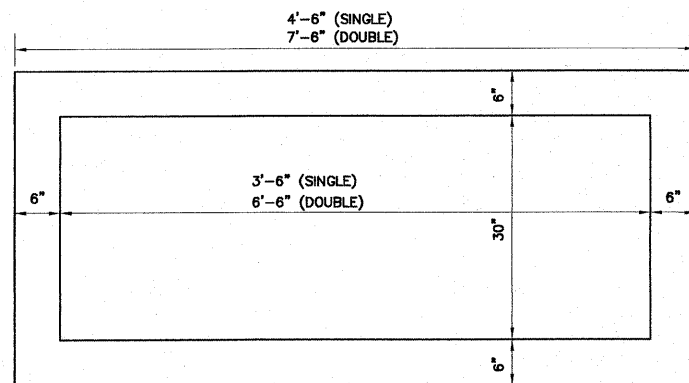
TYPICAL SECTION

INLET BOX, SPECIAL, No. 1 (SINGLE)
 INLET BOX, SPECIAL, No. 2 (DOUBLE)



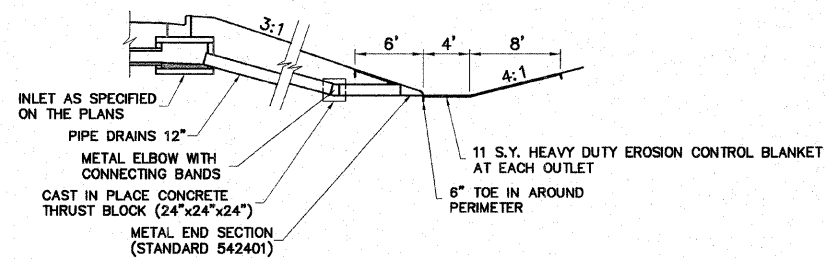
PLAN OF INLET TOP

INLET BOX, SPECIAL, No. 1 (SINGLE)
 INLET BOX, SPECIAL, No. 2 (DOUBLE)



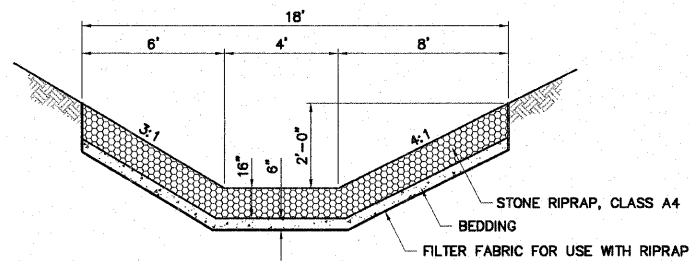
PLAN OF INLET BASE

INLET BOX, SPECIAL, No. 1 (SINGLE)
 INLET BOX, SPECIAL, No. 2 (DOUBLE)



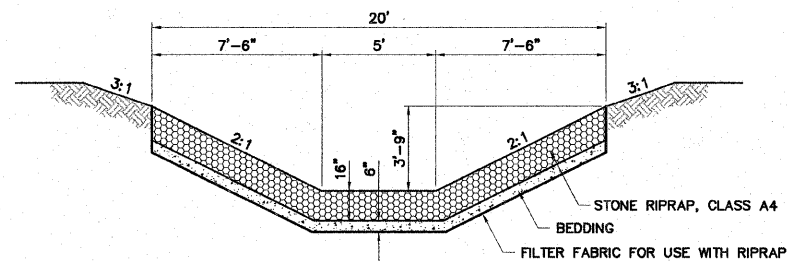
TYPICAL PIPE DRAIN DETAIL

(NO SCALE)



TYPICAL SECTION

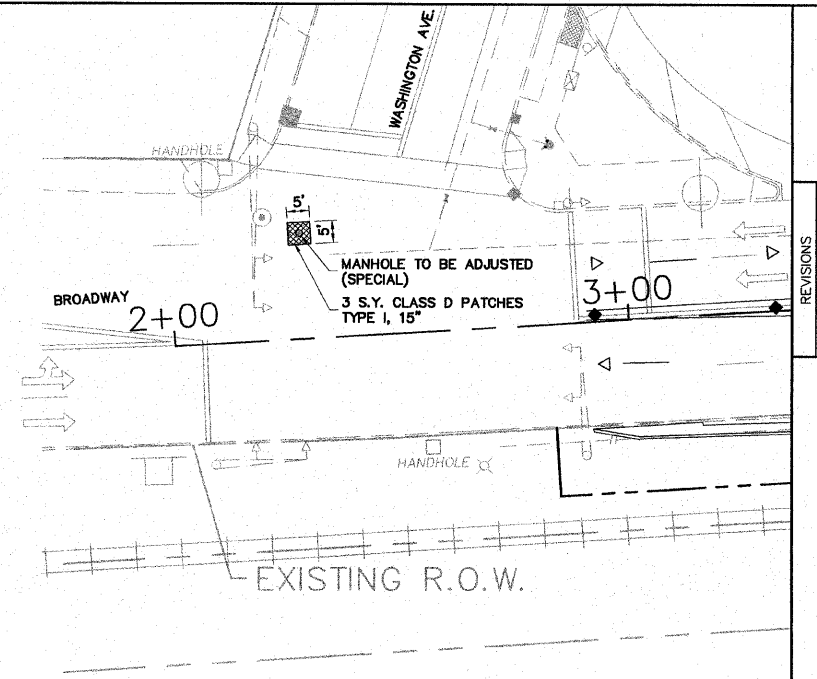
RIPRAP DITCHES STA. 117+80 TO STA. 118+47



NOTE: THE CONTRACTOR SHALL EXCAVATE, GRADE AND SHAPE THE OUTLET DITCH AS SHOWN ABOVE. THIS WORK SHALL BE INCLUDED IN THE COST OF PIPE CULVERT REMOVAL, 30"

SECTION B-B

EAST BROADWAY STORM SEWER OUTLET
 SEE SHEET NO. 17



MANHOLE TO BE ADJUSTED (SPECIAL)

SCALE: 1" = 20'

REVISIONS

Sheppard Morgan & Schwaab, Inc.
 CONSULTING ENGINEERS & LAND SURVEYORS

SMS ENGINEERS

CITY OF ALTON, ILLINOIS
 SECTION 06 - 00208 - 02 - RP
 CPL. CHRIS BELCHIK MEMORIAL EXPRESSWAY
 DETAILS OF CONSTRUCTION

DWG. NO. RI # DETAILS OF CONSTRUCTION/DWG
 REF. BK. INDIANA AVE.
 JOB NO. 406365.1
 DSN. BY: DEG
 DWN. BY: CAD
 CHK. BY: DEG
 DATE: OCTOBER, 2006
 SCALE: NO SCALE
 SHEET 9 OF 61