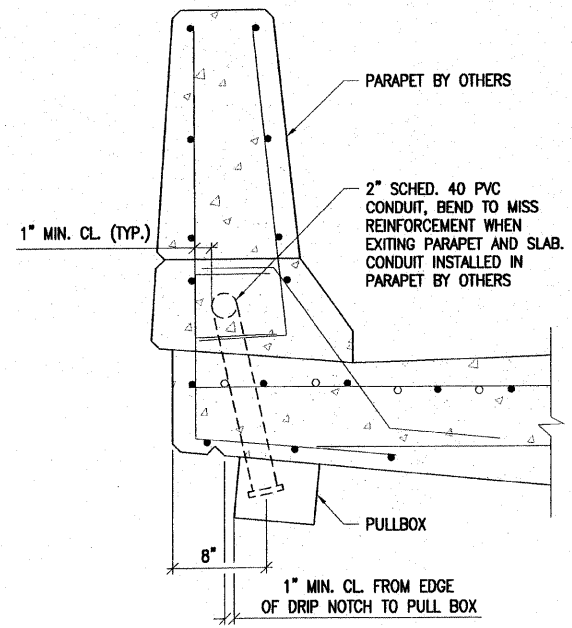
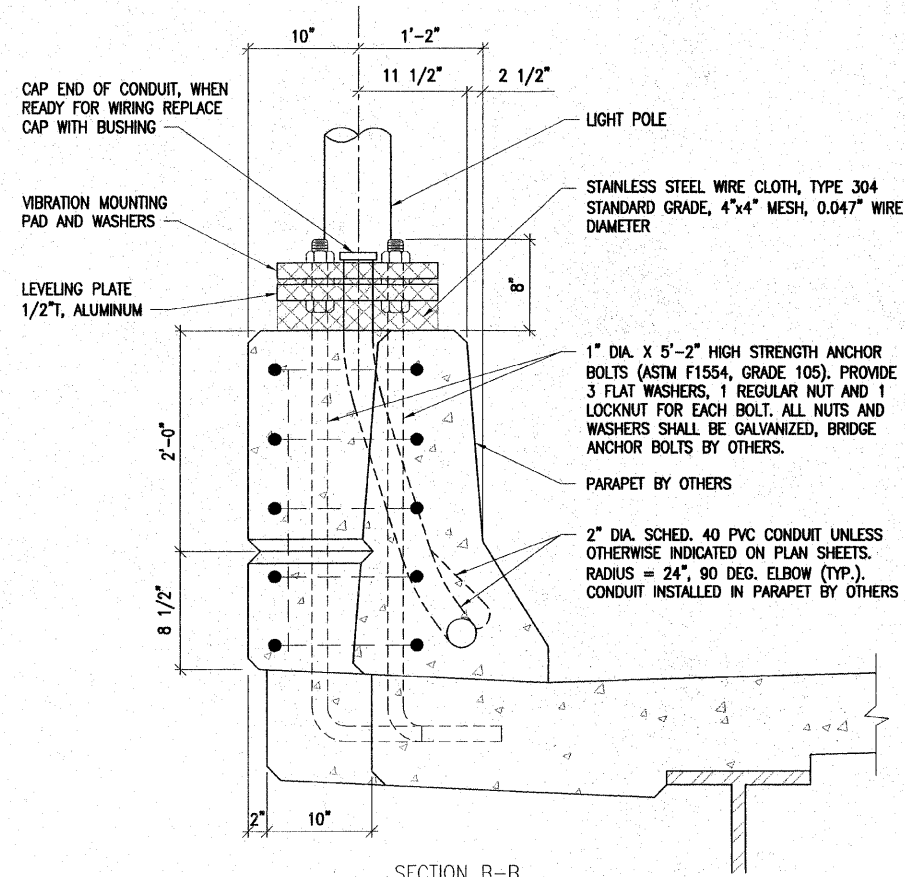


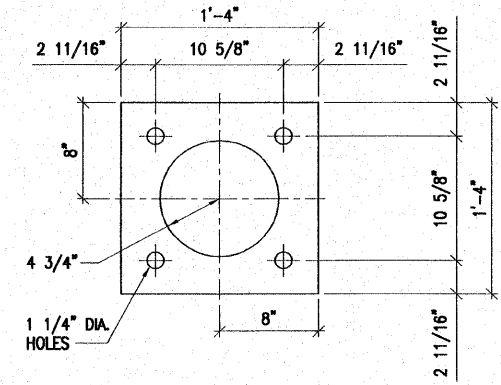
ROUTE NO.	SECTION	COUNTY	TOTAL SHEETS	SHEET NO.
FAU-8888	08-00208-02-BR	MADISON	61	41
FED. ROAD DIST. NO.		PROJECT		



SECTION A-A

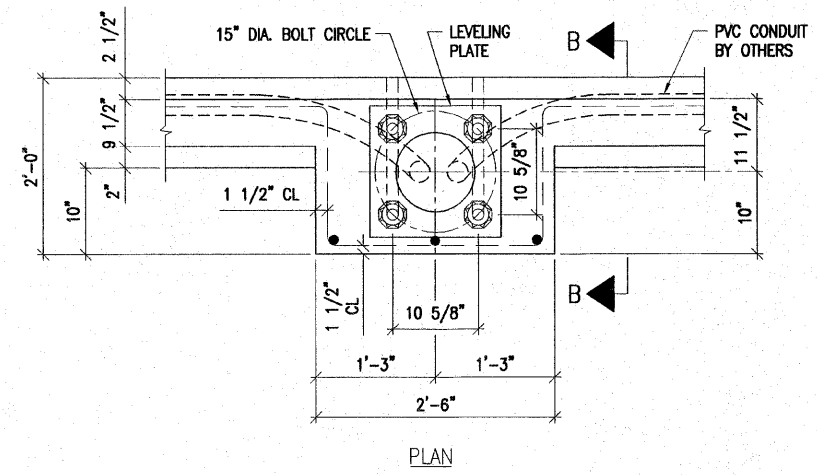


SECTION B-B



LEVELING PLATE DETAIL

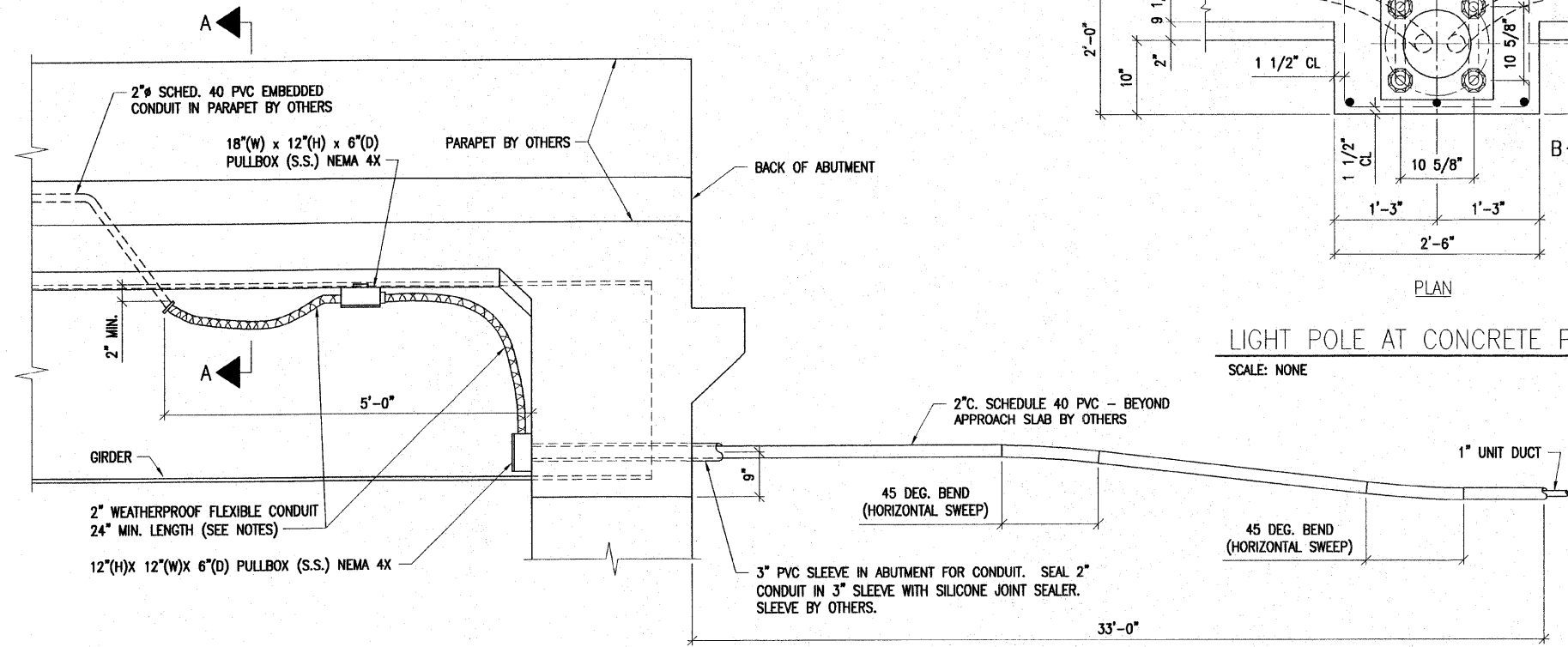
SCALE: NONE



PLAN

LIGHT POLE AT CONCRETE PARAPET

SCALE: NONE



SECTION AT ABUTMENTS DETAIL

SCALE: NONE

GENERAL NOTES:

1. LEVEL LIGHT POLE PLATES USING THE FLANGE NUTS, PRIOR TO POURING THE PARAPET WALL. THE BOTTOM OF THE PLATE SHALL BE AT THE SAME ELEVATION AS THE FINISHED CONCRETE PARAPET.
2. THE COST OF BRIDGE LIGHTING FOUNDATION ANCHOR BOLTS, CONDUIT AND FOUNDATION IS INCLUDED WITH BRIDGE SUPERSTRUCTURE.
3. 2" FLEXIBLE CONDUIT SHALL BE 24" (MIN.) IN LENGTH. IT SHALL HAVE SUFFICIENT SLACK TO ALLOW DEFLECTION AND EXPANSION.
4. ALL JUNCTION BOXES AND PULL BOXES ATTACHED TO THE STRUCTURE SHALL BE STAINLESS STEEL NEMA 4X (PER ARTICLE 1088.04), SIZE AS SPECIFIED. THE DOOR SHALL HAVE A STAINLESS STEEL CONTINUOUS HINGE PIN AND CLAMP ASSEMBLY.
5. THE CONTRACTOR SHALL NOT DRILL ANY HOLES IN THE BEAM, DECK OR SUPERSTRUCTURE OF THE BRIDGE OR WELD TO THE STRUCTURE UNLESS OTHERWISE SPECIFIED.
6. CONDUIT SHALL EXIT PARAPET IN LONGITUDINAL STRAIGHT LINE.
7. ALL JUNCTION BOXES SHALL HAVE A 1/8" WIRE MESH DRAIN IN THE BOTTOM.

INDIANA AVENUE EXTENSION
CITY OF ALTON, IL
ROADWAY LIGHTING
BRIDGE DETAILS

LAYOUT DRAWN REVIEWED	PJT ANC PJT	<p>Hanson Professional Services Inc. 1625 South Sixth Street Springfield, Illinois 62703-2886 ILLINOIS LICENSED PROFESSIONAL SERVICES CORPORATION #184-001084</p>	JOB NO. 95S10081
L-6			DATE 08-16-06

S:\land Projects\Alton Indiana Ph III 406365.dwg 10/11/2006 9:02:16 AM jman 1:1

S:\LAND PROJECTS\ALTON INDIANA PH III 406365.dwg\HANSON\E-503.DWG