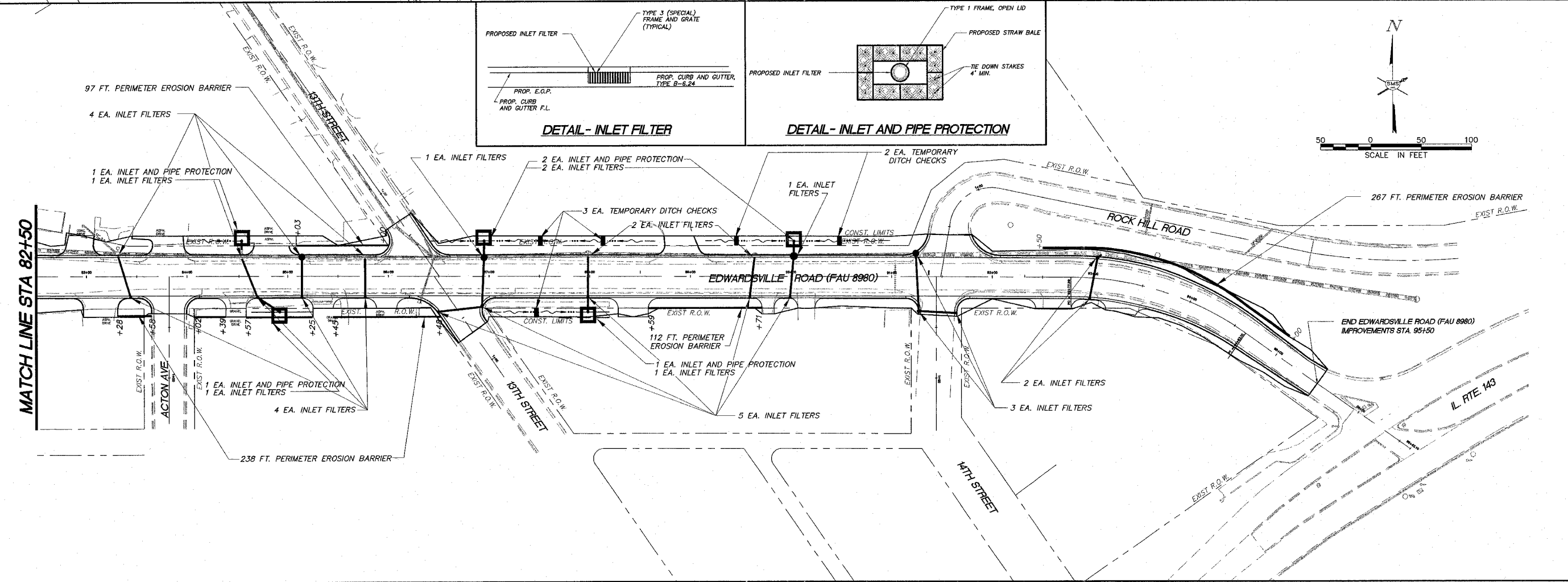
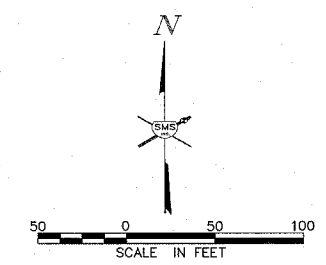
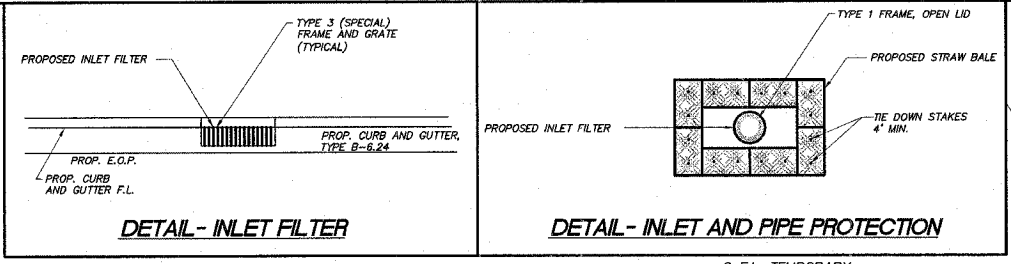


- NOTES:**
1. CONSTRUCT PERIMETER EROSION CONTROL AT THE BEGINNING OF CONSTRUCTION. REMOVE ALL TEMPORARY CONTROL AT THE END OF CONSTRUCTION.
 2. TEMPORARY DITCH CHECKS SHALL BE LOCATED AT EVERY 1.5 FOOT OF FALL/RISE IN THE DITCH GRADE.
 3. STRAW BALES, HAY BALES, PERIMETER EROSION BARRIER, AND SILT FENCES WILL NOT BE PERMITTED FOR TEMPORARY OR PERMANENT DITCH CHECKS. DITCH CHECKS SHALL BE CHOSEN FROM THE DEPARTMENT'S APPROVED PRODUCTS LIST. THE ONLY PRODUCTS APPROVED ARE ENVROSERM, TRIANGULAR SILT DIKE, GEORIDGE, AND ROLLED EXCELSIOR. ROLLED EXCELSIOR MUST COMPLY WITH THE SPECIFICATIONS OUTLINED IN THE IDOT, BUREAU OF DESIGN AND ENVIRONMENT MANUAL (BDE). AGGREGATE DITCH CHECKS CAN BE USED WHERE SPECIFIED.
 4. ALL EROSION CONTROL PRODUCTS FURNISHED SHALL BE SPECIFICALLY RECOMMENDED BY THE MANUFACTURER FOR THE USE SPECIFIED IN THE EROSION CONTROL PLANS. PRIOR TO THE APPROVAL AND THE USE OF THE PRODUCT, THE CONTRACTOR SHALL SUBMIT TO THE ENGINEER A NOTARIZED CERTIFICATION BY THE PRODUCER STATING THE INTENDED USE OF THE PRODUCT AND THAT THE PHYSICAL PROPERTIES REQUIRED FOR THIS APPLICATION ARE MET OR EXCEEDED. THE CONTRACTOR SHALL PROVIDE MANUFACTURER INSTALLATION PROCEDURES TO FACILITATE THE ENGINEER IN THE CONSTRUCTION INSPECTION.

REVISIONS

SMS Sheppard, Morgan & Schwaab, Inc.
CONSULTING ENGINEERS AND LAND SURVEYORS
215 Main Street, P.O. Box E, Alton, IL 62902 618893-9755 Email: mail@smsengineers.com
110 Central Industrial Drive, Granite City, IL 62040 618897-9700 Email: mail@smsengineers.com
DESIGN FIRM # 184-000992



DWG. NO. EROSION PHII 286614.dwg
JOB NO. 286614
DSN. BY: CLA
DWN. BY: CDP-jmk
CHK. BY: JHH
DATE: JANUARY, 2007

SCALE: 1" = 50'

SHEET 10 OF 31