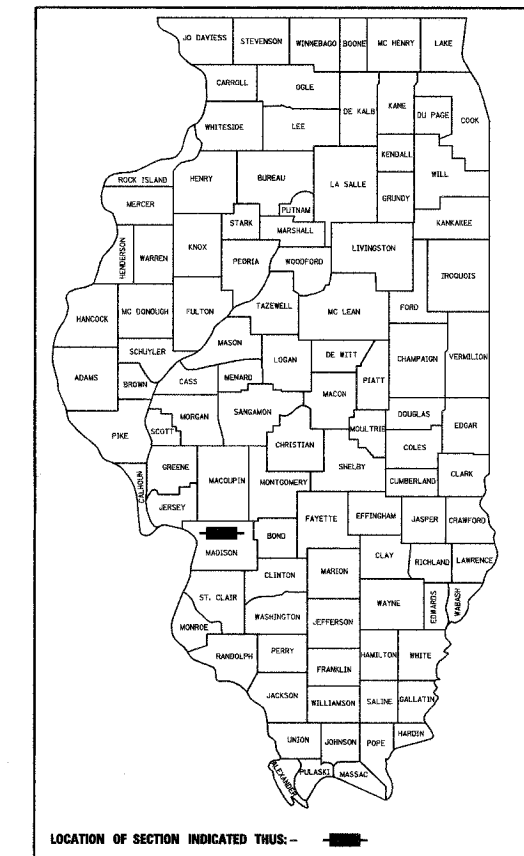


F.A. RTE.	SECTION	COUNTY	TOTAL SHEETS	SHEET NO.
9024	05-00187-01-RP	MADISON	79	1
FED. ROAD DIST. NO.	ILLINOIS	FED. AID PROJECT		
CONTRACT NO. 97286				

INDEX OF SHEETS

SHEET NUMBER	DESCRIPTION
1	COVER SHEET
2	INDEX OF SHEETS, HIGHWAY STANDARDS, GENERAL NOTES, AND LEGEND
3	SUMMARY OF QUANTITIES
4 - 5	TYPICAL SECTIONS - EXISTING
6 - 7	TYPICAL SECTIONS - PROPOSED
8 - 13	QUANTITY SCHEDULES
14	REFERENCE POINT TIES, COORDINATES AND BENCHMARKS
15 - 18	MAINTENANCE OF TRAFFIC - ADVANCED WARNING SIGNS & STAGES OF CONSTRUCTION
19 - 24	PLAN AND PROFILE SHEETS
25 - 31	DRAINAGE SHEETS
32 - 34	INTERSECTION GEOMETRIC DETAIL SHEETS
35 - 37	PAVEMENT MARKING SHEETS
38 - 40	REMOVAL SHEETS
41 - 46	EROSION AND SEDIMENT CONTROL SHEETS
47 - 48	ENTRANCE DETAILS
49	MISCELLANEOUS DETAIL SHEETS
50 - 79	CROSS SECTIONS

STATE OF ILLINOIS
DEPARTMENT OF TRANSPORTATION
DIVISION OF HIGHWAYS
STRATFORD LANE
PHASE 1
GRANITE CITY, ILLINOIS
FEDERAL PROJECT NO. HPP-0031(002)
JOB NO. C-98-315-06
SECTION NO. 05-00187-01-RP



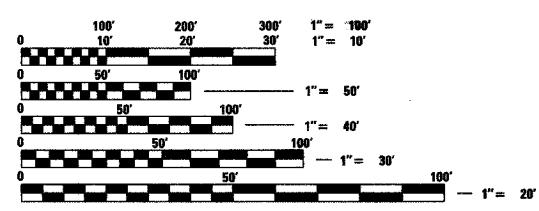
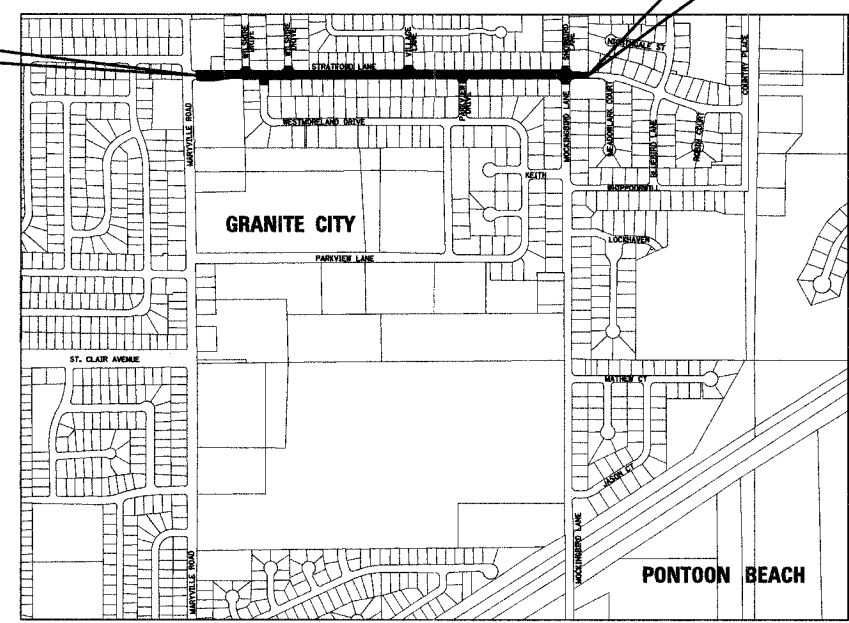
STANDARDS

STD. NO.	
000001-04	604006-02
001001-01	606001-03
001006	701311-02
280001-03	701606-04
424001-04	701801-03
442201-02	702001-06
602301-01	720001
602306-01	720006-01
602401-01	720011
602601-01	729001
602701-01	780001-01
604001-02	BLR 17-3
	BLR 22-4

SCALES
 PLAN 1" = 20'
 PROFILE HORIZ. 1" = 20'
 PROFILE VERT. 1" = 5'
 CROSS SECTIONS 1" = 10' HORIZ.
 1" = 5' VERT.

BEGIN PROJECT
STA. 52 + 33.30

END PROJECT
STA. 79 + 57.94



FULL SIZE PLANS HAVE BEEN PREPARED USING STANDARD ENGINEERING SCALES, REDUCED SIZED PLANS WILL NOT CONFORM TO STANDARD SCALES, IN MAKING MEASUREMENTS ON REDUCED PLANS, THE ABOVE SCALES MAY BE USED.

J.U.L.I.E.
 JOINT UTILITY LOCATION INFORMATION FOR EXCAVATION
 1-800-892-0123

DESIGN DESIGNATION
 FUNCTIONAL CLASSIFICATION: URBAN COLLECTOR
 ADT: 5100 (2005) 6225 (2025)
 DHV (2025): 623
 DESIGN SPEED: 30 MPH

LOCATION MAP
 SCALE: 1" = 400'
 NET LENGTH OF PROJECT: 2724.64 FEET - 0.516 MILES
 SECTION 9 & 10, T. 3 N., R. 9 W., 3RD P.M.
MADISON COUNTY



Brian F. Kulick 3/14/07
 BRIAN F. KULICK, P.E. No. 48936
 (Printed by Authority of the State of Illinois)
 Job No. 050210

STATE OF ILLINOIS Department of Transportation	
Approved	3-14-07 <i>Ed Hagan</i> Mayor, Granite City
Passed	March 21, 2007 <i>Janice Oestreich</i> District 6 Engineer of Local Roads & Streets
Releasing for Bid Based on Limited Review	3-21-07 <i>Mary C. Larson</i> Deputy Director of Highways, Region 5 Engineer

Juneau Associates, Inc. P.C.
 CONSULTING ENGINEERS AND LAND SURVEYORS
 2100 State Street, P.O. Box 1325
 Granite City, Illinois 62040
 Phone: (618) 857-1400 / (618) 452-5535
 Fax: (618) 452-5541
 100 North Research Drive
 Edwardsville, Illinois 62025
 Phone: (618) 559-0000 / (618) 459-0600
 Fax: (618) 452-0941