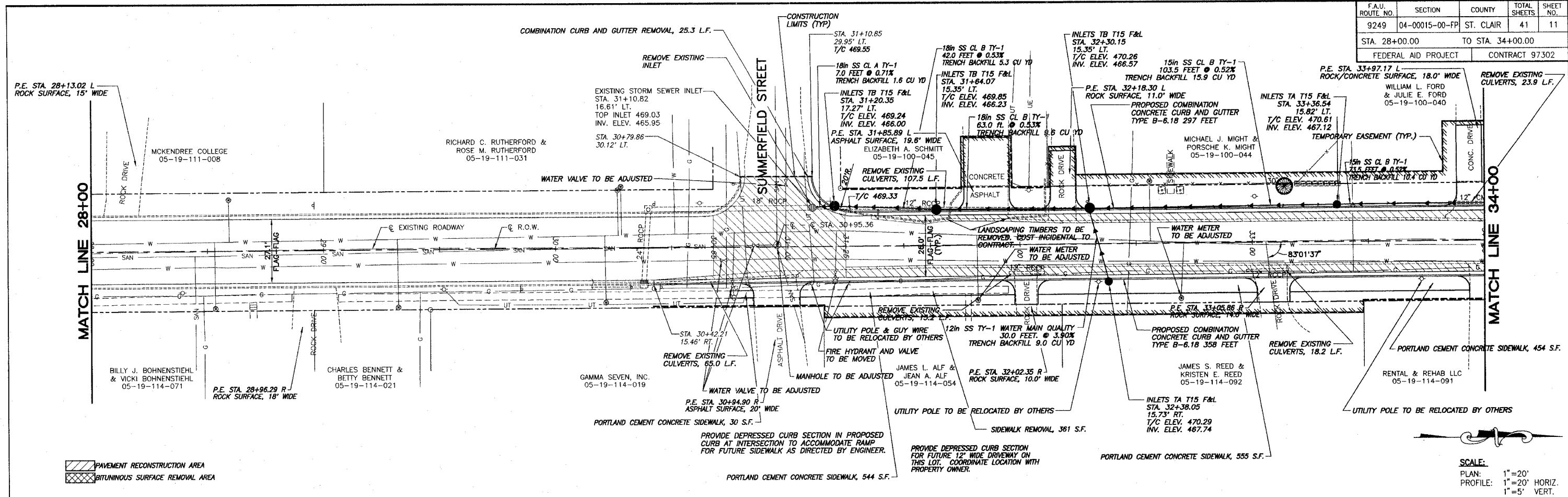
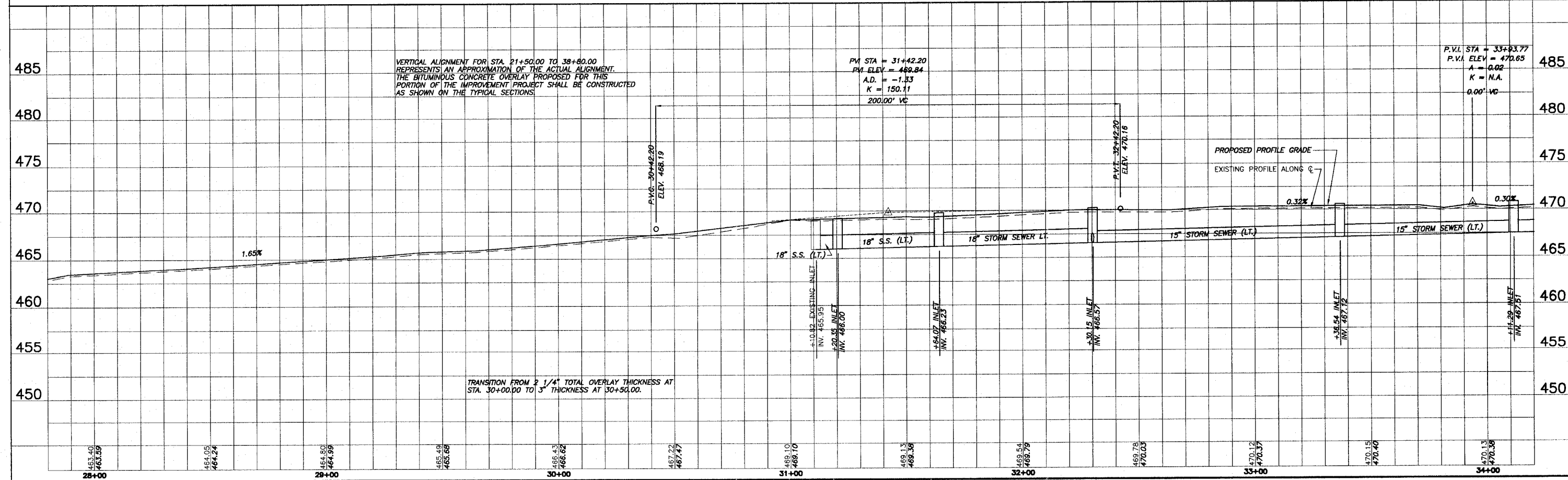


F.A.U. ROUTE NO.	SECTION	COUNTY	TOTAL SHEETS	SHEET NO.
9249	04-00015-00-FP	ST. CLAIR	41	11
STA. 28+00.00		TO STA. 34+00.00		
FEDERAL AID PROJECT		CONTRACT 97302		



PAVEMENT RECONSTRUCTION AREA  
 BITUMINOUS SURFACE REMOVAL AREA

SCALE:  
 PLAN: 1"=20'  
 PROFILE: 1"=20' HORIZ.  
 1"=5' VERT.



VERTICAL ALIGNMENT FOR STA. 21+50.00 TO 38+80.00 REPRESENTS AN APPROXIMATION OF THE ACTUAL ALIGNMENT. THE BITUMINOUS CONCRETE OVERLAY PROPOSED FOR THIS PORTION OF THE IMPROVEMENT PROJECT SHALL BE CONSTRUCTED AS SHOWN ON THE TYPICAL SECTIONS.

TRANSITION FROM 2 1/4" TOTAL OVERLAY THICKNESS AT STA. 30+00.00 TO 3" THICKNESS AT 30+50.00.