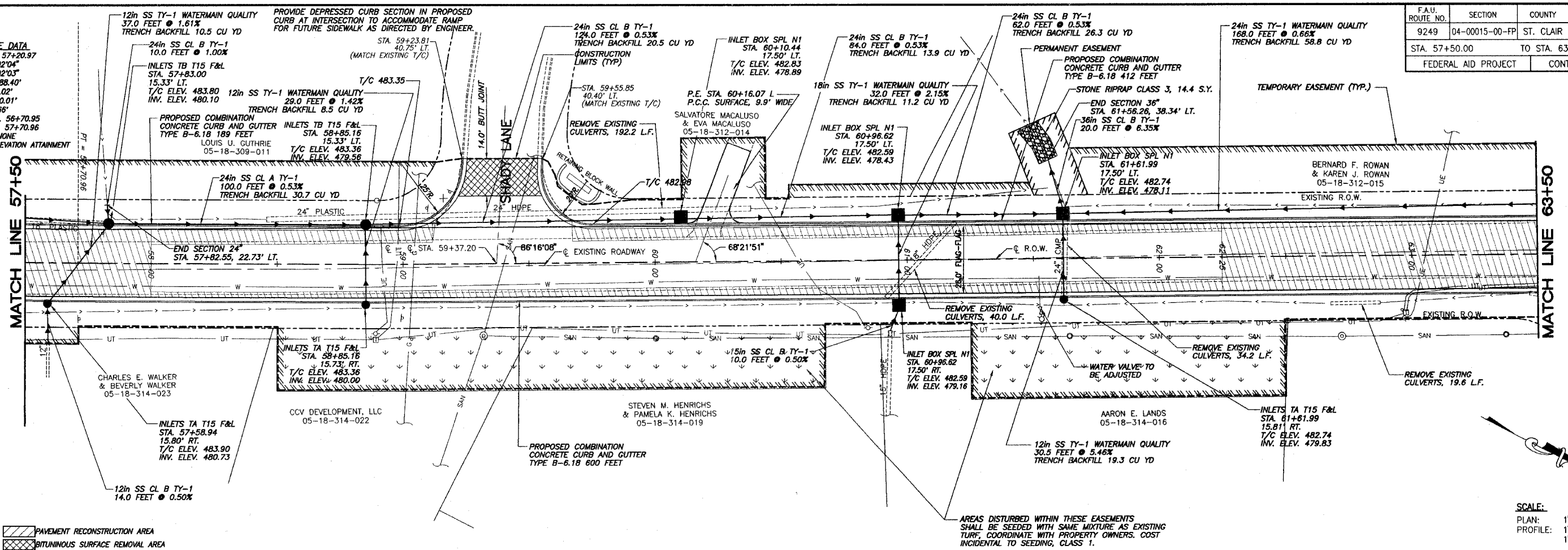


F.A.U. ROUTE NO.	SECTION	COUNTY	TOTAL SHEETS	SHEET NO.
9249	04-00015-00-FP	ST. CLAIR	41	16
STA. 57+50.00		TO STA. 63+50.00		
FEDERAL AID PROJECT			CONTRACT 97302	

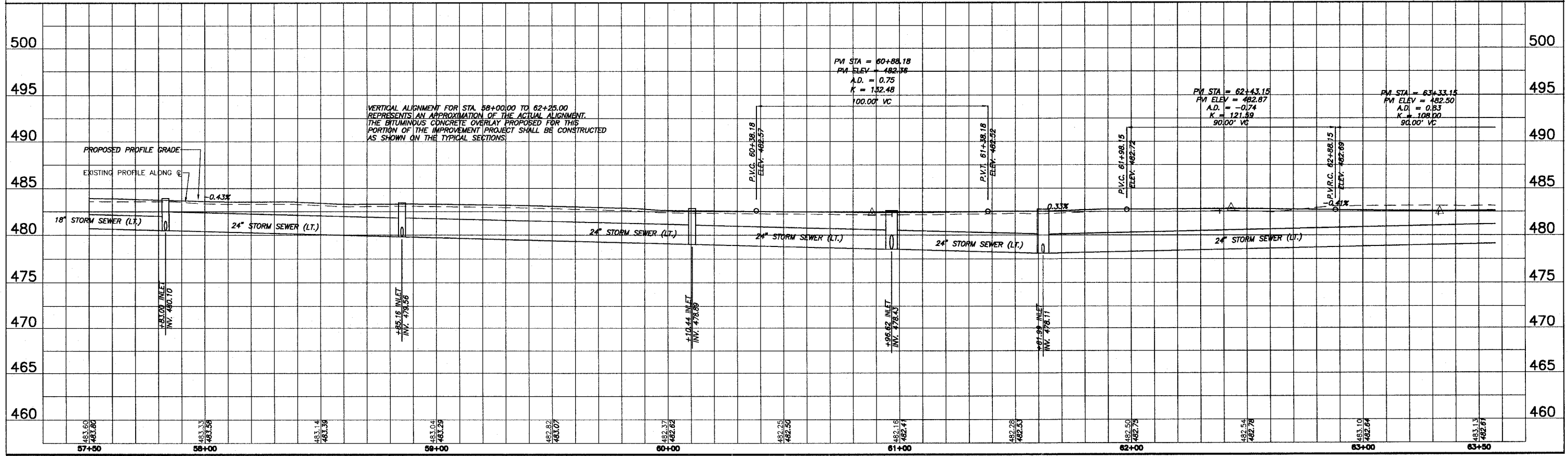
CURVE DATA
 P.I. STA. 57+20.97
 $\Delta = 302'04"$
 $D = 302'03"$
 $R = 1888.40'$
 $L = 50.02'$
 $E = 0.66'$
 P.C. STA. 56+70.95
 P.T. STA. 57+20.96
 S.E. = NONE
 SUPERELEVATION ATTAINMENT N.A.



PAVEMENT RECONSTRUCTION AREA
 BITUMINOUS SURFACE REMOVAL AREA

AREAS DISTURBED WITHIN THESE EASEMENTS SHALL BE SEEDED WITH SAME MIXTURE AS EXISTING TURF, COORDINATE WITH PROPERTY OWNERS. COST INCIDENTAL TO SEEDING, CLASS 1.

SCALE:
 PLAN: 1"=20'
 PROFILE: 1"=20' HORIZ.
 1"=5' VERT.



VERTICAL ALIGNMENT FOR STA. 58+00.00 TO 62+25.00 REPRESENTS AN APPROXIMATION OF THE ACTUAL ALIGNMENT. THE BITUMINOUS CONCRETE OVERLAY PROPOSED FOR THIS PORTION OF THE IMPROVEMENT PROJECT SHALL BE CONSTRUCTED AS SHOWN ON THE TYPICAL SECTIONS.