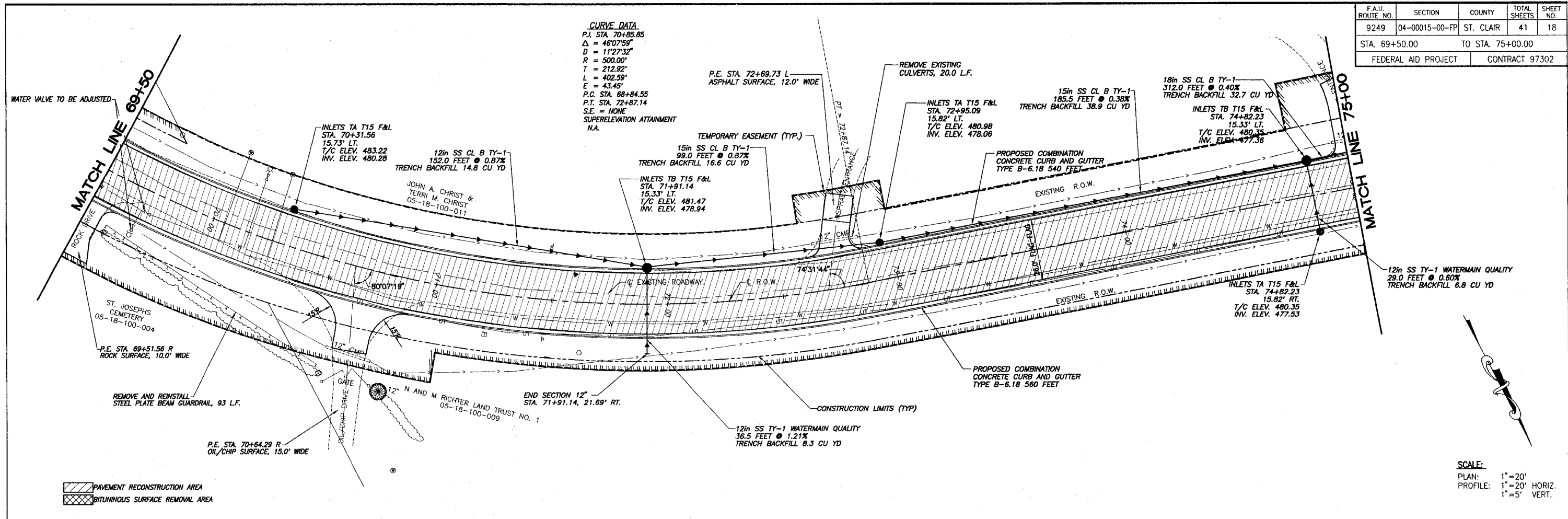
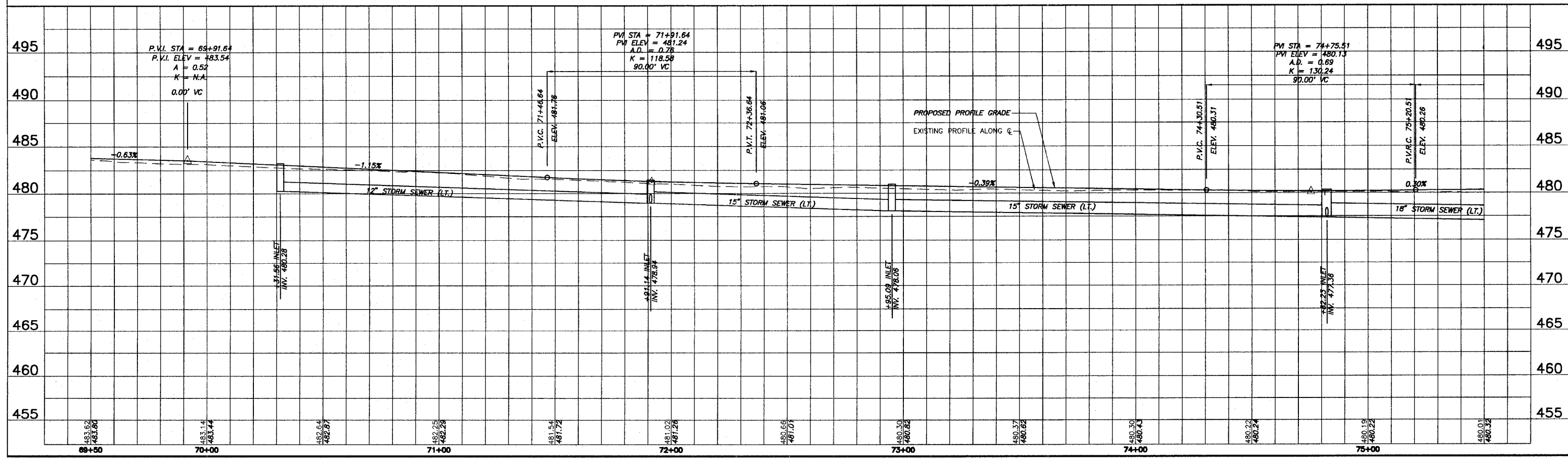


F.A.U. ROUTE NO.	SECTION	COUNTY	TOTAL SHEETS	SHEET NO.
9249	04-00015-00-PP	ST. CLAIR	41	18
STA. 69+50.00		TO STA. 75+00.00		
FEDERAL AID PROJECT		CONTRACT 97302		

CURVE DATA
 P.I. STA. 70+85.85
 $\Delta = 46^{\circ}07'59''$
 $D = 11^{\circ}27'32''$
 $R = 500.00'$
 $T = 212.92'$
 $L = 402.59'$
 $E = 43.45'$
 P.C. STA. 68+84.55
 P.T. STA. 72+87.14
 S.E. = NONE
 SUPERELEVATION ATTAINMENT N.A.



SCALE:
 PLAN: 1" = 20'
 PROFILE: 1" = 20' HORIZ.
 1" = 5' VERT.



E:\10484 - Lebanon - Route 9249 Project\Drawings\Sheet 18_PP_11.dwg, 3/16/2007 8:38:44 AM, Plotted by M.L.L.