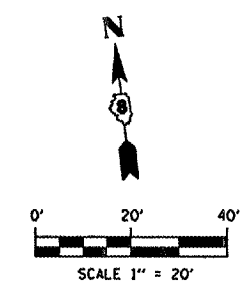




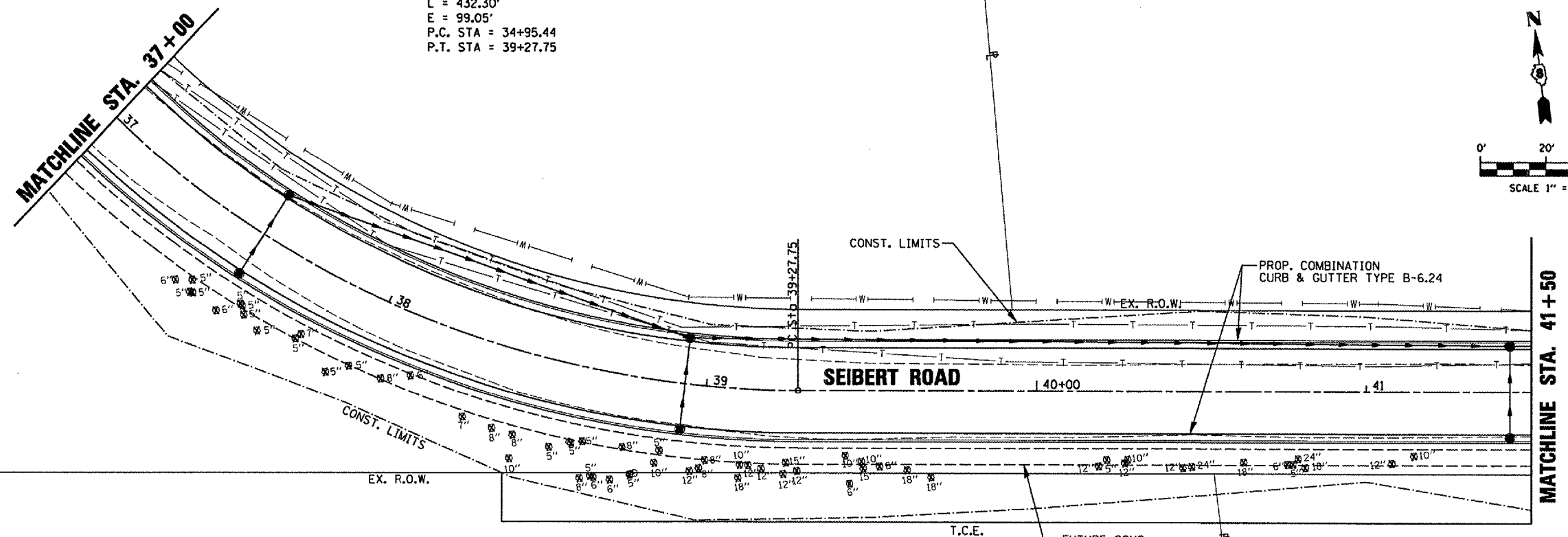
☑ CORPORATE OFFICE
4940 OLD COLLINSVILLE RD.
SWANSEA, ILLINOIS 62226
TEL (618) 624-4488
FAX (618) 624-6886
corp@twm-inc.com

☐ WATERLOO OFFICE
118 SOUTH MAIN STREET
WATERLOO, ILLINOIS 62298
TEL (618) 839-5060
FAX (618) 988-9888
waterloo@twm-inc.com

☐ ST. LOUIS OFFICE
1001 CRAIG ROAD, SUITE 260
ST. LOUIS, MISSOURI 63146
TEL (314) 288-6052
FAX (314) 872-2194
stlouis@twm-inc.com

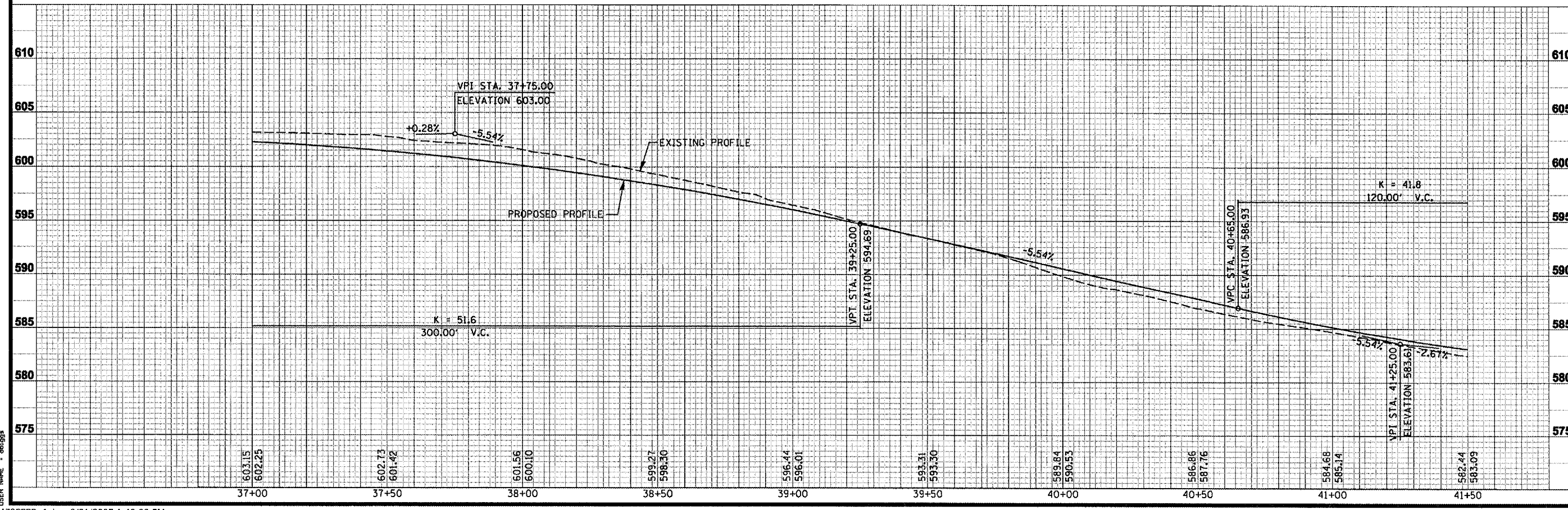


PROP. CURVE SEIB7
PI STA. = 37+58.70
 $\Delta = 82^\circ 28' 24''$ (LT)
D = 19° 04' 39"
R = 300.33'
T = 263.26'
L = 432.30'
E = 99.05'
P.C. STA = 34+95.44
P.T. STA = 39+27.75



PROFESSIONAL REGISTRATIONS	LICENSE NO.
ILLINOIS PROFESSIONAL DESIGN PE/EA	04-02280
PROFESSIONAL ENGINEERING CORP.	01-00070
PROFESSIONAL SURVEYING CORP.	01-00005
ILLINOIS PROF. LAND SURVEYING CORP.	048-00000
MISSOURI PROFESSIONAL ENGINEER	NO 04026
MISSOURI LAND SURVEYING CORP.	NO 00004

STATEMENT OF RESPONSIBILITY
I, hereby certify that the documents herein to be authorized by me and is restricted to this sheet, and I hereby disclaim any responsibility for all other drawings, specifications, schedules, reports or other documents or instruments relating to or intended to be utilized for any other part of the construction, engineering or survey project.



TITLE
ROADWAY PLAN AND PROFILE
STA. 37+00 TO 41+50

PROJECT:
SEIBERT ROAD
RECONSTRUCTION - PHASE IV
VILLAGE OF SHILOH
ST. CLAIR COUNTY, ILLINOIS

REV.	DATE	DESCRIPTION
△		
△		
△		

DRAWN BY: MJJ	SHEET
DESIGNED BY: MJJ	10
CHECKED BY: XXX	
APPROVED BY: XXX	
PROJECT NUMBER: D20010479	OF 96 SHEETS
<input type="checkbox"/> ISSUED FOR REVIEW	<input type="checkbox"/> ISSUED FOR BIDDING
<input type="checkbox"/> ISSUED FOR CONSTR.	<input type="checkbox"/> RECORD DRAWING