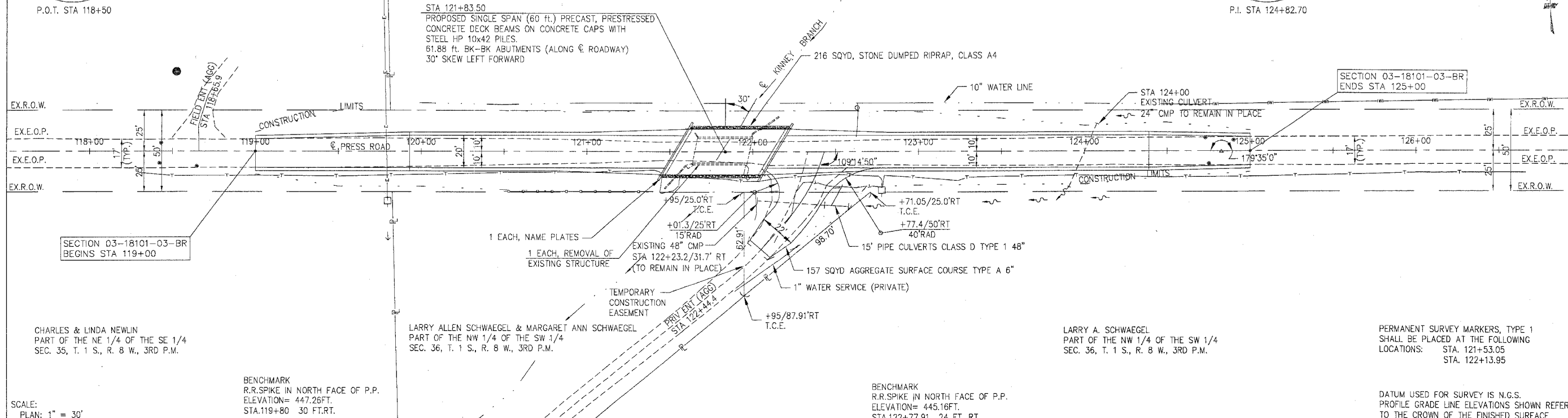


SHARON A. LUEBBERS  
SW 1/4 OF THE NW 1/4  
SEC. 36, T. 1 S., R. 8 W., 3RD P.M.

SECTION NO.	ROAD DISTRICT	COUNTY	SHEET OF SHEETS
03-18101-03-BR	SMITHTON	ST. CLAIR	4 OF 13
FHWA REG. NO.	ILLINOIS	PROJ BROS-163(28)	
FEDERAL AID PROJECT	CONTRACT #97306		



CHARLES & LINDA NEULIN  
PART OF THE NE 1/4 OF THE SE 1/4  
SEC. 35, T. 1 S., R. 8 W., 3RD P.M.

LARRY ALLEN SCHWAEGL & MARGARET ANN SCHWAEGL  
PART OF THE NW 1/4 OF THE SW 1/4  
SEC. 36, T. 1 S., R. 8 W., 3RD P.M.

LARRY A. SCHWAEGL  
PART OF THE NW 1/4 OF THE SW 1/4  
SEC. 36, T. 1 S., R. 8 W., 3RD P.M.

PERMANENT SURVEY MARKERS, TYPE 1  
SHALL BE PLACED AT THE FOLLOWING  
LOCATIONS: STA. 121+53.05  
STA. 122+13.95

SCALE:  
PLAN: 1" = 30'

BENCHMARK  
R.R. SPIKE IN NORTH FACE OF P.P.  
ELEVATION = 447.26 FT.  
STA. 119+80 30 FT. RT.

BENCHMARK  
R.R. SPIKE IN NORTH FACE OF P.P.  
ELEVATION = 445.16 FT.  
STA. 122+77.91 24 FT. RT.

DATUM USED FOR SURVEY IS N.G.S.  
PROFILE GRADE LINE ELEVATIONS SHOWN REFER  
TO THE CROWN OF THE FINISHED SURFACE.

