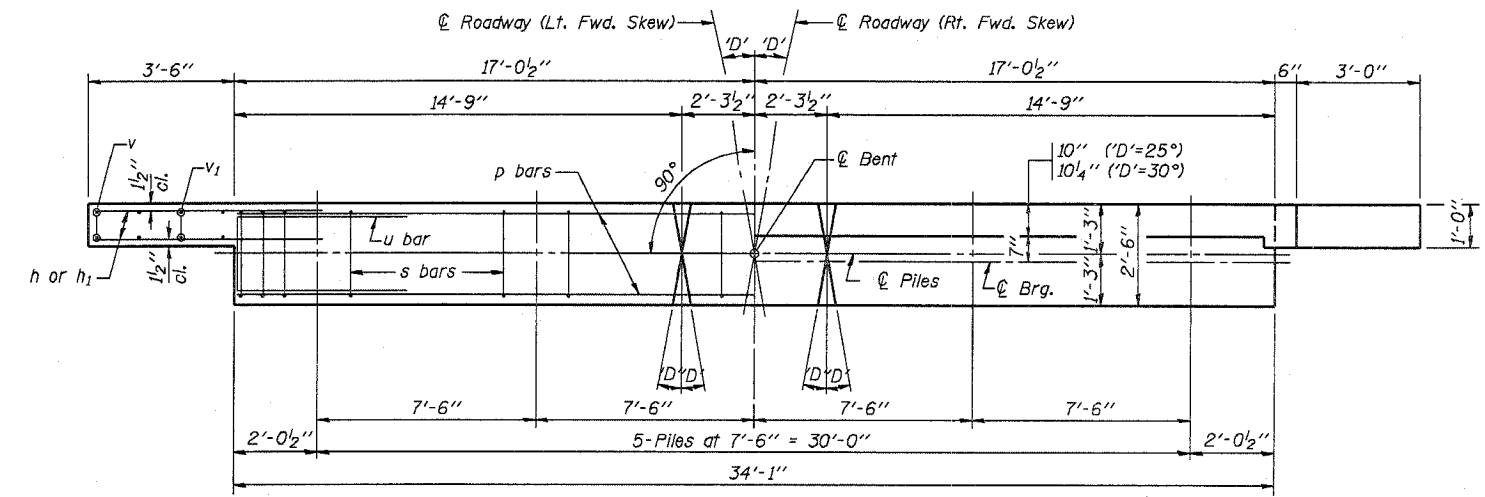
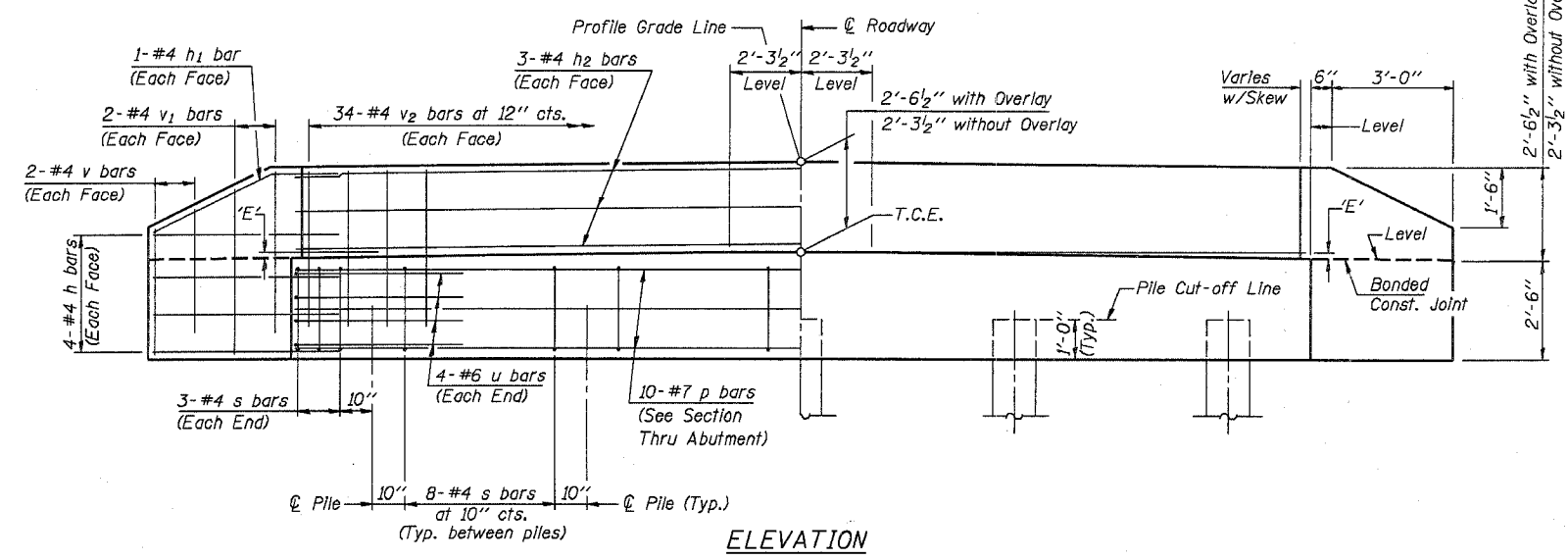


SECTION NO.	ROAD DISTRICT	COUNTY	SHEET OF SHEETS
03-18101-03-BR	SMITHTON	ST. CLAIR	8 OF 13
FHWA REG. NO.	ILLINOIS	PROJ BROS-163(28)	
FEDERAL AID PROJECT		CONTRACT #97306	



PLAN
(D'=Designated Skew Angle)



ELEVATION

DIMENSION 'E'

GRADE	'D'=25°		'D'=30°	
	UPGRADE END	DOWNGRADE END	UPGRADE END	DOWNGRADE END
0%	2 1/2"	2 1/2"	2 3/8"	2 3/8"
Over 0% to 1%	2 1/8"	2 7/8"	2"	2 7/8"
Over 1% to 2%	1 3/8"	3 5/8"	1"	3 3/4"
Over 2% to 3%	5/8"	4 3/8"	1/2"	4 5/8"
Over 3% to 4%	0"	5/8"		

NOTES

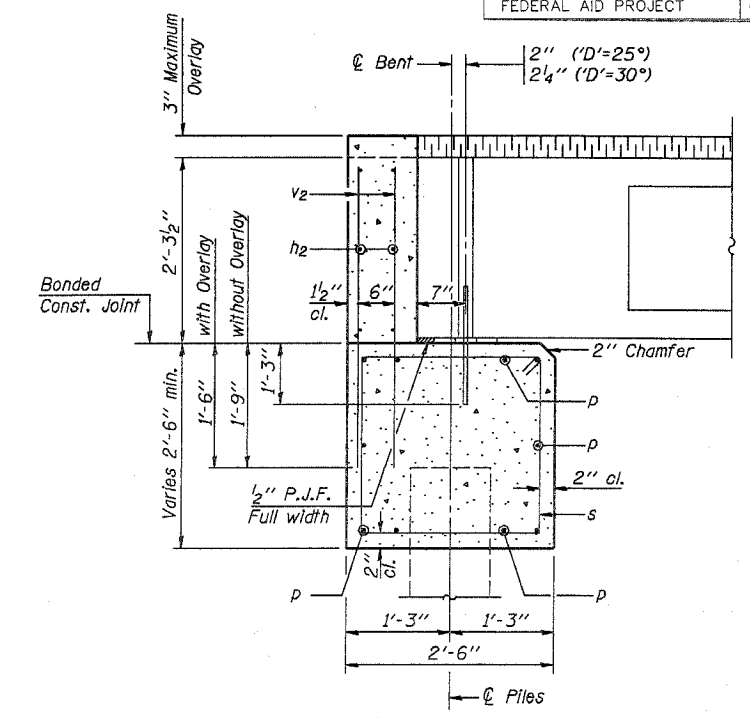
- The Backwall and the portion of the Wingwalls above the bonded construction joint shall be cast against the in-place beam.
- Reinforcement bars shall conform to the requirements of A.A.S.H.T.O. M-31 or M-322, Grade 60.
- Space reinforcement in cap to miss anchor bolts.

MAXIMUM PILE LOADS

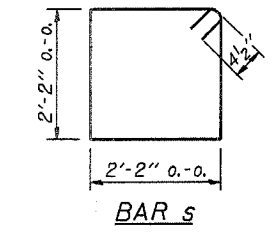
SPAN	TONS
40'	29
50'	33
60'	37

DESIGN STRESSES

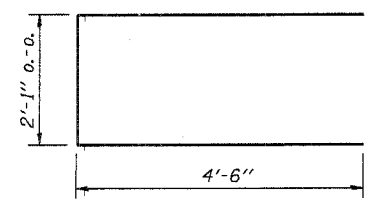
f'c = 3,500 psi
fy = 60,000 psi



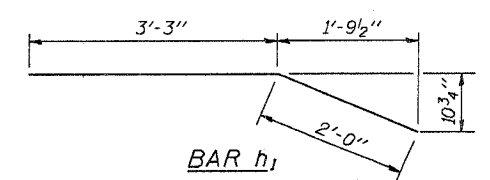
SECTION THRU ABUTMENT
(At Right Angles)



BAR s



BAR u



BAR h1

BAR LIST FOR ONE ABUTMENT

Bar No.	Size	Length	Shape
h	#4	5'-0"	—
h1	#4	5'-3"	—
h2	#4	33'-9"	—
p	#7	33'-9"	—
s	#4	9'-5"	□
u	#6	11'-1"	—
v	#4	3'-2"	—
v1	#4	4'-2"	—
v2	#4	3'-11"	—
Concrete Structures		12.2 Cu. Yds.	
Reinforcement Bars		1480 Lb.	

Illinois Department of Transportation
 PASSED APRIL 4, 2005
 Thomas S. Nomanaleki
 Engineer of Bridge Design
 APPROVED APRIL 4, 2005
 Ralph E. Anderson
 Engineer of Bridges and Structures

P.P.C. DECK BEAMS
 PILE BENT ABUTMENT
 28' RDWY. 27" BMS. 'D'=25° OR 30°
 STANDARD CA-2827-30