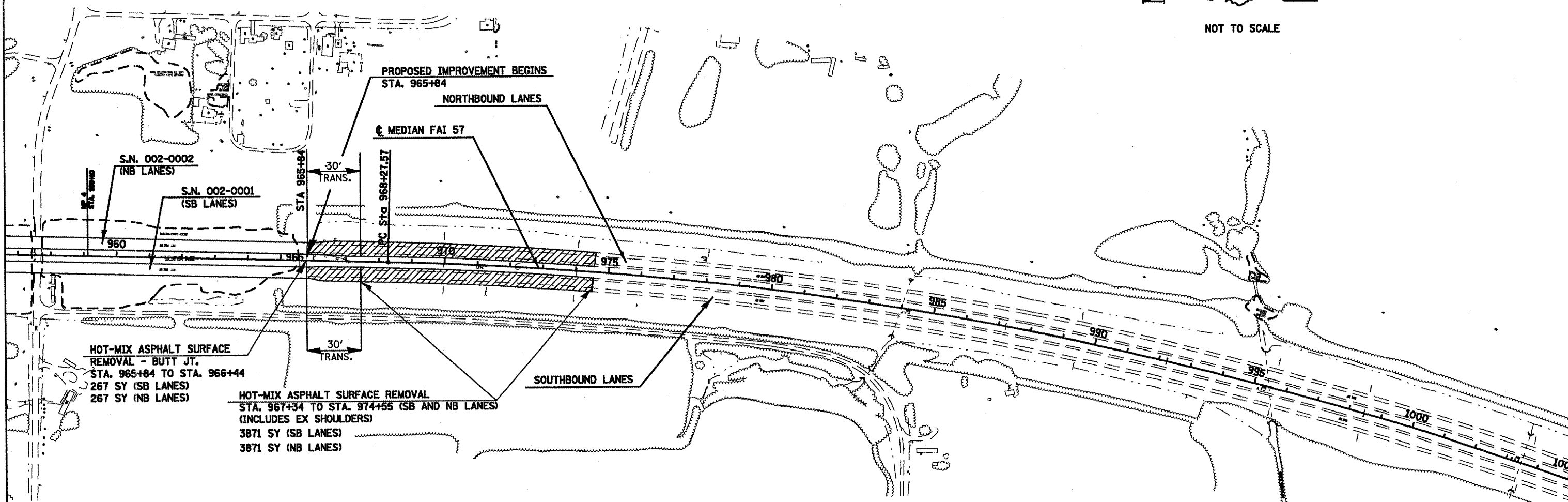


F.A. RTE.	SECTION	COUNTY	TOTAL SHEETS	SHEET NO.
57	02-G-1-1,1-2,1-3RS-1	ALEXANDER	22	10
STA.		TO STA.		
FED. ROAD DIST. NO.	ILLINOIS	FED. AID PROJECT		



NOT TO SCALE



S.N. 002-0002
(NB LANES)

S.N. 002-0001
(SB LANES)

PROPOSED IMPROVEMENT BEGINS
STA. 965+84

☐ MEDIAN FAI 57

HOT-MIX ASPHALT SURFACE
REMOVAL - BUTT JT.
STA. 965+84 TO STA. 966+44
267 SY (SB LANES)
267 SY (NB LANES)

HOT-MIX ASPHALT SURFACE REMOVAL
STA. 967+34 TO STA. 974+55 (SB AND NB LANES)
(INCLUDES EX SHOULDERS)
3871 SY (SB LANES)
3871 SY (NB LANES)

PROP. CURVE 10
PI STA. = 994+18.19
Δ = 25° 29' 24" (RT)
D = 0° 30' 01"
R = 11,453.52'
T = 2,590.62'
L = 5,095.50'
E = 289.33'
e = -----
T.R. = -----
S.E. RUN = -----
P.C. STA = 968+27.57
P.T. STA = 1019+23.07

NOTE:
FOR DETAIL OF EX SURFACE REMOVAL AND TRANSITIONS,
SEE SHEET 7.

PLOT DATE = 4/3/2007
FILE NAME = \\s\proj\98905\98905.dwg
PLOT SCALE = 1/8"=1'-0"
USER NAME = mcorcoran