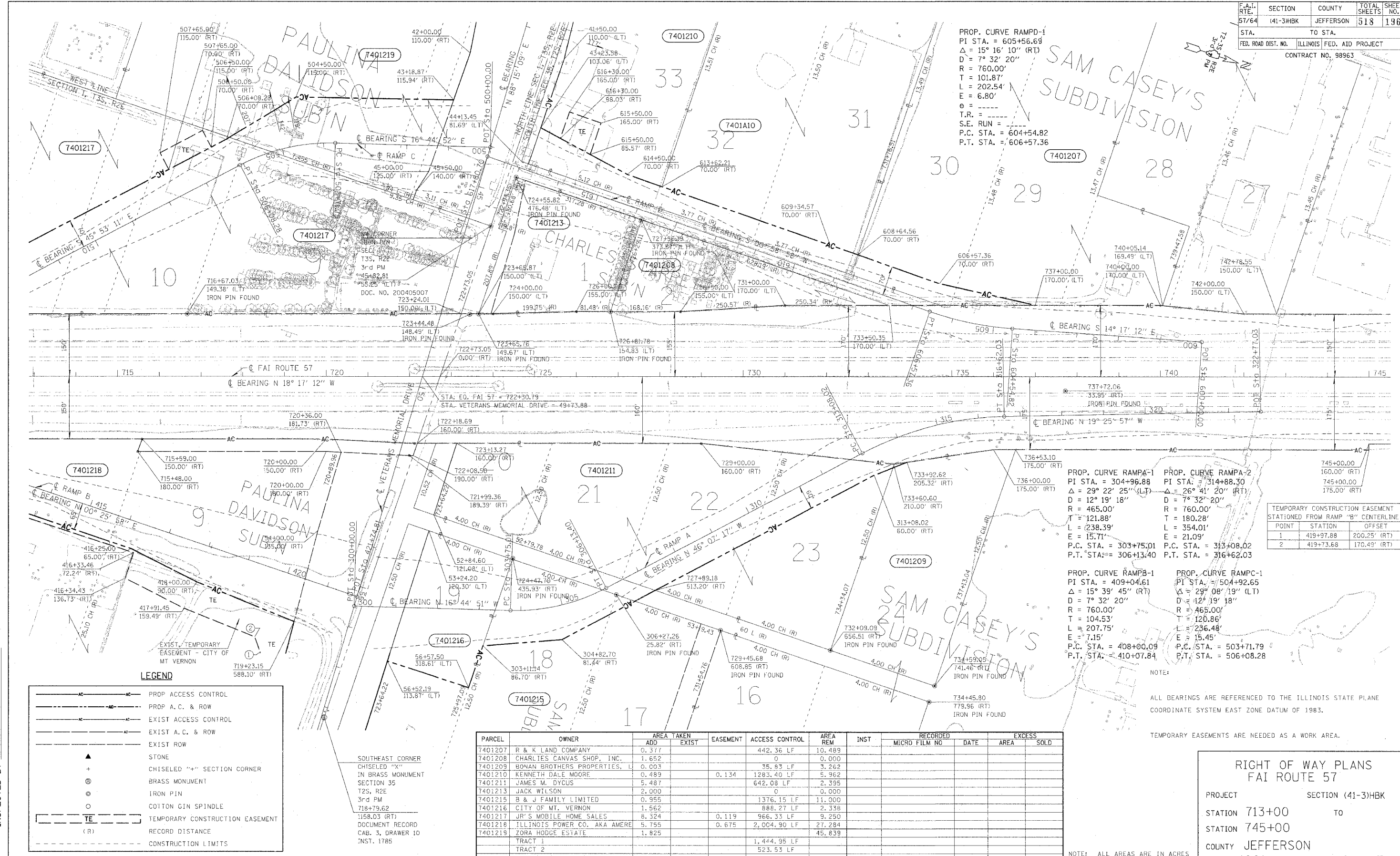


F.A.I. SHEET NO.	SECTION	COUNTY	TOTAL SHEETS	SHEET NO.
57/64	41-3HBK	JEFFERSON	518	196
STA.	TO STA.			
FED. ROAD DIST. NO.	ILLINOIS	FED. AID PROJECT		
CONTRACT NO. 98963				

PROP. CURVE RAMPD-1
 PI STA. = 605+56.69
 $\Delta = 15^\circ 16' 10''$ (RT)
 $D = 7^\circ 32' 20''$
 $R = 760.00'$
 $T = 101.87'$
 $L = 202.54'$
 $E = 6.80'$
 $e =$
 T.R. =
 S.E. RUN =
 P.C. STA. = 604+54.82
 P.T. STA. = 606+57.36

SAM CASEY'S
 SUBDIVISION



PROP. CURVE RAMPA-1
 PI STA. = 304+96.88
 $\Delta = 29^\circ 22' 25''$ (LT)
 $D = 12^\circ 19' 18''$
 $R = 465.00'$
 $T = 121.88'$
 $L = 238.39'$
 $E = 15.71'$
 P.C. STA. = 303+75.01
 P.T. STA. = 306+13.40

PROP. CURVE RAMPA-2
 PI STA. = 314+88.30
 $\Delta = 26^\circ 41' 20''$ (RT)
 $D = 7^\circ 32' 20''$
 $R = 760.00'$
 $T = 180.28'$
 $L = 354.01'$
 $E = 21.09'$
 P.C. STA. = 313+08.02
 P.T. STA. = 316+62.03

PROP. CURVE RAMPB-1
 PI STA. = 409+04.61
 $\Delta = 15^\circ 39' 45''$ (RT)
 $D = 7^\circ 32' 20''$
 $R = 760.00'$
 $T = 104.53'$
 $L = 207.75'$
 $E = 7.15'$
 P.C. STA. = 408+00.09
 P.T. STA. = 410+07.84

PROP. CURVE RAMP C-1
 PI STA. = 504+92.65
 $\Delta = 29^\circ 08' 19''$ (LT)
 $D = 12^\circ 19' 18''$
 $R = 465.00'$
 $T = 120.86'$
 $L = 236.48'$
 $E = 15.45'$
 P.C. STA. = 503+71.79
 P.T. STA. = 506+08.28

POINT	STATION	OFFSET
1	419+97.88	200.25' (RT)
2	419+73.68	170.49' (RT)

NOTE:
 ALL BEARINGS ARE REFERENCED TO THE ILLINOIS STATE PLANE COORDINATE SYSTEM EAST ZONE DATUM OF 1983.
 TEMPORARY EASEMENTS ARE NEEDED AS A WORK AREA.

LEGEND

— AC — AC	PROP ACCESS CONTROL
— AC — AC	PROP A.C. & ROW
— AC — AC	EXIST ACCESS CONTROL
— AC — AC	EXIST A.C. & ROW
— AC — AC	EXIST ROW
▲	STONE
+	CHISELED "X" SECTION CORNER
⊕	BRASS MONUMENT
⊙	IRON PIN
⊙	T2S, R2E
⊙	3rd PM
⊙	COTTON GIN SPINDLE
⊙	718+79.62
⊙	1158.03 (RT)
— TE —	TEMPORARY CONSTRUCTION EASEMENT
(R)	RECORD DISTANCE
- - -	CONSTRUCTION LIMITS

PARCEL	OWNER	AREA TAKEN		EASEMENT	ACCESS CONTROL	AREA REM	INST	RECORDED		EXCESS	
		ADD	EXIST					MICRO FILM NO	DATE	AREA	SOLD
7401207	R & K LAND COMPANY	0.377			442.36 LF	10.489					
7401208	CHARLES CANVAS SHOP, INC.	1.652			0	0.000					
7401209	BONAN BROTHERS PROPERTIES, L	0.003			35.83 LF	3.262					
7401210	KENNETH DALE MOORE	0.489		0.134	1283.40 LF	5.962					
7401211	JAMES M. DYCUS	5.487			642.08 LF	2.395					
7401213	JACK WILSON	2.000			0	0.000					
7401215	B & J FAMILY LIMITED	0.955			1376.15 LF	11.000					
7401216	CITY OF MT. VERNON	1.562			888.27 LF	2.338					
7401217	JR'S MOBILE HOME SALES	8.324		0.119	966.33 LF	9.250					
7401218	ILLINOIS POWER CO. AKA AMERE	5.755		0.675	2,004.90 LF	27.284					
7401219	ZORA HODGE ESTATE	1.825				45.839					
	TRACT 1				1,444.95 LF						
	TRACT 2				523.53 LF						
7401A10	KENNETH DALE MOORE	0.582			497.66 LF	9.290					

RIGHT OF WAY PLANS
FAI ROUTE 57
 PROJECT SECTION (41-3)HBK
 STATION 713+00 TO
 STATION 745+00
 COUNTY JEFFERSON
 SCALE 100' SHEET 4 OF 7

\$DATE\$\$
 DGN-SPEC
 \$FILE\$
 DRAWN BY
 WRITTEN BY
 CHECKED BY
 INSPECTED BY
 JOB NO. R 97-001-04