

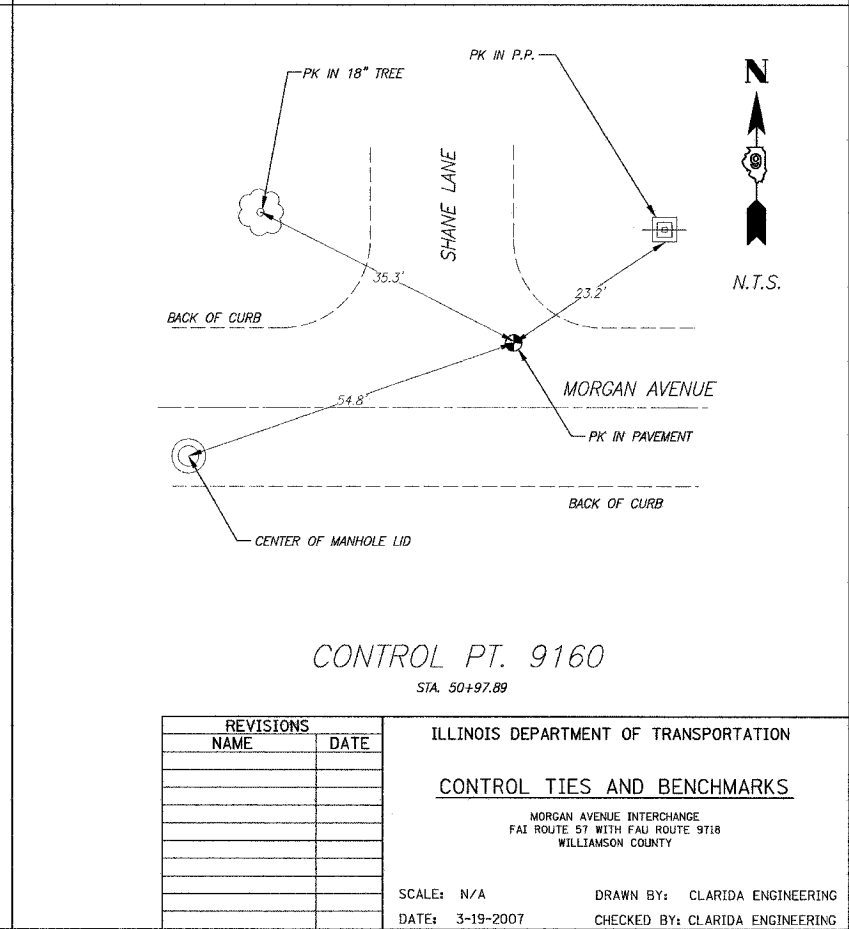
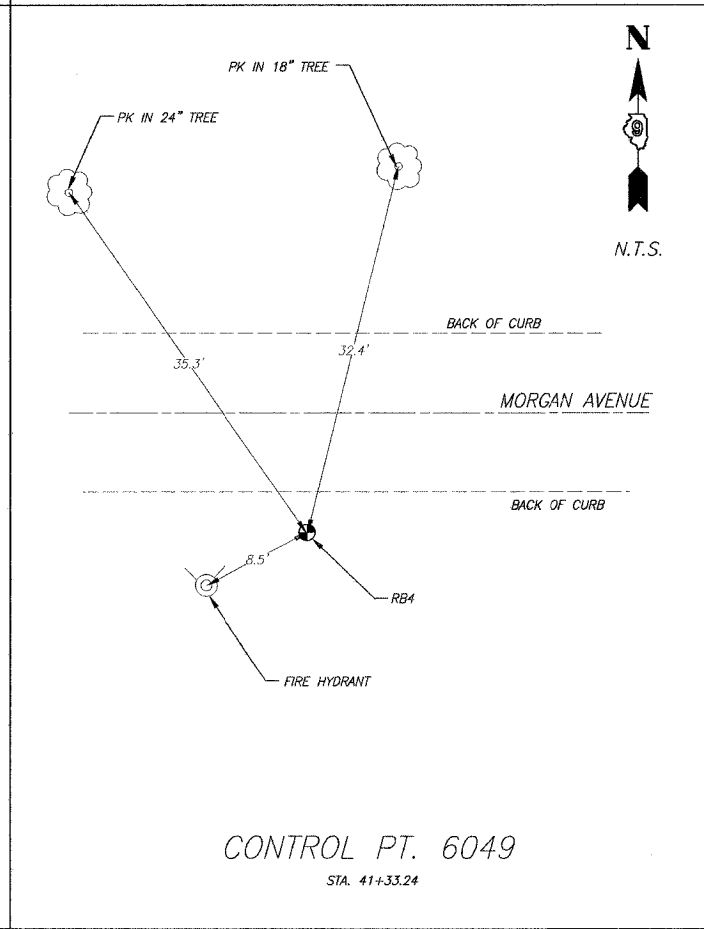
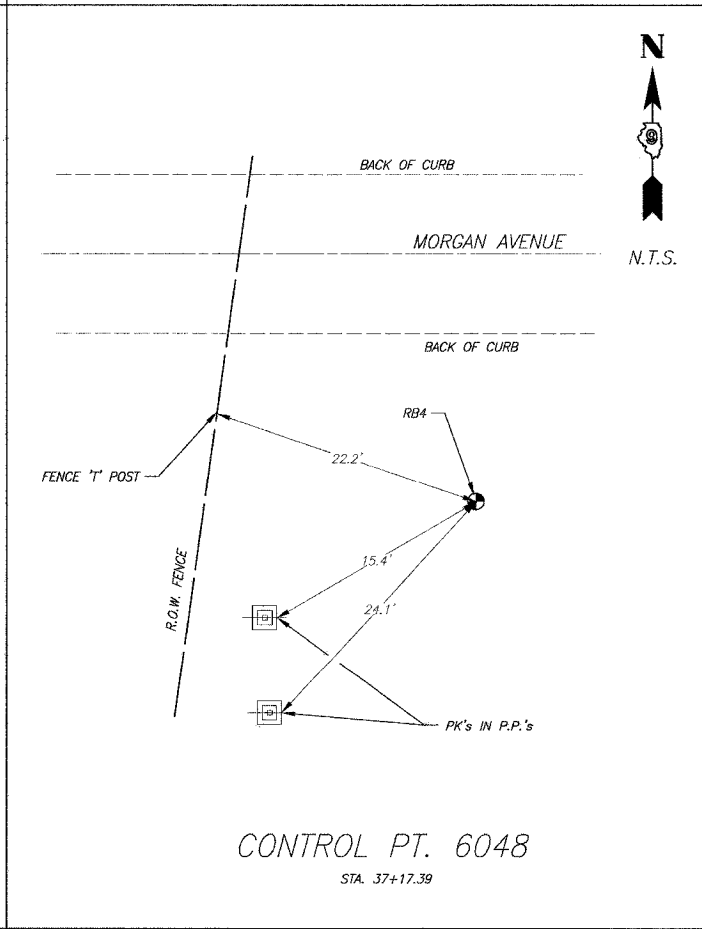
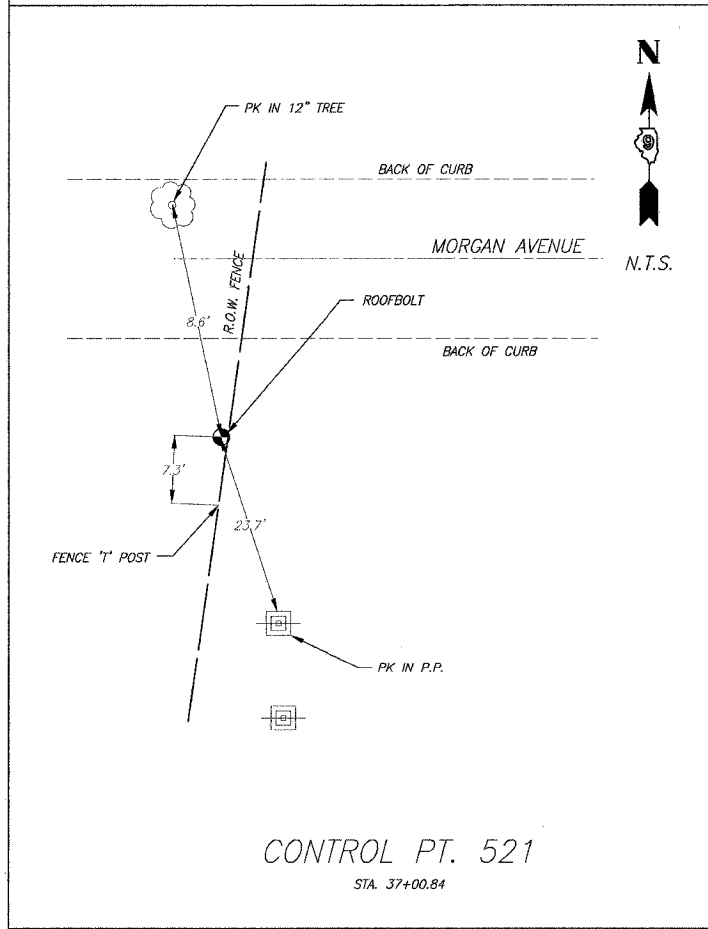
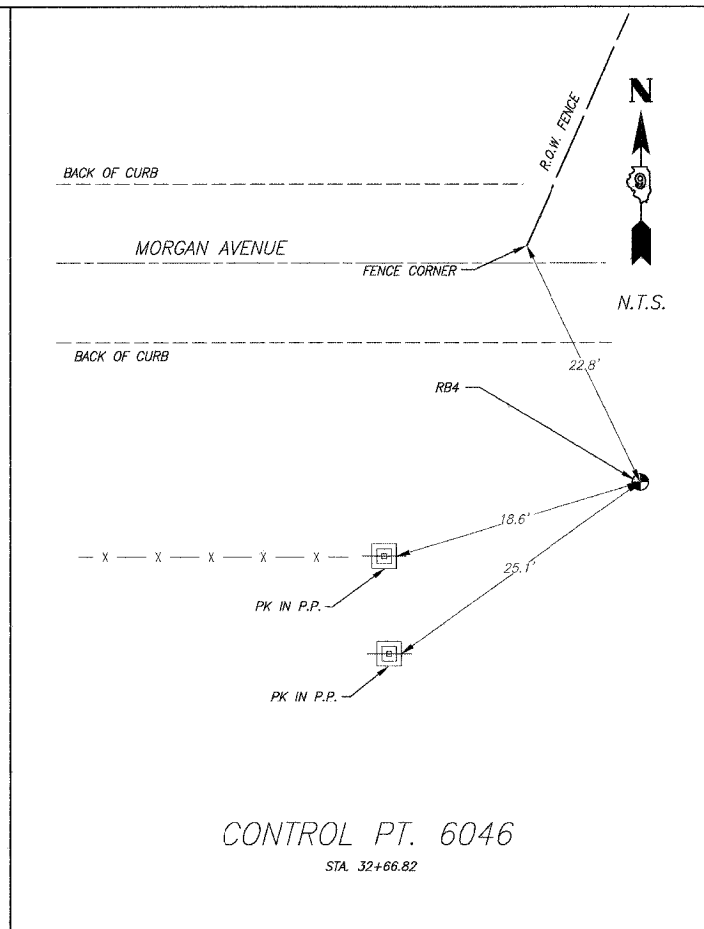
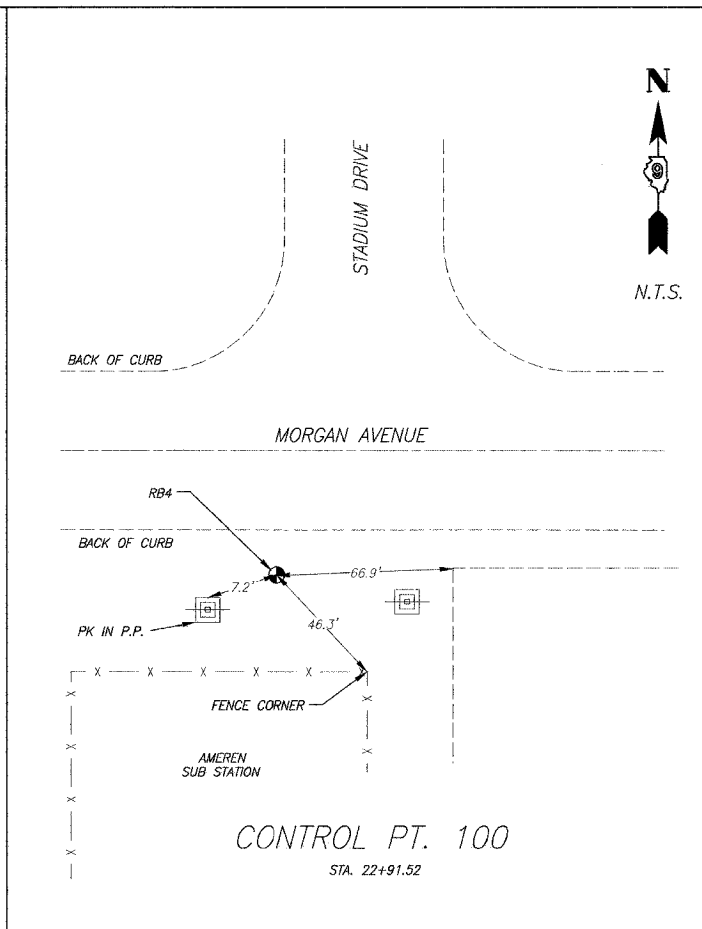
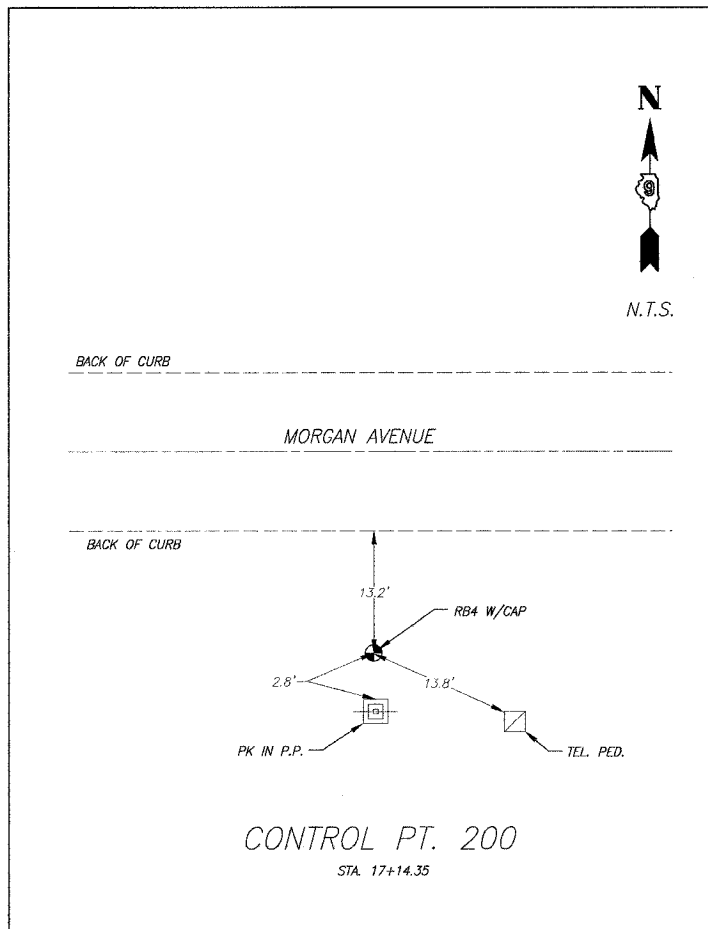
F.A.I. RTE.	SECTION	COUNTY	TOTAL SHEETS	SHEET NO.
57	IX1-6-2HKB	WILLIAMSON	272	22
STA. TO STA.		FED. ROAD DIST. NO. 9 ILLINOIS FED. AID PROJECT		

CONTROL POINTS
MORGAN AVENUE AND F.A.I. RTE. 57 PROJECT

HORIZONTAL: GPS 1983 (1997 ADJUSTMENT), ILL EAST ZONE
VERTICLE: NAVD 88

POINT	NORTHING	EASTING	ELEVATION	TYPE	STATION	OFFSET
CONTROL POINTS ALONG MORGAN AVE & WEST OF F.A.I. 57						
6040	393,378.244	802,034.966	474.93	RB4	15+18.22	-227.1'
200	393,114.096	802,225.882	469.99	RB4	17+14.35	33.19'
100	393,106.267	802,803.015	470.62	RB4	22+91.52	29.57'
6046	393,089.306	803,777.462	485.29	RB4	32+66.82	53.13'
CONTROL POINTS ALONG MORGAN AVE & EAST OF F.A.I. 57						
521	393,097.842	804,211.832	xxxx	R-BOLT	37+00.84	36.14'
6048	393,077.657	804,227.459	475.07	RB4	37+17.39	55.72'
6049	393,067.969	804,640.509	468.02	RB4	41+33.24	34.93'
9160	393,062.355	805,607.218	470.10	PK	50+97.89	-2.15'
CONTROL POINTS ALONG C/L OF F.A.I. 57 MEDIAN						
9731	395,504.325	804,757.767	497.51	RB5	408+83.56	-2.24'
MA103	394,413.399	804,398.725	478.72	RB5	1461+58.94	-0.15'
MA1472	393,419.256	804,073.210	470.94	RB5	1472+04.98	0.15'
MA102	392,516.799	803,778.245	468.67	RB5	1481+54.41	-0.06'

NO TIES TO CONTROL POINTS IN THE MEDIAN
OF F.A.I. ROUTE 57



REVISIONS	
NAME	DATE

ILLINOIS DEPARTMENT OF TRANSPORTATION
CONTROL TIES AND BENCHMARKS
MORGAN AVENUE INTERCHANGE
FAI ROUTE 57 WITH FAI ROUTE 9718
WILLIAMSON COUNTY

SCALE: N/A DRAWN BY: CLARIDA ENGINEERING
DATE: 3-19-2007 CHECKED BY: CLARIDA ENGINEERING

PLOT DATE = 3/19/2007
FILE NAME = P:\148620\dm\0106020\hcs01.dgn
PLOT SCALE = 200.0000 / 1 IN.
USER NAME = dhoerner