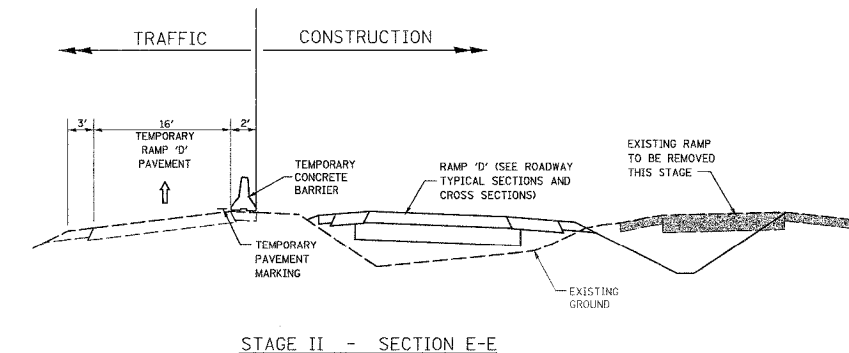
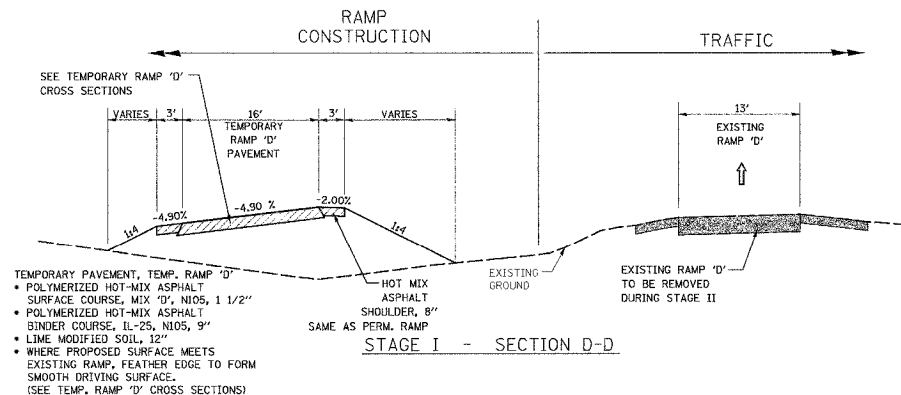
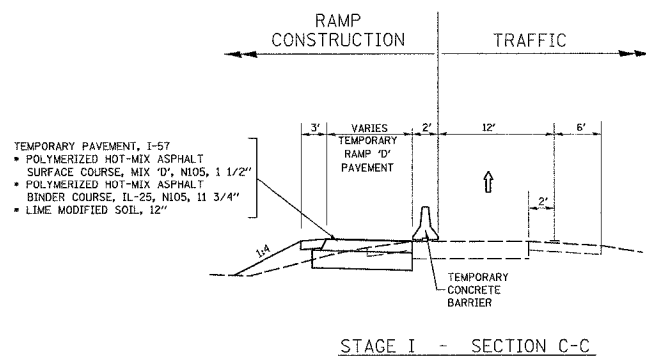
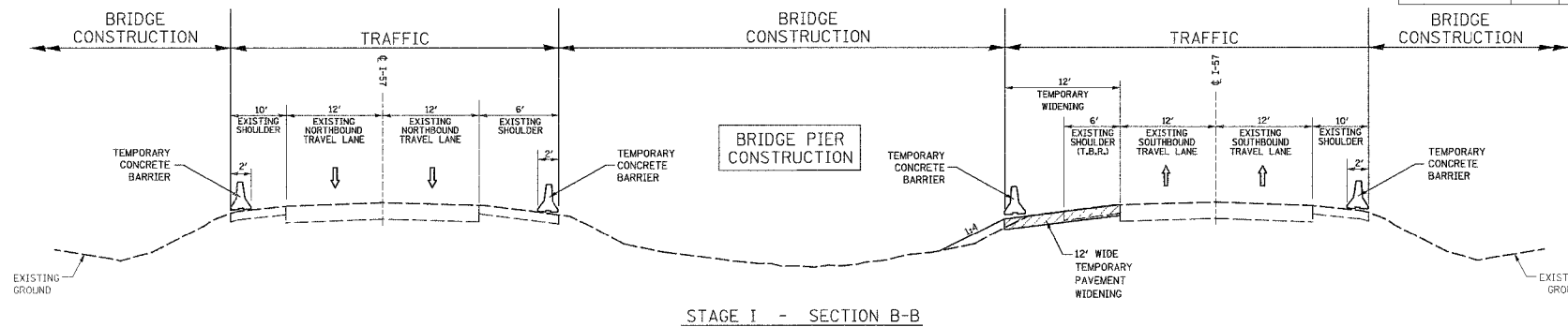
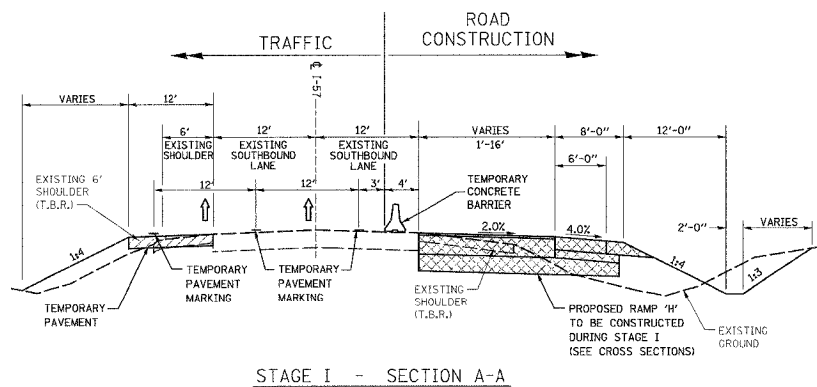


F.A.I. RTE.	SECTION	COUNTY	TOTAL SHEETS	SHEET NO.
57	(X1-6-2)HBK	WILLIAMSON	272	23
STA.		TO STA.		
FED. ROAD DIST. NO. 9		ILLINOIS FED. AID PROJECT		



SUGGESTED SEQUENCE OF CONSTRUCTION:

PRE-STAGE I

PRIOR TO BEGINNING BRIDGE CONSTRUCTION, CONSTRUCT TEMPORARY PAVEMENT FOR THE TEMPORARY CONCRETE BARRIER AT PROPOSED MORGAN AVENUE BRIDGE. PLACE TEMPORARY CONCRETE BARRIER AND TEMPORARY IMPACT ATTENUATORS ON I-57 PER PLANS. UTILIZE HIGHWAY STANDARD 701101. SEE GENERAL NOTE 1 IF LANE CLOSURES ARE REQUIRED.

STAGE I

- EXISTING I-57 TRAFFIC WILL CONTINUE TO UTILIZE EXISTING RAMP TO IL. 13.
- CLOSE MORGAN AVENUE TO LOCAL TRAFFIC PER PLANS. UTILIZE HIGHWAY STANDARD BLR 21.
- CONSTRUCT TEMPORARY PAVEMENT FOR I-57 LANE SHIFT AT RAMP "H" CONSTRUCTION. PLACE TEMPORARY CONCRETE BARRIER AND IMPACT ATTENUATORS PER PLANS. UTILIZE HIGHWAY STANDARD 701400 AND 701401 ON I-57.
- CONSTRUCT RAMP "H" FROM I-57 TO MORGAN AVENUE INTERSECTION AND RAMP "D" FROM I-57 TO STATION 120+00.
- CONSTRUCT TEMPORARY RAMP "D" FROM INTERSECTION WITH EXISTING RAMP TO INTERSECTION WITH IL. 13. UTILIZE HIGHWAY STANDARD 701101 TO CONSTRUCT PAVEMENT ADJACENT TO IL. 13.
- INSTALL TEMPORARY TRAFFIC SIGNALS AT IL. 13 UTILIZING HIGHWAY STANDARD 701101.

STAGE II

- RE-ROUTE EXISTING RAMP TRAFFIC TO TEMPORARY RAMP "D".
- CONSTRUCT REMAINDER OF RAMP "D". (STATION 120+00 TO IL. ROUTE 13 INTERSECTION) UTILIZE HIGHWAY STANDARD 701101 ON IL. ROUTE 13 AND STANDARD 701421 TO CLOSE ONE LANE WHILE PAVEMENT IS CONSTRUCTED BETWEEN IL 13 AND RAMP D.
- REMOVE EXISTING RAMP WHERE NOTED IN THE PLANS, INCLUDING THE TEMPORARY TRAFFIC SIGNALS. UTILIZE HIGHWAY STANDARD 701101 ON IL. ROUTE 13.

STAGE III

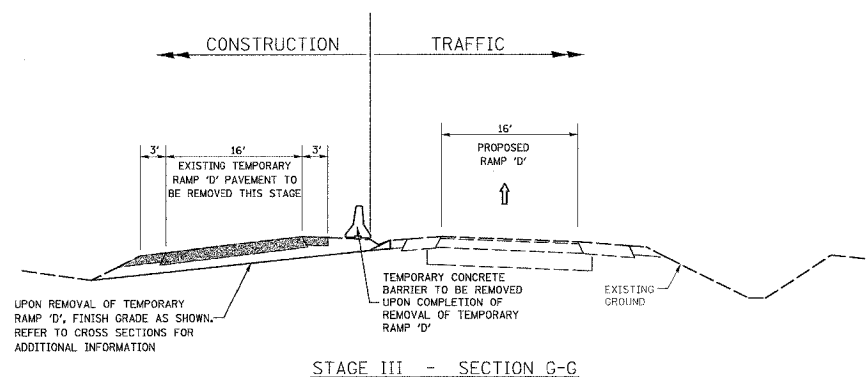
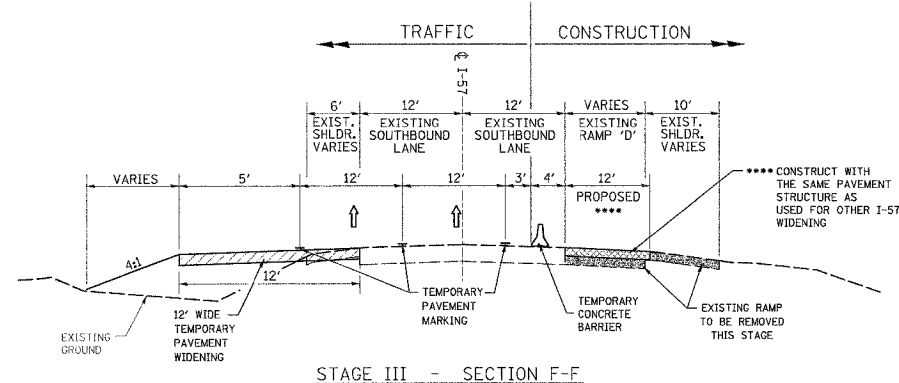
- RE-ROUTE RAMP TRAFFIC TO COMPLETED RAMP "D". RAMP "H" REMAINS CLOSED TO TRAFFIC UNTIL MORGAN AVENUE WORK IS COMPLETED.
- UTILIZING HIGHWAY STANDARD 701101 ON I-57, CONSTRUCT TEMPORARY PAVEMENT FOR I-57 LANE SHIFT NEAR EXISTING RAMP REMOVAL. PLACE TEMPORARY CONCRETE BARRIER AND IMPACT ATTENUATORS PER PLANS. REMOVE REMAINDER OF RAMP.
- UPON COMPLETION OF ALL WORK, REMOVE TEMPORARY PAVEMENT MARKINGS UTILIZING WORK ZONE PAVEMENT MARKING REMOVAL PAY ITEM. REMOVE BARRIERS AND BARRICADES.

STAGE CONSTRUCTION GENERAL NOTES:

- TWO LANES OF TRAFFIC EACH DIRECTION SHALL BE MAINTAINED ON I-57 BETWEEN THE HOURS OF 7AM TO 7PM. I-57 LANE CLOSURES SHALL BE KEPT TO AN ABSOLUTE MINIMUM AND SHALL BE IMPLEMENTED IN ACCORDANCE WITH TRAFFIC CONTROL STANDARD 701401 AND SHALL OCCUR ONLY BETWEEN THE HOURS OF 7:00PM TO 7:00AM. MESSAGE BOARDS, ROAD CONSTRUCTION AHEAD, AND SPEED ZONE SIGNING AS DEPICTED IN STAGE I TRAFFIC CONTROL, TO REMAIN THROUGHOUT DURATION OF PROJECT.
- RAMP TRAFFIC FROM SB I-57 TO IL ROUTE 13 SHALL REMAIN OPEN THROUGHOUT THE DURATION OF THE PROJECT.
- MORGAN AVENUE SHALL BE CLOSED TO TRAFFIC THROUGHOUT THE DURATION OF THE PROJECT. UTILIZE HIGHWAY STANDARD BLR 22 TO CLOSE THE ROAD TO THROUGH TRAFFIC AT EACH END OF THE MORGAN AVENUE WORK. (NOTE THAT THE MORGAN AVENUE BRIDGE CONSTRUCTION AND MORGAN AVENUE ROAD RECONSTRUCTION WILL PROCEED THROUGHOUT THE DURATION OF THE VARIOUS RAMP STAGES OF CONSTRUCTION.)
- CONTRACTOR SHALL PROVIDE CONTINUOUS ACCESS TO ALL BUSINESSES AND PRIVATE ENTRANCES ALONG MORGAN AVENUE THROUGHOUT THE DURATION OF THE PROJECT.
- THE CONTRACTOR SHALL REMOVE DURING ANY SINGLE LANE CLOSURE EVENT ONLY AS MUCH OF THE EXISTING I-57 SHOULDERS THAT CAN BE REPLACED WITH TEMPORARY PAVEMENT IN THAT SAME LANE CLOSURE EVENT. THERE SHALL BE NO OPEN EXCAVATIONS IMMEDIATELY ADJACENT TO AND ABUTTING THE I-57 TRAVEL LANES UNLESS SUCH IS CONDUCTED DURING A LANE CLOSURE PERIOD OR COMPLETED BEHIND TEMPORARY CONCRETE BARRIER.

STAGE CONSTRUCTION LEGEND

- TEMPORARY PAVEMENT TO BE CONSTRUCTED IN THIS STAGE
- PROPOSED PERMANENT PAVEMENT CONSTRUCTED IN THIS STAGE
- REMOVAL OF EXISTING PAVEMENT



REVISIONS		ILLINOIS DEPARTMENT OF TRANSPORTATION	
NAME	DATE	STAGE CONSTRUCTION TYPICAL SECTIONS AND SEQUENCE OF CONSTRUCTION	
		SHEET 1 OF 9	
		MORGAN AVENUE INTERCHANGE FAU ROUTE 57 WITH FAU ROUTE 9718 WILLIAMSON COUNTY	
		SCALE: NONE	DRAWN BY: DH
		DATE: 4-26-2007	CHECKED BY: RD