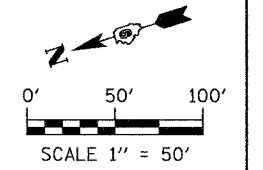
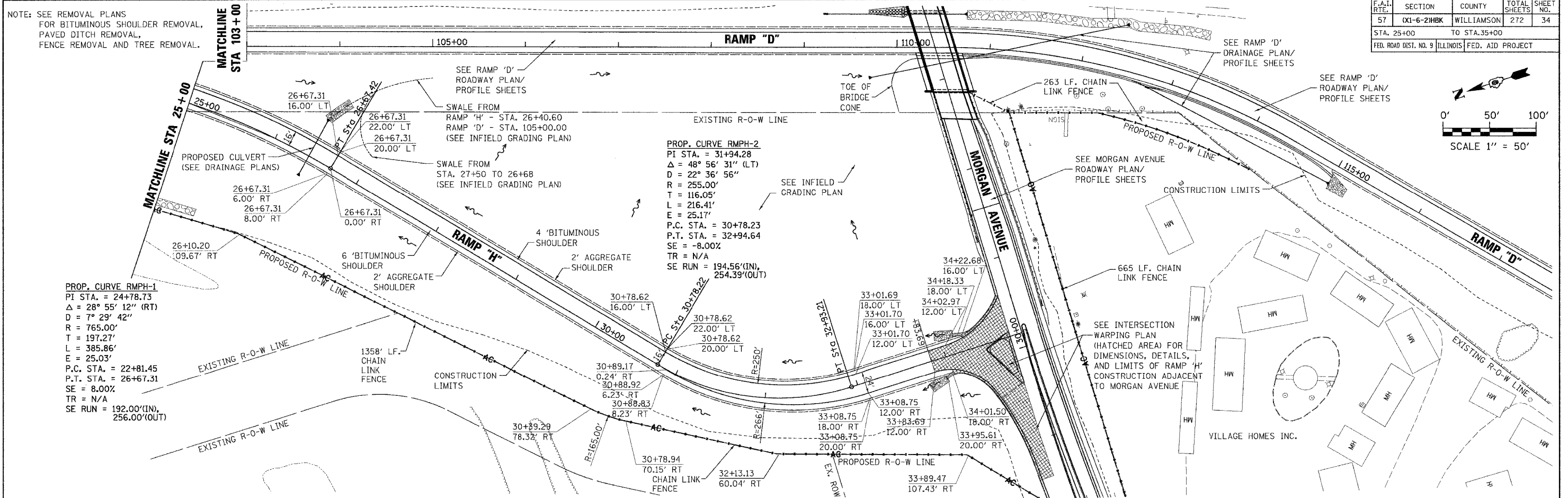


F.A.I. RTE.	SECTION	COUNTY	TOTAL SHEETS	SHEET NO.
57	OXI-6-2HKB	WILLIAMSON	272	34
STA. 25+00		TO STA. 35+00		
FED. ROAD DIST. NO. 9		ILLINOIS		FED. AID PROJECT



NOTE: SEE REMOVAL PLANS FOR BITUMINOUS SHOULDER REMOVAL, PAVED DITCH REMOVAL, FENCE REMOVAL AND TREE REMOVAL.



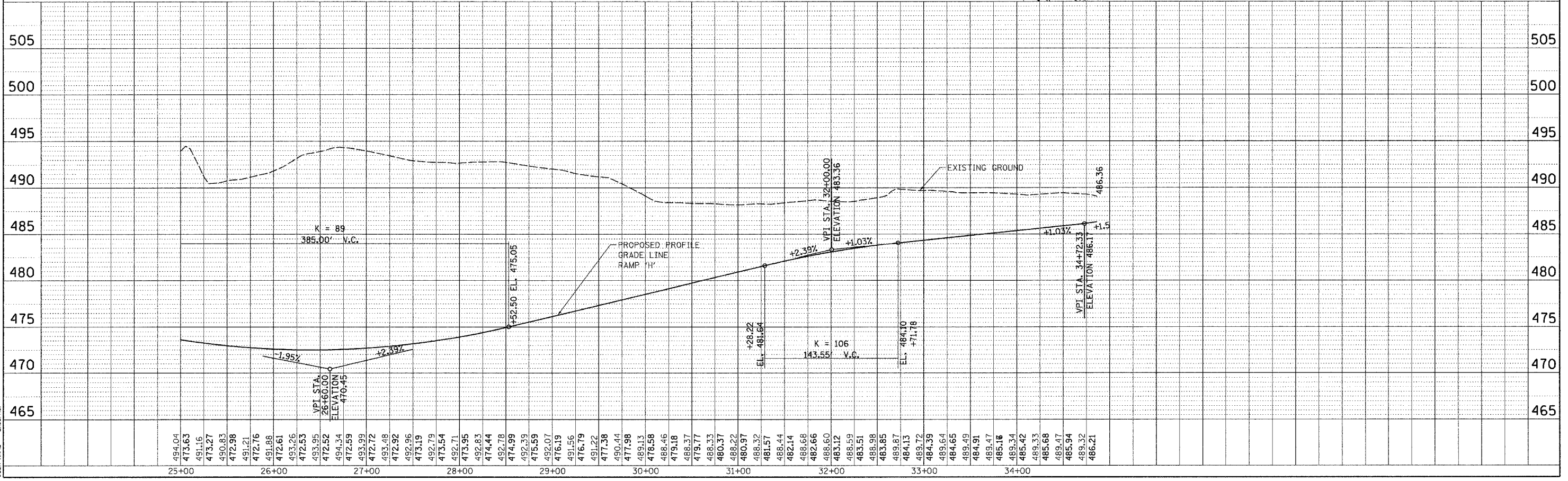
PROP. CURVE RMPH-1
 PI STA. = 24+78.73
 $\Delta = 28^\circ 55' 12''$ (RT)
 $D = 7^\circ 29' 42''$
 $R = 765.00'$
 $T = 197.27'$
 $L = 385.86'$
 $E = 25.03'$
 P.C. STA. = 22+81.45
 P.T. STA. = 26+67.31
 $SE = 8.00\%$
 $TR = N/A$
 $SE\ RUN = 192.00'(IN), 256.00'(OUT)$

PROP. CURVE RMPH-2
 PI STA. = 31+94.28
 $\Delta = 48^\circ 56' 31''$ (LT)
 $D = 22^\circ 36' 56''$
 $R = 255.00'$
 $T = 116.05'$
 $L = 216.41'$
 $E = 25.17'$
 P.C. STA. = 30+78.23
 P.T. STA. = 32+94.64
 $SE = -8.00\%$
 $TR = N/A$
 $SE\ RUN = 194.56'(IN), 254.39'(OUT)$

DATE	BY	REVISION

DATE	BY	REVISION

PLOT DATE = 3/21/2007
 FILE NAME = P:\06000\06000.dgn
 PLOT SCALE = E:\06000 / IN.
 USER NAME = channer



RAMP "H" PLAN & PROFILE STA 25+00 TO 35+00