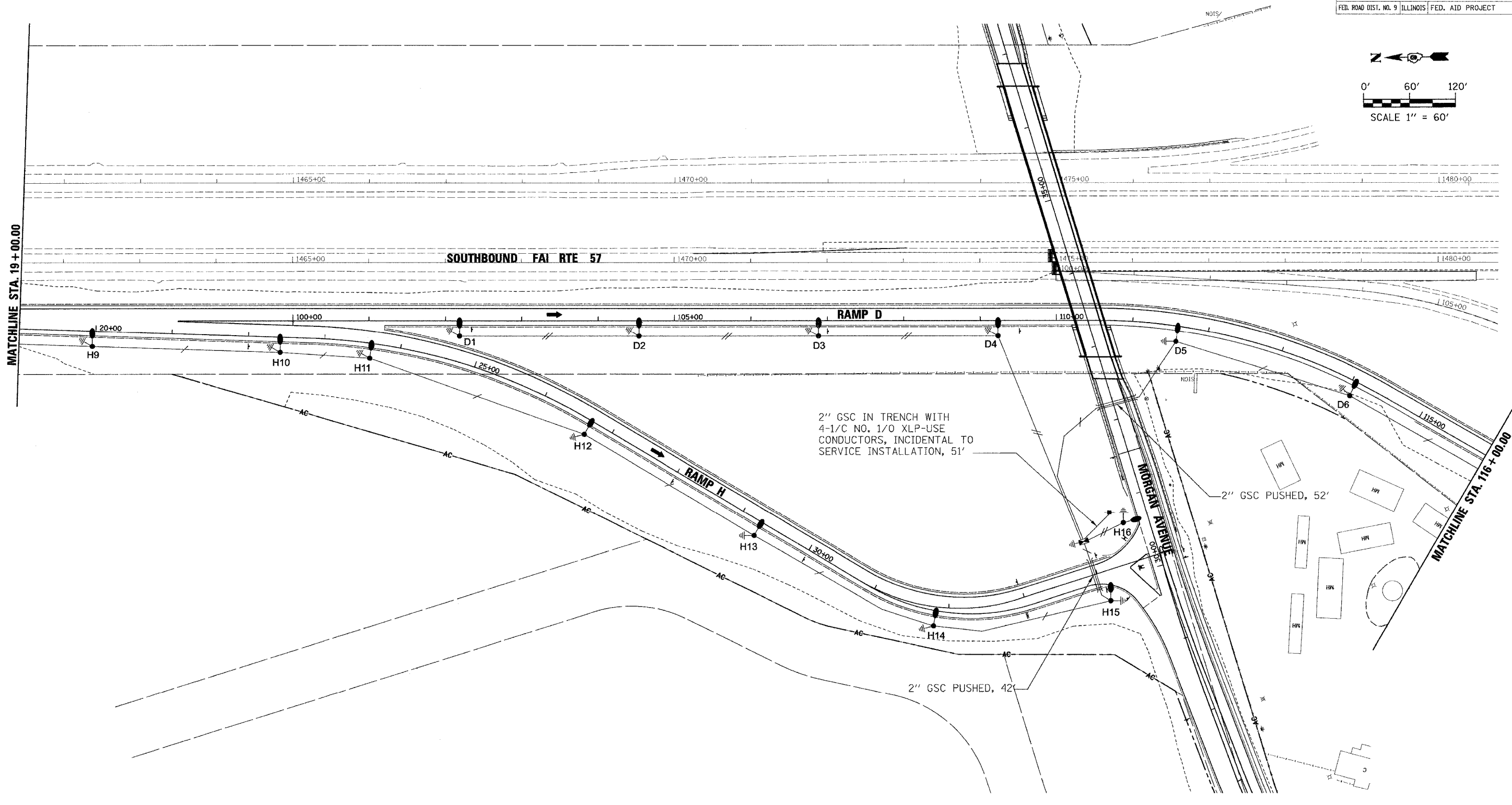
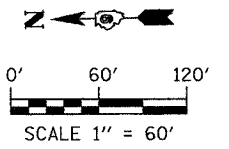


F.A.I. RTE.	SECTION	COUNTY	TOTAL SHEETS	SHEET NO.
57	04-0009700BR	WILLIAMSON	272	77
STA. TO STA.		FED. ROAD DIST. NO. 9 ILLINOIS FED. AID PROJECT		



2" GSC IN TRENCH WITH 4-1/2" NO. 1/0 XLP-USE CONDUCTORS, INCIDENTAL TO SERVICE INSTALLATION, 51'

2" GSC PUSHED, 52'

2" GSC PUSHED, 42'

LEGEND

- ELECTRIC SERVICE INSTALLATION
- LIGHTING CONTROLLER
- 400W HPS LUMINAIRE & 50' MH POLE WITH 15' MA
- ⊥ GROUND ELECTRODE
- UNIT DUCT, 2"X1/2" & 1"X6"
- UNIT DUCT, 2"X1/2" & 1"X6"

REVISIONS	
NAME	DATE

ILLINOIS DEPARTMENT OF TRANSPORTATION

LIGHTING PLAN
MORGAN AVENUE INTERCHANGE
FAI ROUTE 57 WITH FAI ROUTE 971B
WILLIAMSON COUNTY

2 OF 9

SCALE: N/A
DATE: 3-19-2007

DRAWN BY: BLR
CHECKED BY: RSD

PLOT DATE = 3/19/2007
FILE NAME = P:\046880\46880.dgn
PLOT SCALE = BR0000 / IN.
USER NAME = chesner