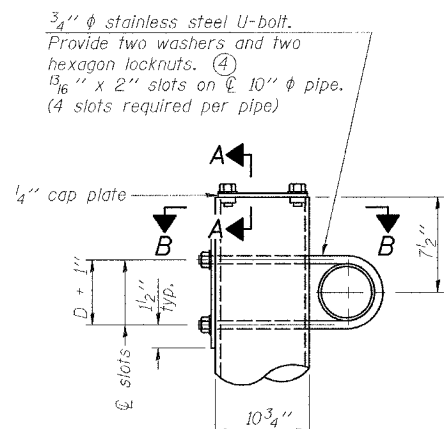


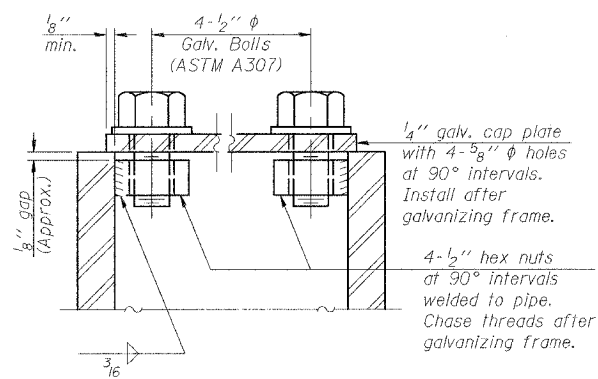
F.A.I. RTE.	SECTION	COUNTY	TOTAL SHEETS	SHEET NO.
57	0X1-6-2H8K	WILLIAMSON	272	111
STA.	TO STA.			
FED. ROAD DIST. NO. 9	ILLINOIS	FED. AID PROJECT		

Support Design Loads: See Base Sheet OS-A-1 for design and loading criteria.  
 Load combinations checked include deadload plus:  
 a) 100% wind normal to sign, 20% parallel to sign  
 b) 60% wind normal to sign, 30% parallel to sign

- In lieu of fabricated handhole frame as shown, may cut from 2" plate (rolling direction vertical). All cut faces to be ground to ANSI Roughness of 500  $\mu$ m or less.
- Galvanizing vent holes of adequate size shall be provided on underside at each end of bracing pipes. Alternately, holes may be provided in wall of pipe column. All vent holes shall be drilled and de-burred, typ.
- Steel pipe, plate, carbon steel handhole covers and rolled sections shall be hot dip galvanized after fabrication. Painting is not permitted. See Base Sheet OS-A-1.
- See General Notes for fasteners.
- Dimensions shown are based on selection criteria in the Sign Structures Manual. Nonstandard applications must have dimensions verified or amended as appropriate.
- "H" based on 15'-0" or actual sign height, whichever is greater.

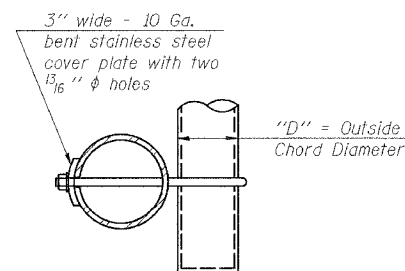


DETAIL A

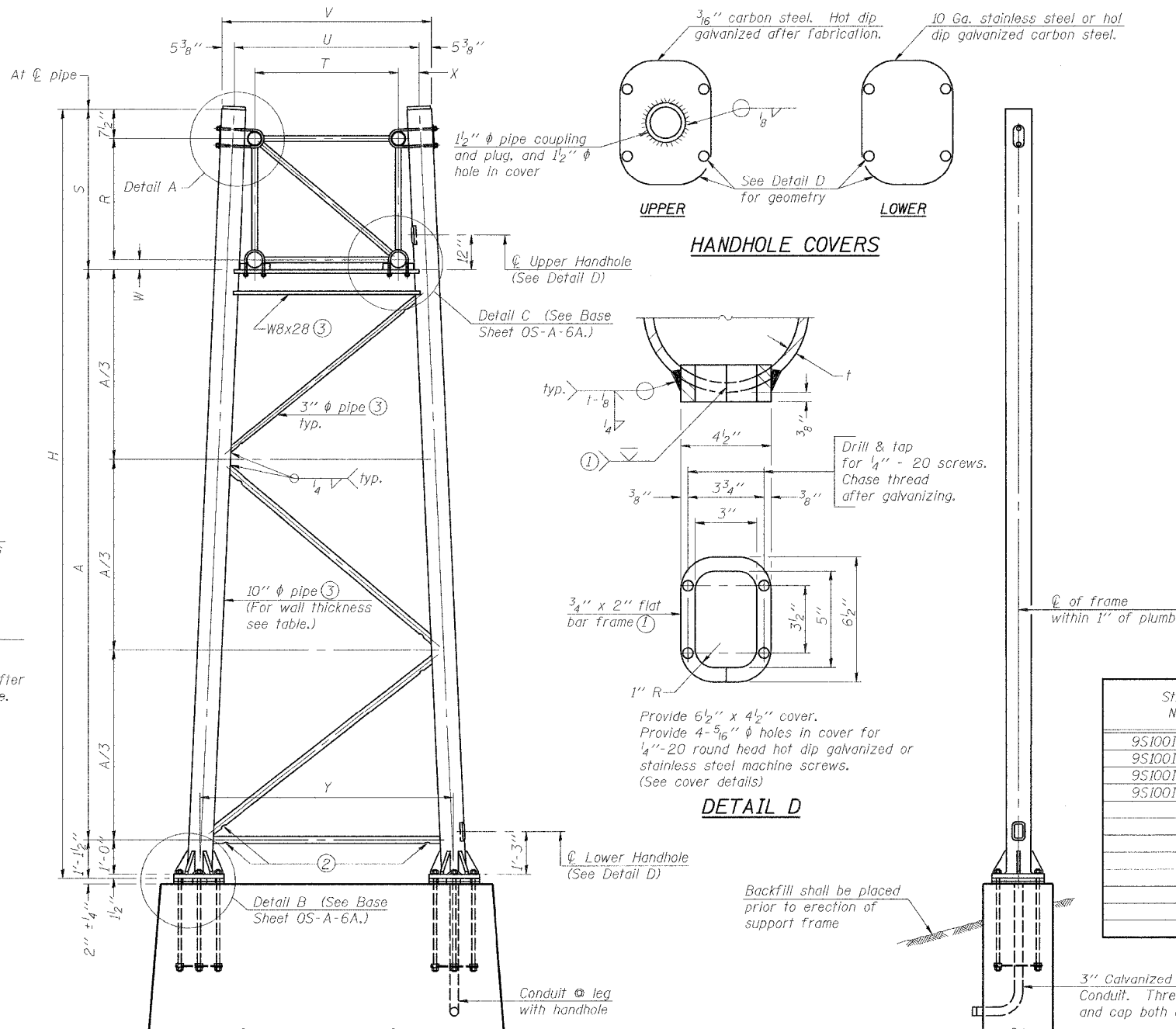


SECTION A-A

As an alternate to bolts, may use galvanized drive-fit caps installed after galvanizing frame.



SECTION B-B



For Foundation Details, see base sheet OS-F3 (Spread Footing) or OS4-F3 (Drilled Shaft).

SIDE ELEVATION

10"  $\phi$  PIPE TRUSS SUPPORT FRAME

Truss Type	Dimensions							
	R	S	T	U	V	W	X	Y
I-A	4'-6"	5'-5 1/2"	4'-0"	5'-6"	6'-4 3/4"	4"	9"	8'-3"
II A ⑤	5'-3"	6'-3 1/4"	4'-6"	6'-1"	6'-11 3/4"	4 3/4"	9 1/2"	8'-3"

NUMBER	REVISION	DATE

Structure Number	Station	Support		Truss Type	Pipe Wall Thickness	H (6)	A
		Left	Right				
9S1001057R055.5	348+50.00	X		I-A	0.365	29'-1 1/2"	22'-6 1/8"
9S1001057R055.5	348+50.00		X	I-A	0.365	31'-0"	24'-5"
9S1001057R054.5	403+52.04	X		II-A	0.365	29'-3"	22'-4 1/4"
9S1001057R054.5	403+52.04		X	II-A	0.365	28'-8 3/4"	21'-4"

END ELEVATION

ILLINOIS DEPARTMENT OF TRANSPORTATION  
**OVERHEAD SIGN STRUCTURES  
 SUPPORT FRAME FOR ALUMINUM TRUSS**

MORGAN AVENUE INTERCHANGE  
 FAI ROUTE 57 WITH FAU ROUTE 9718  
 WILLIAMSON COUNTY

SHEET 5 OF 11

SCALE: N/A DATE: 3-19-2007

PLOT DATE = 3/22/2007  
 FILE NAME = P:\102020\102020.dwg  
 PLOT SCALE = 8.128000 \* 1 / IN.  
 USER NAME = dhoerner