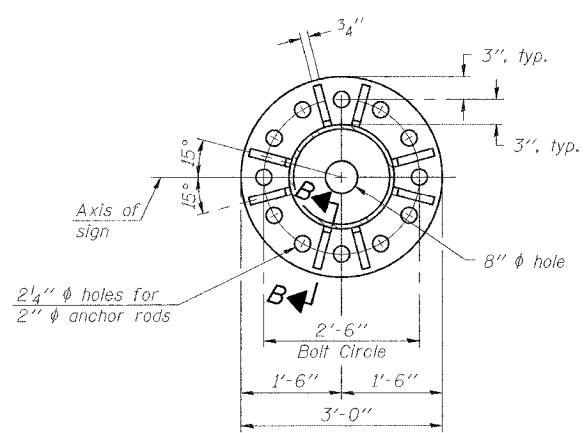
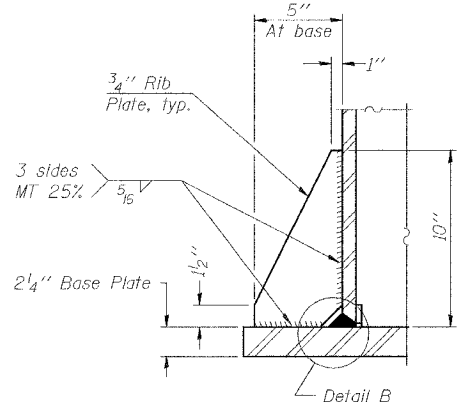


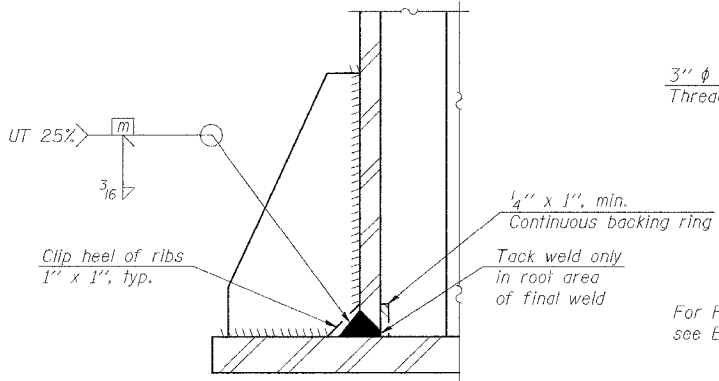
F.A.I. RTE.	SECTION	COUNTY	TOTAL SHEETS	SHEET NO.
57	OX1-6-2HKB	WILLIAMSON	272	122
STA.	TO STA.			
FED. ROAD DIST. NO. 9	ILLINOIS	FED. AID PROJECT		



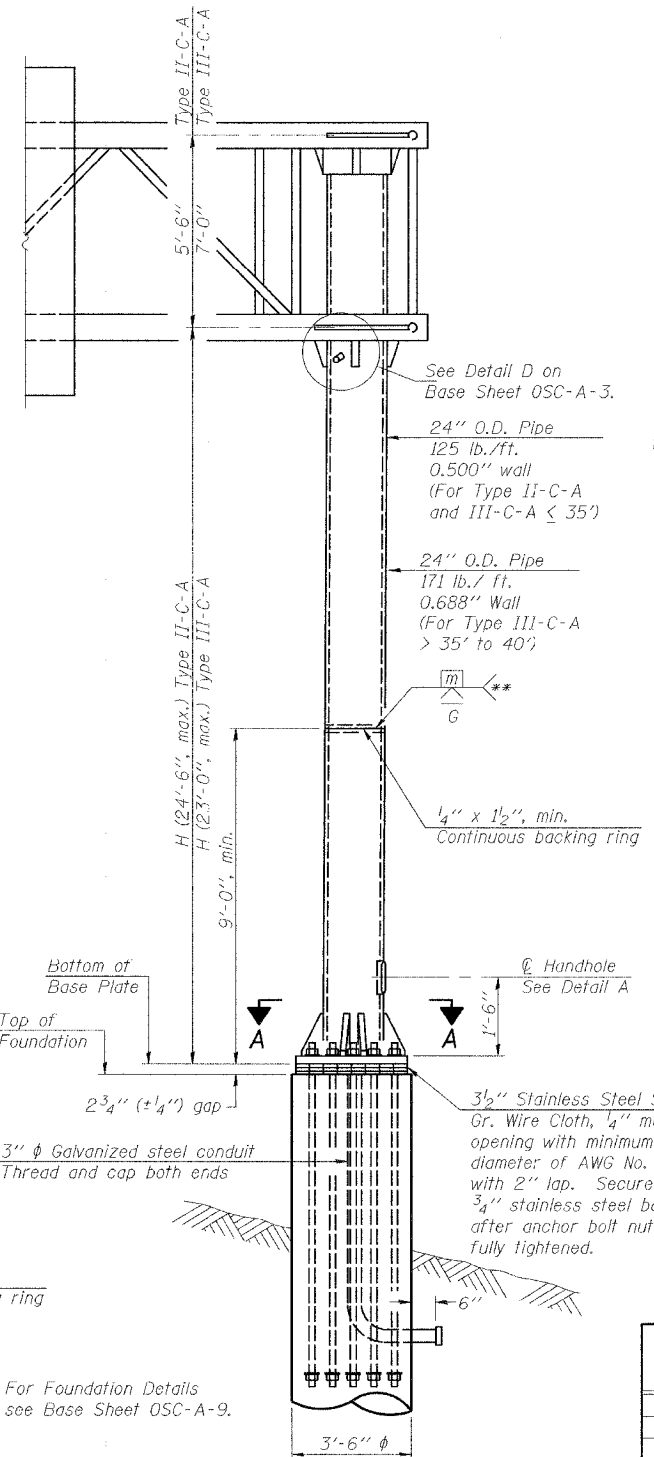
SECTION A-A



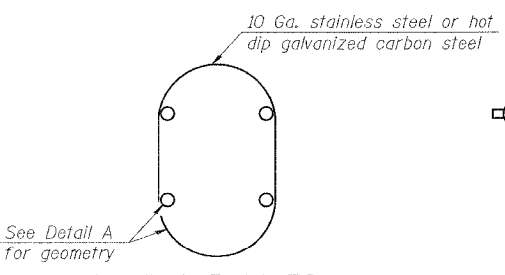
SECTION B-B



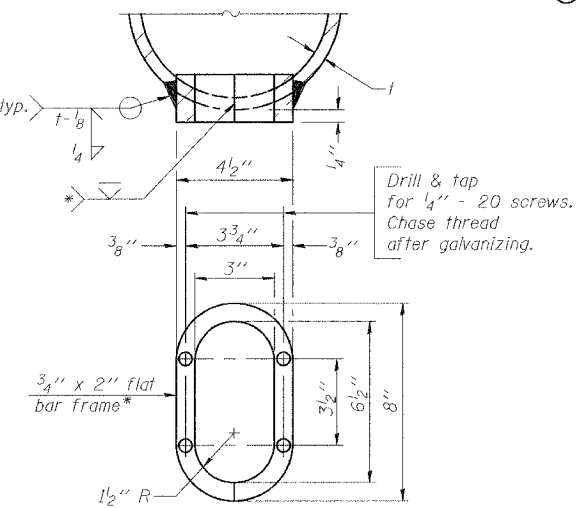
DETAIL B  
(Typical rib)



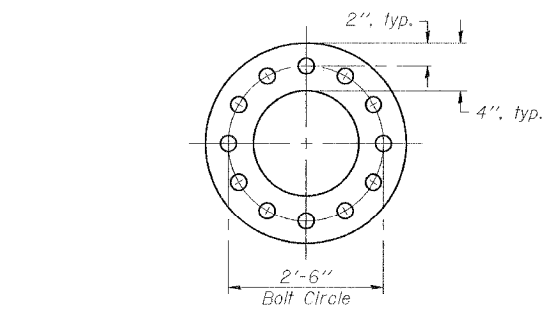
FRONT ELEVATION



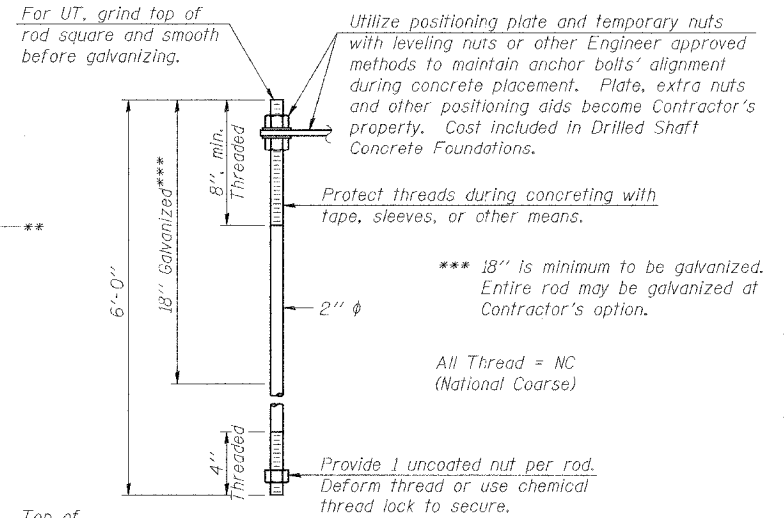
HANDHOLE COVER



DETAIL A



SUGGESTED POSITIONING PLATE



ANCHOR ROD DETAIL

\* Bent bars may be butt welded top and bottom or bottom only. In lieu of fabricated handhole frame as shown, may cut from 2" plate (rolling direction vertical). All cut faces to be ground to ANSI Roughness of 500  $\mu$ m or less.

\*\* Butt welded joint in post is only allowed for post heights (H) over 20 ft. in length. If used, weld procedure must be preapproved by Engineer and joint shall receive 100% RT or UT (tension criteria) at Contractor's expense.

Structure Number	Station	H
9C1001057R054.3	417+15.26	22'-7 1/8"

Note: "H" based on 15'-0" or actual sign height, whichever is greater.

NUMBER	REVISION	DATE

ILLINOIS DEPARTMENT OF TRANSPORTATION  
**CANTILEVER SIGN STRUCTURES**  
**TYPE II-C-A & III-C-A TRUSS SUPPORT POST**  
**ALUMINUM TRUSS & STEEL POST**

MORGAN AVENUE INTERCHANGE  
 FAI ROUTE 57 WITH FAU ROUTE 9718  
 WILLIAMSON COUNTY

SHEET 5 OF 9

PLOT DATE = 8/27/2007  
 FILE NAME = P:\10462007\98994\057R054\OSC-A-5.dgn  
 PLOT SCALE = 1/8" = 1'-0"  
 USER NAME = dharner